



RI7302

Caple 70/30 Integrated Fridge Freezer

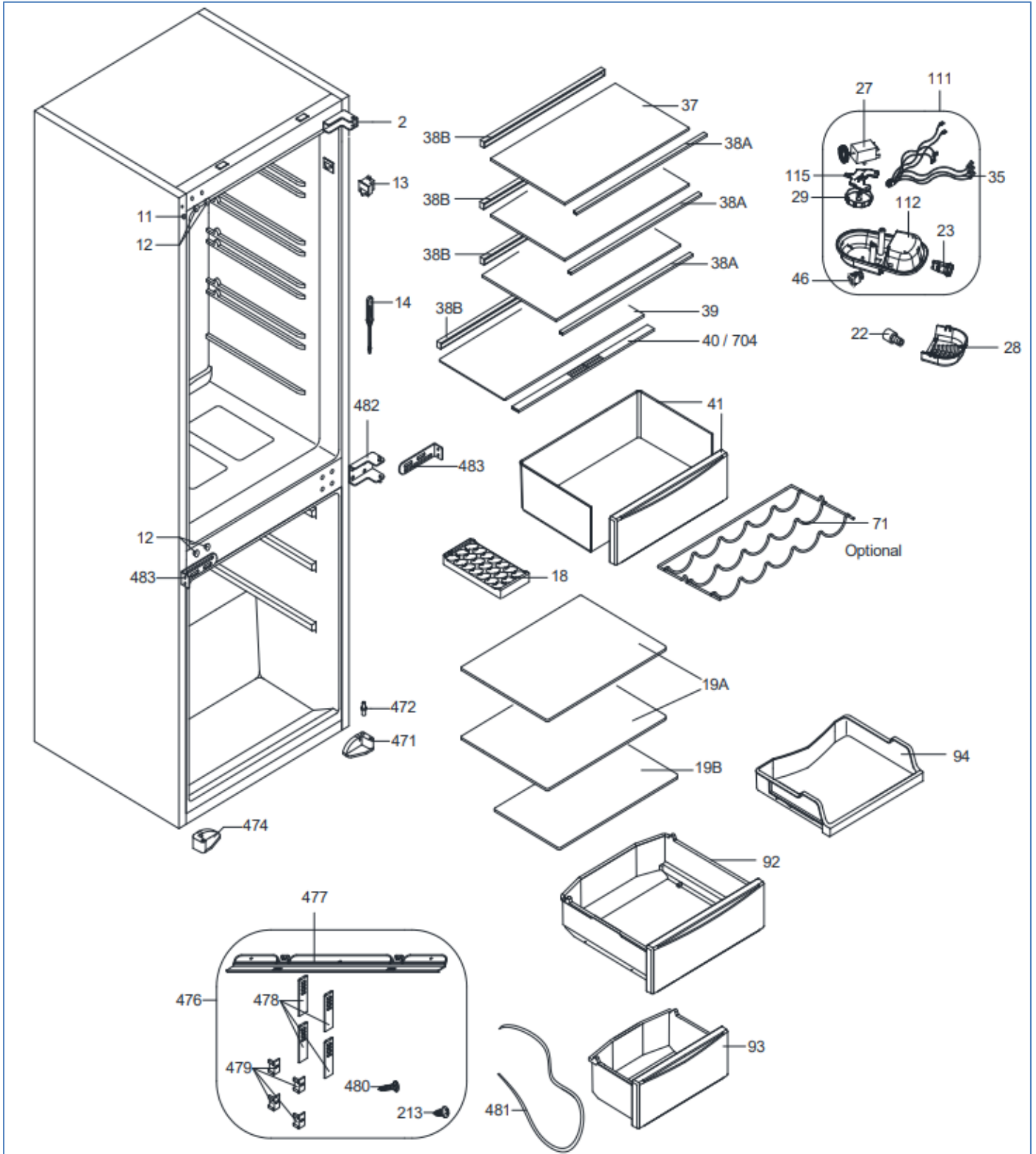


Technical Manual



RI7302

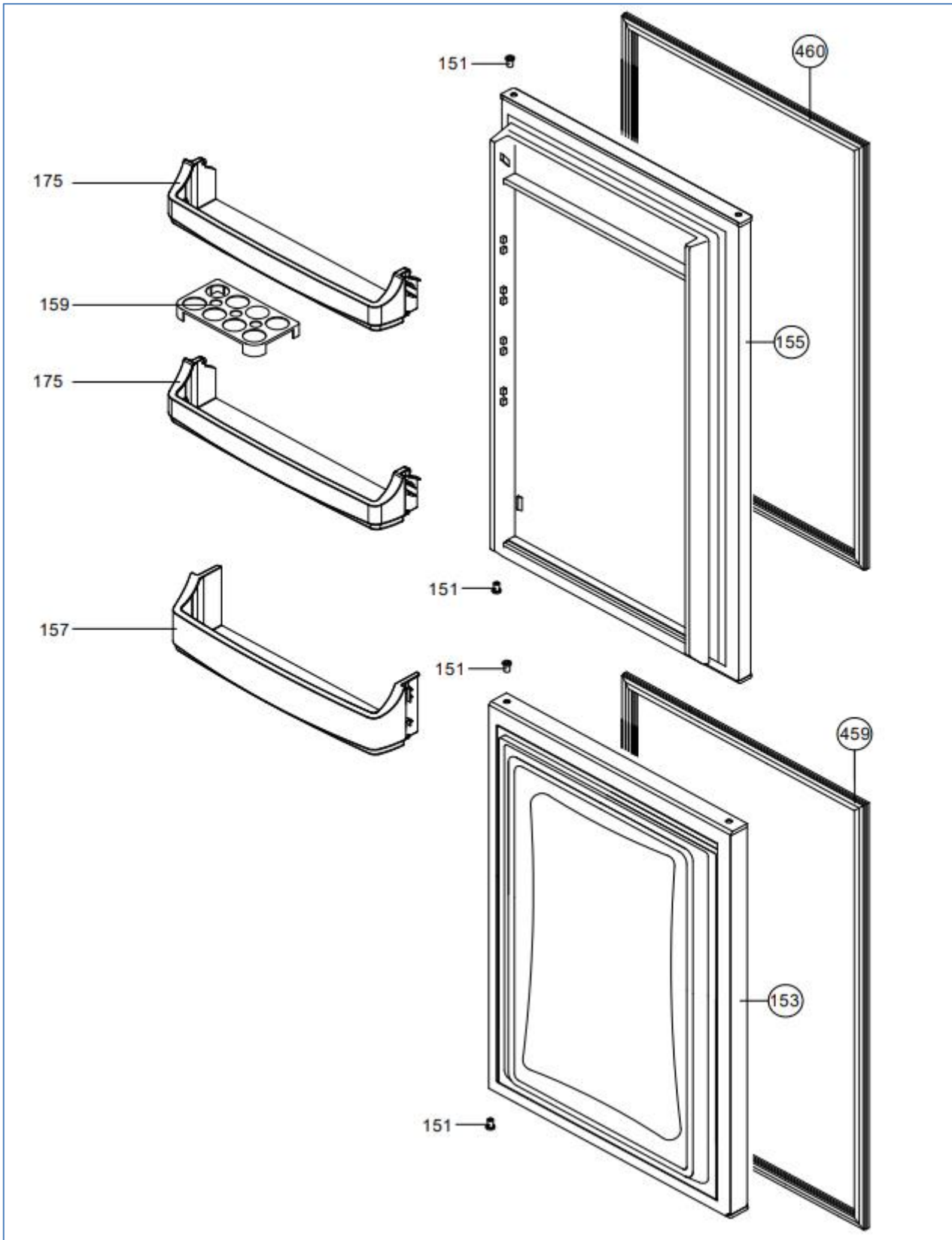
Caple 70/30 Integrated Fridge Freezer





RI7302

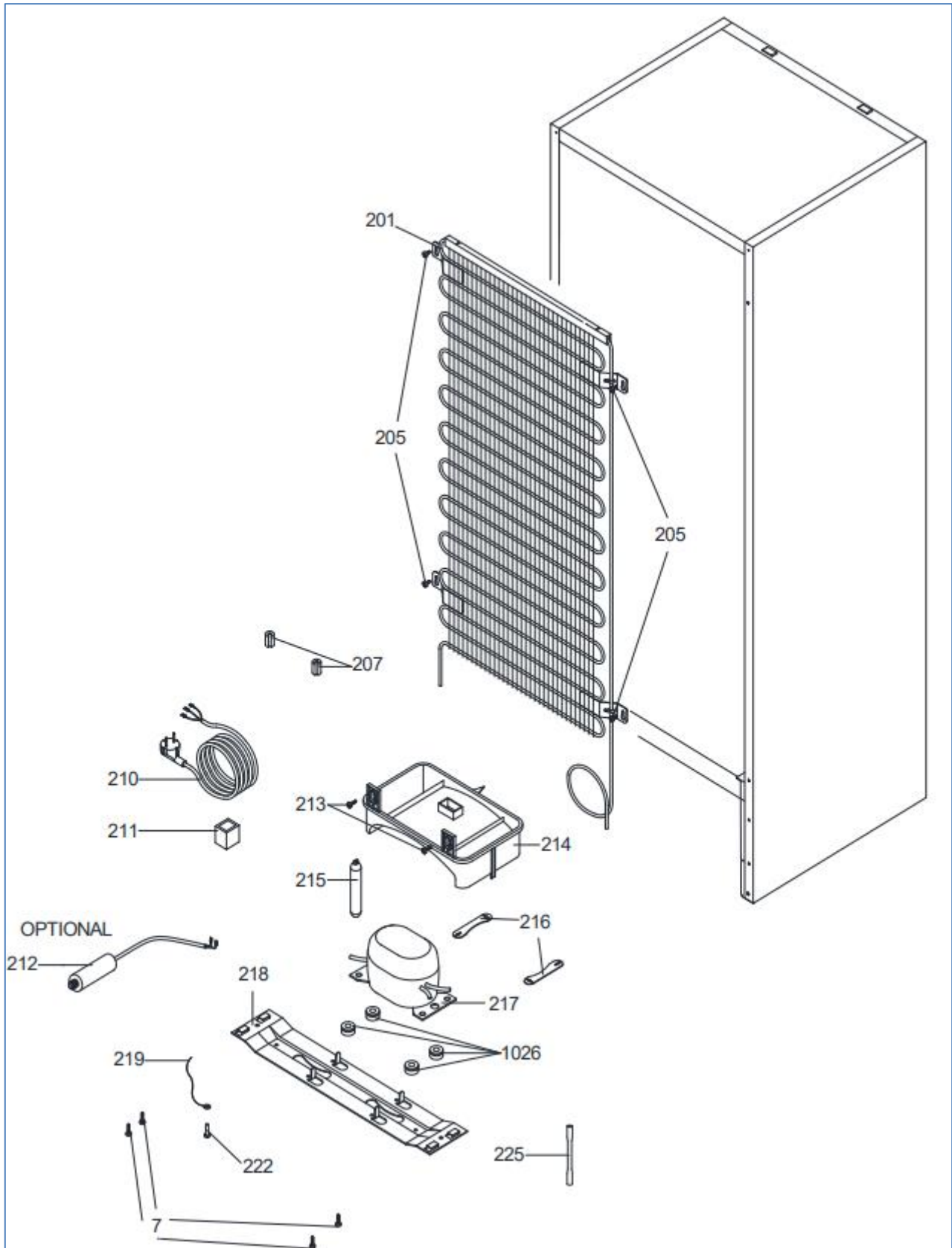
Caple 70/30 Integrated Fridge Freezer





RI7302

Caple 70/30 Integrated Fridge Freezer





RI7302

Caple 70/30 Integrated Fridge Freezer

Item	Part Number	Description
2	37028246	BOTTOM/TOP HINGE SS/1400 BUILT HEX PIN
7	37032597	SCREW TT M5*16 YSB-F
11	42290855	DOOR H. SC. CAP LDPE (SNWWHITE)
12	42032778	MIDDLE HINGE SREW CAP(BIG)S.W.(NEW)
13	32031240	LAMBA SWITCH/2 POLE/BYZ/A
14	42283234	TUNNEL DRAIN PLUG RCYPP
18	42310075	ICE TRAY COMMON SMALL
19A	47021580	F COMPARTMENT GLASS SHELF/375x302x3,2)
19B	47021601	F COMPARTMENT GLASS SHELF/375x183x3,2)
22	32028706	LED BULB/E14/6500K (N)
23	30007907	LAMP HOLDER E-14
27	32046024	THERMOSTAT(HENGTONG WDF29E-K)
28	42201464	LAMP COVER/319
29	42199697	THERMOSTAT KNOB/319(S.W.-432\$)SHORT RV2
37	47014890	R COMPARTMENT GLASS SHELF/2751
38A	42153785	R.GLASS SHELF PRF/3951(EXT)WH 442.5
38B	42147146	R.GLASS SHELF BACK TRIM/319(S.W)
39	47014813	CRISPER GLASS SHELF/2751 (SLIDER)
41	42157049	R.CRISPER GR./319 TRANS-GRAY
46	30015994	ROCKER SWITCH/2 POLE/WHT
70	37035782	SCREW KA 40*14 YSB-C-A3K
92	42157053	FREEZER TOP BASKET GR/318 (TRANS-GRAY)
94	42186249	F.STORAGE RACK/2761(SW)
100	40003861	ANTIVIBRATION (HEAT EXCHANGER)
111	32050671	LAM.TE.K.GR/2764-2754(432\$)KAR/HT4/SW
112	42201577	LAMP.THERM.BOX/319
115	42211521	THERMOSTAT ASSY.BRACKET RV4
151	42004499	BUSHING/1400 ANK
153	20912762	F DOOR ASSY/2761 ANK S-W.CAP(S.W)
155	20912758	R DOOR ASSY/2761 ANK S-W.CAP(S.W)
159	42163485	EGG HOLDER (TRANS.-NAT) RV1
175	42157043	CHEESE BUTTER SHELF/319ERA(TRANS GRAY)
177	42157042	BOTTLE SHELF/319 ERA TRAN-GRAY
201	37029479	CONDENSER 54CM/28 PASS/4,00*0,5MM
205	35009792	SCREW ST 4.8*13 YSB-T-C
207	42155463	RUBBER CONDENSER ANTIVIBRATION
209	32041927	SUP.CAB.GR.TG1112Y/3,5UF/2,5M/UK
210	32007439	POW.CRD/2.5M/UK
211	32039244	OVER L.GR.TG1112Y/DRB17L61/QPS2C15MD3
211B	42252535	COMP.COVER/JIAXIPERA24.04.069 RV1

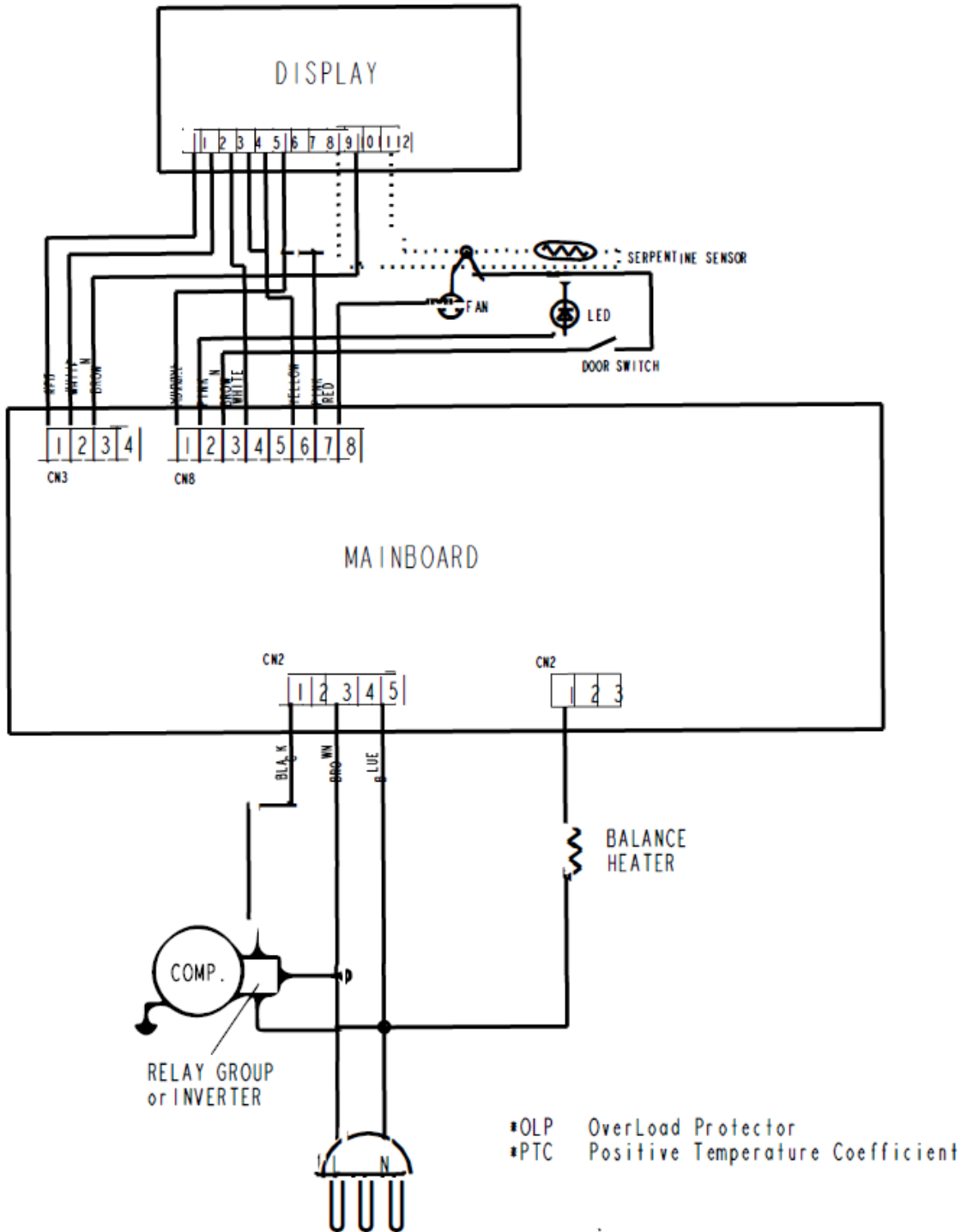


RI7302

Caple 70/30 Integrated Fridge Freezer

Item	Part Number	Description
213	35000743	SCREW 4.2*9.5 YSB-C
214	42189705	EVAPORATING TRAY/2500 ANK (NAT)-FR
215	37029499	DRYER(XH9,0.40MM,5.5GR)SINGLE
216	37047599	COMP. FIXING BRACKET (0,8)
217	32039243	COMPR.TG1112Y/3.5UF/QPS2C15/DRB17L61/JIA
218	37053889	COMP BASEMENT/2791 PROGRESIF
219	32036742	EARTH WIRE(PGYB)WASHER/0,50
222	20865033	VIDA TOPRAK.KABLO/TRT(37023688)FANTOM
222	37023688	SCREW TT M4*6 YSB-T-F
224	35000728	SCREW KA 50*14 YSB-F
225	37049663	SERVICE TUBE(95*6*0,7)TIP B
455	37015223	SCREW KA 40*16 YHB-C-INOX
459	42159333	F DOOR GASKET/2761 I (SW)
460	42159332	R DOOR GASKET/2761 I (SW)
471	42305747	FOOT SS/ANK(RIGHT)RV2 POM
472	37028128	BOTTOM HINGE PIN SS/BUILT-IN RV1
474	42305746	FOOT SS/ANK(LEFT)RV2 POM
476	42209616	SS ASM KIT/DD 54 CM RV3 (WITHOUTBRACKET)
477	22021982	TOP COVER SHEET BI/54CM SNWHITE
478	42147208	SS DOOR REAL/1400 SW RV1
478B	42180204	SS DOOR RAIL COVER/1400 ANK(S.W.)
479	42033307	SS DOOR GUIDE/1400 ANK(S.W.)
480	37001045	SCREW KA YHB 4*17 C ST CHIPBOARD
480	37030634	SCREW,P,YSB,40x13,C,ST,A3K,SUNTA
481	42217911	FURN. SPACE COVER GASKET/3200BI-SS (SW)
482	37001157	MIDDLE SS HINGE/2600 ANK.
483	37032978	SS MID HNGE SIDE BRACK/BUILTIN/2300-2460
510	37036052	SCREW M,YHB,5x14,F,ST,A3K,TT, LAMELLA
569	42157051	BOTTOM BASK.GR/319(TRANS-GRAY)
829	37012412	SCREW M YSB 4*17 C ST TT
1026	42176268	COMPRESSOR RUBBER
40-704	42298428	CRISPER FLAP GR/2795(432C \$)HUMC
	37038214	SCREW TT M5*16 TSB-F LAMELLA

RI7302
Wiring Diagram





RI7302

Caple 70/30 Integrated Fridge Freezer



Service Manual

Thermostat Setting

It ensures that the temperature settings in the cooling and freezing compartments of your refrigerator are performed automatically. It may be set to any value ranging from 1 to 5. As you turn the thermostat setting knob from 1 to 5, the temperature decreases. To save energy in winter months, operate your refrigerator in a lower position.

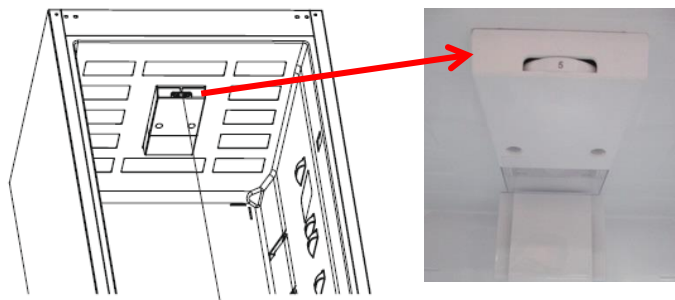
Fridge compartment thermostat knob;

3 – 4 : For long-term storage of food

5 : Maximum cooling position. The appliance will work longer. If required, change the temperature setting.

If device has SF position:

- Turn the knob to SF to freeze fresh food quickly. In this position, the freezer compartment will operate at lower temperatures.



Thermostat knob

After your food freezes, turn the thermostat knob to its normal use position. If you do not change the SF position, your appliance work will automatically return to its last used thermostat position according to the time indicated in the note. Return the thermostat switch to the SF position and return it to normal use according to the time indicated in the note. If the thermostat switch is in the SF position when your appliance is first started, your appliance work will automatically return to the operation in the thermostat-3 position according to the time indicated in the note.

Super freezing: This switch shall be used as superfreeze switch. For maximum freezing capacity, please turn on this switch before placing fresh food. After placing fresh food in the freezer, 24 hours ON position is generally sufficient. In order to save energy, please turn off this switch after 24 hours from placing fresh food.

Winter Switch: If ambient temperature is below 16 C, this switch shall be used as winter switch and it keeps your fridge above 0 C while freezer is below -18 C in low ambients.

Changing The Door Swing Direction to Right Hand

1- Unscrew the two screws fixing the top hinge (Pic-1) and remove the refrigerator door. (Pic-2)



Picture-1



Picture-2

2- Unscrew the two screws fixing the middle hinge side bracket and remove it. (Pic-3)



Picture-3

3- Unscrew the two screws fixing the middle hinge (Pic-4) and remove the freezer door. (Pic-5)



Picture-4



Picture-5

4- Remove the bottom hinge pin (Pic-5) and insert it to the left side foot. (Pic-6)



Picture-5



Picture-6

5- Unscrew the middle hinge side bracketed on the left and remove it. (Pic-7)
Remove the middle hinge screw caps (big) on the left side.



Picture-7

6- Assemble the refrigerator door. Rotate the middle hinge by 180° and screw it to the left side. (Pic-8) Then screw the middle hinge side bracketed on the middle hinge. (Pic-9)



Picture-8



Picture-9

7- Remove the top hinge screw caps (big) on the left side (Pic-10) and insert them to the right side. (Pic-11) (You can find the new caps in the user manual bag)

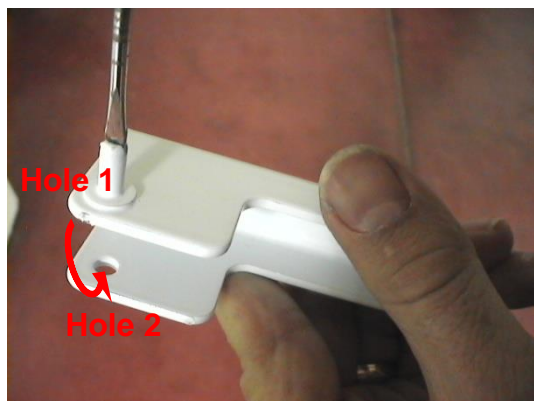


Picture-10



Picture-11

8- Unscrew the pin of the hinge from Hole 1, rotate the top hinge by 180° and screw the pin to Hole 2. (Pic-12)



Picture-12

9- Assemble the freezer door and screw the top hinge to the left side. (Pic-13)



Picture-13

10- Screw the middle hinge side bracketed on the right of refrigerator. (Pic-14) and insert the middle hinge screw caps (big) on the right side. (Pic-15) (You can find the new caps in the user manual bag)



Picture-14



Picture-15

Replacement of Door Switch

1. Insert a screwdriver into the gap and pull the door switch.

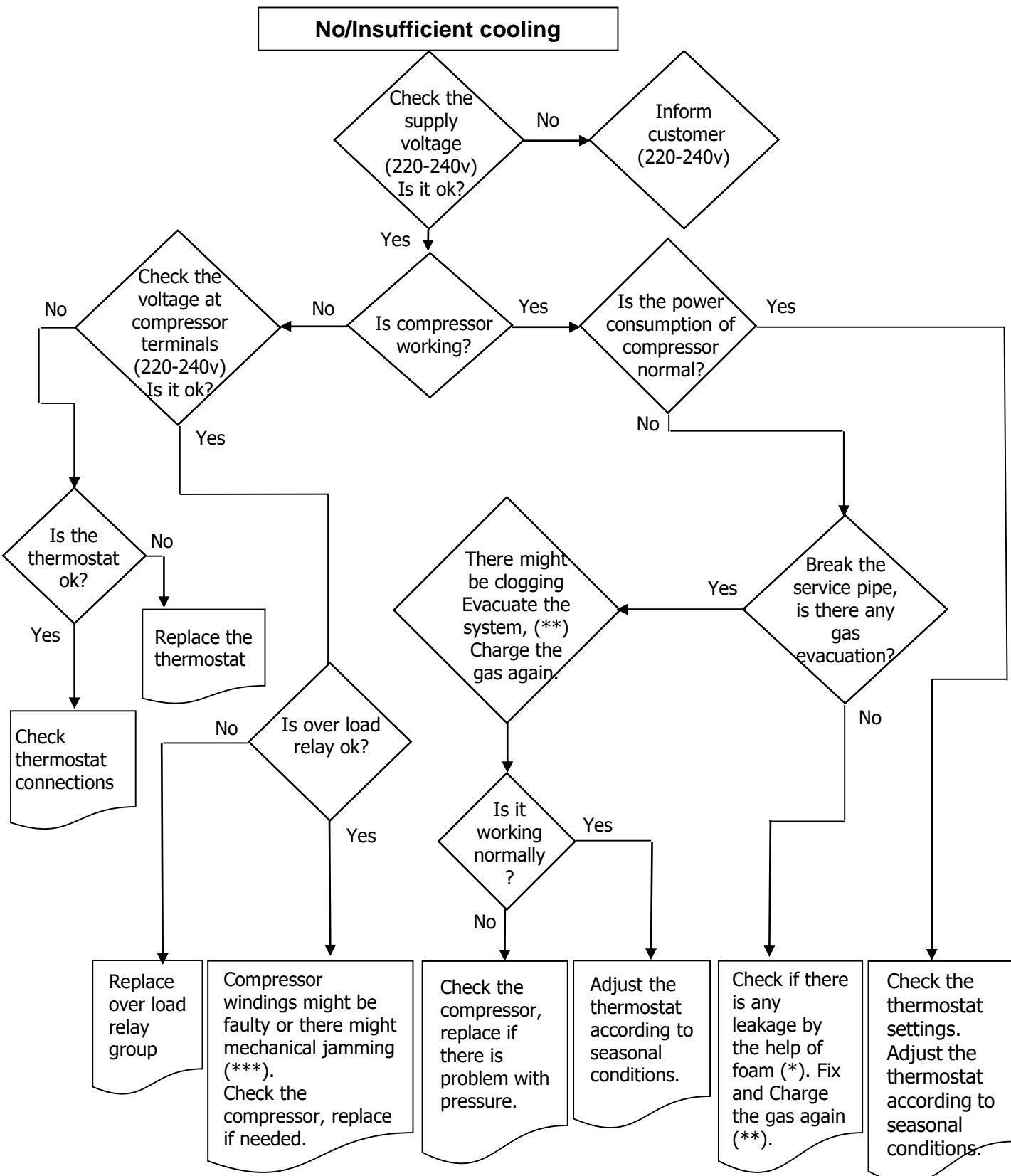


Picture-1

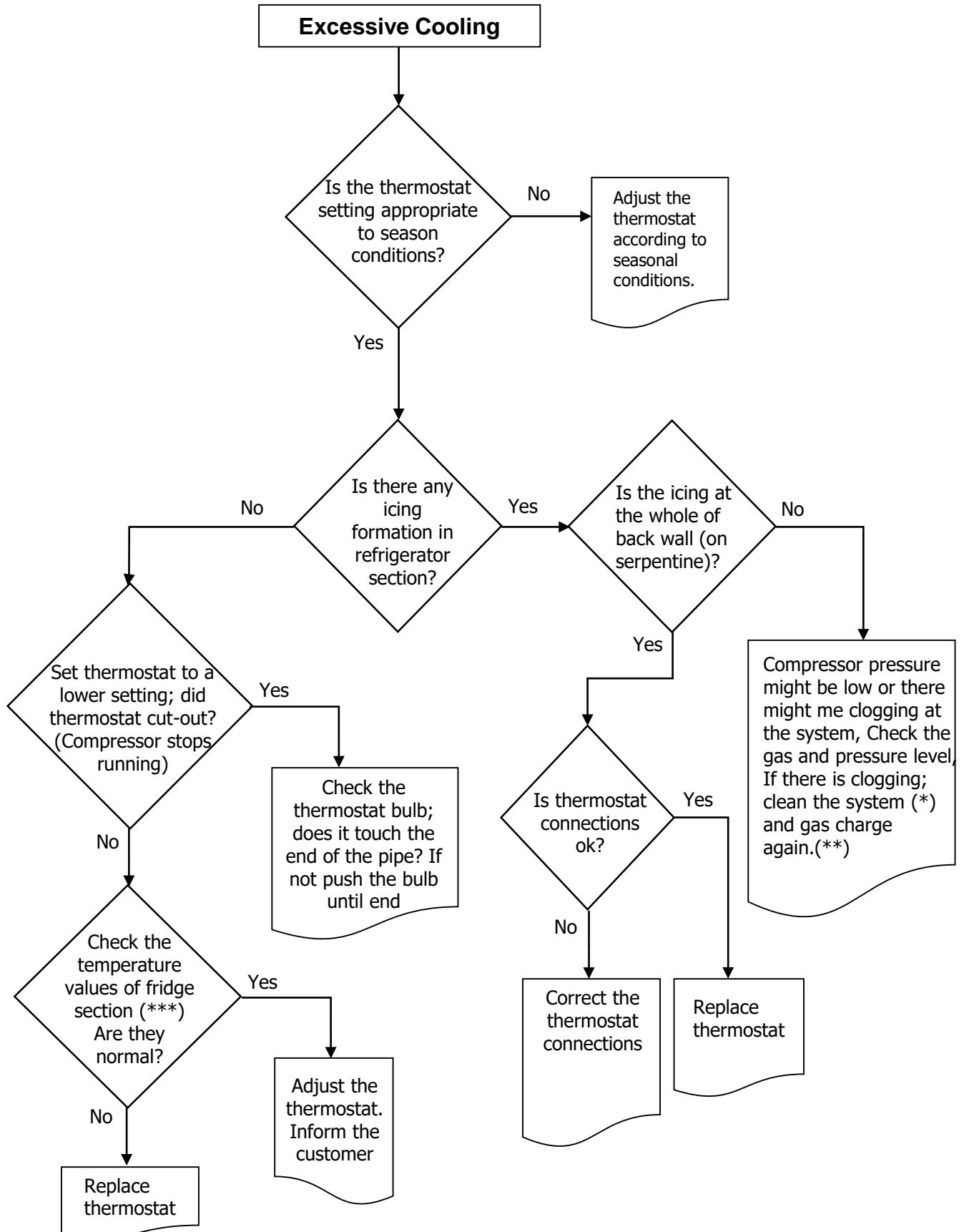
2. Disconnect the connectors. And remove the door switch.

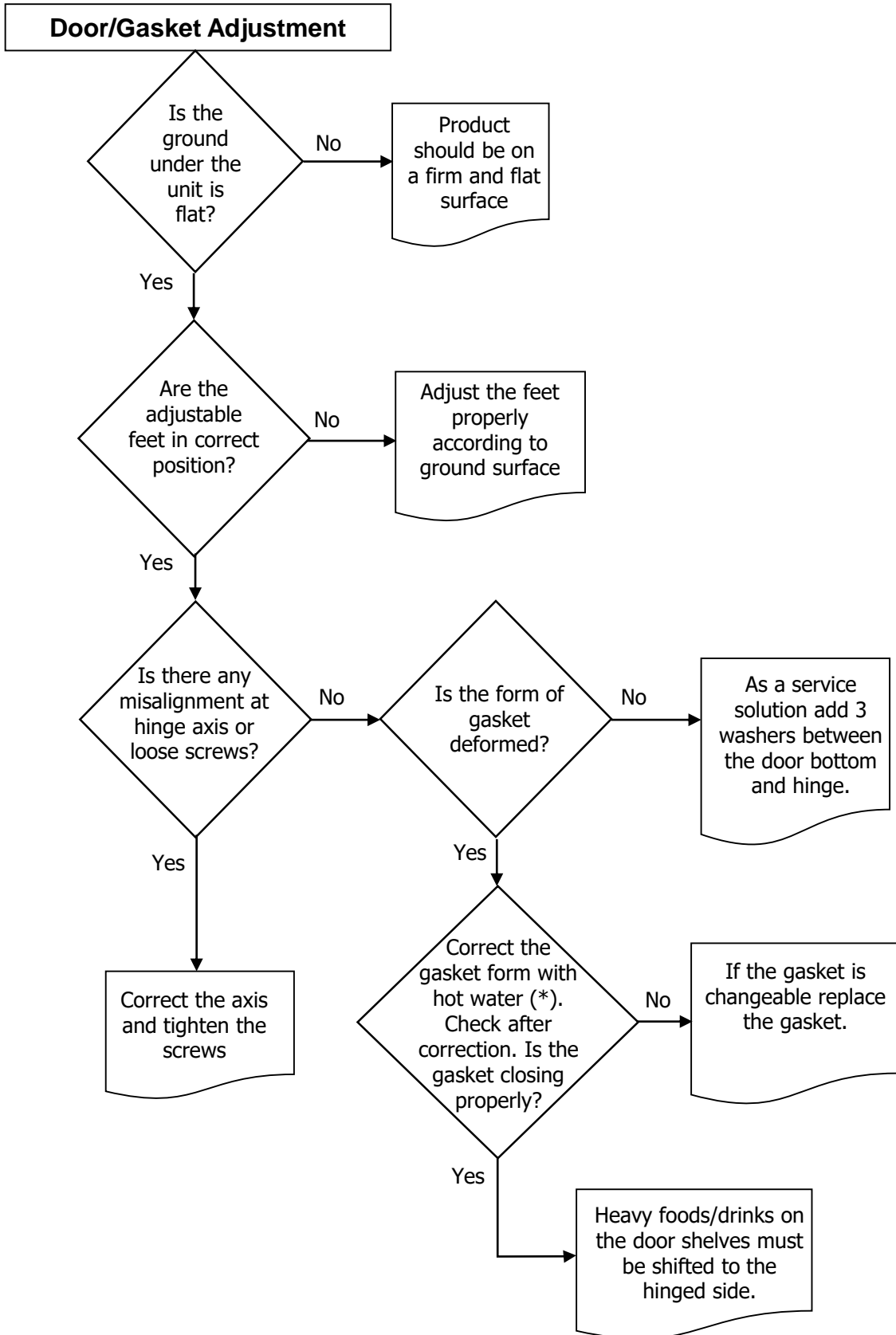


Picture-2

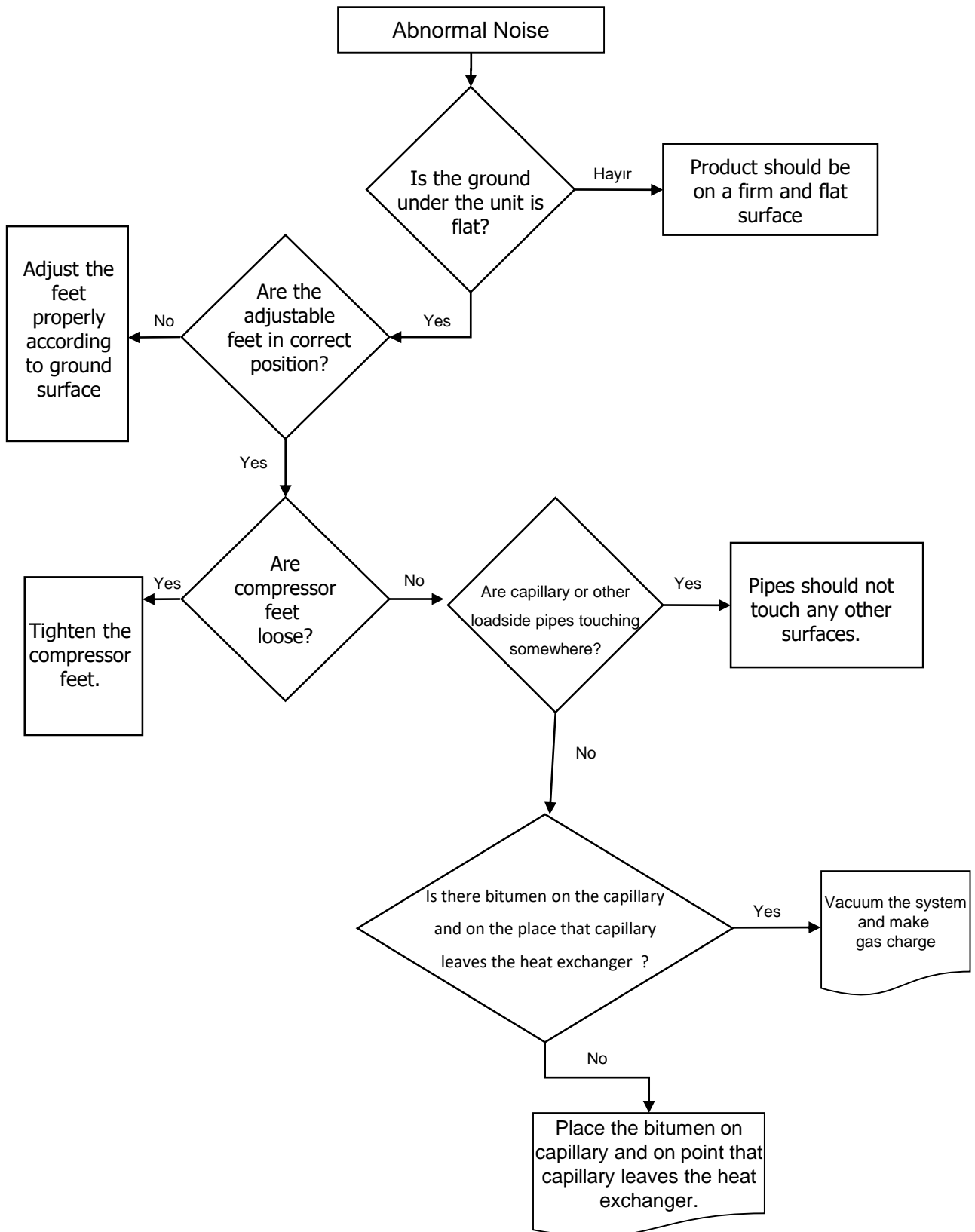


(*) Check all pipes, tubes and welding points against gas leakage. (**) Before charging gas to system, change dryer and vacuum at least 30 minutes, then charge the system with amount written on label (***) Compressor primary winding should be around 10 Ω and secondary around 15 Ω (at 25°C ambience temp.)



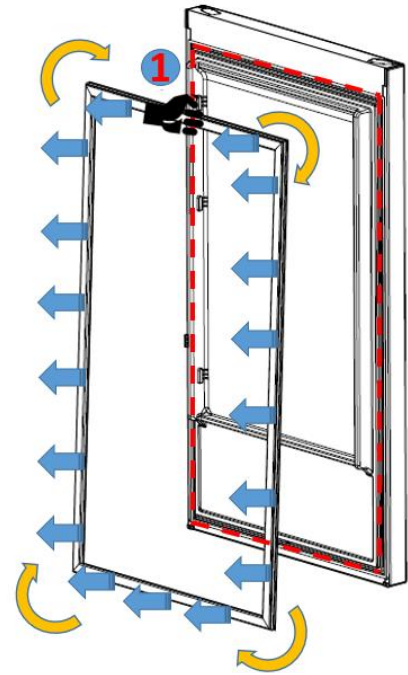


(*) Correct the gasket form by the help of hot water and hair dryer.

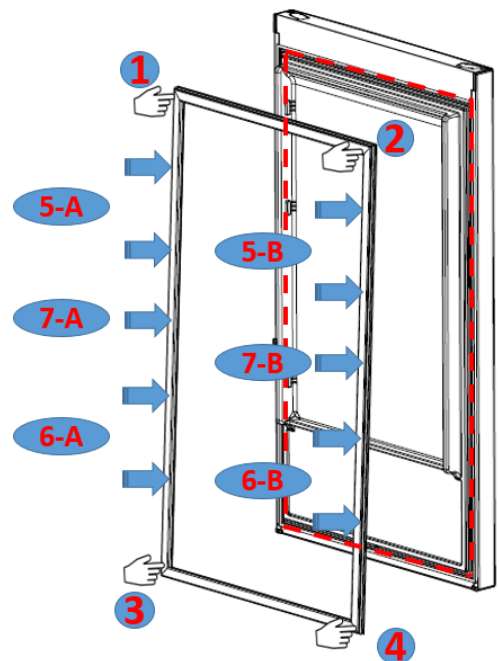


Replacement of Door Gasket

Pull the gasket towards starting from top right corner
Slowly pull the rest of the gasket.
Completely remove the gasket from door.



Check the replacement gasket form
Starting with upper right corner, press on the gasket until it fits to its place..
Place the other sides of the gasket with the help of your thumb



After the replacement check if there any non-fitting point on the gasket. Also check if there any opening at the gasket while the door is closed. If so that might cause condensation/icing or insufficient cooling/freezing. To prevent this soften the form of the gasket with the help of a hair dryer or hot water and make sure that all points are closing perfectly.