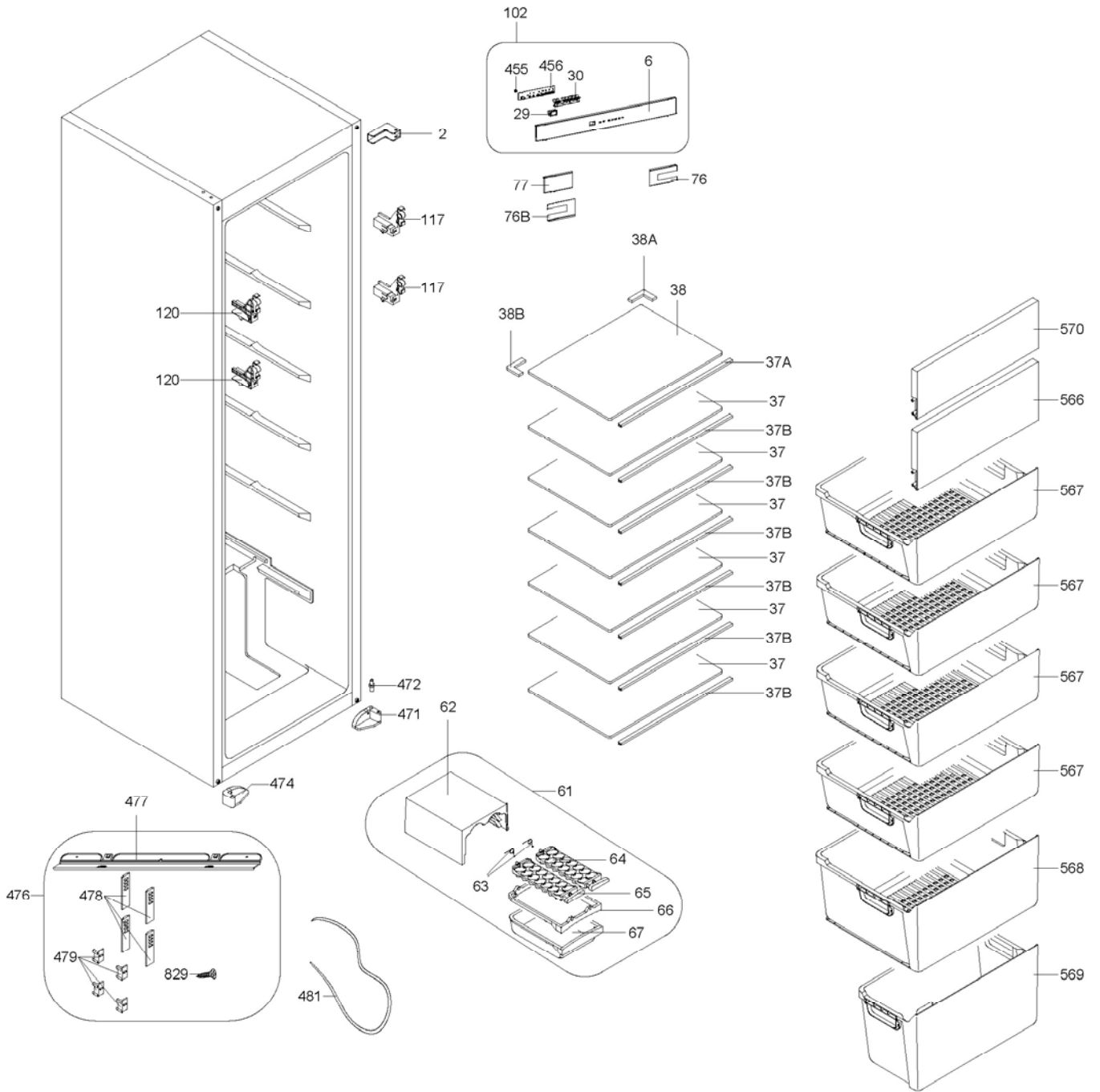


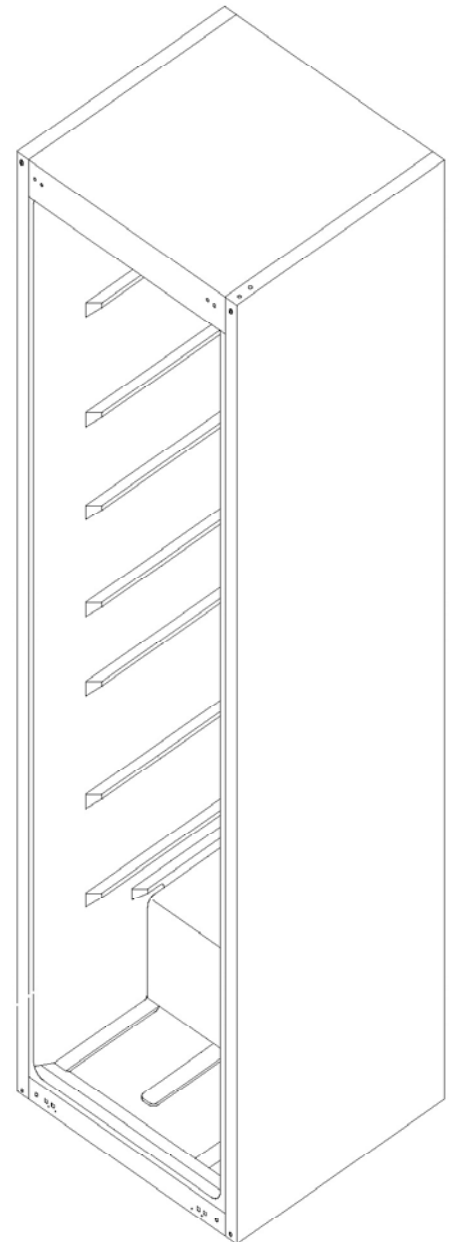
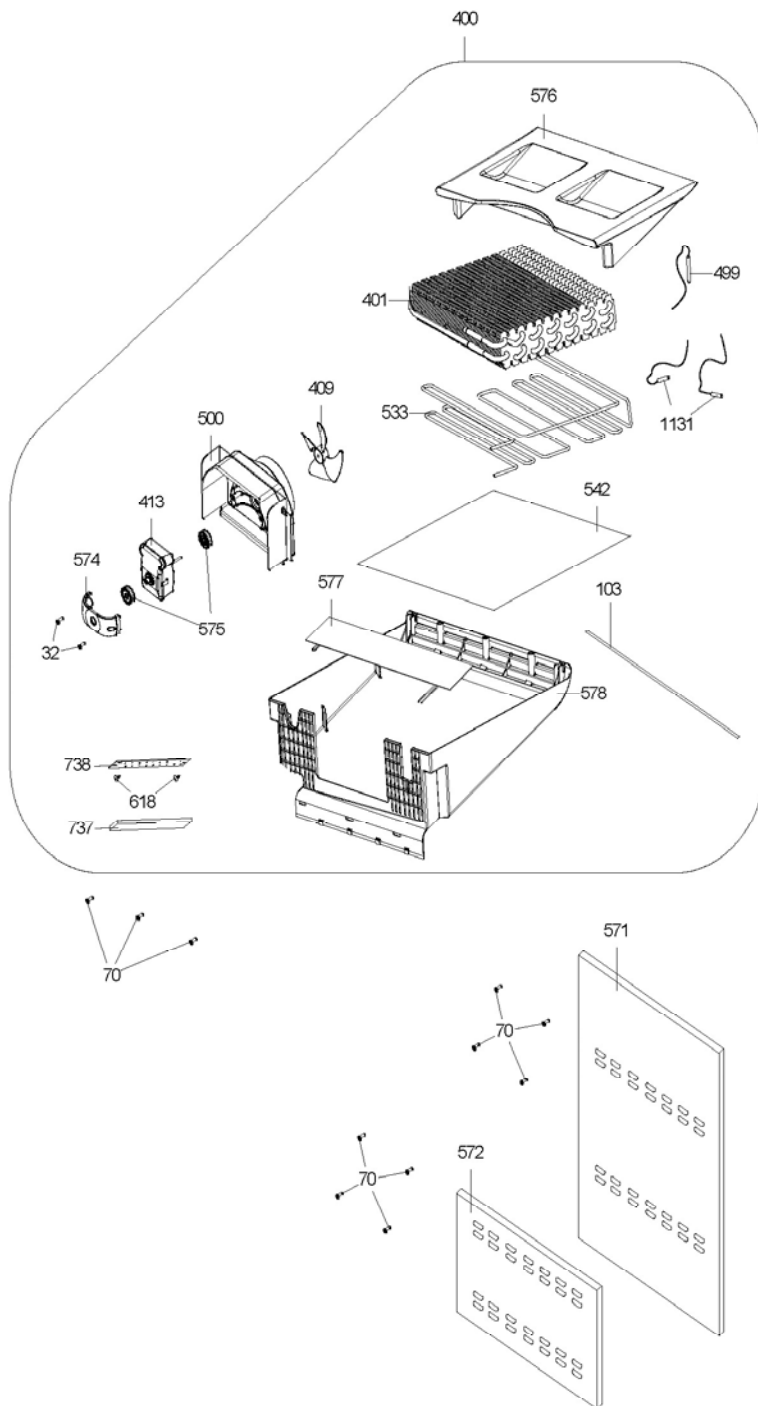


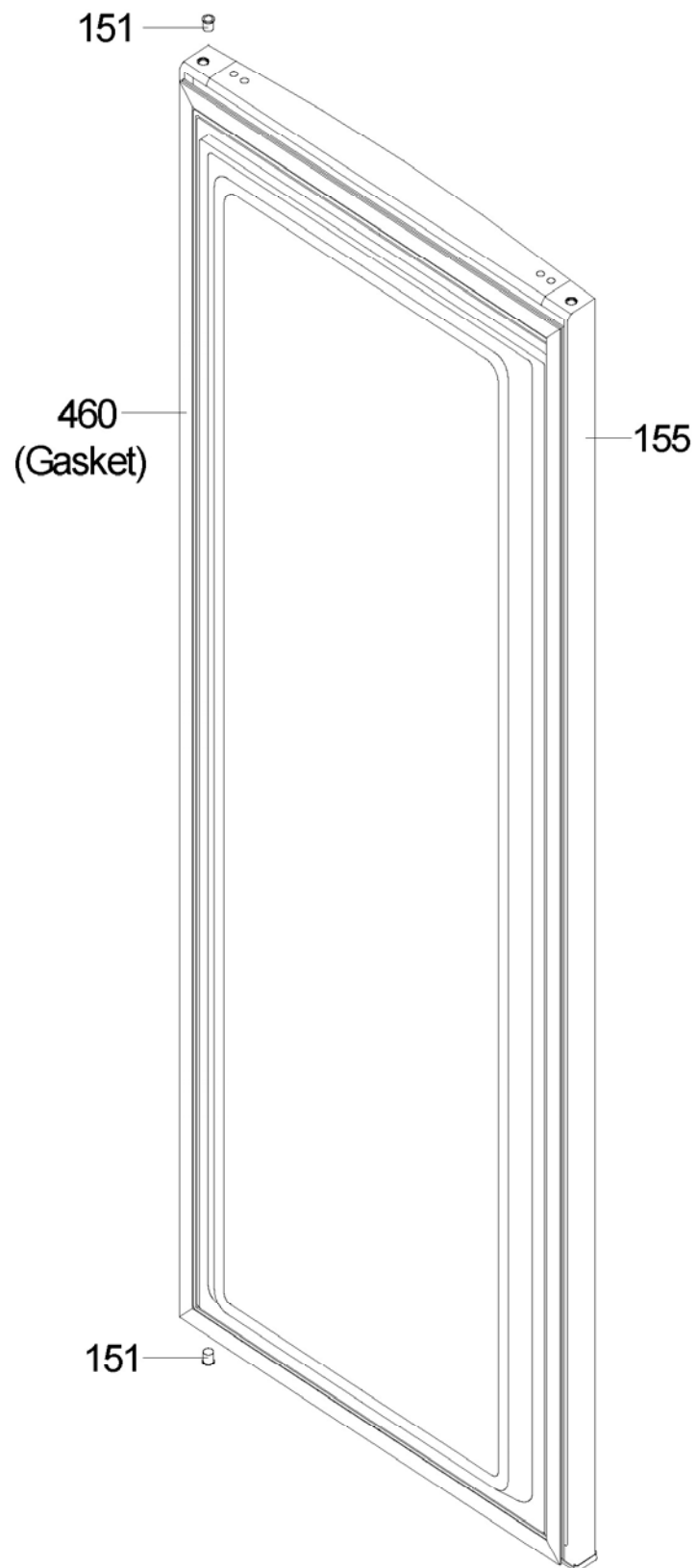
**RIF1795**

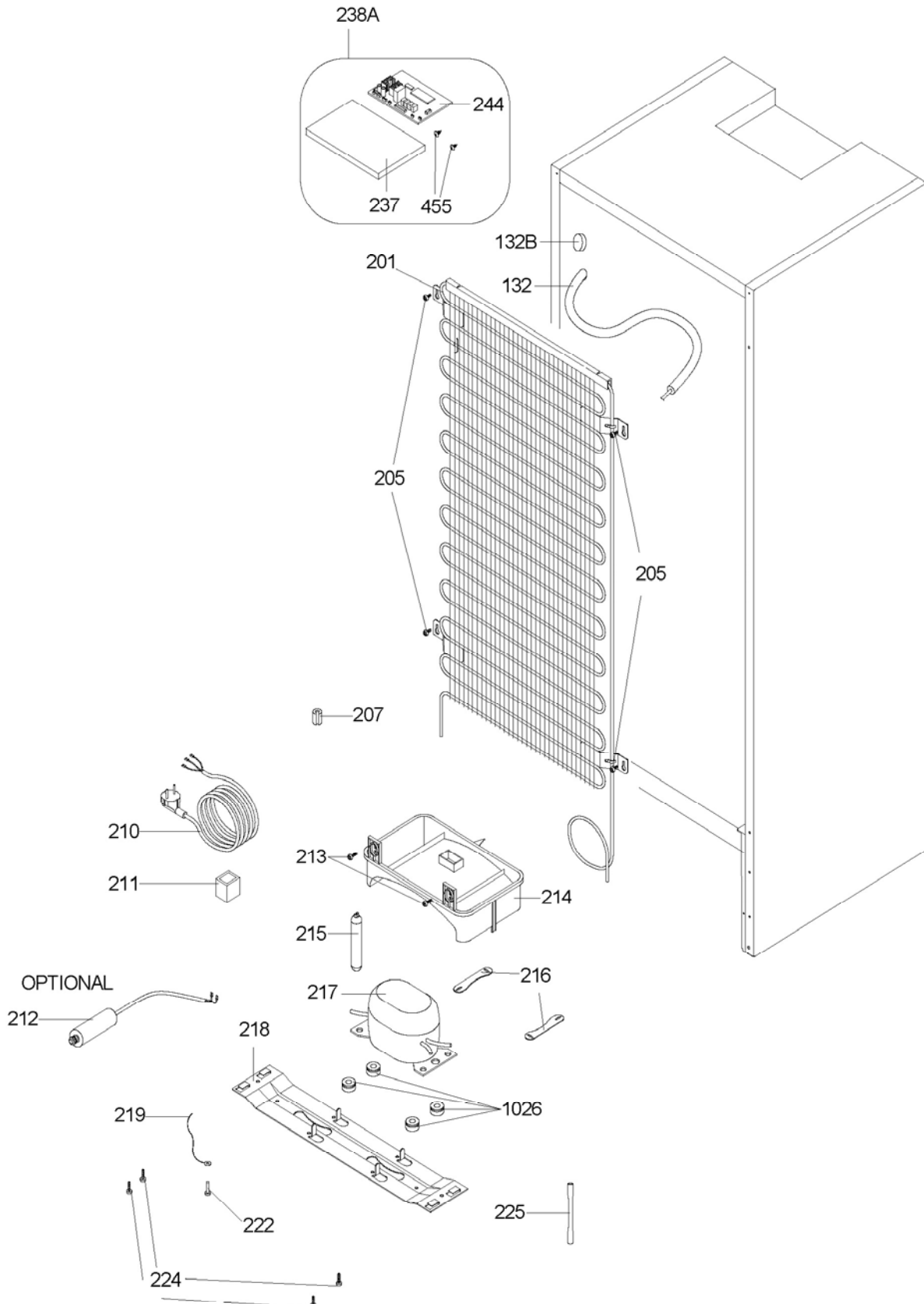
**Caple 177cm Integrated Freezer**

**Technical information**











## RIF1795 - Caple 177cm Integrated Freezer

Item	Part Code	Description
2	37028246	BOTTOM/TOP HINGE SS/1400 BUILT HEX PIN
6	42157901	HEAD PANEL /2791 (SW)P432C SRGF
25	35003482	SCREW 40*13 YSB-R-C-INOX
29	42157903	HEAD PANEL BUTON /2791 (SW) SRGP
30	42140581	LIGHT CARRIER 2451
32	35000744	SCREW KA 40*18 YSB-C-INOX
37	47013797	CRISPER COVER/2791
37A	42160778	FREEZER TOP GLASS SHELF TRIM/2791(S.W.)
37B	42160777	FREEZER GLASS SHELF TRIM/2791(S.W.)
38	42159581	GLASS SHELF ICEMATIC/2791
38A.1	42133761	GLASS SHELF BACK CORNER TRIM RIGHT
38A.2	42133761	GLASS SHELF BACK CORNER TRIM RIGHT
38B.1	42133765	GLASS SHELF BACK CORNER TRIM LEFT
38B.2	42133765	GLASS SHELF BACK CORNER TRIM LEFT
61	42135694	ICEMATIC/473 (WH.GRI) 432C SRGF
62	42129530	BUZMATIK COVER/473
63	35000731	ICE TRAY SPRING
64	42057538	ICE TRAY/CUBE(S.W.)
65	42057541	ICE TRAY KNOB/CUBE(S.W.) SNOW
66	42135738	ICEMATIC FRAME/473(S.W.)432C SRGF
67	42138251	ICE BOX/473 (WH.GRI) 432C SRGF (NEW)
70	35001678	SCREW KA 40*14 YSB-R-F-INOX
76	42152836	HEAD PANEL COVER 2791 RIGHT S.W
76B	42152837	HEAD PANEL COVER 2791 LEFT S.W
77	42152838	HEAD PANEL COVER 2791 S.W
102	32029640	HEAD PANEL GR/2791 S.W
103	42032273	HEAD PANEL SEAL/360(S.W.)
117	42031901	F COVER SUPPORT R/390(S.W.)
120	42031903	F COVER SUPPORT L/390(S.W.)(S.W.)
131	35001721	SCREW KA 40*14 YSB-C-INOX
132	42040560	COVER TUBE
132B	42118012	BACK COVER
151	42004499	BUSHING/1400 ANK
151	42128089	BUSHING/345P(NAT) RV1
155	20870852	DOOR ASSY/2791 ANK S-CAP(S.W)
201	37027368	CONDENSER 54CM/24 PASS/4,00*0,5MM(2CS)
203	42118033	SPACER(NAT)
205	35009792	SCREW ST 4.8*13 YSB-T-C
207	42155463	RUBBER CONDANSER MUTUAL ANTIVIBRASYON
209	32029218	CAP.SUP.C.GRTB1114Y-2,5M(4UF)TIRNAK ING
210	32007439	POWER CORD(2.5m-ENG)
211	32025001	OVER L.GR.TB1114Y/B50-120/TYQQZ108-2
212	32007063	CAPACITOR 4UF/400V P2
213	35000743	SCREW 4.2*9.5 YSB-C



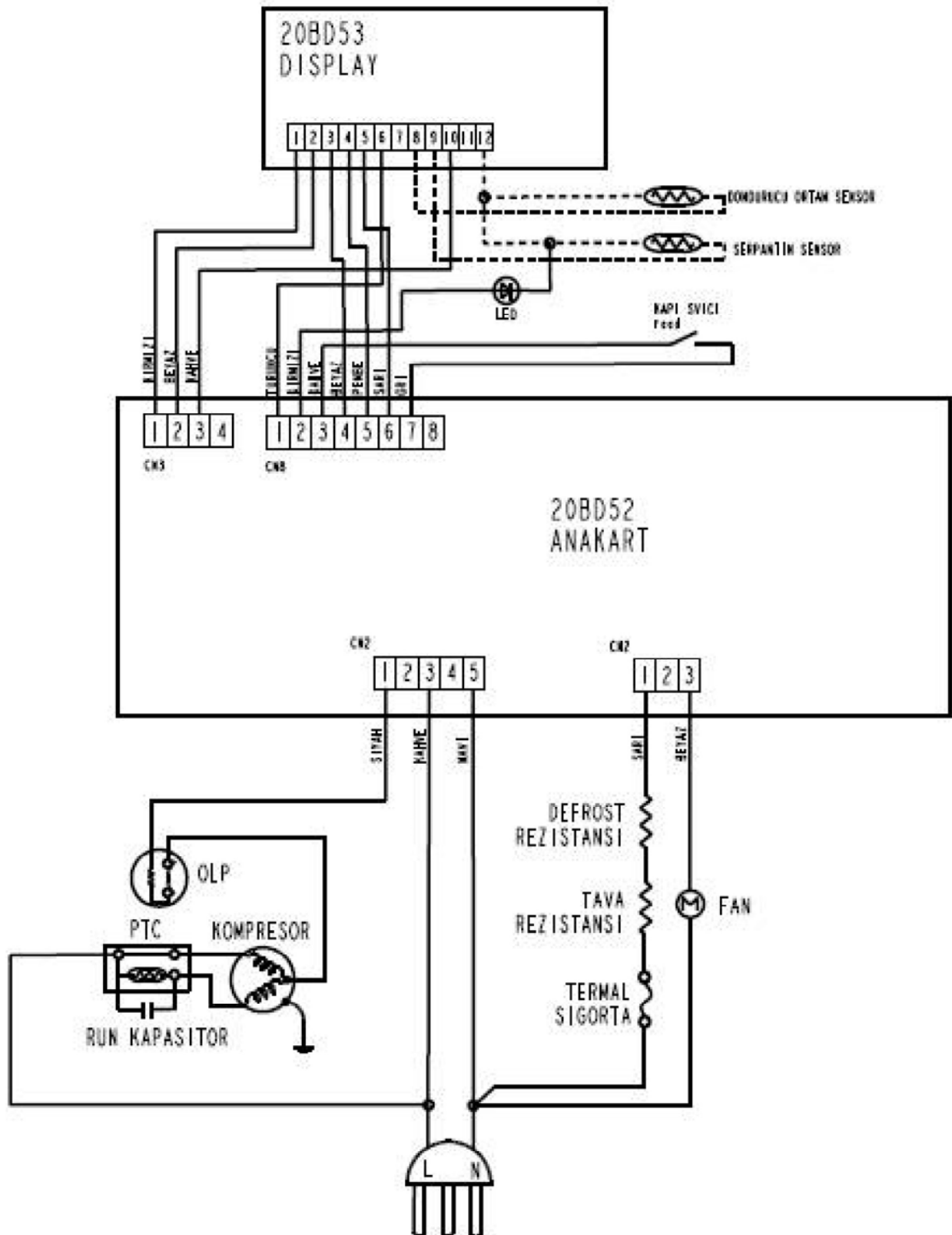
## RIF1795 - Caple 177cm Integrated Freezer

Item	Part Code	Description
214	42118207	EVAPORATING TRAY GR/2500A++ S.W
214	42119400	EVAPORATING TRAY / 2500 BI
215	37021264	DRYER(XH9,0.40MM,7.5GR)SINGLE
216	20020023	COMP FIXING BRACKET
217	32024990	COMP.TB1114Y/4MF/B50-120/TYQZ108-2/JIAX
218	37024783	COMP.BASEMENT/3200 BI
219	32027294	EARTH WIRE/WASHER
222	37023688	SCREW TT M4*6 YSB-T-F
224	35000728	SCREW KA 50*14 YSB-F
225	35002664	SERVICE TUBE(105*6*0,7)TYPE B
237	42152839	MAINBOARD COVER 2791E/V0
238A	32029651	MAINBOARD COVER GR 2791E/V0/BD52
244	32029655	MAIN B./BDA52/243-2791/NOSW-23293624
400	32030736	FIN EVAP GR./2791(S.W)W.LED/CASE HEATER
401	37027370	FIN EVAP ASSY/2791
409	42027265	PROPELLER/391(FRZ.FAN MOTOR)
413	32016100	EVAP FAN MOTOR/2200RPM
455	37000156	SCREW KA 30*6 YSB-F
455	37000156	SCREW KA 30*6 YSB-F
456	32029657	DB/BDD53/2791/R1.0.10/V35-23312257
460	42155754	DOOR GASKET 2795 B.I. I (SW)
471	42157404	FOOT SS/ANK(RIGHT)S.W.RV1
472	37028128	BOTTOM HINGE PIN SS/BUILT-IN RV1
474	42157403	FOOT SS/ANK(LEFT)S.W.RV1
476	42162275	SS ASM KIT/DD 54 CM RV1 (WITHOUTBRACKET)
477	22021982	TOP BRACKET/ANK(3 HOLE)(S.W)
477	22021982	TOP BRACKET/ANK(3 HOLE)(S.W) TAPED
478	42033308	SS DOOR REAL/1400 ANK(S.W.)
479	42033307	SS DOOR GUIDE/1400 ANK(S.W.)
480	37001045	SCREW KA 40*17 OZEL1-C
481	42032772	SEALING/3200 ANK-SS(S.W.)
499	32030054	TERMAL FUSE SINGLE/500
500	42152552	FAN BOX/243
510	37003078	SCREW M5*14 YHB-F
533	32030053	FIN EVAP HEATER/2791/230V/180W
542	32030752	CASE HEATER GRB 2791/230V/35W
566	42157057	F FLAP COVER GR/319 (TRANS-GRAY) FLYP
567	42159151	F.TOP BASK.GR/2791(TRANS-GRAY)FLM
568	42159153	FREEZER BIG BASK.GR/2791(TRANS-GRAY)FLM
569	42158044	FRZ BOTTOM BASK.GR/319(TRANS-GRAY)FLM
571	42152850	MULTIFLOW COVER TOP 2791(S.W.)
572	42152849	MULTIFLOW COVER BOTTOM 2791(S.W.)
574	42027261	FAN BOX MOTOR FIXER/391
575	42118751	FAN MOTOR SEAL/391(RV1)
576	52189466	FIN EVAP PAD/2791
577	32030749	CESE HEATER/2791/230V/35W
578	42152848	FIN EVAP BOX/2791(S.W.)
588	37022711	SCREW ST 4.2*14 SPECIAL 17-C



## RIF1795 - Caple 177cm Integrated Freezer

Item	Part Code	Description
618	37010180	SCREW 30*8 YSB-F-INOX
737	42156712	LED COVER/243
738	32028881	LED STRIP/2835*6/8*129MM/12V/373
829	37012412	SCREW TT M4*17 OZEL2-C
1026	42018611	COMPRESSOR RUBBER
1131	32003768	SENSOR/VF/R16K3/1660MM/DOUBLE
P101	50007464	PACKAGE STRIP(0,8MM*11,5MM)
	22007404	PACK. LABEL/2791-CAPLE-ING(RIF1795)
	22007405	NAME PLATE/2791-CAPLE-ING(RIF1795)
	22007406	ENERGY LABEL/2791-CAPLE(RIF1795)
	37025744	VIDA TT M5*16 YSB-F (MURAT)
	40004104	BUTYL RUBBER(120*60*2MM)
570	42161391	F FLAP COVER GR/2791(TRA-GRAY) FLYP SRGF
	47014014	TAPE PET(48MM*R)TRANS BN31
	50008789	CUT PAD(75*50*15,5)
	52002341	PAD UPPER/1400 ANK
	52002342	PAD LOWER/1400 ANK
	52002367	PAD CORNER FRONT/1400 ANK
	52002368	PAD CORNER BACK/1400 ANK
	52003841	PAD LOWER GR/1400 ANK (CARTON)
	52113234	CYCLO-ISO/ PENTANE LABEL
	52166190	PAC.BAG.(1400*1950*0,020)345-360-400 HIS
	52180191	INSTALLATION KIT BAG UNPRINTED 10*15 CM
	52197957	PACKAGING BAG WARNING LABEL/ENG/NEW
	52206584	WARRANTY LABEL/CAPLE
	52208280	USER'S MANUAL/ANK.2795-CAPLE(RIF1795)
	52208357	PACKAGE CARTOON/2791 ANK(CARTON)CAPLE
	52209529	CUT PAD(374*50*13)
	52211771	VENTILATION INFORMATION PAPER / CAPLE

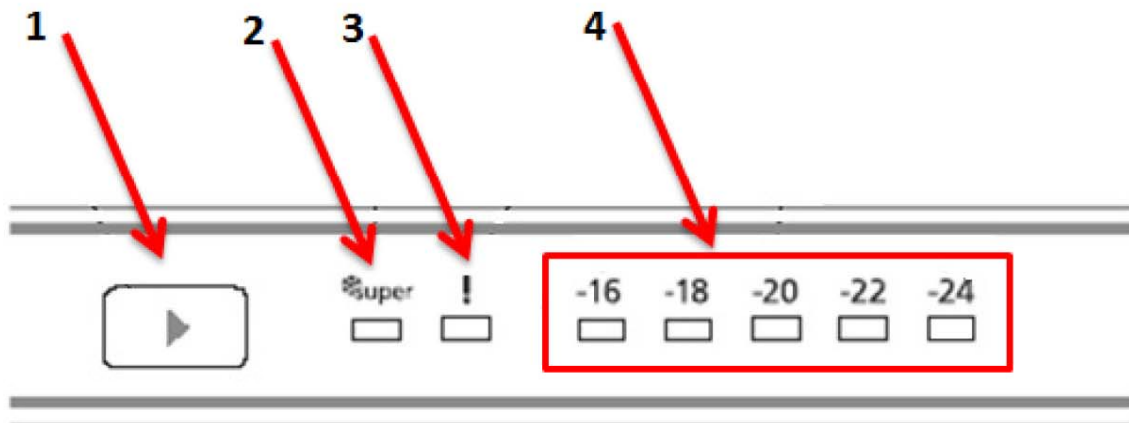




**RIF1795**

**Caple 177cm Integrated Freezer**

**Service Manual**



1. It enables the setting value of fridge to be modified and super cool mode to be activated if desired. Freezer may be set to -16,-18,-20,-22,-24 °C, SF.
2. It is the Super Freeze mode symbol.
3. It is the alarm symbol.
4. It is the freezer set value screen.

### Super Freezing Mode :

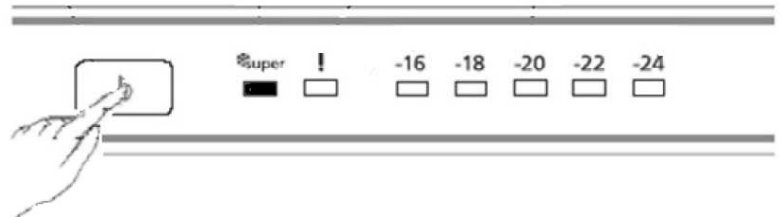
- To freeze plenty of food

#### How to use;

- Press set button until 'SUPER' led blink.

#### During this mode:

- Super freeze mode can be cancelled by the same operation of selecting.



### Demo mode :

This mode will be use for only sales points by salesman to show functions & modes to customer without operating components as a compressor, fan, motor..Etc

#### Entering Demo mode:

- Firstly the power is on , with in 1 minute set the temperature to "SUPER" and user will push "SET" button for 10 seconds , Then appliance will go on "demo function" and Super LED symbol will blink during the mode.
- All functions can be adjusted to show how they are adjusted to the customer.

#### Canceling Demo mode:

- For cancelling; Same operation will be used. If user will push SET button for 10 seconds, demo function will be cancelled.
- When appliance is Demo mode; if plug is removed or there is an electricy breakdown; demo mode will continue with current settings after user plug into or electricity breakdown finish.

## Temperature adjustment and activating SUPER COOLING Mode

Initial temperature value for Freezer Setting Indicator is -18 °C.

- Press set button once.
- When you first push this button, the last value appears on the setting indicator of the freezer.
- Whenever you press on this button, lower temperature will be set. (-16°C, -18C, -20°C, -22°C, -24°C.)
- If you continue to press, it will restart from -16°C.
- The temperature value selected before Super Freeze Mode is activated will remain the same when the mode is over or cancelled. The appliance continues to operate with this temperature value.



## Recommended Temperature Values for Fridge

When would it be adjusted?	Inner Temperature
For Minimum Freezing Capacity	-16°C
In Normal Usage	-18°C, -20°C, -22°C
For Maximum Freezing Capacity	-24°C, SF

### Sensor short open circuit defect on display

SENSOR	TEMPERATURE	USER MODE REACTION	SERVICE MODE REACTION
(1) Freezer	>+50° C or <-50° C (sensor is short or open)	Display ALARM Symbol blinks	-16 Set Symbol blinks
(2) Refrigerator	NA		NA
(3) Defrost	Short (< 100Ω) or <-50° C		-18 Set Symbol blinks
(4) AT sensor	NA		NA
Breakdown of (1) and (2)			NA
Breakdown of (1) and (3)			-16,-18 Set Symbol blinks
Breakdown of (1) and (4)			NA
Breakdown of (2) and (3)			NA
Breakdown of (2) and (4)			NA
Breakdown of (3) and (4)			NA
Breakdown of (2) and (3) and (4)			NA
Breakdown of (1) and (3) and (4)			NA
Breakdown of (1) and (2) and (4)			NA
Breakdown of (1) and (2) and (3)			NA
Breakdown of all sensors			NA

### Component defect on display

DEFECT TYPE	DETAILS	USER MODE REACTION	SERVICE MODE REACTION
Compressor Defect	D sensor temp >-10° C (D sensor temp. unchanges for 10 min. continuous compressor run)	Display ALARM Symbol blinks	-20 Set Symbol blinks

### Compressor Defect Error on display

\*\*\*NOTE: To prevent the wrong alarms, this alarm status is disabled on following conditions:

- During the first 6 hours after the product was firstly connected.
- During the defrost period
- During the 30 minutes after a defrost
- During the first 2 hours that if door was open.

### **Entering service mode:**

Push SET button continuously for 10 seconds when -24 set symbol active. Appliance will enter service mode 10 sec. later.

### **Canceling service mode:**

Push SET button continuously for 10 seconds when -24 set symbol active. Appliance will enter service mode 10 sec. later.

If service man do not push any buttons for 30 minutes when appliance is in service mode.

Service mode will be canceled automatically.

Service mode will be used only by professionals.

### **1.Push Starting program**

Push set button 5 second at service mode.

Freezer set value screen light as components are checked.

“-16 set symbol” will light when compressor is ON

“-18 set symbol” will light heater will be ON

“-20 set symbol” will light fan will be ON

### **2.Push Forced Defrost and Forced Canceling of Defrost**

-18 set symbol will light during this mode.. Mode can be canceled manually or automatically.

Manual canceling will be done by pushing SET button. Symbol will be OFF if defrost is canceled manually. Appliance will return to initial Service mode reaction.

If manual canceling of this function is not performed in 40 min.

Service mode will be canceled. Appliance will check if defrost is finished in this 40min. If YES, appliance will go on from previous set values. But if defrost is not finished , appliance will go on defrost till it finishes and then go on from previous set values.

## Replacement Fin Evap Group

***Warning: Make sure the unit is unplugged.***

- Unscrew the condenser screws. (4 pcs)

- Push the condenser up side and remove.



- Remove the sealing material at the housing.

- Fix the heat exchanger pipe.



- Unscrew the 2 screws shown at the picture.



- Remove the flap cover supports left and right.



-Take out the fin evap group.



-Remove the fin evap strafoam.



-Remove the fin evap box.



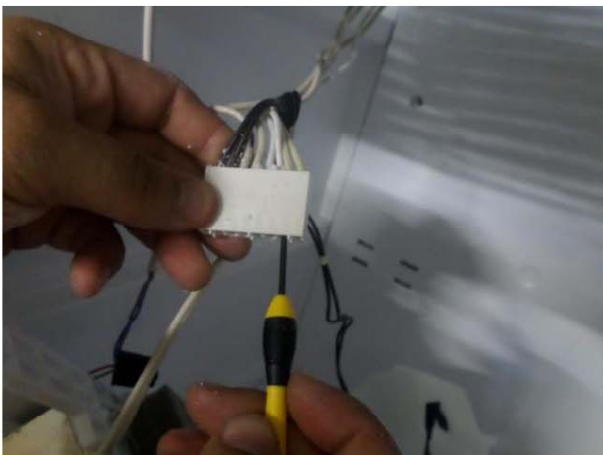
- Remove the black metal clippers.



- Detach the evaporator from the defrost heater.



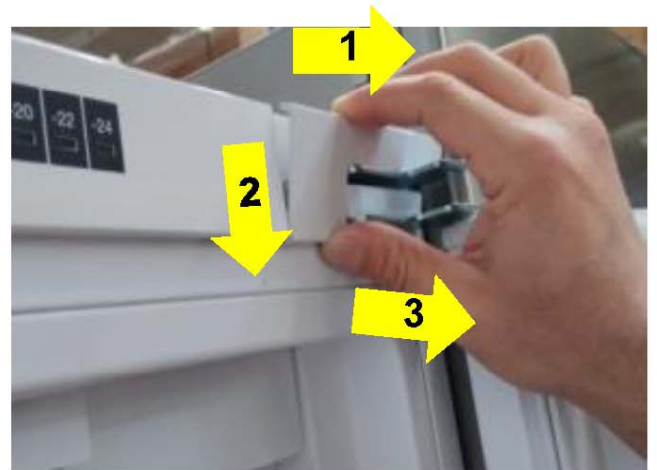
-Take out the fin evap heater connector.



## Replacement Head Panel and Main Board

1. First remove cover by pulling leftward as shown below.

2. Remove other cover by pulling backward from top side of the cover as shown below



3. Unscrew screws marked with red circle at the picture below.



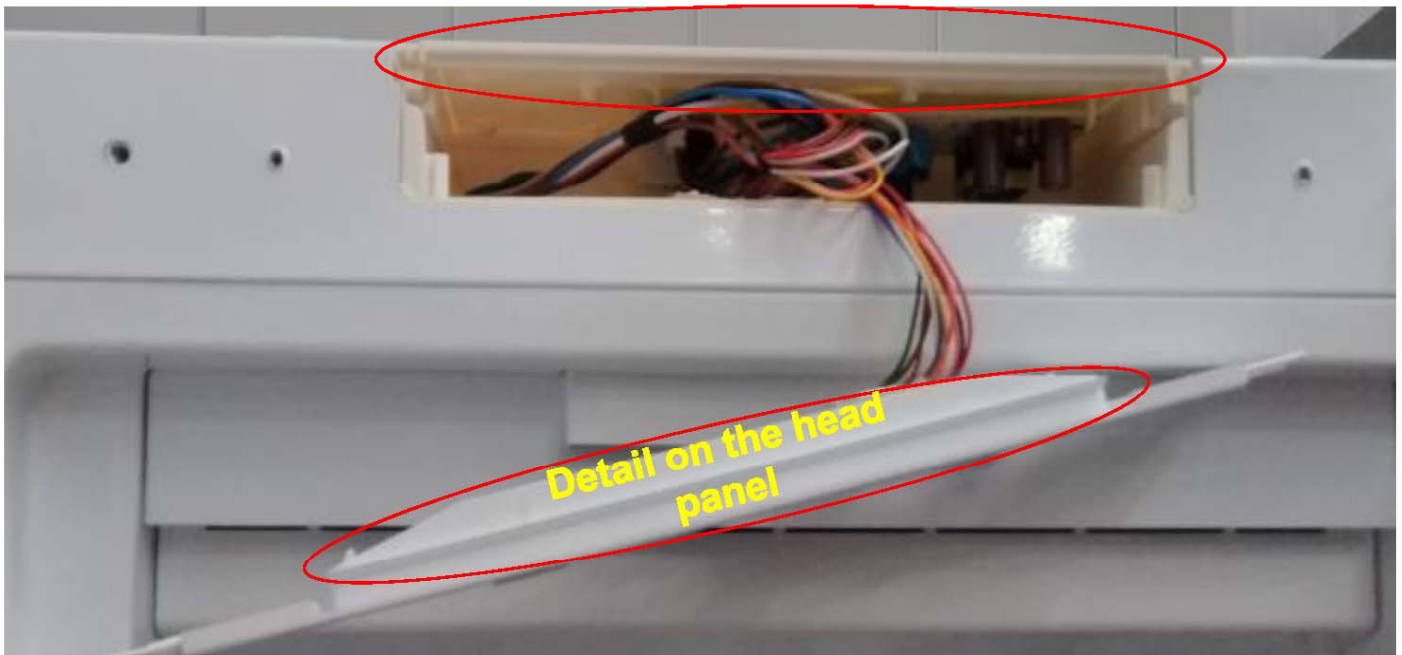
4. Disassemble snapfits at the area marked with red circle at the picture below .  
It can be used any suitable tool to disassemble.



5. Unplug socket on the board assembled head panel.



6. To reassemble head panel ; first plug socket mentioned before and then place detail on the head panel to related detail on the cover and then push head panel to place snapfits marked with red circle below.



7. Then screw head panel with screwdriver and assemble covers and complete head panel assembly.



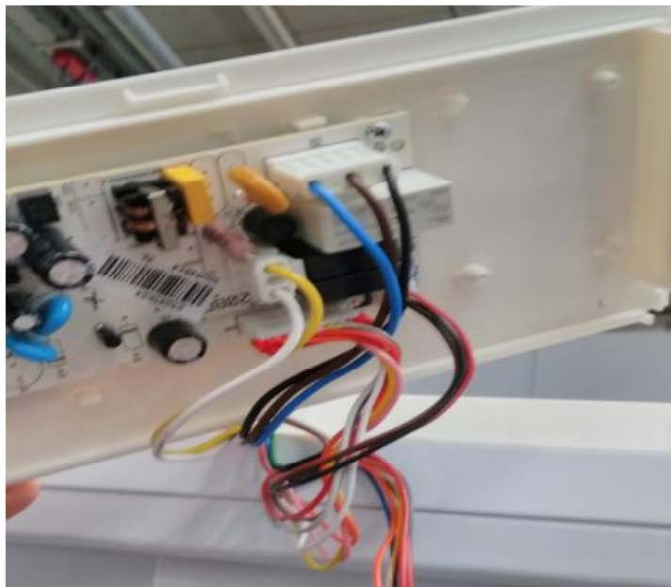
8. Pull cover backward and remove from housing



9. Then unplug all sockets.



10. To reassemble cover first plug all sockets related place on the board.



11. To reassemble cover pay attention to assemble with right direction. Details on the cover and housing should be matched each other

