



CM110

Cable Built in Combination Microwave 46cm

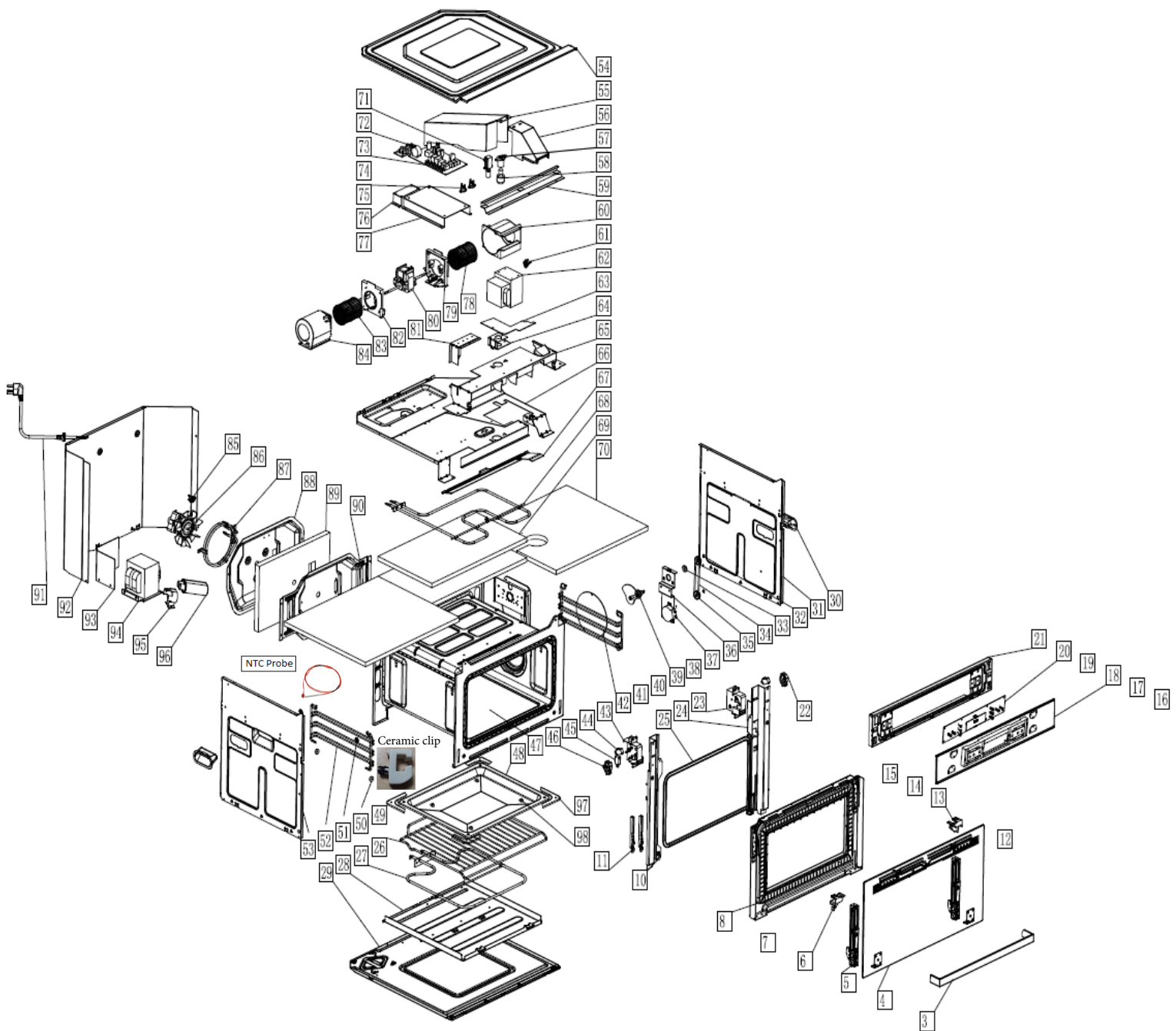


Technical Manual



CM110

Caple Built in Combination Microwave 46cm





CM110

Caple Built in Combination Microwave 46cm

Item	Part Number	Description	Addition Info	Quantity
3	1122400314	Handle		1
4	SB-538-C-1	Outer glass component	Outer glass	1
			Fixing plate for handle	1
			Connecticut plate for glass	2
5	1170500101	Door Hinge		2
6	1171000101	Left door switch plug		1
8	2200500102	Door decoration liner assembly	Door decoration liner	1
	1170200103		Inner Glass	1
	1300100101		PPS Seal frame	1
10	2200800103	left support		1
11	2203700101	Inner hinge		2
13	1171000102	Right door switch plug		1
18	MB-537-D-1.2	Control panel component	Control panel glass	1
			Fixing plate timer	1
20	1440040010901	Control board		1
21	2200200104	Control panel bracket		1
22	1300300102	Right rotating arm		1
23	1300200102	Right door switch base		1
24	2200800104	Right support		1
25	1300400101	Door seal		1
26	1170700202	Big rack		1
27	14400100201	Bottom heater		1
28	2203200101	Fixing plate for bottom heater		1
29	2203400101	Bottom plate		1
30	1320400101	Holder		2
31	2202800102	Right panel		1
32	2203500101	wheel tablet for stirrer motor		1
33	1290700102	Gasket for stirrer motor		2
34	1300900101	Strap		1
35	1300800101	Pulley		2
36	2201600101	Fixing plate for stirrer motor		1
37	14400200101	stirrer motor		1
39	2201700201	stirrer assembly		1
42	2201300101	stirrer cover		1
43	1300200101	Left door switch base		1



CM110

Caple Built in Combination Microwave 46cm

Item	Part Number	Description	Addition Info	Quantity
44	14401400102	Micro Switch(3 terminals)		1
45	14401400101	Micro Switch(2 terminals)		2
46	1300300101	Left rotating arm		1
47	2204100102	Cavity assembly		1
48	220310010101	Tray		1
50	1300500101	Wheel for side shelves		4
51	2203800101	Star clip		4
52	1170700103	Side shelves		2
53	2202800101	Left panel		1
54	2203000101	Top Panel		1
55	2202100102	Rare vent		1
56	2202100101	Front vent		1
57	1301100101	Bulb holder		1
58	14400600101	bulb		1
59	2203300101	Electrical parts shield		1
60	1170800102	Right vent		1
61	14401100101	Thermostat 155°C		1
62	14400100401	Magnetron		1
63	2202400101	cover plate for top panel		1
64	2202500101	Fixing plate for bulb		1
65	2202200101	Connecting plate of top panel		1
66	2202000101	Top cover		1
67	2202600101	vent cover		1
68	1440010010101	Top heater		1
69	1980100101	Top Insulation cotton		1
70	1980100102	Top Insulation cotton 2		1
71	1470400101	Wax motor assembly		1
72	14401600201	filter board		1
73	14400500102	Power board		1
75	14401100102	Thermostat 140°C		2
76	2204200101	Fixing plate for filter board		1

1171100101

Ceramic clip - Serial number pre AB061924020887

CSCM110

Ceramic clip - Serial number after AB061924020887



CM110

Caple Built in Combination Microwave 46cm

Item	Part Number	Description	Addition Info	Quantity
77	2202500201	Fixing plate for power board		1
78	1171300102	Centrifugal fan (Right)		1
79	1170900102	fixing plate for right vent		1
80	14400200102	fan motor		1
81	2202300101	top panel cover		1
82	1170900101	fixing plate for left vent		1
83	1171300101	Centrifugal fan (Left)		1
84	1170800101	left vent		1
85	1440110010401	Thermostat 125°C		1
86	142090020501	convection fan		1
87	1420500402	circle heater		1
88	2201900101	rare insulation cotton cover		1
89	1980100201	Rare Insulation cotton		1
90	2201800101	Fixing plate for fan motor		1
91	14401200108	Power cord		1
92	2202900101	Rare panel		1
93	MB-353-A	Magnetic isolation plate		1
94	14400800101	transformer		1
95	2202700101	High voltage capacitor fixing clip		1
96	14400900101	High voltage capacitor		1
97	1301400101	protection angle		4
98	1301500101	Silicone pad for wire rack		4

14401700102	NTC Probe
CMMSR	Complete microswitch right
CMMSL	Complete microswitch left
NCDC108	Complete door
11603005001	Ceramic plate