



RBF3

Caple built under Freezer

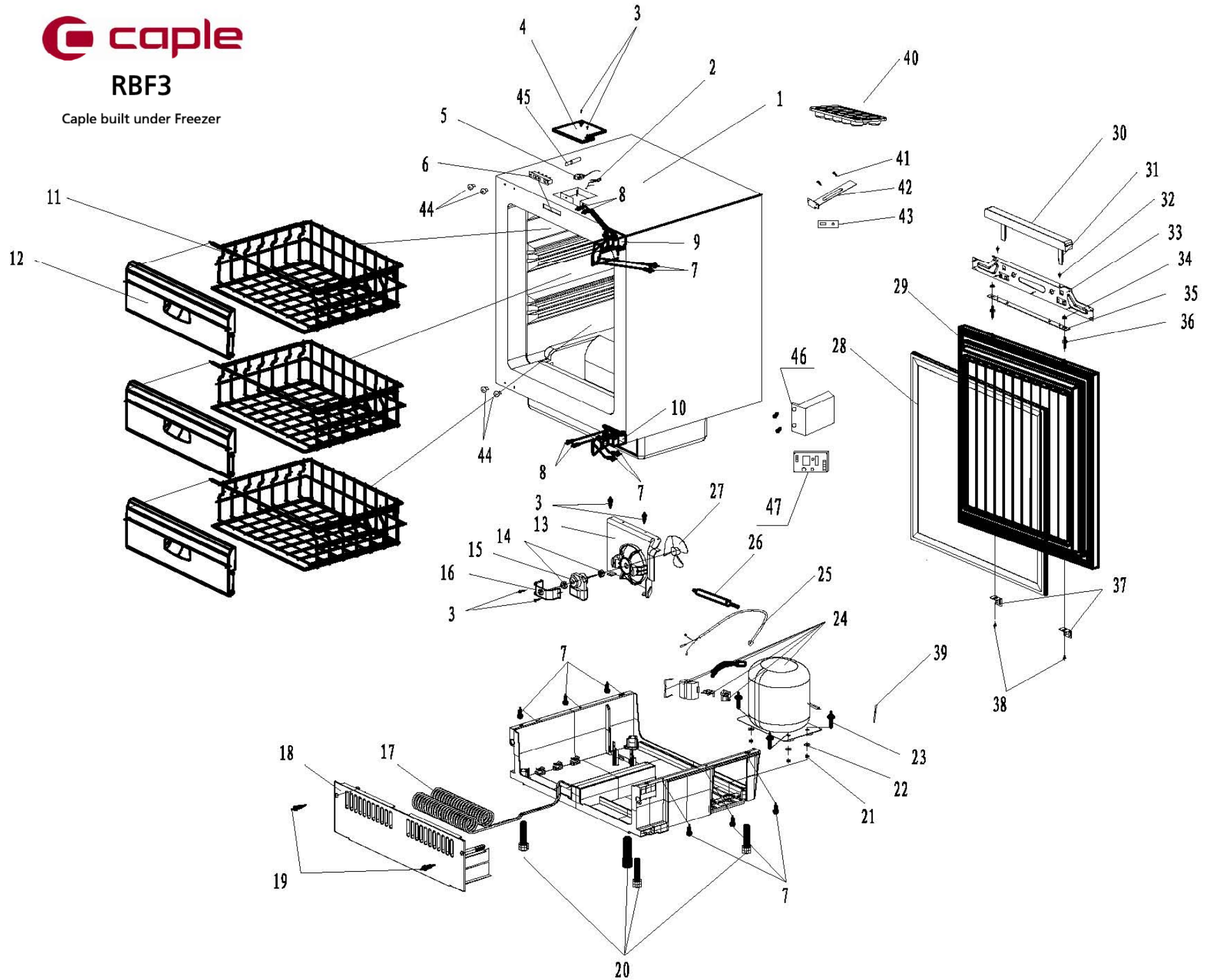


Technical information



RBF3

Caple built under Freezer





RBF3 - Caple built under Freezer

| Item | Part Code | Description | Qty |
|------|-----------------|---|-----|
| 1 | 2.00.TQ020029-0 | Foamed Cabinet | 1 |
| 2 | 1.36.DTQ201-100 | Thermostat wire | 1 |
| 3 | 1.12.B39160-AB7 | Self Tapping Screw | 6 |
| 4 | 1.06.TQ7370-100 | Thermostat box lid | 1 |
| 5 | 1.32.2711D6-2TQ | Thermostat | 1 |
| 6 | 1.27.01D2XX-100 | Display panel | 1 |
| 7 | 1.13.T05013-104 | Flange Screw | 4 |
| 8 | 1.12.F50150-AB4 | Countersunk screw | 4 |
| 9a | 1.11.01101TQ-01 | Top hinge (prior to sn B15/16/17BU600cap1502XXX) | 1 |
| 9b | 1.11.01101TQ-02 | Top hinge (from sn B15/16/17BU600cap1502XXX) | 1 |
| 10a | 1.11.03101TQ-01 | Bottom hinge (prior to sn B15/16/17BU600cap1502XXX) | 1 |
| 10b | 1.11.03101TQ-02 | Bottom hinge (from sn B15/16/17BU600cap1502XXX) | 1 |
| 11 | 1.42.A0TQ02-100 | Wire drawers | 3 |
| 12 | 1.06.TQ9F71-100 | Wire drawer front panel | 3 |
| 13 | 1.06.TQ9J70-101 | Fan cover | 1 |
| 14 | 1.38.04PF027-01 | Fan motor rubber fixing pad | 2 |
| 15 | 1.33.DTQ431-100 | Fan motor | 1 |
| 16 | 1.11.61TQ027-01 | Wind rack | 1 |
| 17 | 2.20.A0TQ00-101 | Condenser | 1 |
| 18 | 1.06.TQ9K71-101 | Plenth | 1 |
| 19 | 1.12.B48250-AB4 | Self Tapping Screw | 2 |
| 20 | 1.06.TQ2121-101 | Adjustable feet | 4 |
| 21 | 1.14.Z06000-006 | Nut | 4 |
| 22 | 1.14.A06000-00F | Washer | 4 |
| 23 | 1.13.G60280-104 | Flange Screw | 4 |
| 24 | 1.10.12133G-OXX | Compressor | 1 |
| 25 | 1.28.BD2124-101 | Power Cord | 1 |
| 26 | 1.46.0400TQ-013 | Dry filter | 1 |
| 27 | 1.06.TQ7511-027 | Wind leaf | 1 |
| 28 | 1.39.201102-101 | Door seal | 1 |
| 29 | 2.01.R0TQ02-100 | Foamed Door | 1 |
| 30 | 1.06.TQ9L70-101 | Decorates Cover A | 1 |
| 31 | 1.06.TQ9L71-101 | Decorates Cover B | 2 |
| 32 | 1.12.A05080-BF5 | Flange Screw | 2 |
| 33 | 2.24.0915802-03 | Junction panel | 1 |
| 34 | 1.14.E06000-00F | Nut | 2 |
| 35 | 2.24.0915802-02 | Adjustment board | 1 |
| 36 | 1.13.Z60035-105 | Adjuster bolt | 2 |
| 37 | 1.11.75101TQ-01 | Fixed block | 2 |
| 38 | 1.13.G60080-104 | Flange Screw | 2 |
| 39 | 2.20.B2TQ00-000 | Charging pipe | 1 |
| 40 | 1.46.1402TQ-002 | Ice tray | 1 |
| 41 | 1.12.F39120-BT4 | Self Tapping Screw | 18 |
| 42 | 1.11.82105TQ-05 | Connecting pin | 1 |



RBF3 - Caple built under Freezer

| Item | Part Code | Description | Qty |
|------|-----------------|--|-----|
| 43 | 1.11.76101TQ-01 | Connecting bracket | 1 |
| 44 | 1.06.TQ2620-142 | Screw hole plug | 8 |
| 45 | 1.06.TQ9N70-100 | Thermostat box cover connecting axis cover | 1 |
| 46 | 1.06.TQ7120-014 | Timer box | 1 |
| 47 | 1.27.01D4XX-100 | Timer PCB | 1 |



RBF3

Caple B.Under Freezer

