

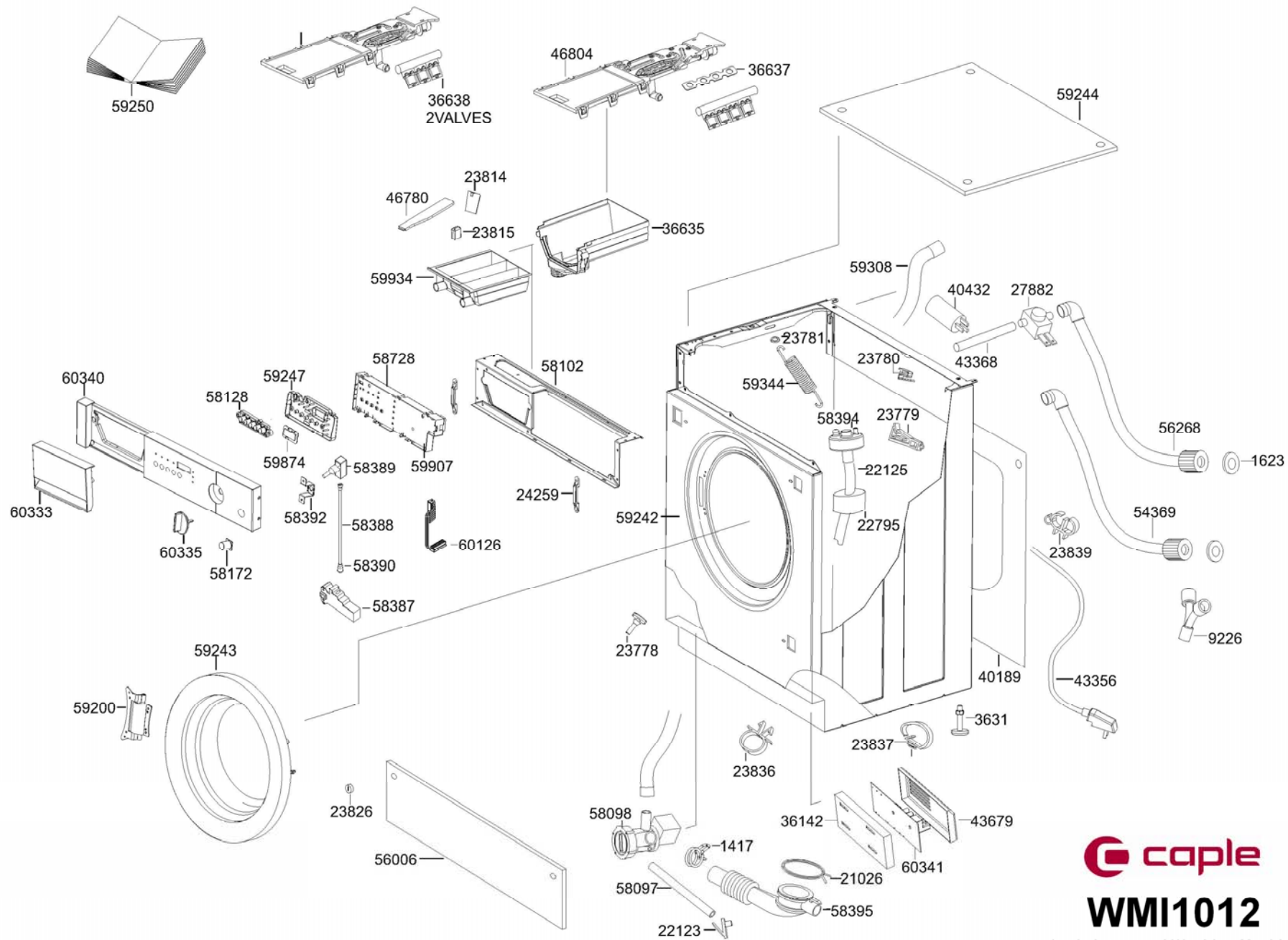


WMI1012

Caple Integrated Washing Machine



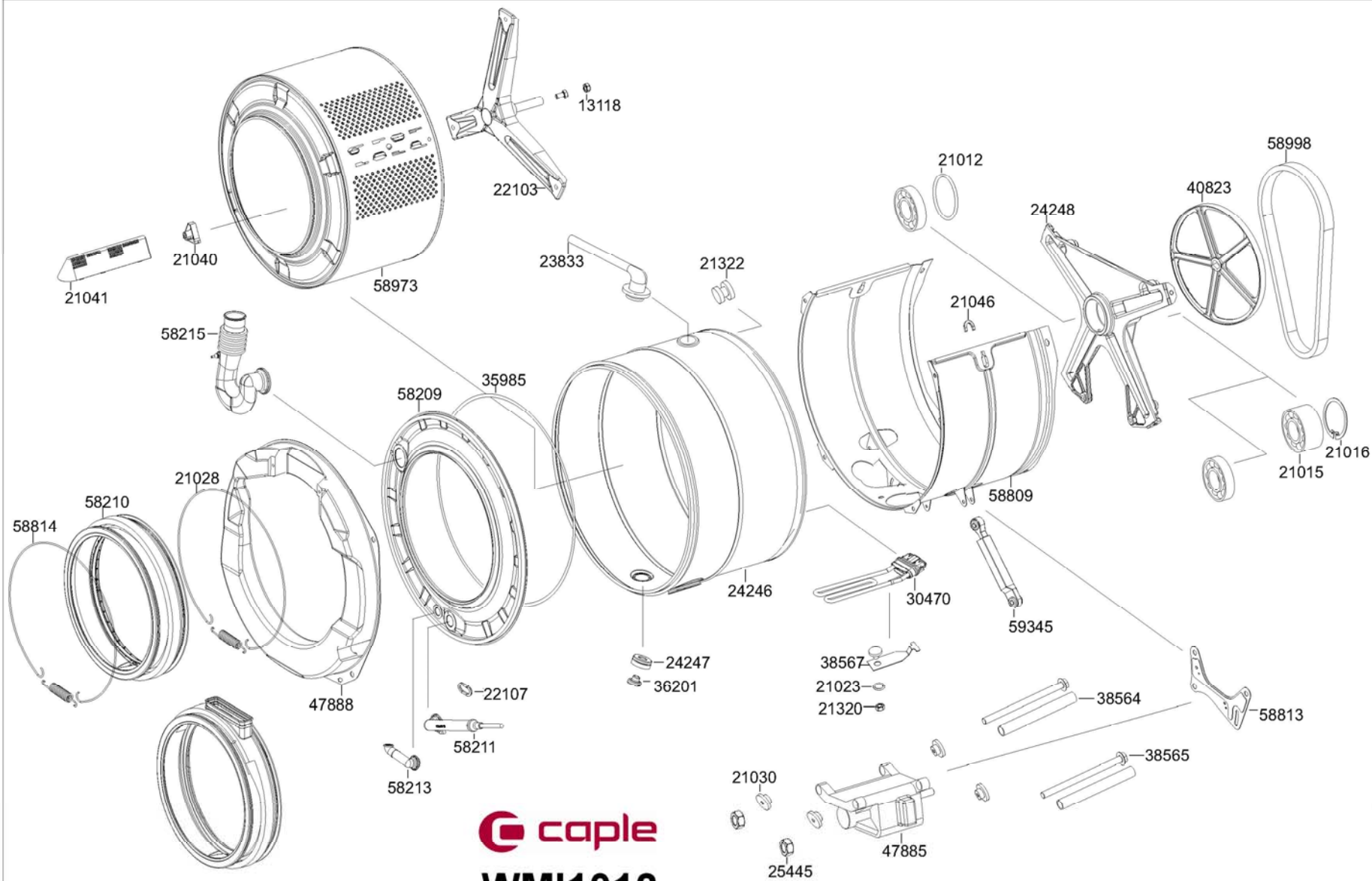
TECHNICAL
INFORMATION



caple

WMI1012

Caple Integrated Washing Machine

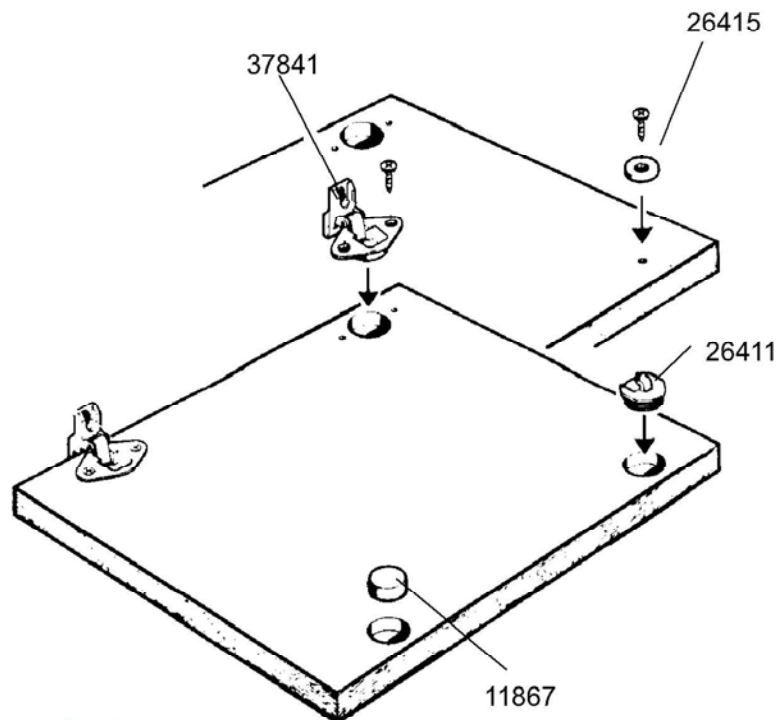
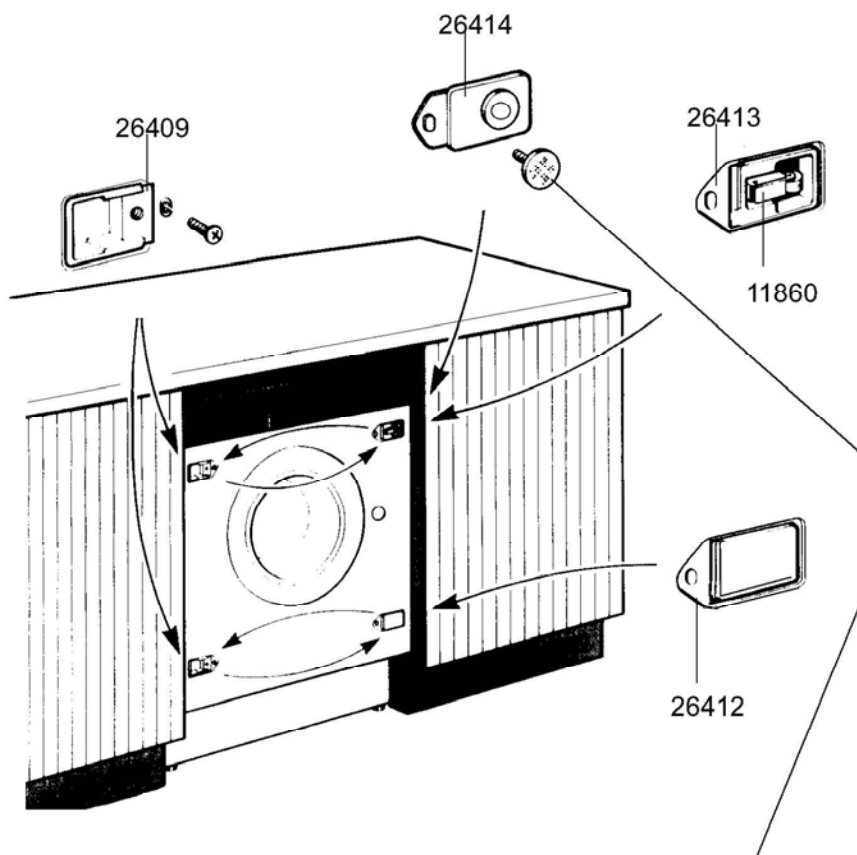


caple

WMI1012

Caple Integrated Washing Machine

26706 = GRUPPO COMPLETO ACCESSORI
ACCESSORIES BAG
ZUBEHÖR KOMPLETT



46252
SCHABLONE
MASCH.FISS.MASS
TEMPLATE DOOR

 **caple**
WMI1012

Caple Integrated Washing Machine



WMI1012 Caple Integrated Washing Machine

Sort	Code	Qty	Desc
1	691913525	1	COPIA CARBONCINI CESET
1417	893210058	1	HOSE CLAMP ARTICLE 10405-D.40
1623	973410008	1	FILTER
3631	975770055	4	FOOT
9152	893210086	2	HOSE CLAMP ARTICLE 18164
9226	761890009	1	CONNECTOR INTAKE HOSES 2196
11860	977690023	1	LOCK
11867	758450095	1	CAP
13118	897210169	1	WASHER
21012	754130590	1	SEAL
21015	972490021	1	BEARING BALLS
21016	890210146	1	SEEGER RING
21023	754130591	1	SEAL
21026	893210134	1	CLAMP
21028	893210135	1	CLAMP
21030	754010067	4	RUBBER
21040	18290182	3	BRACKET FIX. BASKET SUPP.
21041	760070101	3	AGITATOR 516XT
21046	760570108	2	BUSHING SPRING 516XT
21320	892610078	1	NUT
21322	768450178	1	CAP
22103	878411321	1	BASKET SUPPORT
22107	766330379	1	PROTECTION PRESSURE SWITCH TUBE ST95
22123	768450180	1	DRAIN HOSE CAP
22125	758850028	1	AIR TRAP
22795	788971092	1	PIPE SOUNDPROOFING ST95
23778	754010077	2	RUBBER
23779	763450078	2	RETAINER CABLE FOR LH SIDE PANEL A60
23780	763450079	5	RETAINER CABLE FOR CROSS-PIECE AND SIDE PANEL A60
23781	760570115	2	BUSHING SPRING A60N
23814	765450021	1	DIVIDER LIQUID DETERGENT CONTAINER A60N
23815	767760017	1	DRAIN TRAP TRAY A60N
23826	769370890	2	SCREW
23833	758971128	1	STEAM DRAIN HOSE
23836	763450080	3	FIXING CLAMP
23837	763450081	1	FIXING CLAMP
23839	768411379	2	MOUNT TUBES AND CABLE A60N
24246	689170182	1	TANK
24247	754130656	1	SEAL
24248	875220034	1	HUB
24259	763850089	2	RETAINER FRONT PANEL A64AP
25445	892610177	2	NUT
26409	760450035	2	BASE HINGE MOUNT ST105



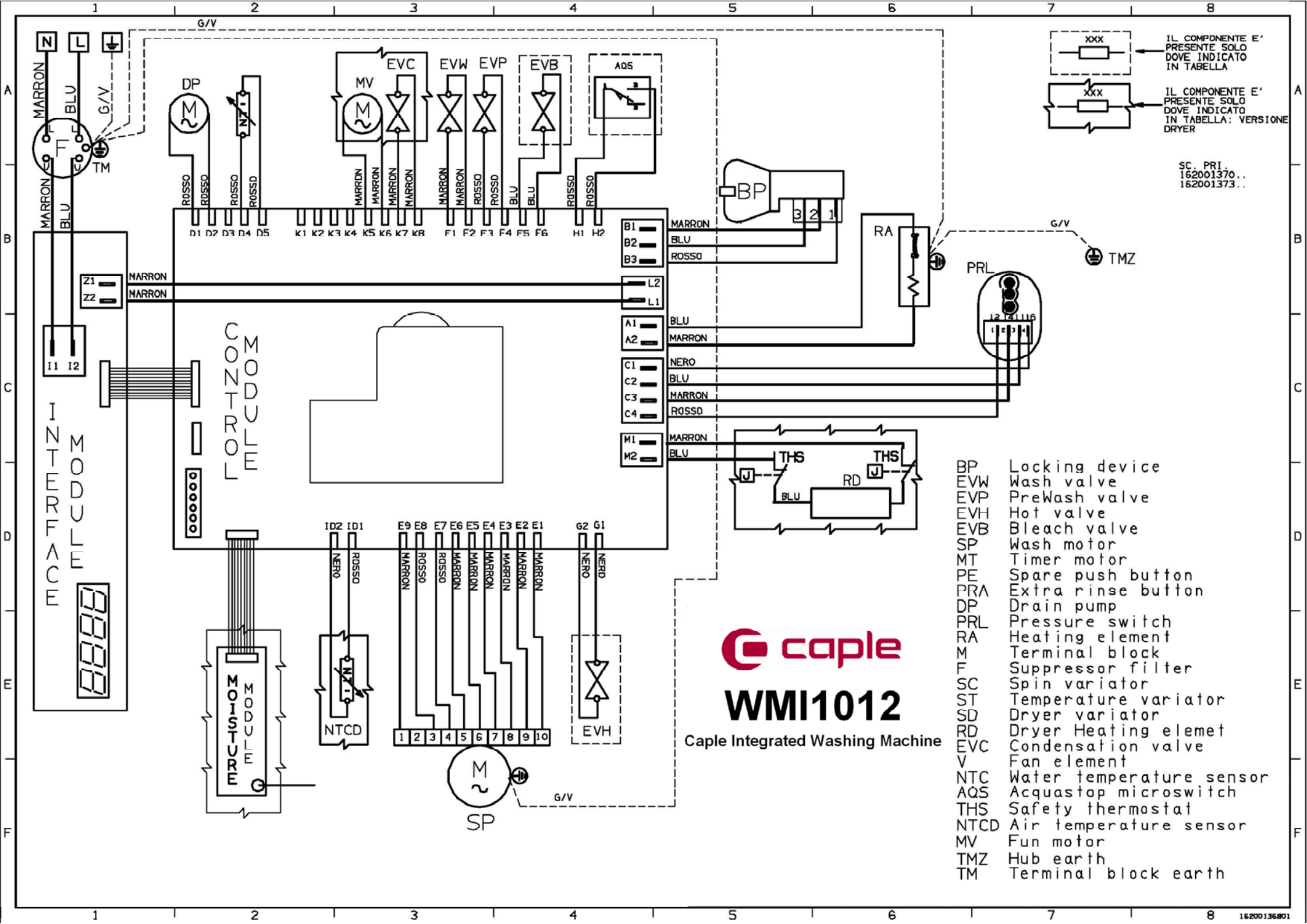
WMI1012 Caple Integrated Washing Machine

Sort	Code	Qty	Desc
26411	768530013	1	DOWEL
26412	768450208	1	PLUG
26413	768411481	1	LOCK SUPPORT
26414	768411482	1	SUPP.MAGNET.LOCK
26415	977690114	1	MAGNET.LOCK
26706	697450194	1	HINGE ASS.+ACCESS.
27882	813050082	1	WATER VALVE
30470	806890318	1	HEATING ELEMENT
35985	754130903	1	TANK COVER GASKET
36142	768411874	1	MOUNT MONODOSE ELECTRONIC BOARD
36201	977870006	1	TEMPERATURE FEELER
36635	768910025	1	HOPPER
36637	754130920	1	VALVES GASKET
36638	693050107	1	WATERVALVE DOUBLE
37841	681330613	2	DOOR HINGE
38564	12810441	2	MOTOR SPACER
38565	899371339	2	MOTOR FIXING SCREW
38567	698290393	1	FIXING BRACKET
40189	16930520	1	BACK PANEL
40432	813410286	1	ANTI-NOISE FILTER
40823	876370037	1	PULLEY
43356	691290464	1	CLAMP + CABLE
43368	758971929	1	PIPE
43679	766330678	1	PROTECTION ELECTRONICS MODULE
46252	715040059	1	
46780	762171695	1	COVER DETERGENT COMPARTMENT BWM20
46804	762171696	1	COVER HOPPER, LONG BWM20
47885	795210381	1	MOTOR
47888	971970082	1	CONTERWEIGHT
47888	971970099	1	COUNTERWEIGHT
48148	899371494	1	SCREW SELF-STARTING 7P X 32 CHEESE HEAD ZN
50412	899371522	3	SCREW 6M X 20 TCS STAINLESS
52287	914772269	1	BOOKLET INSTRUCTION PANEL INSTALLATION
54369	758972568	1	WATER INLET H.COLD L1500
56006	769450456	1	FRONT PLINTH
56268	758972637	1	INLET HOSE HOT WATER L1,5
58097	758972670	1	HOSE DRAIN
58098	792970179	1	PUMP DRAIN
58102	18935479	1	CROSS-PIECE FRONT UPPER 2003
58128	766411749	1	BUTTON BUTTON STRIP
58172	766411750	1	PULSANTE APERTURA OBLO BI
58209	682171976	1	COVER TANK LB 2003
58210	754131303	1	BELLOWS DOOR



WMI1012 Caple Integrated Washing Machine

Sort	Code	Qty	Desc
58211	754890868	1	DUCT EXHAUST WATER
58213	758972671	1	HOSE DRAIN
58215	758972672	1	TUBE INTAKE TANK
58387	814490538	1	SERR/BLOC.MECC.SERIE DA
58388	890212287	1	CAVO RINVIO BLOCCO P.
58389	766411751	1	PULSANTE CON ATT.A CROCE
58390	764170338	2	GUIDA X CAVO METALL.MICRO
58392	18290645	1	BRAKET BUTTON DOOR
58394	816210339	1	PRESS.1LIV+ANTIT(50-22)B1
58395	758972678	1	HOSE DRAIN
58728	768412873	1	MOUNT PROTECTION BOARD
58809	63252572	1	FACIA MOUNT TANK
58813	18412876	1	BRAKET MOUNT MOTOR PULLEY
58814	893210346	1	FASC.MOLLA FIS.SOFFIE-INV
58973	878412880	1	GR.MONT.CESTO LB 5/10
58998	751610070	1	BELT DRIVE
59200	691330952	1	ASSEMBLY HINGE PORTHOLE
59242	513130046	1	FACING SHORT
59243	695260053	1	ASSEMBLY DOOR
59244	12172008	1	PANEL COVER INTERNAL
59245	768910031	1	DOOR DRAWER DETERGENT
59247	768412892	1	FINE CORSA DIFFUSORE INC.
59250	914772629	1	BOOKLET INSTRUCTION
59308	758972697	1	HOSE DRAIN
59344	895092622	2	MOLLA TRAZ./SOSP.VAS.LB
59345	970170031	2	DAMPER
59874	769350055	1	VISOR
59900	899371707	3	SCREW FIXING MOUNT BASKET
59907	696290799	1	SCHEDA INT.UT.DIG.LED ROS
59934	769210321	1	VASCHETTA DET.LAVATR.SIFN
60126	821290664	1	CABL.PIATTINA DISP.-CUORE
60333	768910035	1	DOOR DRAWER
60335	694975345	1	KNOB
60340	763737660	1	FRONT PANEL
60341	696290818	1	TIMER 166800006-167100027



IL COMPONENTE E' PRESENTE SOLO DOVE INDICATO IN TABELLA

IL COMPONENTE E' PRESENTE SOLO DOVE INDICATO IN TABELLA: VERSIONE DRYER

SC. PRI.
162001370...
162001373...

- BP Locking device
- EVW Wash valve
- EVP PreWash valve
- EVH Hot valve
- EVB Bleach valve
- SP Wash motor
- MT Timer motor
- PE Spare push button
- PRA Extra rinse button
- DP Drain pump
- PRL Pressure switch
- RA Heating element
- M Terminal block
- F Suppressor filter
- SC Spin variator
- ST Temperature variator
- SD Dryer variator
- RD Dryer Heating element
- EVC Condensation valve
- V Fan element
- NTC Water temperature sensor
- AQS Acquastop microswitch
- THS Safety thermostat
- NTCD Air temperature sensor
- MV Fun motor
- TMZ Hub earth
- TM Terminal block earth

caple

WMI1012

Caple Integrated Washing Machine

