



WMI1011

Caple Integrated Washing Machine



TECHNICAL
INFORMATION

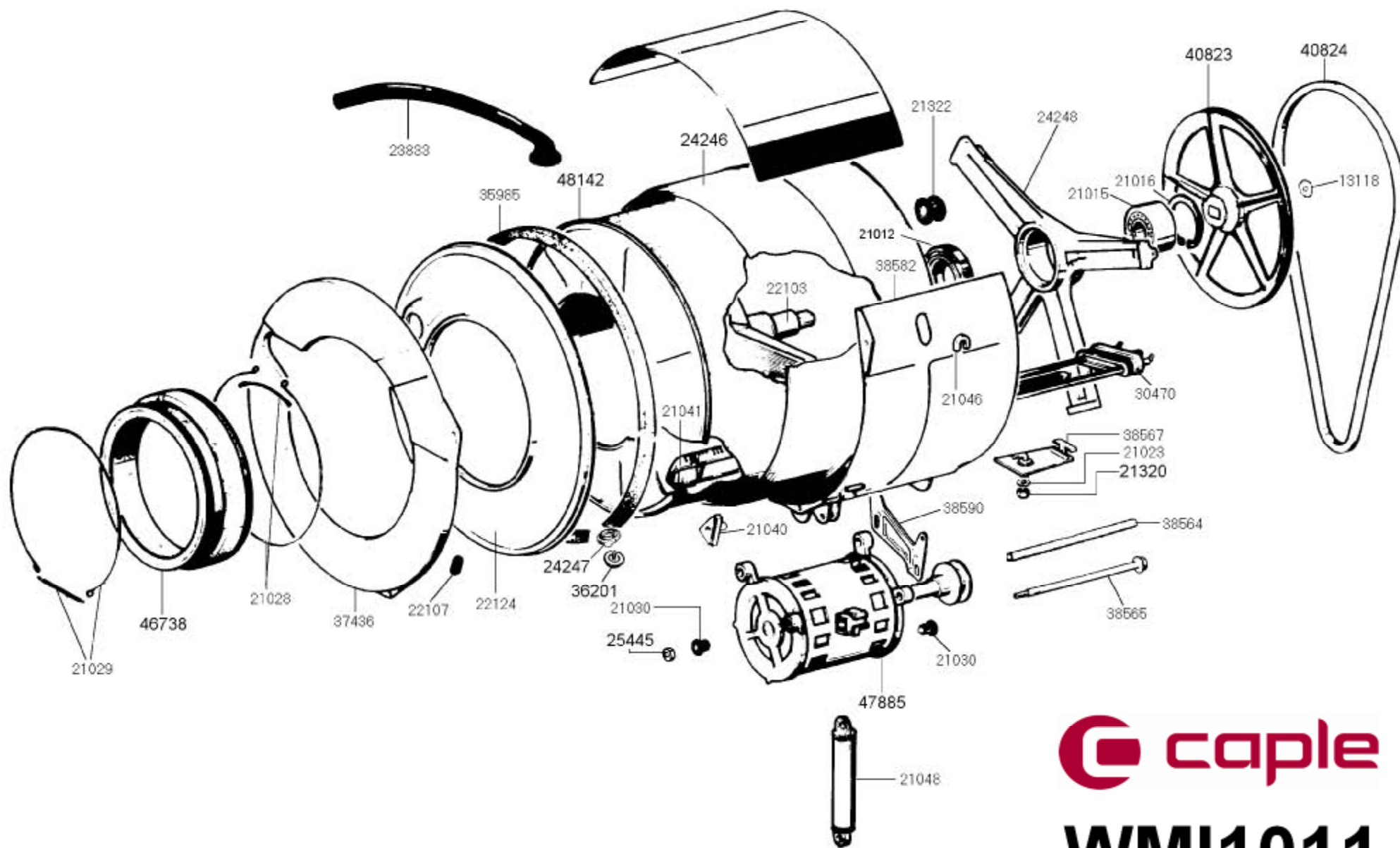


WMI1011

Caple Integrated Washing Machine



Caple washing machine and washer dryer specifications	
Model	WMI 1011
Type	Washing machine
Family	Full integrated
Kitchen door on machine	Yes
Color	White
Direct Print	Descriptions
Spin speed (rpm)	600-1200
Wahing capacity (kg)	5 kg
Drying capacity (kg)	-
Automatic variable charge	Yes
Drain pump with self clean filter	Yes
Cold water	Yes
Hot water	Yes
Unbalance charge system	Yes
Washing programmes	23
Drying programmes	-
Variable temperature	Yes
On-Off push button	Yes
Intensive washing push button	Yes
Intensive rinse push button	Yes
No spin function	Yes
Stop with water in the tank function	Yes
Variable spin speed knob	Yes
Dimensions (W X H X D in mm)	596x818x546
Packaged dimensions (W X H X D in mm)	660x950x680
VOLT	240V/50Hz
Tank	SS
Drum	SS
Door diameter	270 mm
Drum volume	45 Lt
net weight	72
Gross weight	79
ENERGY LABEL (energy-washing-final umidity)	AAA



 **caple**

WMI1011

Caple Integrated Washing Machine



WMI1011 Caple Integrated Washing Machine

Sort	Code	Qty	Desc
1032	772530082	1	WINDOW
1623	973410008	1	FILTER
2412	824610038	1	LAMP
3631	975770055	4	FOOT
7591	768970611	1	HOSE
9226	761890009	1	CONNECTOR INTAKE HOSES 2196
11860	977690023	1	LOCK
11867	758450095	1	CAP
13118	897210169	1	WASHER
21012	754130590	1	SEAL
21015	972490021	1	BEARING BALLS
21016	890210146	1	SEEGER RING
21023	754130591	1	SEAL
21026	893210134	1	CLAMP
21028	893210135	1	CLAMP
21029	893210136	1	CLAMP
21030	754010067	4	RUBBER
21040	18290182	3	BRACKET FIX. BASKET SUPP.
21041	760070101	3	AGITATOR 516XT
21046	760570108	2	BUSHING SPRING 516XT
21048	970170011	2	SHOCK ABSORBER
21320	892610078	1	NUT
21322	768450178	1	CAP
22103	878411321	1	BASKET SUPPORT
22107	766330379	1	PROTECTION PRESSURE SWITCH TUBE ST95
22123	768450180	1	DRAIN HOSE CAP
22124	682170763	1	TUB COVER
22125	758850028	1	AIR TRAP
22795	788971092	1	PIPE SOUNDPROOFING ST95
22796	768450185	1	FILTER CAP
23630	769350008	2	VIEWER
23778	754010077	2	RUBBER
23779	763450078	2	RETAINER CABLE FOR LH SIDE PANEL A60
23780	763450079	5	RETAINER CABLE FOR CROSS-PIECE AND SIDE PANEL A60
23781	760570115	2	BUSHING SPRING A60N
23782	895090360	2	TANK SPRING
23785	816450087	1	ON-OFF PUSH-BUTTON SWITCH
23792	691330333	1	PORT-HOLE HINGE
23796	763850088	1	HOOK
23801	758971131	1	INLET HOSE
23806	768411378	1	CONTROLS PANEL RETAINER
23810	763870099	1	CONTROLS PANEL GEM



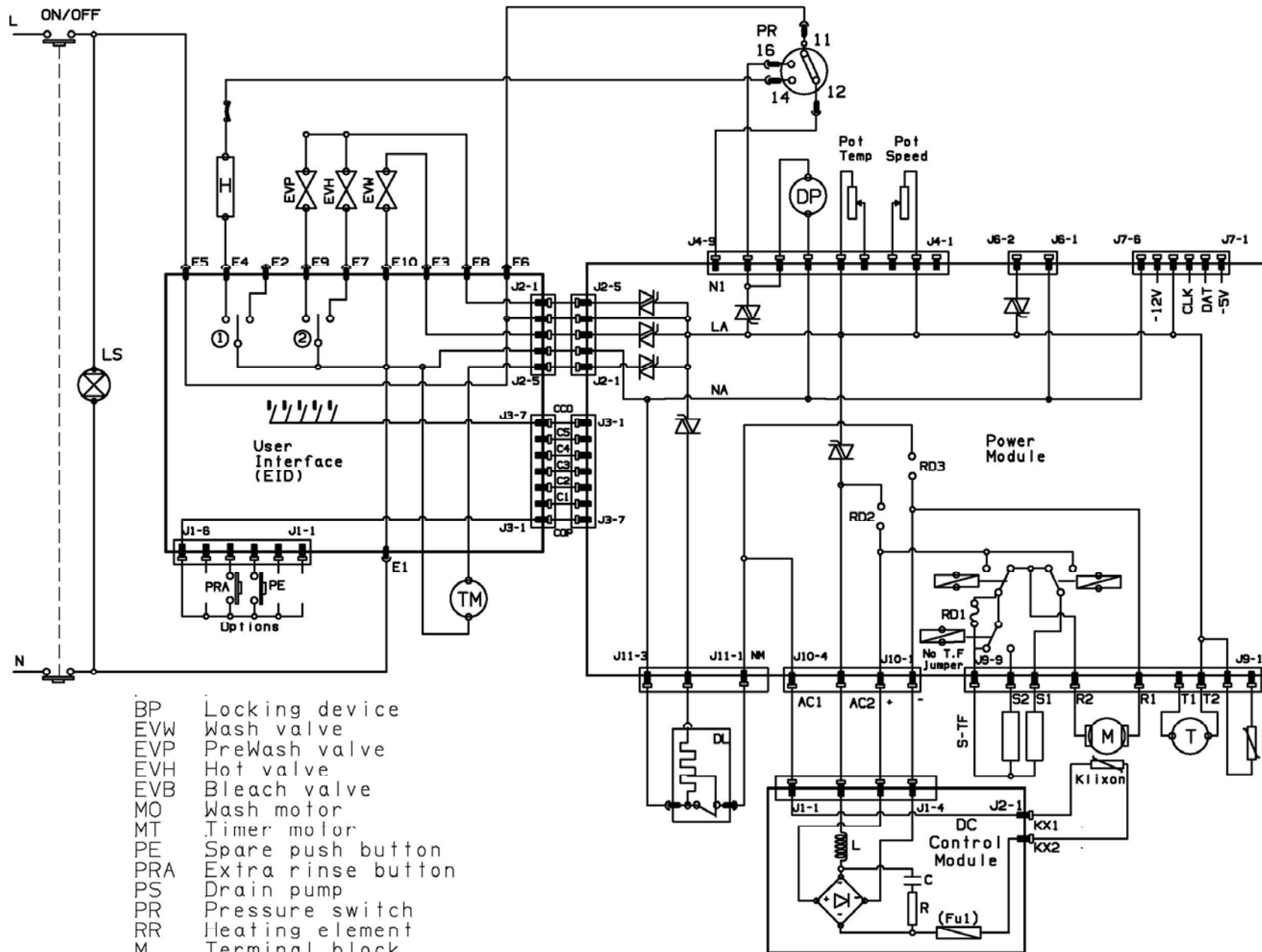
WMI1011 Caple Integrated Washing Machine

Sort	Code	Qty	Desc
23814	765450021	1	DIVIDER LIQUID DETERGENT CONTAINER A60N
23815	767760017	1	DRAIN TRAP TRAY A60N
23826	769370890	2	SCREW
23829	769210049	1	DETERGENT DISPENSER
23832	895090361	1	SPRING
23833	758971128	1	STEAM DRAIN HOSE
23834	758971132	1	EMERGENCY DRAIN HOSE
23836	763450080	3	FIXING CLAMP
23837	763450081	1	FIXING CLAMP
23839	768411379	2	MOUNT TUBES AND CABLE A60N
23865	763970009	1	DROPS TRAY
23880	816450088	2	PUSH-BUTTONS SET
23882	819130432	1	VALVE
23883	768411380	1	VALVE HOLDER
24246	689170182	1	TANK
24247	754130656	1	SEAL
24248	875220034	1	HUB
25445	892610177	2	NUT
26399	682170916	1	TOP
26409	760450035	2	BASE HINGE MOUNT ST105
26411	768530013	1	DOWEL
26412	768450208	1	PLUG
26413	768411481	1	LOCK SUPPORT
26414	768411482	1	SUPP.MAGNET.LOCK
26415	977690114	1	MAGNET.LOCK
26706	697450194	1	HINGE ASS.+ACCESS.
27882	813050082	1	WATER VALVE
30470	806890318	1	HEATING ELEMENT
35985	754130903	1	TANK COVER GASKET
36201	977870006	1	TEMPERATURE FEELER
36635	768910025	1	HOPPER
36637	754130920	1	VALVES GASKET
36638	693050107	1	WATERVALVE DOUBLE
37436	971970070	1	COUNTERWEIGHT
37841	681330613	2	DOOR HINGE
38564	12810441	2	MOTOR SPACER
38565	899371339	2	MOTOR FIXING SCREW
38567	698290393	1	FIXING BRACKET
38582	63251662	1	TANK UPPER BAND
38590	18412003	1	MOTOR SUPPORT
39436	792970139	1	DRAIN PUMP
40189	16930520	1	BACK PANEL



WMI1011 Caple Integrated Washing Machine

Sort	Code	Qty	Desc
40432	813410286	1	ANTI-NOISE FILTER
40813	754890848	1	DRAIN SLEEVE
40823	876370037	1	PULLEY
40824	751610047	1	BELT
43356	691290464	1	CLAMP + CABLE
43365	684530659	1	COVERING
43367	513130037	1	SHORT FACADE
43368	758971929	1	PIPE
46252	715040059	1	
46722	816210316	1	PRESSURE SWITCH
46723	816290687	1	TIMER
46725	811650220	1	ELECTRONIC MODULE
46738	754131092	1	BELLOWS
46778	768412325	2	ELECTRONIC MODULE SUPPORT
46779	762171694	2	UPPER COVER F. ELECT.MOD.
46780	762171695	1	COVER DETERGENT COMPARTMENT BWM20
47885	795210381	1	MOTOR
47891	811730224	2	COMMUTATOR
47987	691650226	1	
48142	681410427	1	DRUM
48570	914772078	1	INSTRUCTIONS MANUAL
49955	811730229	1	COMMUTATOR L=20
49989	18935252	1	FRONT UPPER CROSSPIECE
51067	762810542	1	SPACER BULL EYE 1MM
54369	758972568	1	WATER INLET H.COLD L1500
56004	695260047	1	WHITE PORTHOLE ASS.
56005	697690183	1	LOCK
56006	769450456	1	FRONT PLINTH
56009	766411704	3	PUSH BUTTON
56268	758972637	1	INLET HOSE HOT WATER L1,5
57234	694975249	1	SPIN SPEED ADJUST.KNOB
57235	766134449	1	DETERG.DRAWER COVER PLATE
57237	694975251	1	TEMPERATURE ADJUSTM,KNOB
57239	762773668	1	TEMPERATURE DISC WM 1600
57271	694975254	1	TIMER KNOB WM CREDA
57272	762773670	1	DISCO TIMER LE 1600 CREDA
57274	763737339	1	CONTROL PANEL WMI 1011
57275	762171961	1	HOPPER+VALVES WASH-PREV.L

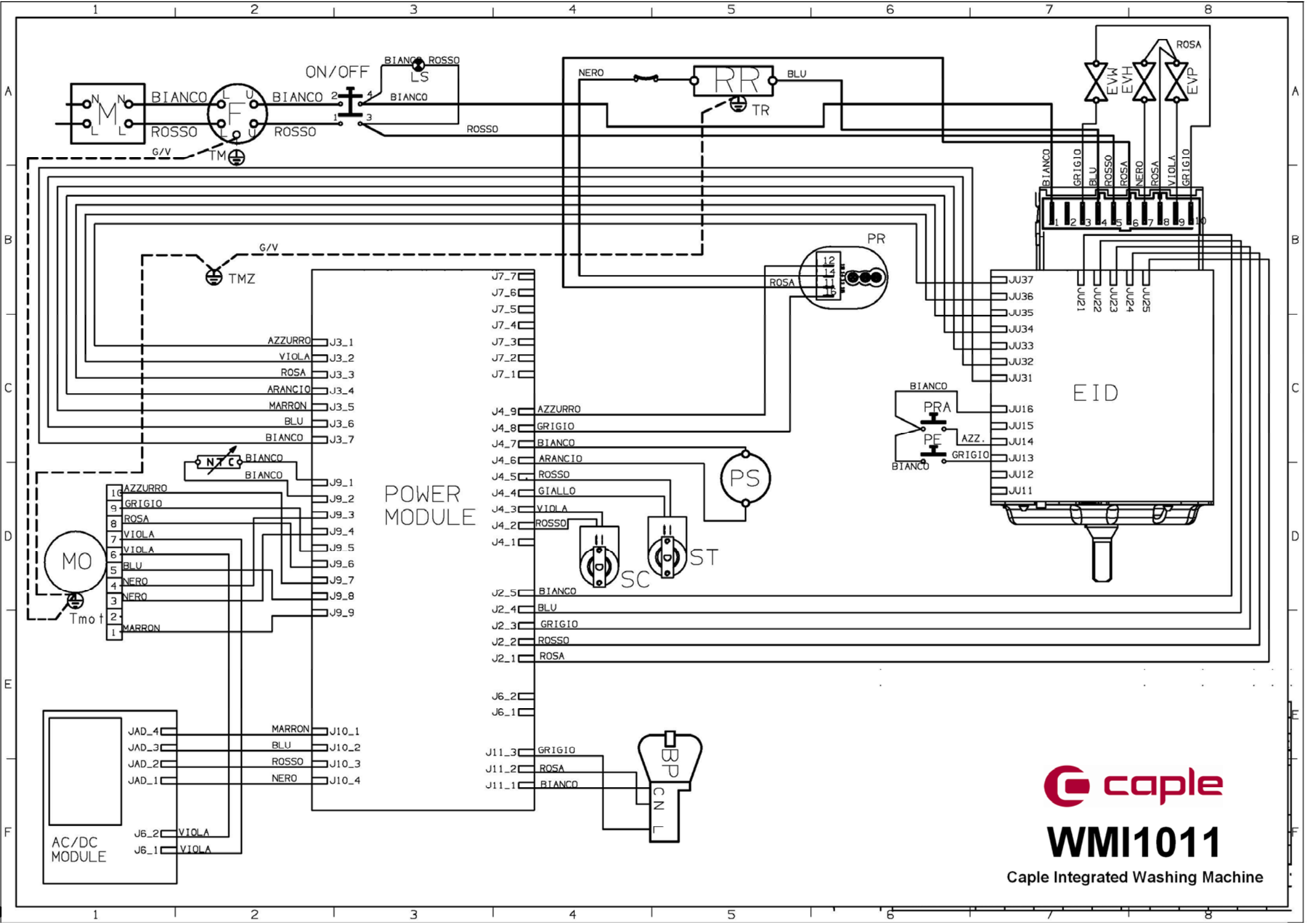


- BP Locking device
- EVB Wash valve
- EVP PreWash valve
- EVH Hot valve
- EVB Bleach valve
- MO Wash motor
- MT Timer motor
- PE Spare push button
- PRA Extra rinse button
- PS Drain pump
- PR Pressure switch
- RR Heating element
- M Terminal block
- F Suppressor filter
- SC Spin variator
- ST Temperature variator
- SA Dryer variator
- RA Dryer Heating element
- ECN Condensation valve
- V Fan element
- NTC Temperature sensor



WMI1011

Cape Integrated Washing Machine



WMI1011

Caple Integrated Washing Machine