

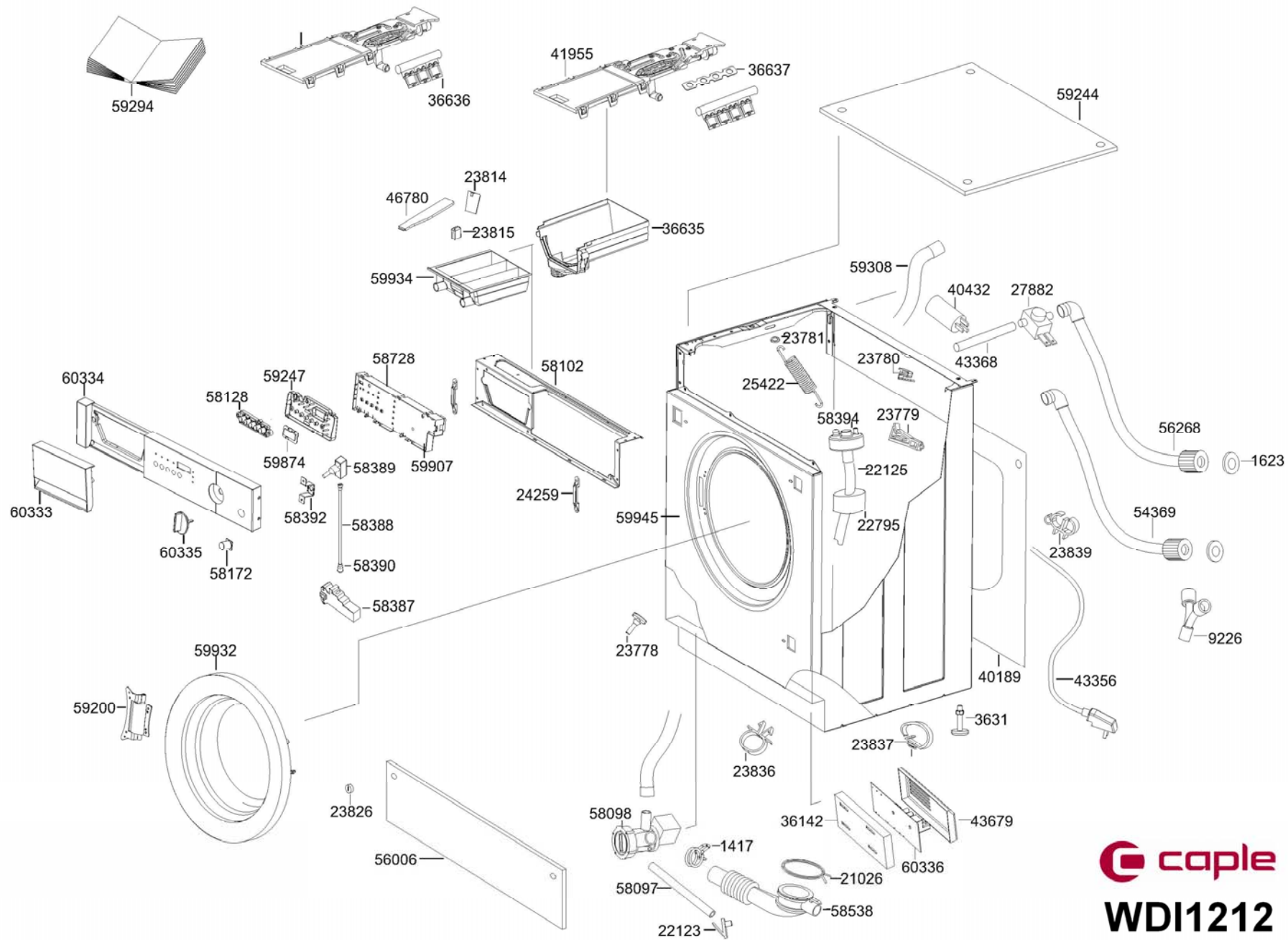


WDI1212

Caple Integrated Washer Dryer
(1600 rpm)



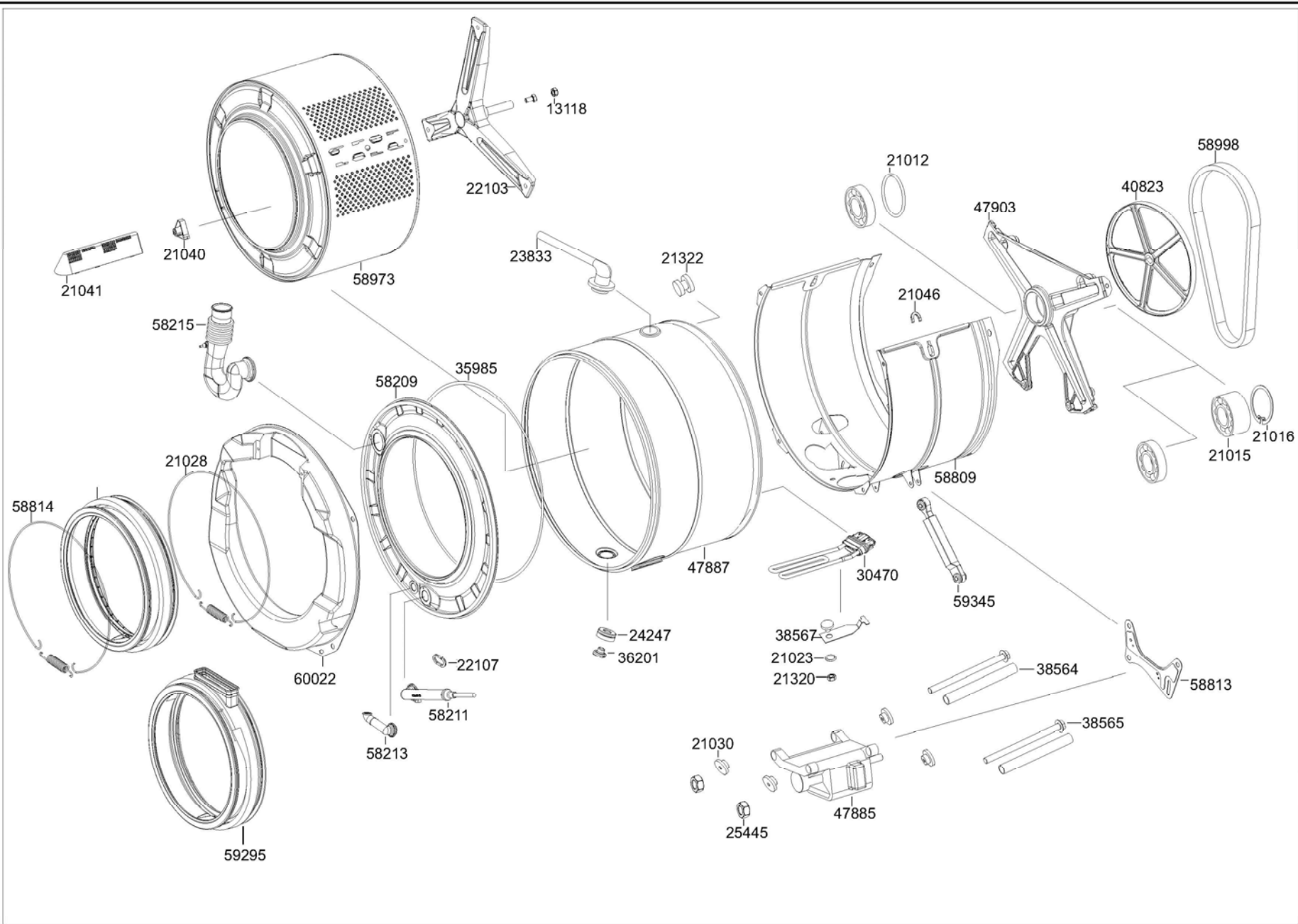
TECHNICAL
INFORMATION



 **caple**

WDI1212

Caple Integrated Washer Dryer
(1600 rpm)

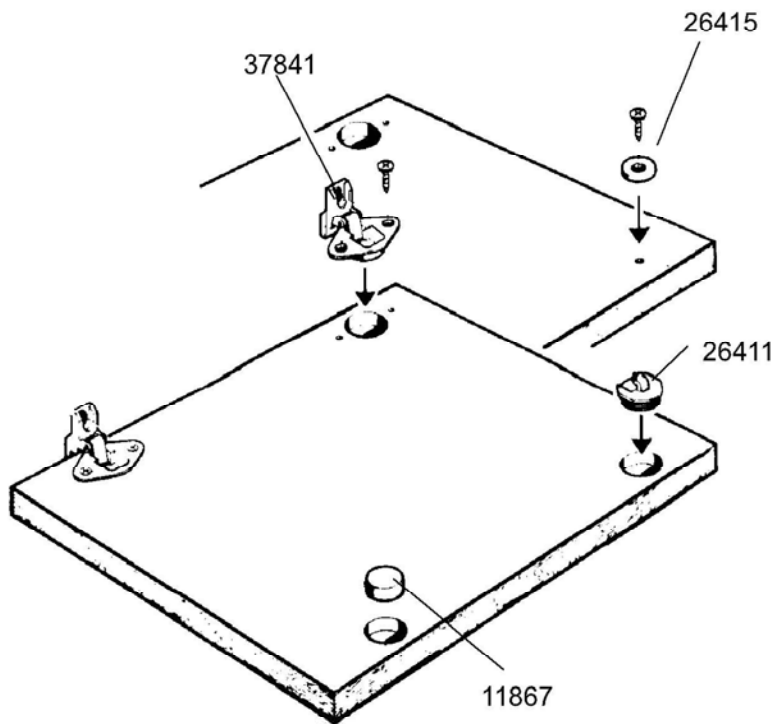
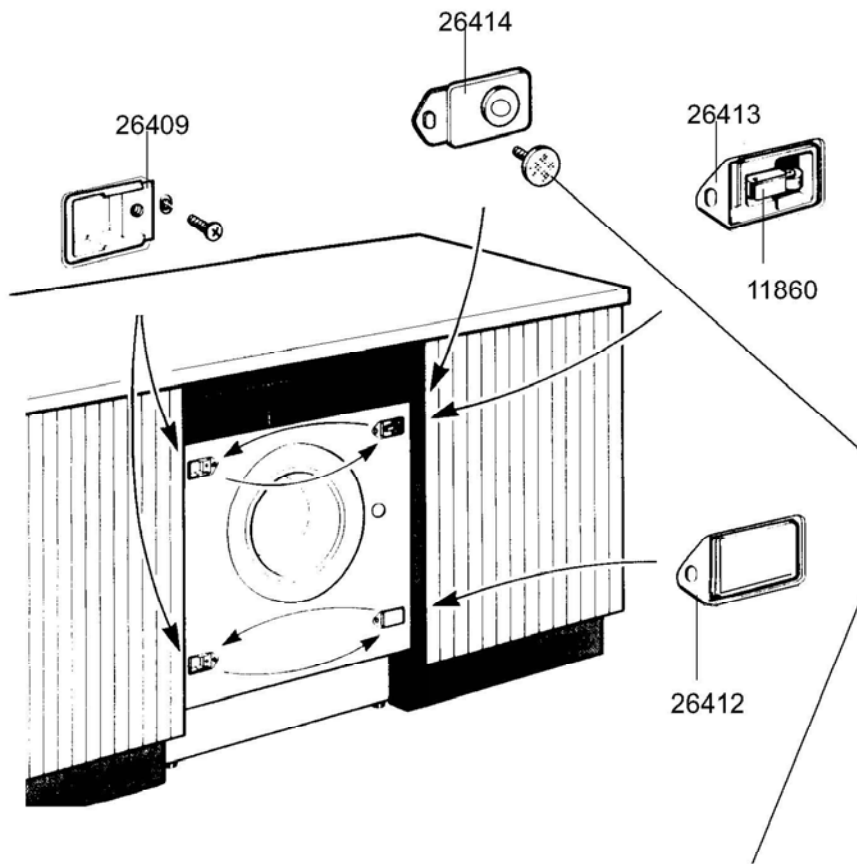


caple

WDI1212

Caple Integrated Washer Dryer
(1600 rpm)

**26706 = GRUPPO COMPLETO ACCESSORI
ACCESSORIES BAG
ZUBEHÖR KOMPLETT**



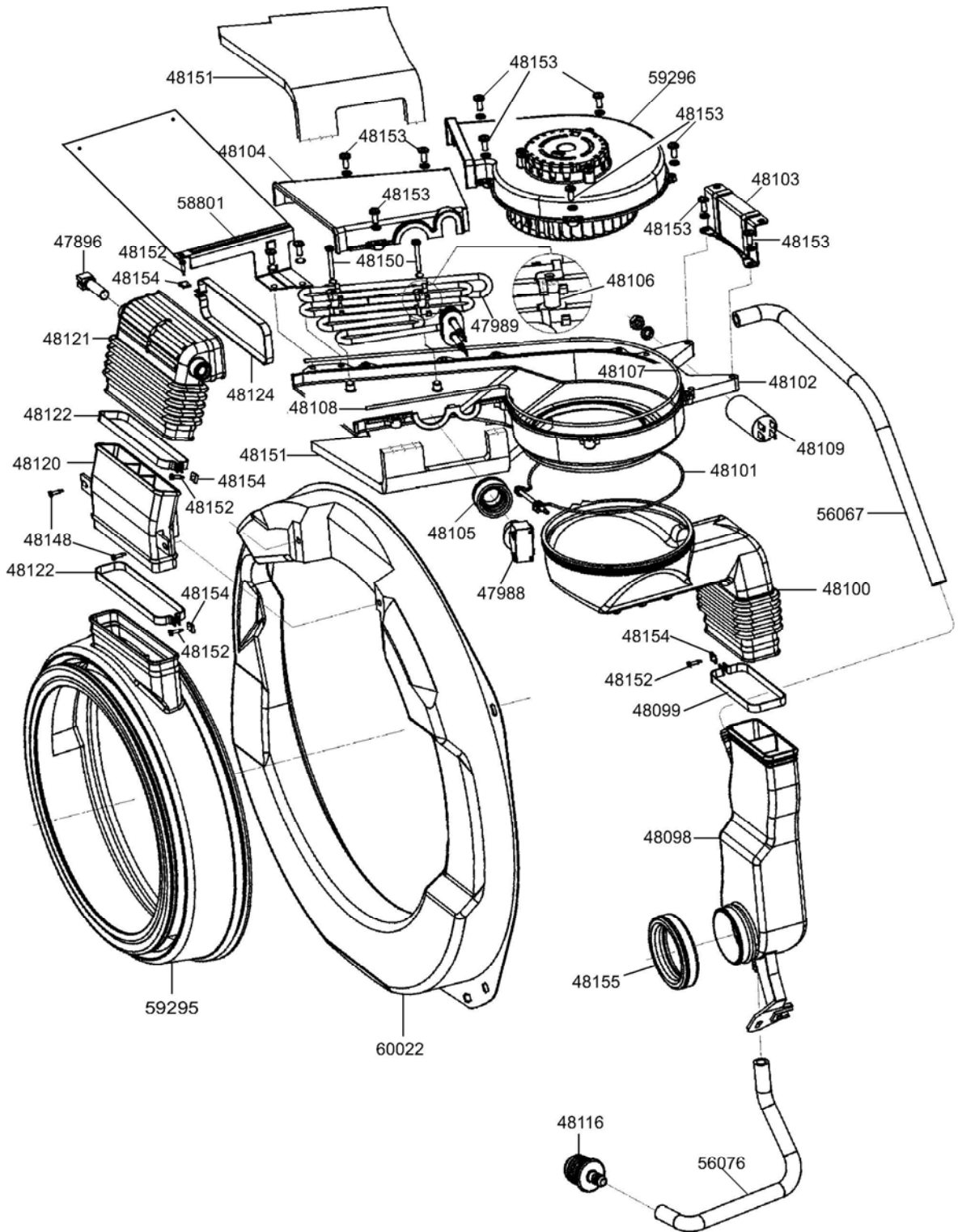
46252
SCHABLONE
MASCH.FISS.MASS
TEMPLATE DOOR

52287= Istruzioni montaggio massello
Instruction book for door mounting
Anleitung für Türbefestigung



WDI1212

Caple Integrated Washer Dryer
(1600 rpm)



 **caple**

WDI1212

Caple Integrated Washer Dryer
(1600 rpm)



WDI1212 Caple Integrated Washer Dryer 1600rpm

Sort	Code	Qu	Desc
1	691913525	1	COPIA CARBONCINI CESET
1417	893210058	1	HOSE CLAMP ARTICLE 10405-D.40
1623	973410008	1	FILTER
3631	975770055	4	FOOT
9152	893210086	2	HOSE CLAMP ARTICLE 18164
9226	761890009	1	CONNECTOR INTAKE HOSES 2196
11860	977690023	1	LOCK
11867	758450095	1	CAP
13118	897210169	1	WASHER
21012	754130590	1	SEAL
21015	972490021	1	BEARING BALLS
21016	890210146	1	SEEGER RING
21023	754130591	1	SEAL
21026	893210134	1	CLAMP
21028	893210135	1	CLAMP
21030	754010067	4	RUBBER
21040	18290182	3	BRACKET FIX. BASKET SUPP.
21041	760070101	3	AGITATOR 516XT
21046	760570108	2	BUSHING SPRING 516XT
21320	892610078	1	NUT
21322	768450178	1	CAP
22103	878411321	1	BASKET SUPPORT
22107	766330379	1	PROTECTION PRESSURE SWITCH TUBE ST95
22123	768450180	1	DRAIN HOSE CAP
22125	758850028	1	AIR TRAP
22795	788971092	1	PIPE SOUNDPROOFING ST95
23778	754010077	2	RUBBER
23779	763450078	2	RETAINER CABLE FOR LH SIDE PANEL A60
23780	763450079	5	RETAINER CABLE FOR CROSS-PIECE AND SIDE PANEL A60
23781	760570115	2	BUSHING SPRING A60N
23814	765450021	1	DIVIDER LIQUID DETERGENT CONTAINER A60N
23815	767760017	1	DRAIN TRAP TRAY A60N
23826	769370890	2	SCREW
23829	769210049	1	DETERGENT DISPENSER
23833	758971128	1	STEAM DRAIN HOSE
23836	763450080	3	FIXING CLAMP
23837	763450081	1	FIXING CLAMP
23839	768411379	2	MOUNT TUBES AND CABLE A60N
24247	754130656	1	SEAL
24259	763850089	2	RETAINER FRONT PANEL A64AP
25359	766330415	1	PROTECTION RIM SLBS955
25422	895090409	2	SPRING
25445	892610177	2	NUT
26409	760450035	2	BASE HINGE MOUNT ST105
26411	768530013	1	DOWEL
26412	768450208	1	PLUG



WDI1212 Caple Integrated Washer Dryer 1600rpm

Sort	Code	Qu	Desc
1	691913525	1	COPIA CARBONCINI CESET
26413	768411481	1	LOCK SUPPORT
26414	768411482	1	SUPP.MAGNET.LOCK
26415	977690114	1	MAGNET.LOCK
26706	697450194	1	HINGE ASS.+ACCESS.
27882	813050082	1	WATER VALVE
30470	806890318	1	HEATING ELEMENT
35985	754130903	1	TANK COVER GASKET
36142	768411874	1	MOUNT MONODOSE ELECTRONIC BOARD
36201	977870006	1	TEMPERATURE FEELER
36635	768910025	1	HOPPER
36636	693050108	1	WATERVALVE
36637	754130920	1	VALVES GASKET
37841	681330613	2	DOOR HINGE
38564	12810441	2	MOTOR SPACER
38565	899371339	2	MOTOR FIXING SCREW
38567	698290393	1	FIXING BRACKET
40189	16930520	1	BACK PANEL
40432	813410286	1	ANTI-NOISE FILTER
40823	876370037	1	PULLEY
41955	762171564	1	HOPPER LONG COVER
43356	691290464	1	CLAMP + CABLE
43368	758971929	1	PIPE L=250 WTI910/1
43679	766330678	1	PROTECTION ELECTRONICS MODULE
46252	715040059	1	
46780	762171695	1	COVER DETERGENT COMPARTMENT BWM20
47885	795210381	1	MOTOR
47887	689170299	1	TANK
47888	971970099	1	COUNTERWEIGHT
47896	817870012	1	PROBE NTC DRYER 2000
47903	875220100	1	HUB 1600 DRYER
47988	818731074	1	DUCT SAFETY THERMOSTAT
47989	806890462	1	HEATING ELEM. DRYER 2000
48099	893210314	1	CLAMP 40X91 DRYER 2000
48100	754890850	1	NEW-DRYER SUCTION SLEEVE
48101	893210315	1	CLAMP 155 DRYER 2000
48102	57530794	1	LOWER SHELL DRYER 2000
48103	58290488	1	BACK BRACKET DRYER 2000
48104	57530795	1	UPPER SHELL DRYER 2000
48105	754131107	1	SAFETY-THERMOSTAT GASKET
48106	892810516	2	HEATING ELEMENT SPACER
48107	754131108	1	DRYER 2000 GASKET LNG.761
48108	754131109	1	DRYER 2000 GASKET LNG.43
48109	811770299	1	CAPACITOR 1 MF.MOT.
48116	764890852	1	SLEEVE CONDENSATION DRAIN NEW-DRYER
48120	764250027	1	INTAKE FRONT DRYER 2000



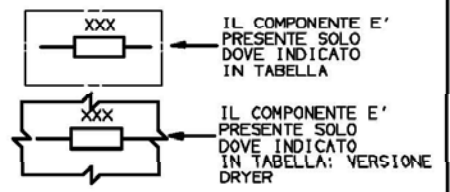
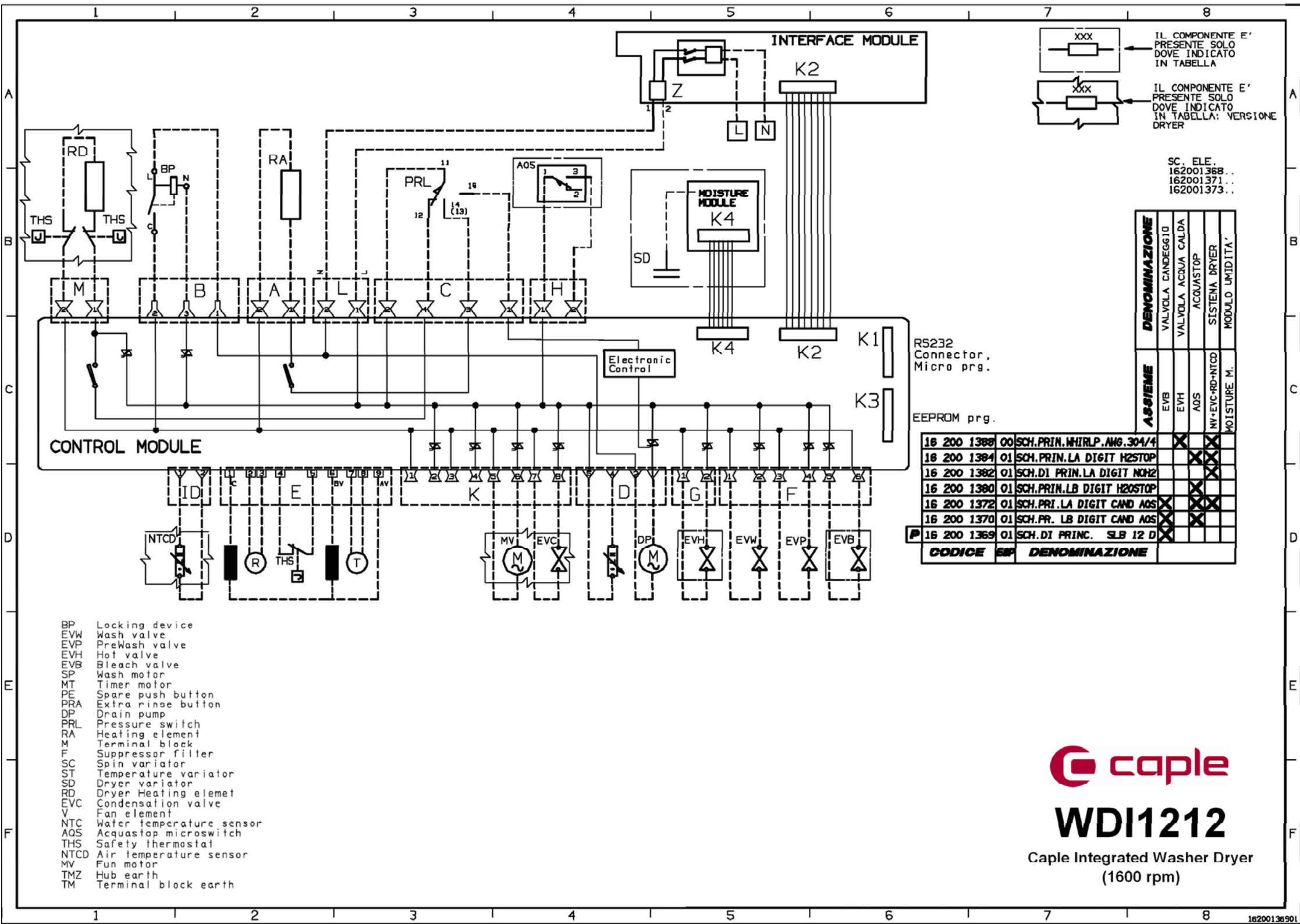
WDI1212 Caple Integrated Washer Dryer 1600rpm

Sort	Code	Qu	Desc
1	691913525	1	COPIA CARBONCINI CESET
48121	757850010	1	FRONT BELLOWS
48122	893210316	2	CLAMP 32X136 DRYER 2000
48124	893210317	1	CLAMP 42X136 DRYER 2000
48148	899371494	1	SCREW SELF-STARTING 7P X 32 CHEESE HEAD ZN
48150	899371495	2	SCREW M4X36TC/IC
48151	785410772	1	DUCT INSULATING BOARD
48152	899371496	4	SCREW TC ZN 4.2X18 SP
48153	899371497	12	SCREW M5X18TC-IC ZN
48154	895730457	5	DOUBLE PLATE
48155	754131110	1	SEAL GASKET
50412	899371522	3	SCREW 6M X 20 TCS STAINLESS
52287	914772269	1	BOOKLET INSTRUCTION PANEL INSTALLATION
54369	758972568	1	WATER INLET H.COLD L1500
56006	769450456	1	FRONT PLINTH
56067	758972632	1	CONDENS.CHARGE HOSE DRYE
56076	758972633	1	CONDENSAT.DRAIN HOSE
56268	758972637	1	INLET HOSE HOT WATER L1,5
58097	758972670	1	HOSE DRAIN
58098	792970179	1	PUMP DRAIN
58102	18935479	1	CROSS-PIECE FRONT UPPER 2003
58128	766411749	1	BUTTON BUTTON STRIP
58172	766411750	1	PULSANTE APERTURA OBLO BI
58209	682171976	1	COVER TANK LB 2003
58211	754890868	1	DUCT EXHAUST WATER
58213	758972671	1	HOSE DRAIN
58215	758972672	1	TUBE INTAKE TANK
58387	814490538	1	SERR/BLOC.MECC.SERIE DA
58388	890212287	1	CAVO RINVIO BLOCCO P.
58389	766411751	1	PULSANTE CON ATT.A CROCE
58390	764170338	2	GUIDA X CAVO METALL.MICRO
58392	18290645	1	BRACKET BUTTON DOOR
58394	816210339	1	PRESS.1LIV+ANTIT(50-22)B1
58538	754890869	1	TUBO SCARICO COPRECI 02 A
58728	768412873	1	MOUNT PROTECTION BOARD
58801	68290661	1	BRACKET SWITCH SUPPORT
58809	63252572	1	FACIA MOUNT TANK
58813	18412876	1	BRACKET MOUNT MOTOR PULLEY
58814	893210346	1	FASC.MOLLA FIS.SOFFIE-INV
58973	878412880	1	GR.MONT.CESTO LB 5/10
58998	751610070	1	BELT DRIVE
59200	691330952	1	ASSEMBLY HINGE PORTHOLE
59244	12172008	1	PANEL COVER INTERNAL
59247	768412892	1	FINE CORSA DIFFUSORE INC.
59294	914772631	1	BOOKLET INSTRUCTION
59295	754131330	1	BELLOWS DOOR



WDI1212 Caple Integrated Washer Dryer 1600rpm

Sort	Code	Qu	Desc
1	691913525	1	COPIA CARBONCINI CESET
59295	757850014	1	SOFFIETTO OBLO DRYER M6
59296	689250077	1	ASSEMBLY FAN DRYER
59308	758972697	1	HOSE DRAIN
59345	970170031	2	DAMPER
59874	769350055	1	VISOR
59900	899371707	3	SCREW FIXING MOUNT BASKET
59907	696290799	1	SCHEDA INT.UT.DIG.LED ROS
59932	695260056	1	ASSEMBLY DOOR
59934	769210321	1	VASCHETTA DET.LAVATR.SIFN
59945	513130047	1	FACING SHORT
60333	768910035	1	DOOR DRAWER
60334	763737659	1	FRONT PANEL
60335	694975345	1	KNOB
60336	696290817	1	TIMER 166800006-167100026



SC. ELE.
162001368...
162001371...
162001373...

ASSIEME	DENOMINAZIONE			
	EVW	EVH	AQS	NP-EVC-RD-NTCD
VALVOLA CANDEGGIO				
VALVOLA ACQUA CALDA				
ACQUASTOP				
SISTEMA DRYER				
MODULO UMIDITA'				

RS232 Connector, Micro prg.
EEPROM prg.

CODICE	SP	DENOMINAZIONE
16 200 1388	00	SCH.PRIN.WHIRLP.AMG.304/4
16 200 1384	01	SCH.PRIN.LA DIGIT H2STOP
16 200 1382	01	SCH.DI PRIN.LA DIGIT NHZ
16 200 1380	01	SCH.PRIN.LB DIGIT H20STOP
16 200 1372	01	SCH.PRI.LA DIGIT CAND AQS
16 200 1370	01	SCH.PR. LB DIGIT CAND AQS
16 200 1369	01	SCH.DI PRINC. SLB 12 D

- BP Locking device
- EVW Wash valve
- EVP PreWash valve
- EVH Hot valve
- EVB Bleach valve
- SP Wash motor
- MT Timer motor
- PE Spare push button
- PRA Extra rinse button
- DP Drain pump
- PRL Pressure switch
- RA Heating element
- M Terminal block
- F Suppressor filter
- SC Spin variator
- ST Temperature variator
- SD Dryer variator
- RD Dryer Heating element
- EVC Condensation valve
- V Fan element
- NTC Water temperature sensor
- AQS Acquastop microswitch
- THS Safety thermostat
- NTCD Air temperature sensor
- MV Fun motor
- TMZ Hub earth
- TM Terminal block earth

caple

WDI1212

Caple Integrated Washer Dryer
(1600 rpm)

Program selection guide

Type of fabric of washing programs Always observe the fabric manufacturer's treatment symbols		Programs dial «A»	Temperature dial «B»	Max. recommended load in kg	Detergents		
					Prewashing detergent	Washing detergent	Additive (optional)
Energetic programs, for cotton, linen, or hemp fabrics	Exceptionally dirty laundry	1	90°	4	1	2	☉
	Very dirty resistant colours	1	60°	4	1	2	☉
	Very dirty delicate colours	1	60°	5	1	2	☉
	Normally dirty laundry	2	90°	5	—	2	☉
	Normally dirty resistant colours	3	60°	5	—	2	☉
	Normally dirty delicate colours	4	40°	5	—	2	☉
	Slightly soiled delicate colours	4	30°	4	—	2	☉
	Rinses	5	0°	5	—	—	—
	Rinses with fabric conditioner	5	0°	5	—	—	☉
	Fabric conditioner	6	0°	5	—	—	☉
Drain and spin	7	0°	5	—	—	—	
Delicate programs, for mixed or artificial synthetic fibres	Very dirty resistant synthetics (Nylon, Perlan, Terital-Cotton, Polyester-Cotton, etc.)	8	60°	2,5	1	2	☉
	Very dirty delicate synthetics (Terital, etc.)	8	40°	2,5	1	2	☉
	Normally dirty delicate synthetics (Nylon, Perlan, Terital-Cotton, Polyester-Cotton, etc.)	9	60°	2,5	—	2	☉
	Normally dirty synthetics (Terital, etc.)	9	40°	2,5	—	2	☉
	Washable clothes to freshen	9	30°	2,5	—	2	☉
	Curtains	9	30° 40°	*	—	2	☉
	Delicate rinses	10	0°	3	—	—	☉
	Fabric conditioner	11	0°	3	—	—	☉
Drain and short spin	S	0°	—	—	—	—	
Wool and silk	Wool and silk	12	30°	1	—	2	☉
	Fabric conditioner	13	0°	1	—	—	☉
	Drain and short spin	S	0°	—	—	—	—

NOTES: ○ = Button may be pressed

● = Button has to be pressed

Push-Buttons				Description of washing cycle
Additional rinse	Economy program	Half- load	Increase water	
<input type="radio"/>	—	<input type="radio"/>	<input type="radio"/>	Prewash at 35°C, wash at 90°C, rinses and adjustable final spin on desired speed
<input type="radio"/>	—	<input type="radio"/>	<input type="radio"/>	Prewash at 35°C, wash at 60°C, rinses and adjustable final spin on desired speed
<input type="radio"/>	●	<input type="radio"/>	<input type="radio"/>	Economy wash at 60°C, rinses and adjustable final spin on desired position
<input type="radio"/>	—	<input type="radio"/>	<input type="radio"/>	Wash at 90°C, rinses and adjustable final spin on desired speed
<input type="radio"/>	●	<input type="radio"/>	<input type="radio"/>	Economy wash at 60°C, rinses and adjustable final spin on desired position
<input type="radio"/>	●	<input type="radio"/>	<input type="radio"/>	Economy wash at 40°C, rinses and adjustable final spin on desired position
<input type="radio"/>	—	<input type="radio"/>	<input type="radio"/>	Wash at 30°C, rinses and adjustable final spin on desired position
<input type="radio"/>	—	<input type="radio"/>	<input type="radio"/>	3 or 4 rinses (if the additional rinse button is pressed) and adjustable final spin on desired position
<input type="radio"/>	—	<input type="radio"/>	<input type="radio"/>	3 or 4 rinses (if the additional rinse button is pressed) with fabric conditioner and adjustable final spin on desired position
<input type="radio"/>	—	<input type="radio"/>	<input type="radio"/>	1 rinse with fabric conditioner and adjustable final spin on desired position
<input type="radio"/>	—	<input type="radio"/>	—	Only drain, or drain and adjustable final spin on desired position
—	—	—	<input type="radio"/>	Prewash at 35°C, wash at 60°C, rinses, stop with full tub, or only drain, or drain and spin from 500 to 900 rpm
—	—	—	<input type="radio"/>	Prewash at 35°C, wash at 40°C, rinses, stop with full tub, or only drain, or drain and spin from 500 to 900 rpm
—	—	—	<input type="radio"/>	Wash at 60°C, rinses, stop with full tub, or only drain, or drain and spin from 500 to 900 rpm
—	—	—	<input type="radio"/>	Wash at 40°C, rinses, stop with full tub, or only drain, or drain and spin from 500 to 900 rpm
—	—	—	<input type="radio"/>	Wash at 30°C, rinses, stop with full tub, or only drain, or drain and spin from 500 to 900 rpm
—	—	—	<input type="radio"/>	Wash at 30° or 40°C, rinses, stop with full tub, or only drain, or drain and spin from 500 to 900 rpm
—	—	—	<input type="radio"/>	3 rinses with fabric conditioner, stop with full tub, or only drain, or drain and spin from 500 to 900 rpm
—	—	—	<input type="radio"/>	1 rinse with fabric conditioner, stop with full tub, or only drain, or drain and spin from 500 to 900 rpm
—	—	—	—	Drain and spin from 500 to 900 rpm
—	—	—	<input type="radio"/>	Wash at 30°C, stop with full tub, or only drain, or drain and adjustable spin from 500 to 1000 rpm
—	—	—	<input type="radio"/>	1 rinse with fabric conditioner, stop with full tub, or only drain, or drain and adjustable spin from 500 to 1000 rpm
—	—	—	—	Only drain, or drain and adjustable spin from 500 to 1000 rpm

* = fill basket 1/3 without pressing