



DI452

**Caple Fully Integrated
45cm Dishwasher**



TECHNICAL INFORMATION



Di452 Dishwasher

45 cm

Fully integrated

Energy Performance "B"

Wash Class "A"

Drying Performance "B"

Noise level "54 db"

5 wash programmes

4 temperatures (45-55-65-70°C)

GENERAL FEATURES

9 place settings

Two Spray Arms

Electronic timer with LED display

On/off Pilot Light & End of cycle audible alarm

Height adjustable upper basket

Salt & Rinse Aid indicators

Stainless Steel filter

Residual Heat Drying

Water softener

Aquastop overflow protection system

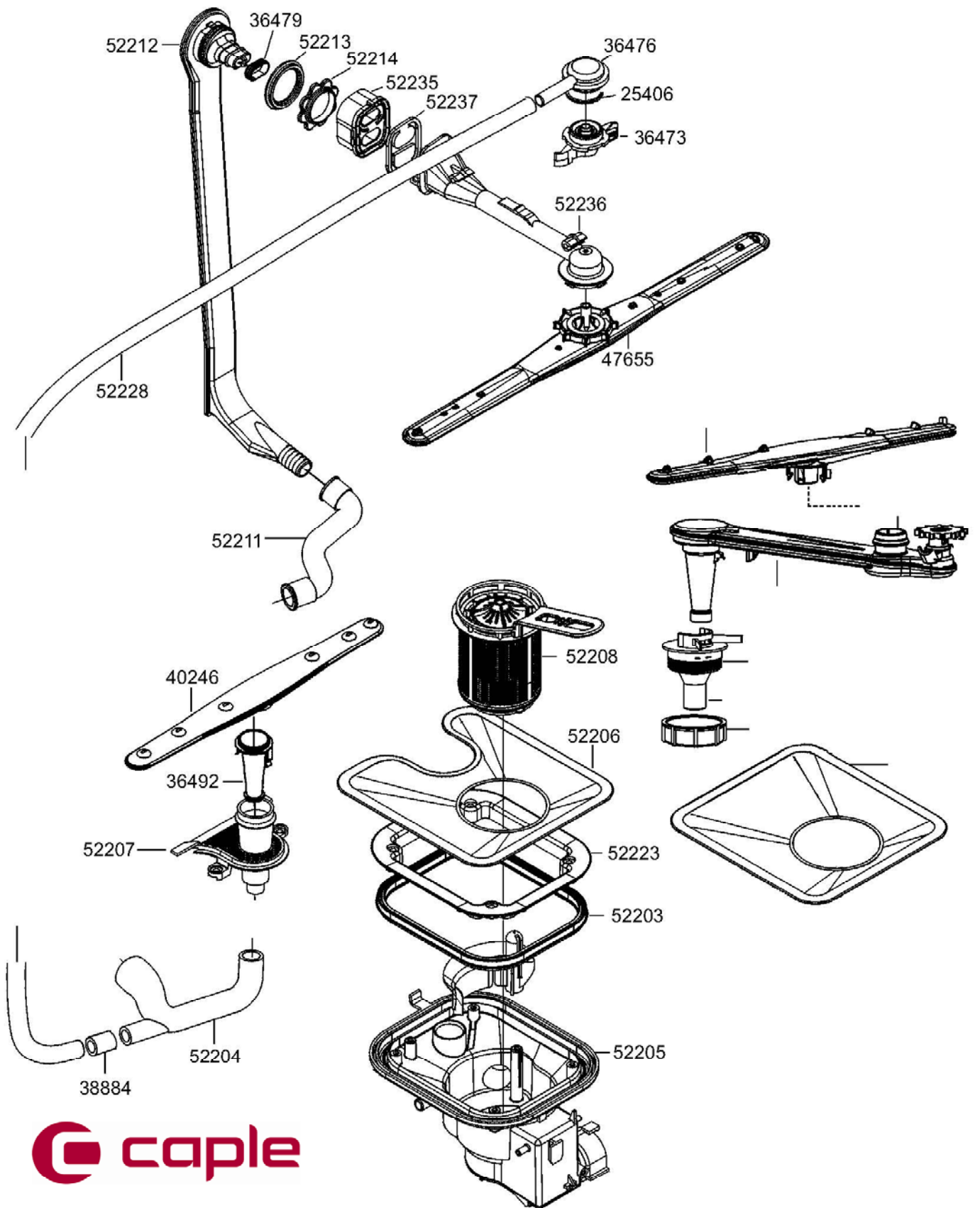
***Hot & Cold water connection (*will accept hot water up to 60 deg centigrade)**

14 litres per cycle

Wash/Dry cycle time 125 mins on normal programme

Fully integrated behind a 445mm x 715mm furniture door.

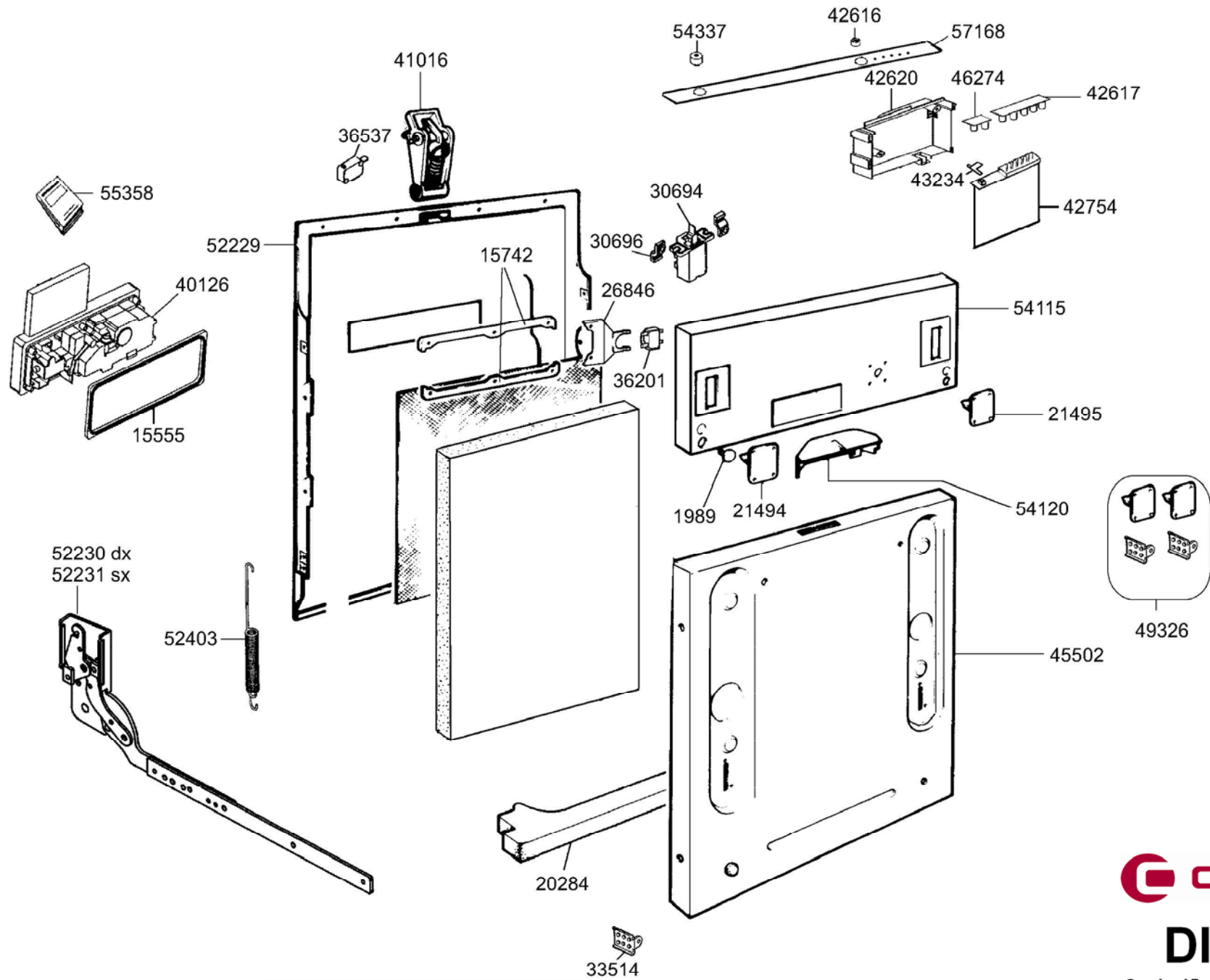




caple

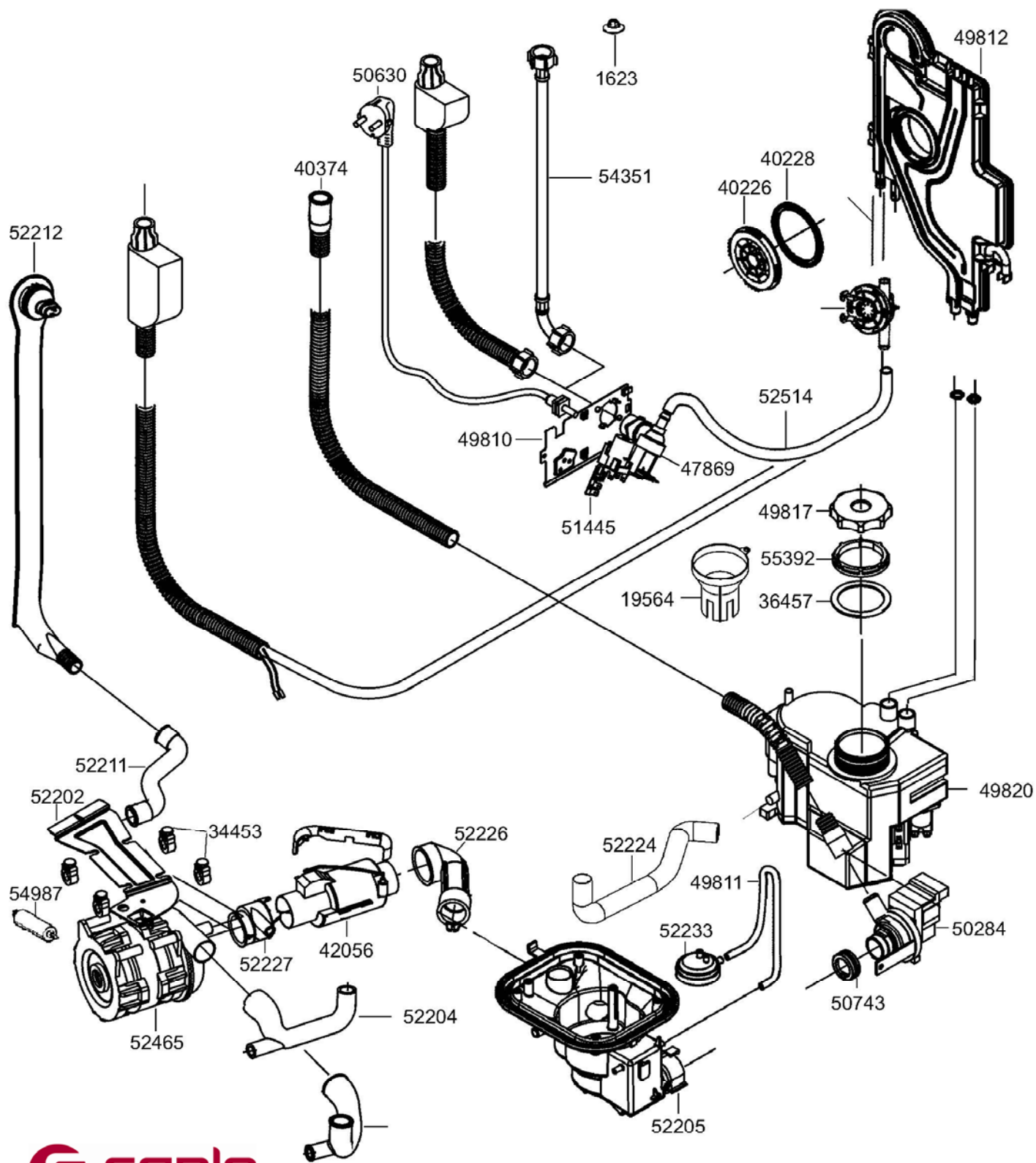
DI452

Caple 45cm Dishwasher
Fully Integrated



DI452

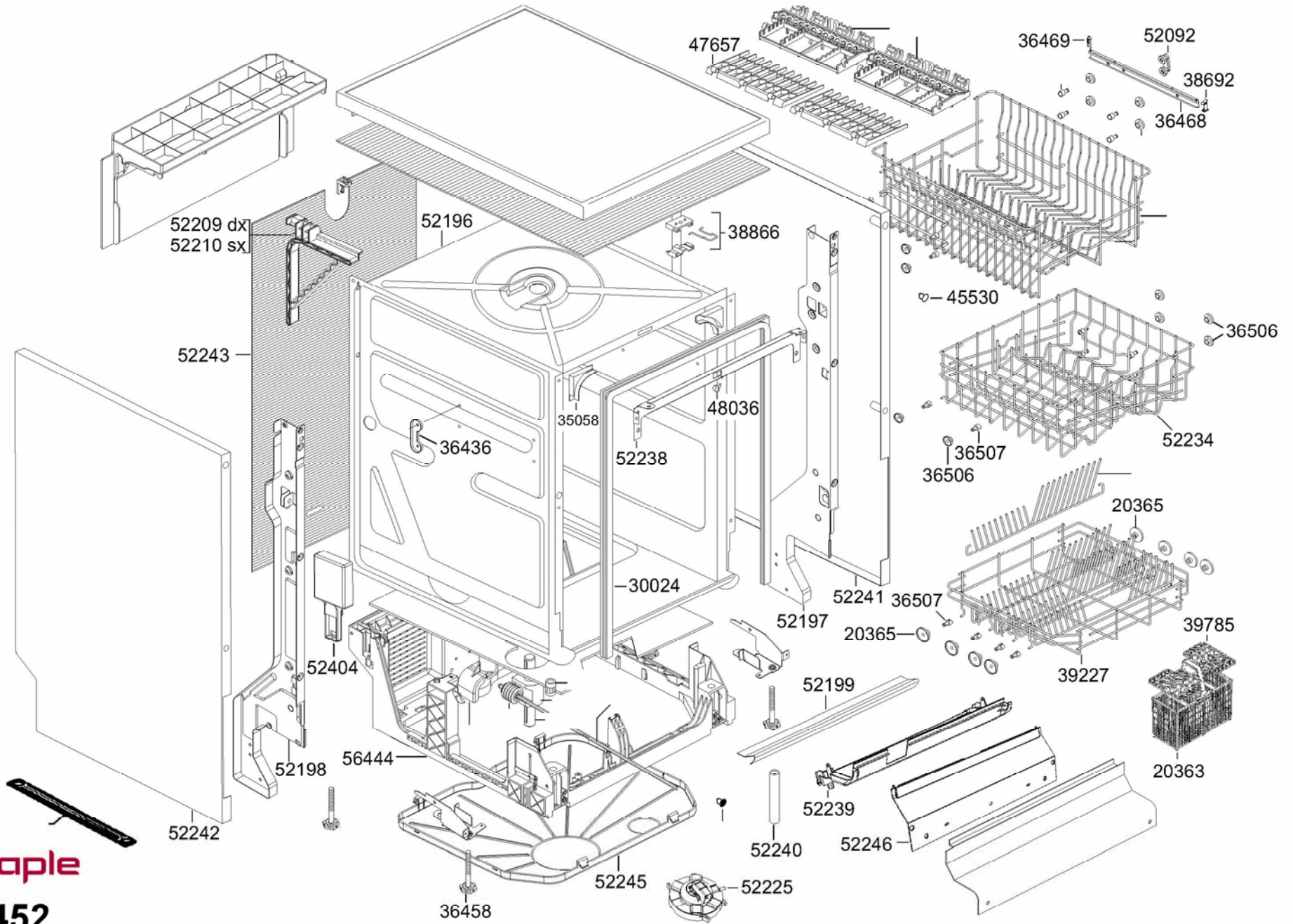
Caple 45cm Dishwasher
Fully Integrated



caple

DI452

Caple 45cm Dishwasher
Fully Integrated



DI452

Caple 45cm Dishwasher
Fully Integrated



DI452 Caple Fully Integrated 45cm Dishwasher

Sort	Code	Qu	Desc
1623	973410008	1	FILTER
1989	754010016	2	PAD STORAGE COMPARTMENT DOOR W105
15555	754130436	1	GASKET RECTANGULAR DISPENSER
15742	188290131	2	BRACKET DETERGENT DISPENSER MOUNT
19564	764250013	1	FUNNEL SALTS PL 45
20284	786330348	1	PROTECTION CONDENSATION 45
20363	691410232	1	BASKET CUTLERY BI 45
20365	767410072	8	WHEEL LOWER BASKET 45
21494	15730265	1	PLATE FRONT PANEL, LH ST45
21495	15730266	1	PLATE FRONT PANEL, RH ST45
25406	754130677	1	GASKET UPPER NOZZLE LS955
26846	978411492	1	MOUNT THERMOSTAT KSA740
30024	754130793	1	GASKET TANK GCI4733W-BR
30694	816450119	1	BUTTON STRIP ON/OFF ST770
30696	768411631	2	BRACKET BUTTON STRIP ST770
33514	683850125	2	RETAINER LOWER INTEGRATED PANEL SLOT
34453	754010096	4	PAD MOTOR "SOLE"
35058	760250180	2	ANGLE BAR DOOR GASKET AR
36201	977870006	1	TEMPERATURE FEELER
36436	897010224	2	REINFORCEMENT GUIDE WHEELS MOUNT PL965
36457	754130914	1	GASKET SOFTENER RING-NUT LS97
36458	975770160	4	FEET ADJUSTABLE LS97
36468	64170237	2	GUIDES UPPER BASKET LS97
36469	765550353	2	PIN BASKET RETAINER LS97
36473	694570041	1	ASSEMBLY SPRAY ARM TOP WASHING LS97
36476	761810102	1	DUCT TOP SPRAY ARM LS97
36479	754130918	1	GASKET DRUM DUCT LS97
36492	768971537	1	PIPE VENTURI LOWER SPRAY ARM LS97
36506	767410104	8	WHEEL UPPER BASKET, LH LS97
36507	760570172	16	BUSHING BASKET WHEEL LS97
36537	814490321	1	MICROSWITCH SNAP LOCK ST973
38692	768610292	2	TERMINAL BASKET GUIDE 45-97
38866	763450181	1	RETAINER HOOK, UPPER LS45'98
38884	758971681	1	TUBE CONNECTION LS45'98
39227	691410360	1	ASSEMBLY BASKET LOWER BASIC GSI541E
39785	764410185	2	INSERT CUTLERY BASKET LS45'98
40126	812890059	1	DISPENSER DETERGENT ADG954/2
40226	763890421	1	RING-NUT FILLING SYSTEM 18L 97
40228	754130980	1	GASKET AIR-BREAK RING-NUT SHELL 97
40246	64570045	1	SPRAY ARM LOWER 45 FD45
40374	758971783	1	PIPE DRAIN D.29 DWF62WH
41016	697690192	1	ASSEMBLY +MICRO45 S
41016	697690151	1	ASSEMBLY LOCK + MICROSWITCH KSV550



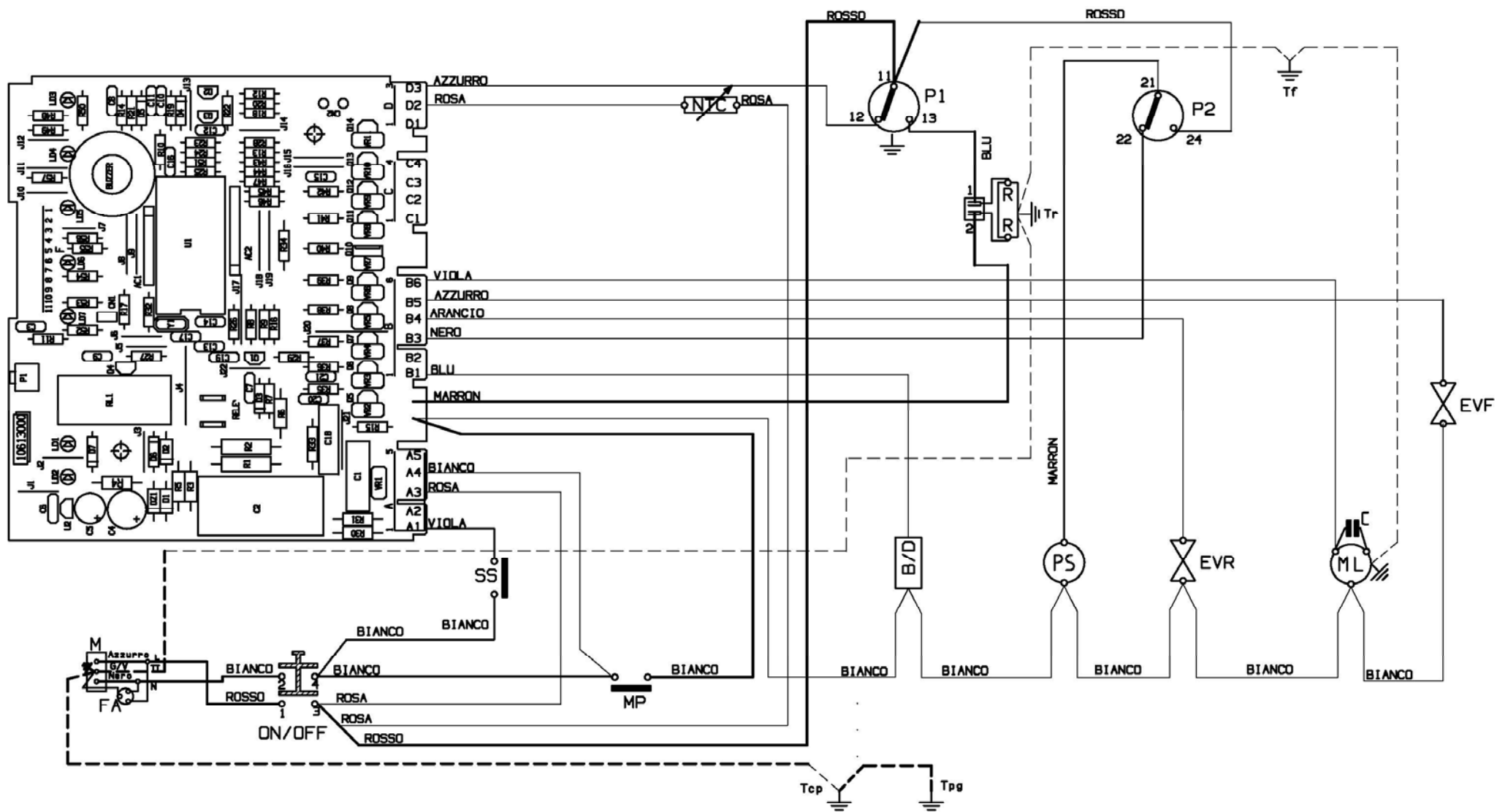
DI452 Caple Fully Integrated 45cm Dishwasher

Sort	Code	Qu	Desc
42056	806890403	1	ELEMENT BLECKMANN 240V
42616	756410561	1	BUTTON ELECTRONIC TIMER ZIS605
42617	762831009	1	DIFFUSER LAMP ZIS605
42620	767530707	1	SHELL TIMER PROTECTION ZIS605
42754	696290673	1	ASSEMBLY TIMER ELECTRONIC ST945E
43234	764730135	1	SIMMER CONTROL BUTTON STRIP ADP8112
45502	66133321	1	DOOR FOR FULLY INTEGRATED DISHWASHER
45530	768450338	4	CAP GREY
46274	763450216	1	RETAINER LED FRONT PANEL ADP8132
47655	694570056	1	ASSEMBLY SPRAY ARM UPPER WHITE ZIS1450
47657	834090965	2	FLAP (X0419)ZIS1450
47869	813050133	1	SOLENOID VALVE LV2405
48036	768450362	2	CENTERER DOOR, GREY
48036	768452094	2	CENTRATORE PORTA LS45 INT
48036	768452095	2	TAPPO CENTRATORE PORTA
49326	977450303	1	ASSEMBLY PANEL FASTENERS
49810	18290504	1	BRACKET SOLENOID VALVE MOUNT
49811	758972238	1	TUBE WASH PRESSURE SWITCH 45 97
49812	766610137	1	AIR BREAK 2001 STD
49817	768450382	1	CAP SALT 2001 WHITE
49820	692650064	1	GRUPPO SOFTENER 22LT.W.REED + SALT REGULATION
50284	792970164	1	PUMP DRAIN GS65-2VI
50630	821290548	1	CABLE + CLAMP GB1,5MT 1MM
50743	754131148	1	GASKET DRAIN PUMP PIT
51445	813410341	1	FILTER RFI PL984EB-2
52092	768412575	4	ASSEMBLY GUIDE WHEELS WHITE BI.LS97
52196	689170327	1	ASS. TANK + TOP SPRAY ARM + EXTERNAL ELEMENT
52197	688590624	1	FRAME RH 45-2001
52197	688590773	1	TELAIO DX 45-2001 NEW
52198	688590625	1	FRAME LH 45-2001
52198	688590774	1	TELAIO SX 45-2001 NEW
52199	754131167	1	GASKET SELF-CLEANING TANK 45-2001
52202	18290554	1	BRACKET MOTOR SUPPORT 45-2001
52203	754131168	1	GASKET PIT 45-2001
52204	758972414	1	PIPE LOWER + TOP DELIVERY PUMP
52205	690370343	1	ASSEMBLY PIT 45-2001 NON-AQUASTOP
52206	63410344	1	FILTER STAINLESS LS 45-2001
52207	768412580	1	MOUNT SPRAY ARM 45-2001 STD
52208	693410345	1	ASSEMBLY FILTER 45-2001
52209	768250701	1	BRACKET RH SIDE PANEL FIXING 45-01
52210	768250702	1	BRACKET LH SIDE PANEL FIXING 45-01
52211	758972415	1	PIPE UPPER DELIVERY PUMP 2001
52212	758972416	1	PIPE INTAKE UPPER SPRAY ARM 45-01



DI452 Caple Fully Integrated 45cm Dishwasher

Sort	Code	Qu	Desc
52213	754131169	1	GASKET UPPER SPRAY ARM PIPE 2001
52214	763890460	1	RING-NUT CONDENSER FIXING 45-2001
52223	763490074	1	FLANGE PIT 45-2001
52224	758972417	1	PIPE SOFTENER PIT 45 2001
52225	694490492	1	ASSEMBLY SAFETY + FLOAT 45 LIV 117 TP
52225	783830009	1	ASSEMBLY SAFETY
52226	758972418	1	PIPE INTAKE PIT - EXTERNAL ELEMENT 45-01
52227	758972419	1	PIPE INTAKE PUMP ELEMENT 45/01X
52228	758972420	1	PIPE INTAKE TOP SPRAY ARM L.940
52229	62050743	1	DOOR LINER 45 FRONT PANEL FIXING
52229	692050707	1	ASSEMBLY DOOR LINER ST45-01STD
52230	691330859	1	ASSEMBLY RH DOOR HINGE 45 2PATT
52231	691330860	1	ASSEMBLY LEFT DOOR HINGE 45 2PATT
52233	816210328	1	PRESSURE SWITCH 45 2001 STD 75/58
52234	691410463	1	ASSEMBLY UPPER BASKET 45 WHITE 9C STD
52235	761810177	1	SECTION DUCT 45-01 BI 10 UNI
52236	761810178	1	DUCT BASKET 45-01 WHITE UNI
52237	759130473	1	DOUBLE VALVE 45-01 UNI
52238	14852010	1	MASK TANK RIM 45 FLUSH MOUNT ZINC-PLATED
52239	766330831	1	PROTECTION WIRING HARNESS 45-2001
52240	758972421	1	PIPE OVERFLOW DRAIN 45-01
52241	13330894	1	SIDE PANEL BUILT-IN 45 RH 6/10 ZINC-PLATED
52242	13330895	1	SIDE PANEL BUILT-IN 45 LH 6/10 ZINC-PLATED
52243	766930600	1	COVER INTERNAL 45-01 CANETTATO
52245	760370344	1	TRAY 45-2001 NO HOLES
52246	769450403	1	PLINTH INTEGRATED 45-2001
52403	895092563	2	SPRING INTERNAL DOOR 45-2001
52404	768250707	2	BLOCK TANK 45-01 NON-SLIP
52465	695210420	1	ASSEMBLY PUMP WASHING 240/50'45-01G
52465	695210502	1	MOTOR
52514	758972427	1	PIPE SOLENOID VALVE AIR-BREAK 45-01
54115	763736907	1	FRONT PANEL ST 45 ELECTRONIC TIMER 011439
54120	766330868	1	PROTECTION HANDLE ST60/45 011439
54337	766411676	1	BUTTON PRINTED TEKA 011439
54351	758972567	1	HOSE HOT WATER INTAKE L 1500
54987	811770337	1	CONDENSER 6MF100C
55358	914772405	1	BOOKLET IST ST45 NEUT 9C
55392	763890466	1	RING-NUT DESCALER LS45'01 WHITE
56444	760410089	1	ASSEMBLY BASE 45-01 INC 4 FOOT
57168	763252504	1	FACIA FRONT PANEL



MP = Microporta
 FA = Filtro antidisturbo
 TS = Termostato di sicurezza
 P1 = Pressostato di livello
 P2 = Pressostato di sicurezza
 AQS = Dispositivo acquastop
 SS = sensore sale
 SB = Sensore brillantante
 NTC = Sensore temperatura
 RR = Resistenza riscaldamento
 B/D = Dosatore brillantante / detersivo
 EVR = Elettrovalvola di rigenerazione
 FLMT = flow-meter (turbina)

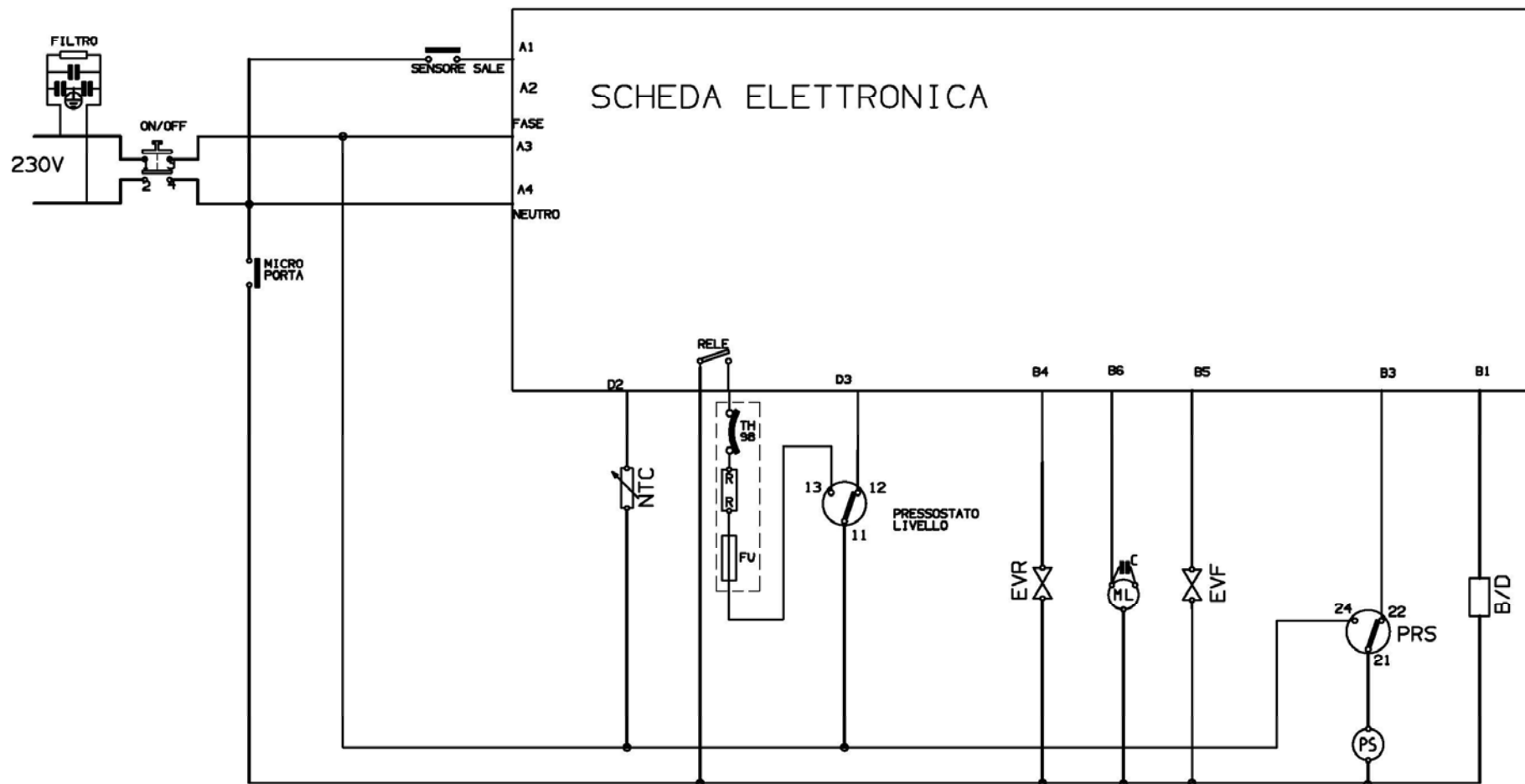
——— ■ 1mm
 ——— ■ 0.75mm
 ——— ■ 0.5mm

EVF = Elettrovalvola di carico
 ML = Motore lavaggio
 PS = Pompa scarico
 M = Morsettiera

caple

DI452

Caple 45cm Dishwasher
Fully Integrated



MP = Microporta
 FA = Filtro antidisturbo
 TS = Termostato di sicurezza
 PI = Pressostato di livello
 PRS= Pressostato di sicurezza
 AQS = Dispositivo acquastop
 SS = sensore sale
 SB = Sensore brillantante
 NTC = Sensore temperatura
 RR = Resistenza riscaldamento
 B/D = Dosatore brillantante / detersivo
 EVR = Elettrovalvola di rigenerazione
 FLMT= Flow-meter

EVM = Bobina 1/2 carico
 EVF = Elettrovalvola di carico
 ML = Motore lavaggio
 PS = Pompa scarico

SC.ELE.
162001225..

caple

DI452

Caple 45cm Dishwasher
Fully Integrated