



WI6221

Caple Wine Cellar



Technical information



Product Specification

Wi6221 Wine Cabinet

NEW Autumn 2006

Features

Slot-in

- Two separate side-by-side temperature zones for red or white wine
- 5 sliding shelves and 1 base shelf per zone
- Stainless steel door frame, handle and plinth
- Stainless steel fronted beech shelves
- Toughened UV protected glass door
- Black cabinet interior and exterior
- Electronic temperature control and LCD
- No frost cooling system
- Compressor cooling system
- Fan circulated cool air for even temperature distribution
- 2 heaters raise internal temperature when external temperature drops
- Air ventilation through stainless steel plinth for building in
- Quiet operation 42dB
- 2 humidor reservoirs
- White LED Interior lighting with switches

Performance

- Both zones temperature range 5°C - 18°C
- Ambient temperature 5°C - 35°C
- Humidity range >65%RH

Capacity

- Max. 38 wine bottles 750ml
- (19 bottles per zone, 3 bottles per sliding shelf, 4 bottles per base shelf)

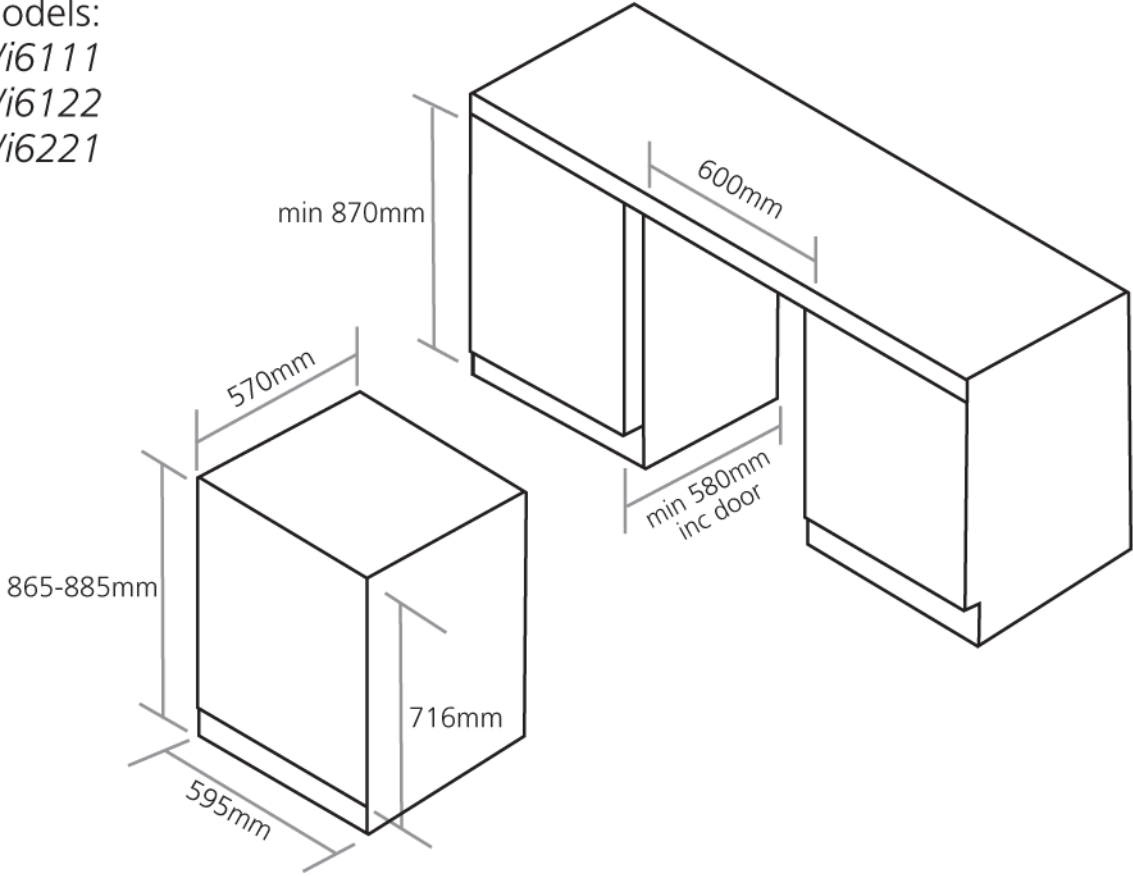
Electrical Connection

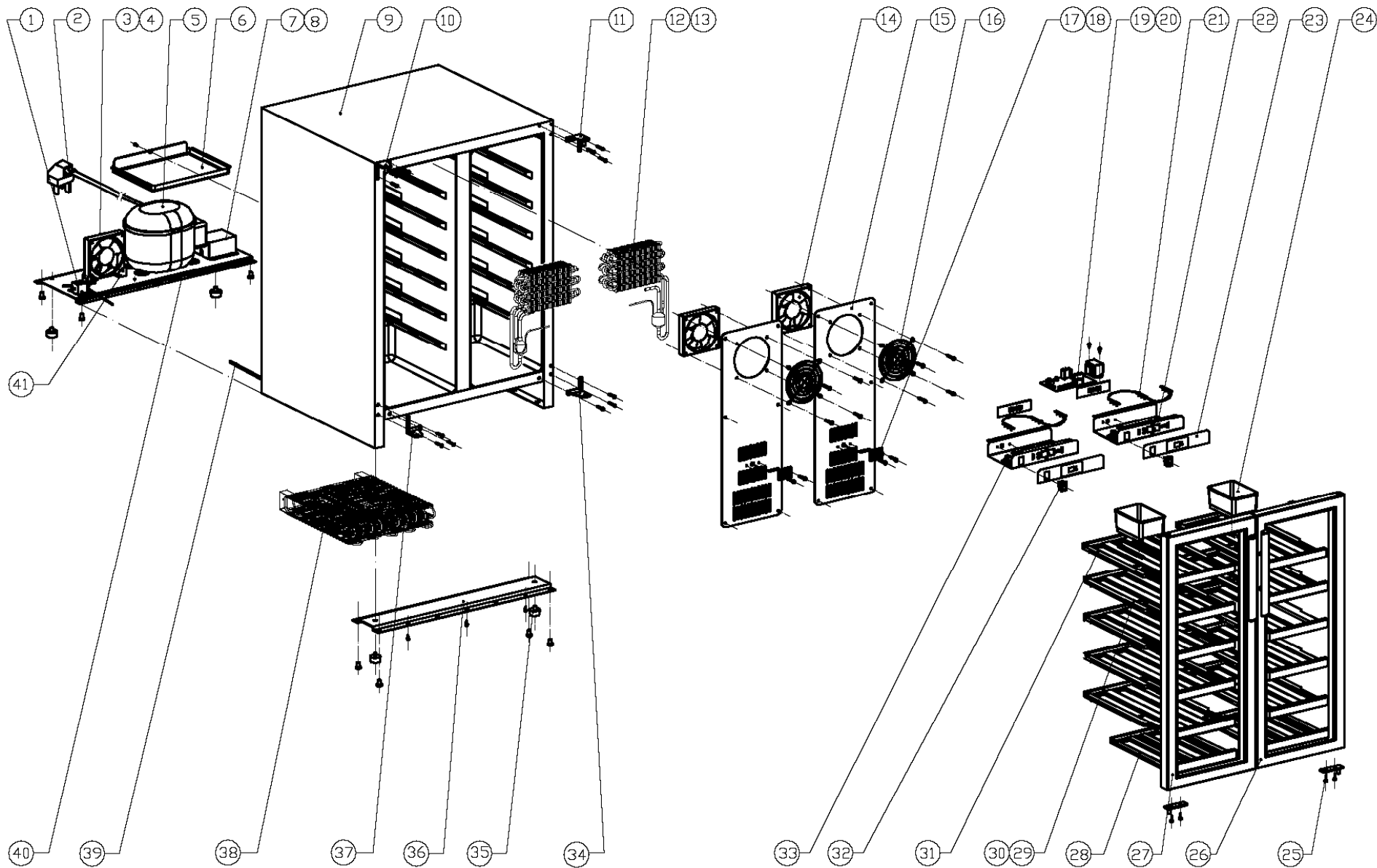
- Voltage 230V
- Rated load 0.16kW
- Fuse rating 13A

Dimensions

- W 595mm, D 570mm, H 865 - 885mm

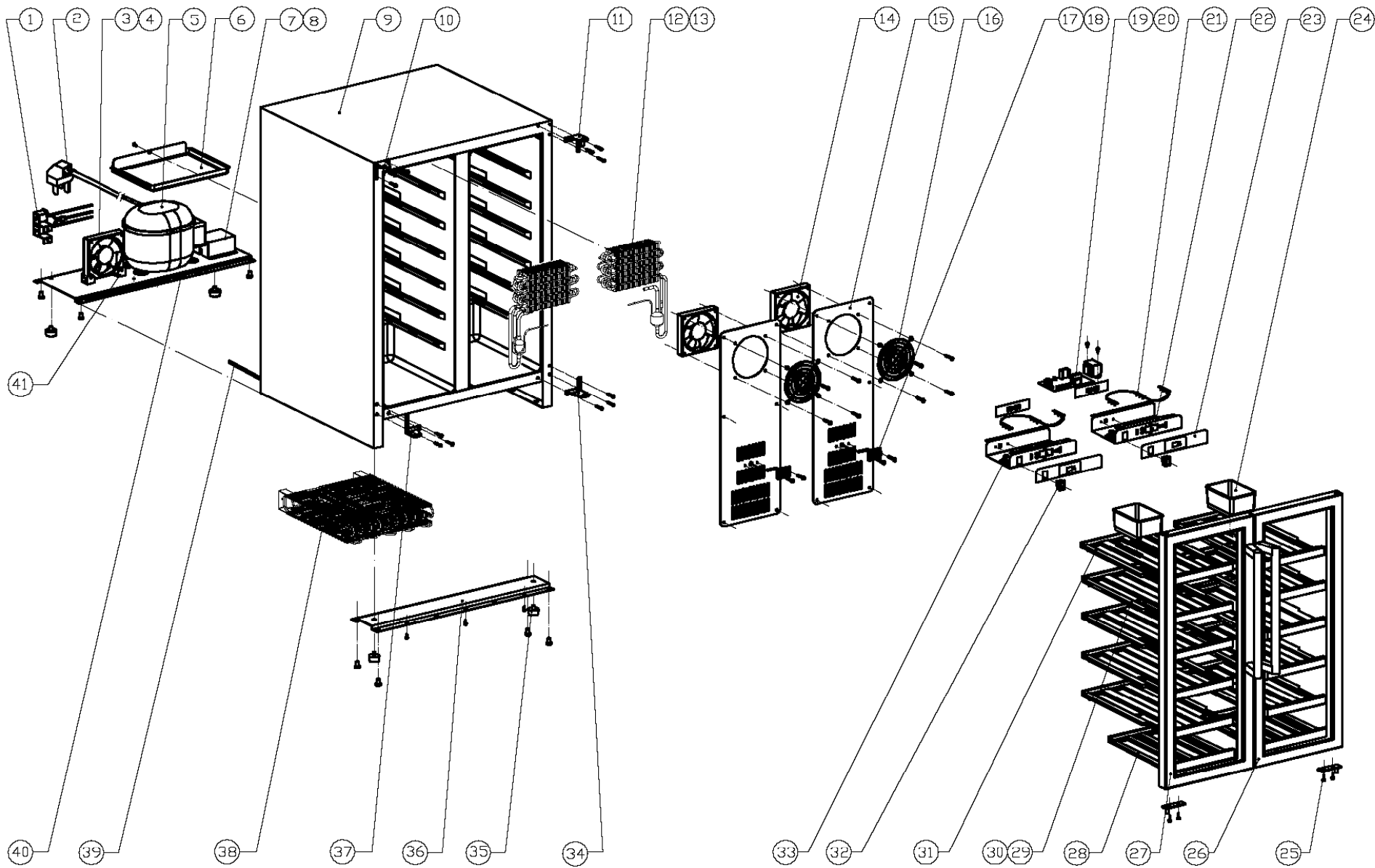
Models:
Wi6111
Wi6122
Wi6221





WI6221

Caple Wine Cellar (Revision A)



WI6221

Caple Wine Cellar (Revision B)

JG50-2DA	WI6221
新顺翔型号	客户型号(香港顺翔)

8 | 1 | 7 | 6 | 5 | 4 | 4 | 3 | 3 | 2 | 1



WI6221 - Caple Wine Cellar (Revision A)

Item	Part Code	Description	Qty
1	DG12-37.1	Refrigerant valve	1
2	DG2-3	Power cord	1
3	DG7-1.2	Condenser fan	1
4	DG19-3	Fan cover	1
5	DG1-16	Compressor	1
6	DG22-176	Water tank	1
7	DG13-2	Electrical box cover	1
8	DG11-2	Junction block	1
9	DG22-171	Cabinet	1
10	DG14-15.2-L	Top hinge module (Left)	1
11	DG14-15.2-R	Top hinge module (Right)	1
12	DG12-16	Evaporator	2
13	DG11-3.1	Heater	2
14	DG7-3	Evaporator fan	2
15	DG22-209	Air duct board	2
16	DG19-1	Fan cover	2
17	DG13-511	Senser cover	2
18	DG8-10	Senser	2
19	DG3-27	PCB board	1
20	DG6-7	Transformer	1
21	DG3-12-W	LED Light	2
22	DG22-33.2	Electrical box	2
23	DG20-12	Display panel	2
24	DG13-1.2	Humid box	2
25	DG14-19	Door axis	2
26	DG23-39-R	Door (Right)	1
27	DG23-39-L	Door (Left)	1
28	DG15-27	Wooden shelves C1	2
29	DG15-26	Wooden shelves A9	8
30	DG15-25	Stainkese steel edge, wooden shelves	10
31	DG15-26.1	Wooden shelves A9A	2
32	DG9-3	Switch	2
33	DG13-127	LED Lamp holder	6
34	DG14-31.1-R	Lower hinge module (Right)	1
35	DG13-6.11	Cabinet leg	4
36	DG22-88	Support bracket of front legs	1
37	DG14-31.1-L	Lower hinge module (Left)	1
38	DG12-17	Condenser	1
39	DG12-6.1	Air-circulating pipe	2
40	DG22-80.2	Compressor bracket	1



WI6221 - Caple Wine Cellar (Revision A)

Item	Part Code	Description	Qty
41	DG14-56	Fan frame (pair)	1



WI6221 - Caple Wine Cellar (Revision B)

Item	Part Code	Description	Qty
1	DG12-37.1	Refrigerant valve	1
2	DG2-3	Power cord	1
3	DG7-1.2	Condenser fan	1
4	DG19-3	Fan cover	1
5	DG1-16	Compressor	1
6	DG22-176	Water tank	1
7	DG13-2	Electrical box cover	1
8	DG11-2	Junction block	1
9	DG22-171	Cabinet	1
10	DG14-15.2-L	Top hinge module (Left)	1
11	DG14-15.2-R	Top hinge module (Right)	1
12	DG12-16	Evaporator	2
13	DG11-3.1	Heater	2
14	DG7-3	Evaporator fan	2
15	DG22-209	Air duct board	2
16	DG19-1	Fan cover	2
17	DG13-511	Senser cover	2
18	DG8-10	Senser	2
19	DG3-27	PCB board	1
20	DG6-7	Transformer	1
21	DG3-12-W	LED Light	2
22	DG22-33.2	Electrical box	2
23	DG20-12	Display panel	2
24	DG13-1.2	Humid box	2
25	DG14-45	Door axis	2
26	DG23-39-R	Door (Right)	1
27	DG23-39-L	Door (Left)	1
28	DG15-27	Wooden shelves C1	2
29	DG15-26	Wooden shelves A9	8
30	DG15-25	Stainless steel edge, wooden shelves	10
31	DG15-26.1	Wooden shelves A9A	2
32	DG9-3	Switch	2
33	DG13-127	LED Lamp holder	6
34	DG14-31.1-R	Lower hinge module (Right)	1
35	DG13-6.11	Cabinet leg	4
36	DG22-88	Support bracket of front legs	1
37	DG14-31.1-L	Lower hinge module (Left)	1
38	DG12-15	Condenser	1
39	DG12-6.1	Air-circulating pipe	2
40	DG22-80.2	Compressor bracket	1



WI6221 - Caple Wine Cellar (Revision B)

Item	Part Code	Description	Qty
41	DG14-56	Bracket of fan (pair)	1