



WI6133GM

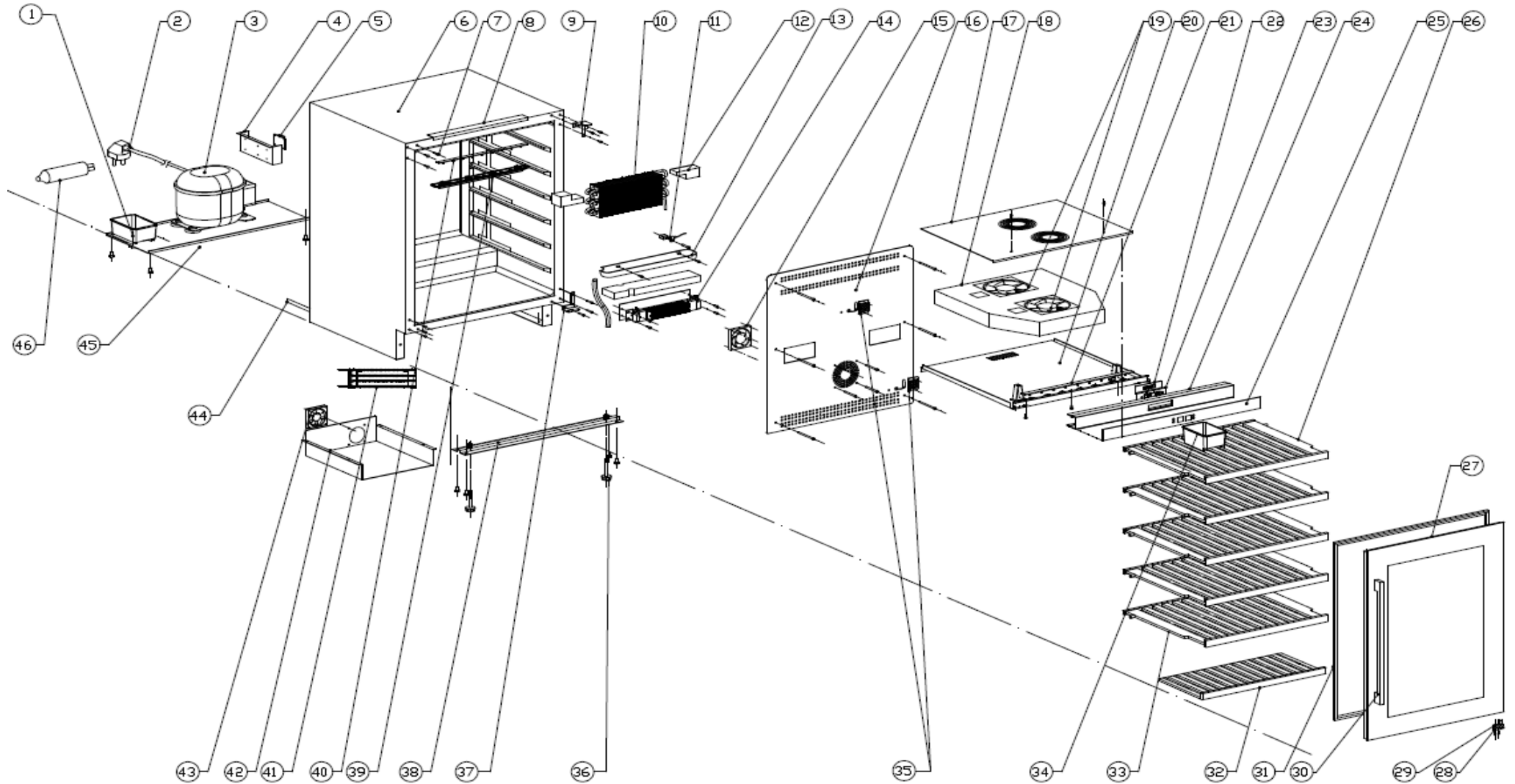
Caple 60cm 2 Zone Wine Cabinet Gun Metal



Technical Manual



WI6133GM – Caple 60cm 2 Zone Wine Cabinet Gun Metal





WI6133GM

Caple 60cm 2 Zone Wine Cabinet Gun Metal

Item	Part No.	Description	Quantity
1	DG13-1	Water box	1
2	DG2-14	Power cord	1
3	DG1-119	Compressor	1
4	DG13-272-1	Electrical box cover	1
5	DG3-312-3	PCB board	1
6	DG26-247	Cabinet	1
7	DG13-268	Decorative nail	6
8	DG13-3149	Fixing bracket A	1
9	DG14-190-SR	Top right hinge	1
10	DG12-50-1	Evaporator	1
11	DG13-7	Shelf support	1
	DG20-1	Clip	1
	DG8-8	Sensor	1
12	DG18-93	Foam	2
13	DG13-458	Water tank	1
14	DG11-18	PTC heater	1
15	DG7-41-BH	PTC heater fan	1
16	DG22-422-1	Air duct board A	1
17	DG22-421	Upper panel for middle airway-board	1
18	DG18-120	Foam	1
19	DG7-48	Evaporator fan	2
20	DG22-303-1	Lower panel for middle airway-board	1
21	DG3-18-W	LED light	1
22	DG13-3063	Display support	1
23	DG3-004-2	Display board	1
24	DG13-3233	Display board box	1
25	DG20-472	Control panel	1
26	DG15-303	Wooden shelf	2
27	DG23-402	Door	1
28	DG22-3057	Axis	1
29	DG13-3155	Door axis spacer	1
30	DG22-3490-B	Handle	1
31	M160-050	Gasket	1
32	DG15-304	Wooden shelf	1



WI6133GM

Caple 60cm 2 Zone Wine Cabinet Gun Metal

Item	Part No.	Description	Quantity
33	DG15-311	Wooden shelf	3
34	DG13-1.2	Humid box	1
35	DG13-198	Sensor cover	2
	DG8-8	Sensor	2
36	DG13-3146	Cabinet leg, type BC50N	4
37	DG14-212-SR	Lower right hinge	1
38	DG22-330	Support bracket of front legs	1
39	DG13-129	LED Light cover	1
40	DG3-14-W	LED light	1
41	DG12-91	Condenser	1
42	DG19-9	Condenser cover	1
43	DG7-47	Condenser fan	1
	DG19-3	Fan cover	1
44	DG12-6.1	Air-circulating pipe	1
45	DG22-331	Compressor bracket	1
46	DG11-45	Dry filter	1
Spare Part	DG14-190-SL	Top left hinge	1
	DG14-212-SL	Top right hinge	1
	DG22-3021	Bottom grill	1
	DG22-3302-1	Bottom grill	1
	DG22-3303-1	Grill support	2
	DG13-3154	Slider	2
	DG13-3152	Fixing bracket B	1