

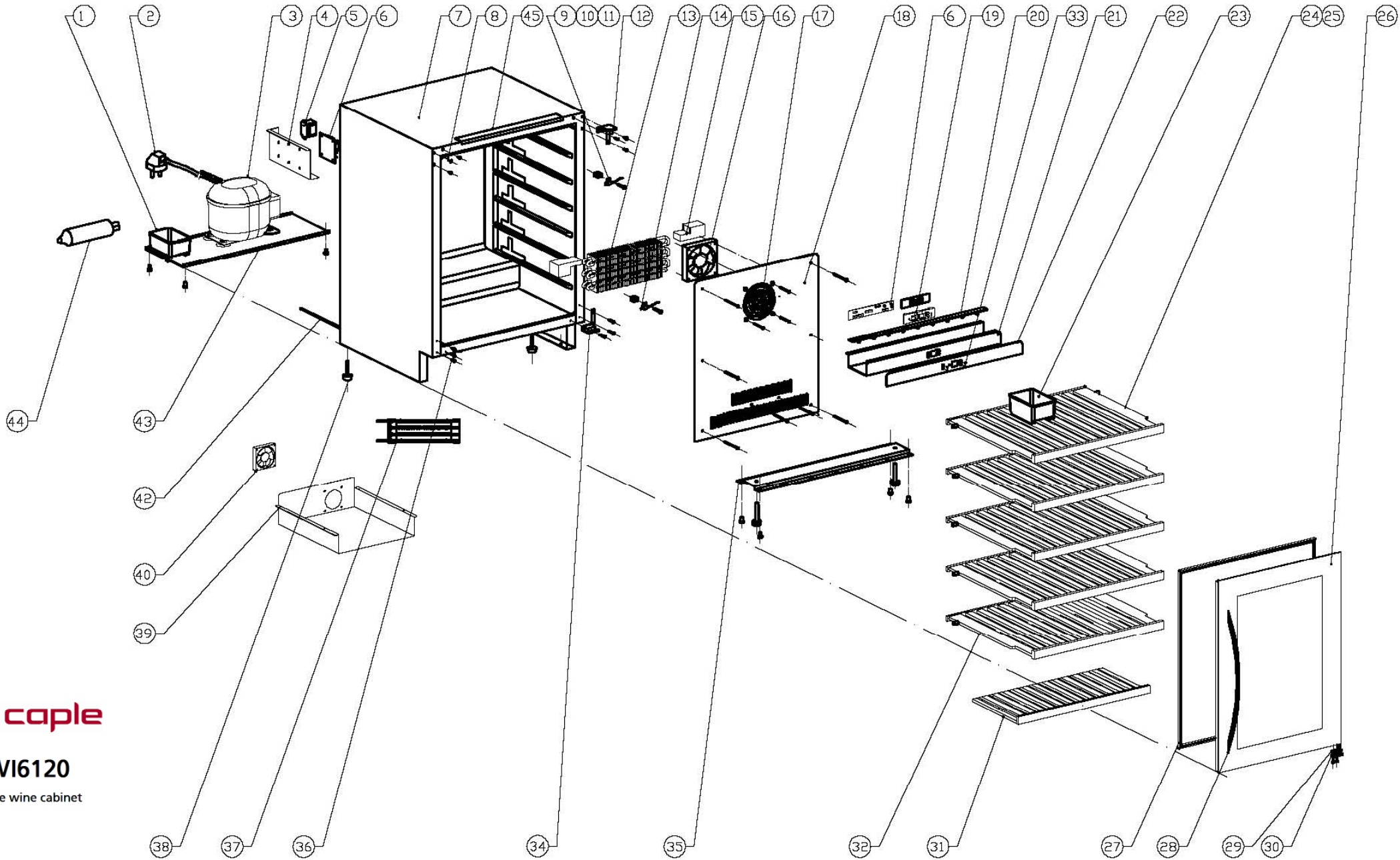


# WI6120

Caple wine cabinet



**Technical information**



**WI6120**  
Caple wine cabinet



## WI6120 - Caple wine cabinet

Item	Part Code	Description	Qty
1	DG13-1	Water tank	1
2	DG2-14	Power cord	1
3	DG1-93	Compressor	1
4	DG13-272-1	PCB board cover	1
5	DG6-16	Transformer	1
6	DG3-99-10	PCB board	1
7	DG26-191	Cabinet	1
8	DG13-268	Decorative nail	3
9	DG13-7	Shelf support	2
10	DG20-1	Wire clamp	2
11	DG8-7-R	Senser	1
12	DG14-190-SR	Top hinge module (Right)	1
13a	DG12-50-1	Evaporator (until 18/05/15)	1
13b	DG12-1-2	Evaporator (from 18/05/15)	1
14	DG8-7-W	Senser	1
15	DG18-93	foam	2
16	DG7-48	Evaporator fan	1
17	DG19-6	Fan cover	1
18	DG22-111	Air duct board	1
19	DG13-327	Air duct board	1
20	DG3-17-W	LED LIGHT	1
21	DG22-379	Electrical box	1
22	DG20-385	Display panel	1
23	DG13-1.2	Humid box	1
24	DG15-211-1		1
25	DG15-23		5
26	DG23-171	door	1
27	M160-050	Gasket	1
28	DG22-3064		1
29	DG22-3057	door aixs	1
30	DG13-3155		1
31	DG15-33	Wooden shelves NEW G2	1
32	DG15-211		4
33	DG13-130-S		4
34	DG14-212-SR	Lower hinge module(Right)	1
35	DG22-330	Support bracket of front legs	1
36	DG13-8	Decorative nail	3
37	DG12-91	Condenser	1
38	DG13-3146	Cabinet leg, type BC50N	4
39	DG19-9	Condenser cover	1
40a	DG7-47	Condenser fan	1
40b	DG17-145-2		1
41	DG19-3	Fan cover	1
42	DG12-6.1	Air-circulating pipe	1



## WI6120 - Caple wine cabinet

Item	Part Code	Description	Qty
43	DG22-331	Compressor bracket	1
44	DG11-45	Drier	1
45	DG13-3149		1
-	DG14-190-SL	Upper hinge-left	1
--	DG14-212-SL		1
---	DG22-3021		1
----	DG22-3302		1
-----	DG22-3303		2
-----	DG13-3154		2
-----	DG13-3152		1



WI6120

Caple wine cabinet

