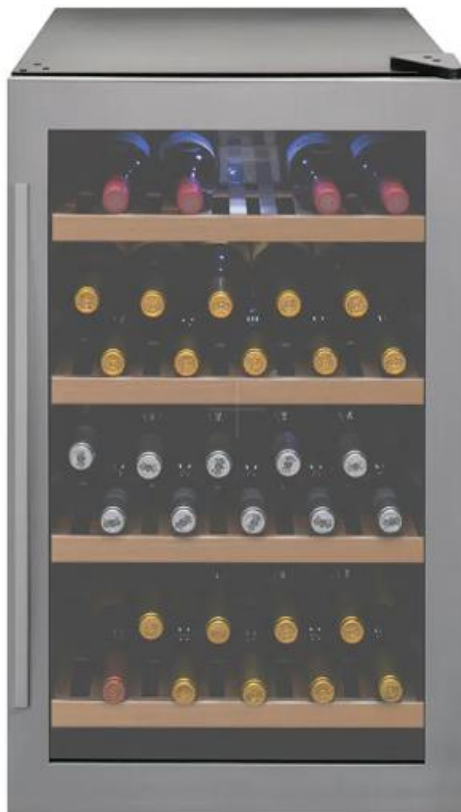




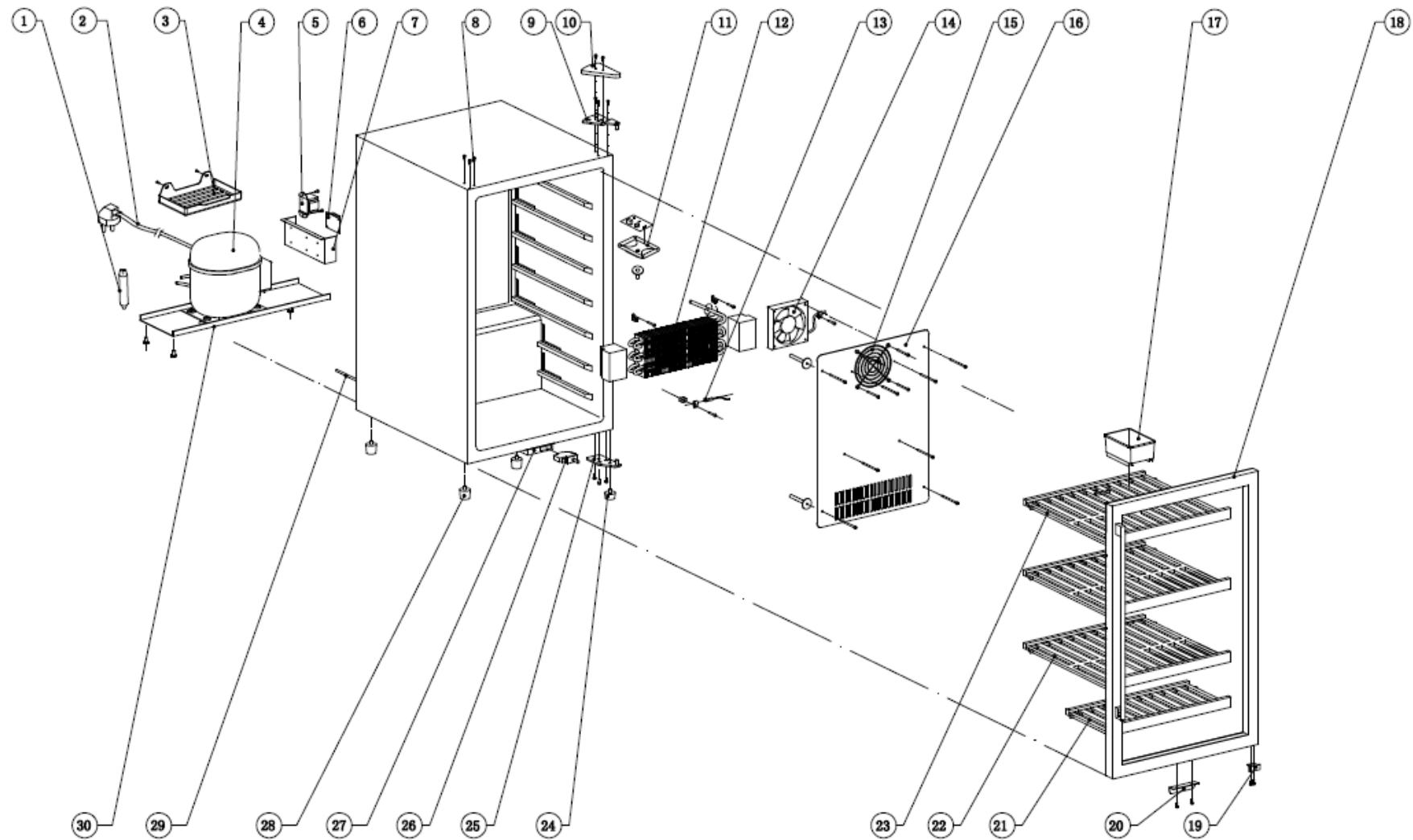
Caple WF334 Caple Freestanding Wine Cabinet Classic SS



Technical Manual



Caple WF334 Caple Freestanding Wine Cabinet Classic SS





Caple WF334 Caple Freestanding Wine Cabinet Classic SS

Item	Part Number	Description	Quantity
1	DG11-45	Drier filter	1
2	DG2-14	Power cord	1
3	DG13-199	Water tank	1
4	DG1-137	Compressor	1
5	DG6-2	Transformer	1
6	DG3-102-4	PCB board	1
7	DG13-272-1	Electrical box	1
8	DG13-8	Trunk-nail	6
9	DG14-1.2	Top hinge module	1
10	DG13-12	Decorative cover	1
11	DG13-27	Light cover	1
12	DG12-50-2	Evaporator	1
13	DG8-8	Sensor	1
14	DG7-48	Evaporator fan	1
15	DG19-1	Fan cover	1
16	DG22-132	Air duct board	1
17	DG13-1.1	Humid box	1
18	DG23-246-2020	Door	1
	DG22-3490	Handle	1
	M184-008	Gasket	1
19	DG13-215	Door stopper	1
20	DG14-180	Extrusion-board of lamp switch	1
21	DG15-37	Wooden shelf C2	1
	DG15-44	Front bar	1
22	DG15-35	Wooden shelf B2	2
	DG15-44	Front bar	2
23	DG15-36	Wooden shelf B2A	1
	DG15-44	Front bar	1
24	DG13-6.2	Cabinet leg, type BC50	1
25	DG14-166	Lower hinge module	1
26	DG9-9	Door switch	1
27	DG14-26.1	Switch box of door lamp	1
28	DG13-6.1	Cabinet leg, type BC50N	3
29	DG12-140	Cupreous tube	1
30	DG22-89-1	Compressor bracket	1