



WF1552

Caple Free Standing Wine Cabinet 3 Zones Classic

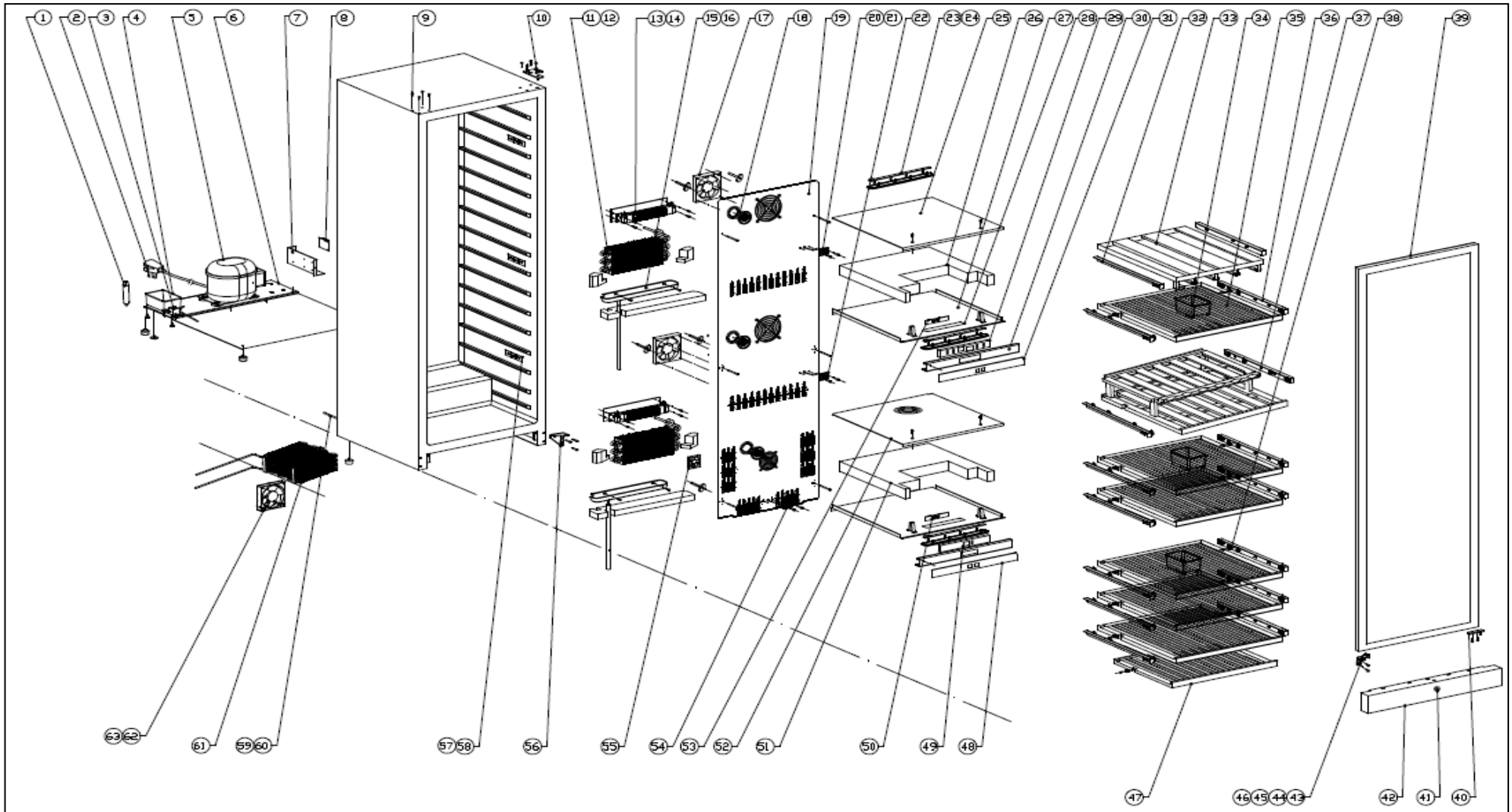


Technical Manual



WF1552

Caple Free Standing Wine Cabinet 3 Zones Classic





WF1552

Caple Free Standing Wine Cabinet 3 Zones Classic

Item	Part Number	Description	Quantity
1	DG11-46	Dry filter	1
2	DG2-14	Power cord	1
3	DG12-217-1	Refrigerant valve	1
4	DG13-1	Water tank	1
5	DG1-126	Compressor	1
6	DG22-3956	Compressor bracket	1
7	DG22-3338	Electrical box cover	1
8	DG28-189	PCB	1
9	DG13-8	Decorative nail	4
10	DG14-160-SR	Top right hinge	1
11	DG18-63	Foam	4
12	DG12-183	Evaporator	2
13	DG14-24	Heat insulation panel	2
14	DG11-1	Heater	2
15	DG13-10	Water box	2
16	DG18-59	Foam	2
17	DG7-48	Fan	3
18	DG13-3287	Charcoal filter	3
19	DG22-3812	Air duct board A	1
20	DG8-25-R	Sensor	1
21	DG13-198-W	Sensor cover	3
22	DG8-25-Y	Sensor	1
23	DG3-250	LED light	3
24	DG13-3116	Light cover	3
25	DG22-234-1	Air duct board B	1
26	DG18-60	Foam	1
27	DG22-3813	Air duct board C	2
28	DG13-3115	Light holder	2
29	DG13-3063	Display support for upper and middle compartment	1
30	DG13-3129-1	Display board box	2
31	DG20-568	Control panel film	1
32	DG22-3188-L	Left shelf support	14
33	DG15-397	Glass holder shelf	1
34	DG13-1.1	Humid box	3
35	DG15-195-N	Wooden shelf	7
	DG13-274	Layer board	14



WF1552

Caple Free Standing Wine Cabinet 3 Zones Classic

Item	Part Number	Description	Quantity
36	DG22-3188-R	Right shelf support	14
37	DG15-156	Presentation shelf	1
	DG13-274	Layer board	2
38	DG13-7	Shelf stopper	16
39	DG23-444	Door	1
	DG22-3490	Handle	1
	M160-057	Gasket	1
40	DG14-169-SR	Right axis	1
41	DG14-140	Lock	1
42	DG22-3699	Bottom grill	1
43	DG22-3623-S	Bracket	1
44	DG22-3687	Roller	1
45	DG13-3283	Grounder	1
46	DG22-3625-S	Slider	1
47	DG15-196-N	Wooden shelf	1
48	DG20-568-1	Lower display panel	1
49	DG13-3058	Display support for lower compartment	1
50	DG28-189	Display board for lower compartment	1
51	DG18-1043	Foam	1
52	DG22-348-1	Air duct board B	1
53	DG28-189	Display board for upper and middle compartment	1
54	DG8-25-W	Sensor	1
55	DG7-41-BH	Fan	1
56	DG14-211-SR	Lower right hinge	1
57	DG3-236-W	LED light	6
58	DG13-3061	Light cover	6
59	DG12-110-2	Air-circulating pipe (Upper)	1
60	DG12-110	Air-circulating pipe (Lower)	1
61	DG12-91-1	Condenser	1
62	DG7-47	Condenser fan	1
63	DG19-3	Fan cover	1