



WF1103

Caple Wine cellar



Technical information



New product information sheet

Product name: WF1103

Description: Freestanding/slot-in wine cabinet

Product code: WF1103

Features

2 separate temperature zones for red or white wine, independently controlled

No frost compressor cooling system

Fan circulated cool air for even temperature distribution

2 heaters raise internal temperature when external temperature drops

Air ventilation through base plinth

Quiet operation 42dB

100% CFC/HFC free

Electronic temperature control and LED display

White LED interior lighting with on/off switch

2 humidity control water tanks

Door lock

Top zone - 5 sliding shelves

Bottom zone - 4 sliding shelves and 1 base shelf.

Stainless steel door frame, handle and grill

Telescopic beech shelves

Toughened UV protected glass door

Black cabinet interior and exterior

Both zones temperature range 5C-18C

340 litre total gross capacity

Max. 110 wine bottles 750ml

(55 in upper compartment, 55 in lower Compartment, 11 bottles per sliding or base shelf)



Dimensions

Width 595mm

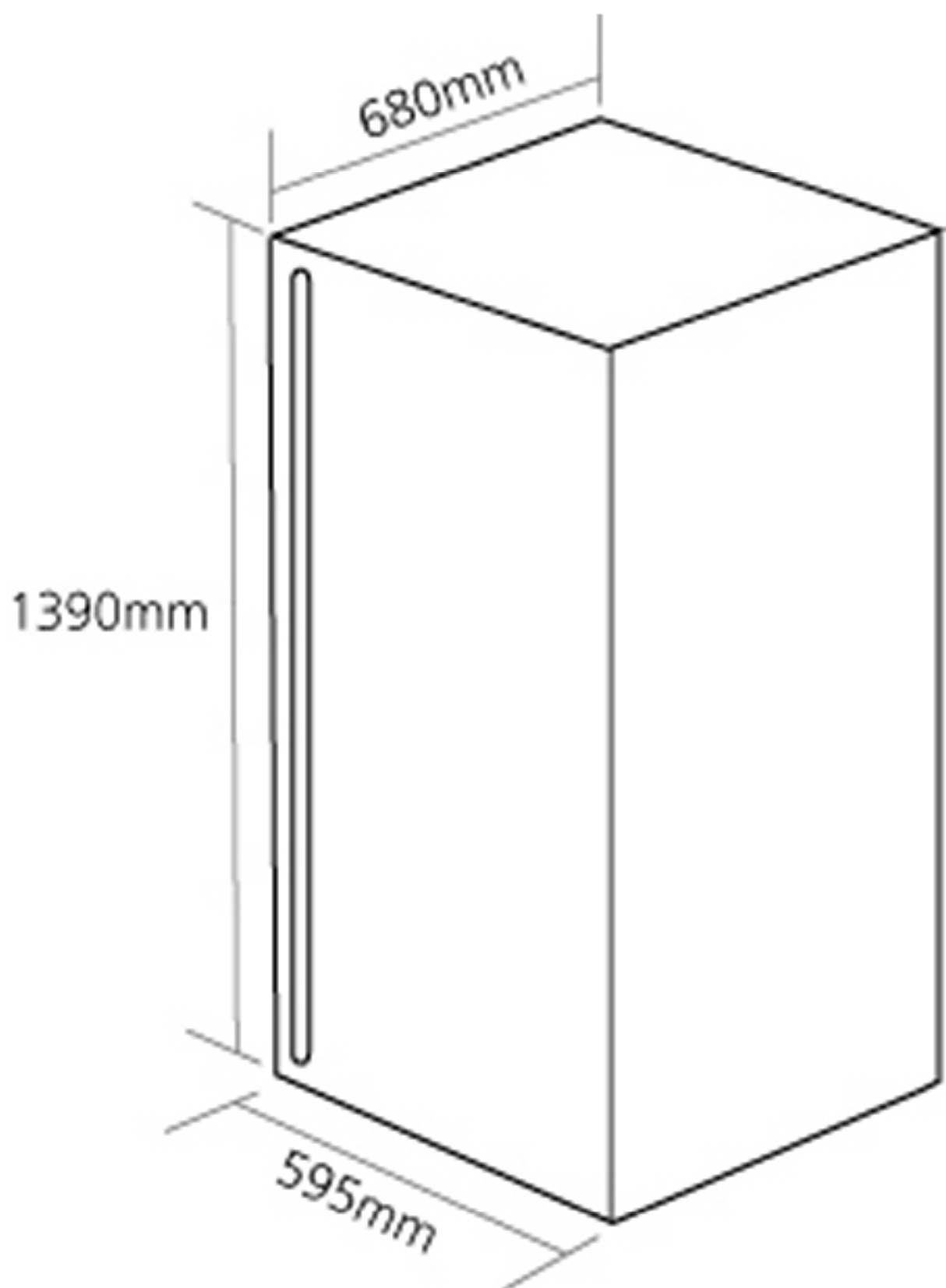
Depth 680mm

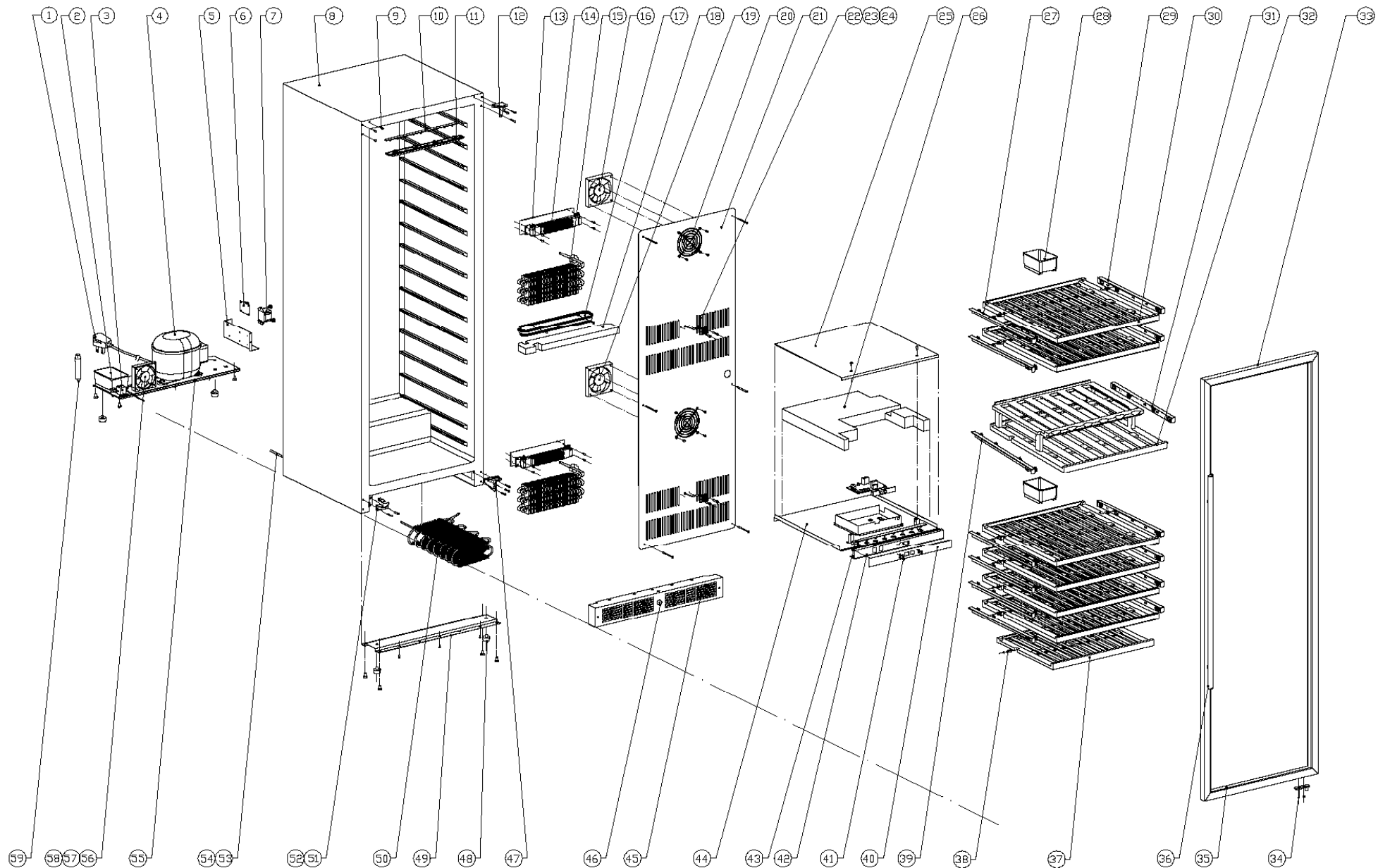
Height 1428mm



WF1103

Caple Wine cellar





WF1103

Caple Wine cellar

8 7 6 5 4 3 2 1



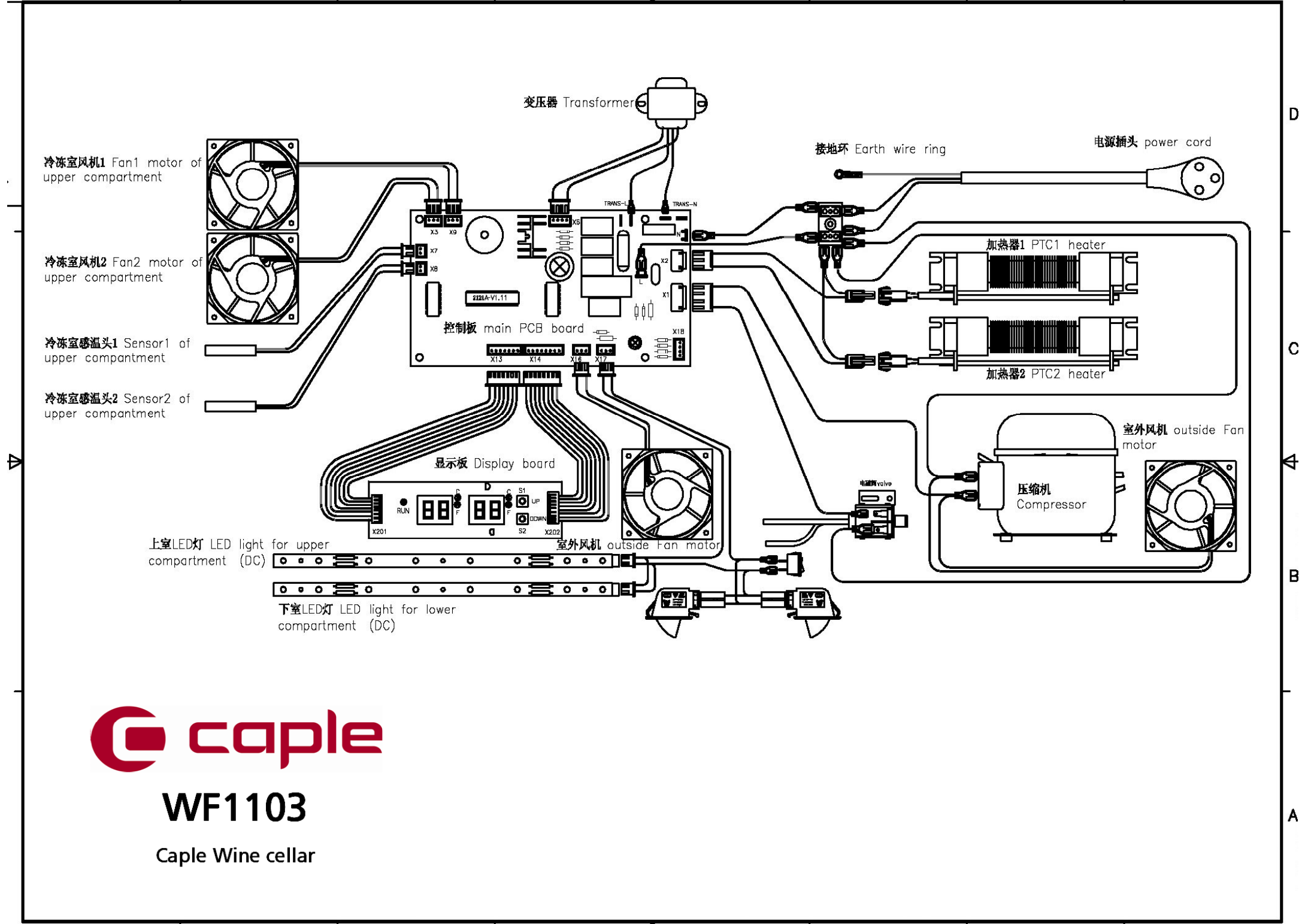
WF1103 - Caple wine cellar

Item	Part Code	Description	Qty
1	DG2-14	Power cord	1
2	DG13-1	Water tank	1
3	DG12-37.1	Refrigerrant valve	1
4	DG1-61	Compressor	1
5	DG22-302	Electrical box cover	1
6	DG6-19	Transformer	1
7	DG3-77.2	PCB board	
8	DG26-1	Cabinet	1
9	DG13-8	Decorative nail	3
10	DG3-13-W	LED light	1
11	DG13-129	LED Light Cover	1
12	DG14-1-SR	Top hinge module	1
13	DG14-24	heat insulation panel	2
14	DG11-1	Heater	2
15	DG12-50	Evaporator	2
16	DG7-21-BH	Evaporator fan(Upper)	1
17	DG13-10	Water box	1
18	DG18-59	Foam	1
19	DG7-20-BH	Evaporator fan(Lower)	1
20	DG19-6	Fan cover	2
21	DG22-283	Air duct board A	1
22	DG8-21-1	Senser	1
23	DG13-198	Senser cover	2
24	DG8-21	Senser	1
25	DG22-234	Upper panel for middle airway-board	1
26	DG18-60	Foam	1
27	DG13-253-L	New left track	6
28	DG13-1.1	Humid box	2
29	DG13-253-R	New right track	6
30	DG15-155	Wooden shelves E1	6
31	DG15-165	Display wooden shelf	1
32	DG13-253-1R	Right track	1
33	DG23-76	Cabinet door	1
34	DG14-169-SR	Lower hinge	1
35	M160-022	Gasket	1
36	DG14-107	cylinder knob	1
37	DG15-1002.2	Wooden shelves WE-2	1
38	DG13-7	Shelf support	16
39	DG13-253-1L	Left track	1
40	GB20-89	Display panel	1



WF1103 - Caple wine cellar

Item	Part Code	Description	Qty
41	DG13-130-S	Button	4
42	DG13-194	Display support	1
43	DG3-18-W	LED light	1
44	DG22-233	Lower panel middle airway-board	1
45	DG13-372-SR	Decorative frame	1
46	DG14-105	Lock Assembly	1
47	DG14-170-SR	Lower hinge module right	1
48	DG13-6.1	Cabinet leg, type BC50	4
49	DG22-240	Support bracket of front legs	1
50	DG12-3	Condenser	1
51	DG14-161-SL	Anti-drop left hinge	1
52	DG13-366-S	Door supporter	1
53	DG12-110-2	Air-circulating pipe (Upper)	1
54	DG12-111	Air-circulating pipe (Lower)	1
55	DG22-254	Compressor bracket	1
56	DG7-22-H	Condenser fan	1
57	DG19-3	Fan cover	1
58	DG14-56	Fan bracket	2
59	DG11-4.1	Dry filter	1



变压器 Transformer

接地环 Earth wire ring

电源插头 power cord

冷冻室风机1 Fan1 motor of upper compartment

冷冻室风机2 Fan2 motor of upper compartment

冷冻室感温头1 Sensor1 of upper compartment

冷冻室感温头2 Sensor2 of upper compartment

加热器1 PTC1 heater

加热器2 PTC2 heater

室外风机 outside Fan motor

压缩机 Compressor

控制板 main PCB board

显示板 Display board

室外风机 outside Fan motor

上室LED灯 LED light for upper compartment (DC)

下室LED灯 LED light for lower compartment (DC)



WF1103

Caple Wine cellar

8 7 6 5 4 3 2 1

D

C

B

A