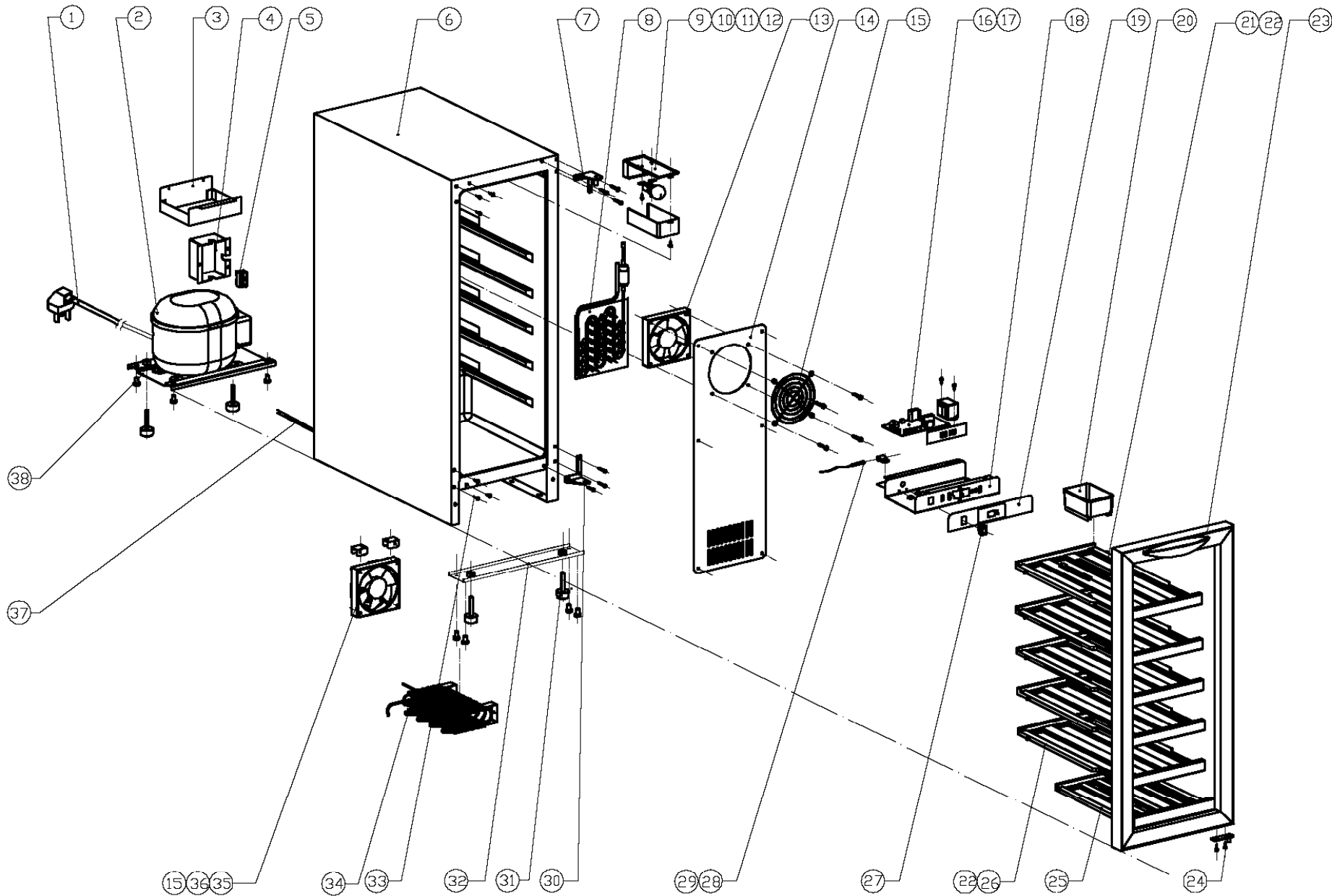




WCI30B

Caple Wine Cellar

Technical information



WCI30B

Caple Wine Cellar



WCI30B - Caple Wine Cellar

| Item | Part Code | Description | Qty |
|------|------------|--------------------------------------|-----|
| 1 | DG2-3 | Power cord | 1 |
| 2 | DG1-13 | Compressor | 1 |
| 3 | DG18.01-22 | Water tank | 1 |
| 4 | DG13-2 | Electrical box cover | 1 |
| 5 | DG11-2 | Junction block | 1 |
| 6 | DG22-36 | Cabinet | 1 |
| 7 | DG14-15 | Top hinge module | 1 |
| 8 | DG12-27 | Evaporator | 1 |
| 9 | DG5-2 | Bulb | 1 |
| 10 | DG4-2 | Lamp-holder | 1 |
| 11 | DG13-3 | Lamp-stand | 1 |
| 12 | DG13-3.1 | Lamp cover for upper interior | 1 |
| 13 | DG7-3 | Evaporator fan | 1 |
| 14 | DG22-38 | Air duct board | 1 |
| 15 | DG19-1 | Fan cover | 2 |
| 16 | DG3-4.3 | PCB board | 1 |
| 17 | DG6-1 | Transformer | 1 |
| 18 | DG22-33 | Electrical box | 1 |
| 19 | DG20-12 | Display panel | 1 |
| 20 | DG13-1.2 | Humid box | 1 |
| 21 | DG15-26.1 | Wooden shelves A91 | 1 |
| 22 | DG15-25 | Stainkess Steel edge, wooden shelves | 5 |
| 23 | DG23-11 | Door | 1 |
| 24 | DG14-2.6 | Lower hinge | 1 |
| 25 | DG15-27 | Wooden shelves C1 | 1 |
| 26 | DG15-26 | Wooden shelves A9 | 4 |
| 27 | DG9-2 | Switch | 1 |
| 28 | DG8-8 | Senser | 1 |
| 29 | DG20-1 | Wire clamp | 1 |
| 30 | DG14-31 | Lower hinge module | 1 |
| 31 | DG13-6.11 | Cabinet leg, type BC50N | 4 |
| 32 | DG22-40 | Support bracket of front legs | 1 |
| 33 | DG13-8 | Decorative nail | 6 |
| 34 | DG12-3.1 | Condenser | 1 |
| 35 | DG7-1 | Condenser fan | 1 |
| 36 | DG14-33 | Bracket fan | 2 |
| 37 | DG12-6 | Air-circulating pipe | 1 |
| 38 | DG22-39 | Compressor bracket | 1 |