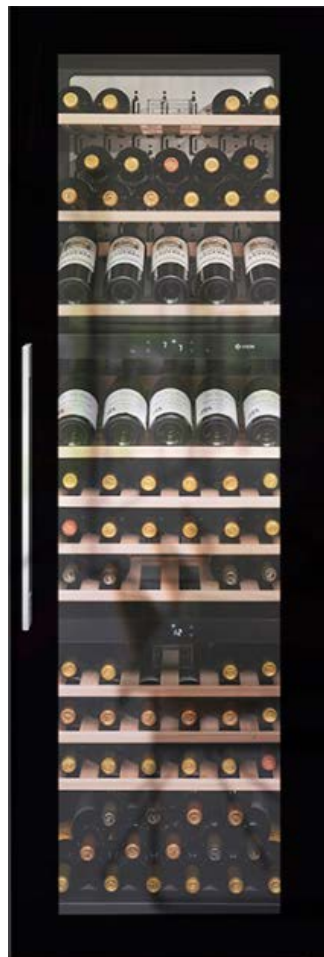




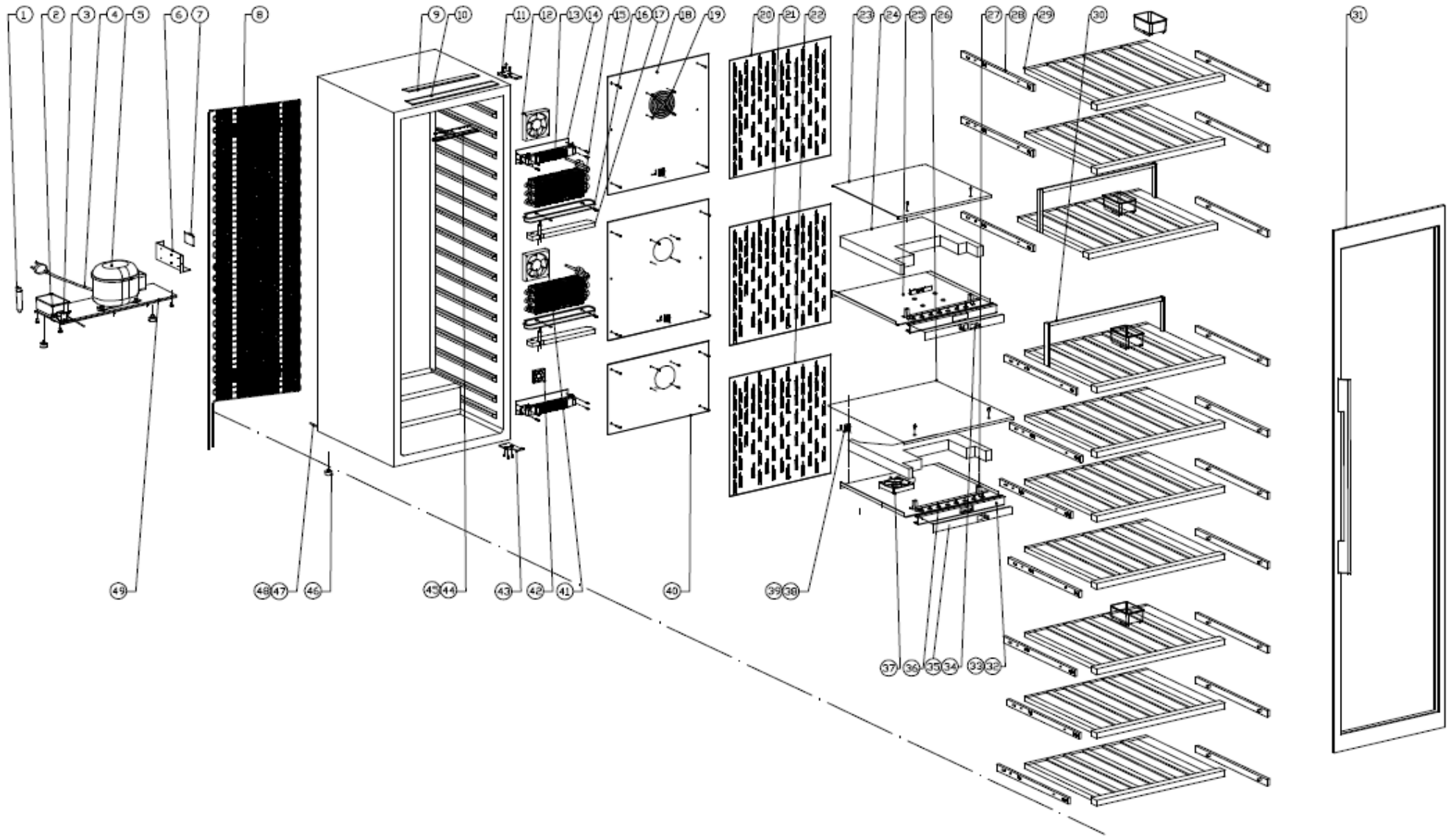
WC1795



Technical Manual



WC1795 – Caple Sense in-column wine cabinet





WC1795 – Cable Sense In-column Wine Cabinet

Item	Part No .	Description	Qty
1	DG11-46	Dry filter	1
2	DG13-1	Water tank	1
3	DG12-37.1	Refrigerant valve	1
4	DG2-14	Power cord	1
5	DG1-90	Compressor	1
		Start Device	1
		Overload Protector	1
6	DG22-3289	Electrical box cover	1
7	DG3-222-2	PCB board to 03/11/18	1
8	DG11-49	Condenser	1
9	DG13-472	Limiting bar(A)	1
10	DG13-473	Limiting bar(B)	1
11	DG14-251-R	Top right hinge	1
12	DG7-48	Evaporator fan	1
13	DG11-18	Heater	2
14	DG14-148	Heat insulation panel	2
15	DG12-183	Evaporator	2
16	DG13-10	Water box	2
17	DG18-115	Foam	2
18	DG22-3266	Upper panel for air- leaded board	2
19	DG19-6	Fan cover	2
20	DG22-3268	Upper air duct board A	1
21	DG22-3270	Middle air duct board A	1
22	DG22-3269	Lower air duct board A	1
23	DG22-3259	Air duct board B	1
24	DG18-111	Foam	2
25	DG22-3260	Air duct board C	1
26	DG22-3261	Air duct board D	1
27	DG22-3262	Air duct board E	1
28	DG22-3281	Track	20

Item	Part No .	Description	Qty
29	DG15-246-1	Wooden shelf	8
	DG22-3271-L	Left shelf support	8
	DG22-3271-R	Right shelf support	8
30	DG15-247-1	Presentation wooden shelf	2
	DG22-3271-L	Left shelf support	2
	DG22-3271-L	Right shelf support	2
31	DG23-357-1	Door	1
	DG22-3490	Handle	1
	M147-016	Gasket	1
32	DG13-3129	Display board box	2
33	DG13-3063	Display support	2
34	DG20-375	Upper and middle compartment control panel	1
35	DG20-376	Lower compartment control panel	1
36	DG3-18-W	LED light	2
37	DG7-48	Evaporator fan	1
38	DG13-198	Sensor cover	2
	DG13-198-W	Sensor cover	1
	FL-343	Clip	6
39	DG8-10	Sensor	3
40	DG22-3265	Lower air deflector	1
41	DG7-48	Evaporator fan	1
42	DG7-41-BH	Fan	1
43	DG14-251-L	Lower right hinge	1
44	DG3-14-W	LED light	1
45	DG13-3116	LED Light Cover	1
46	DG13-6-15	Cabinet leg	4
47	DG12-110-2	Air-circulating pipe for lower compartment	1
48	DG12-110-1	Air-circulating pipe for upper compartment	1
49	DG22-3275	Compressor bracket	1
Spare Part	DG22-3021	Bottom grill	1

DG3-004-2 Upper/middle Display PCB from 04/11/2018

DG3-005-2 Lower Display PCB