

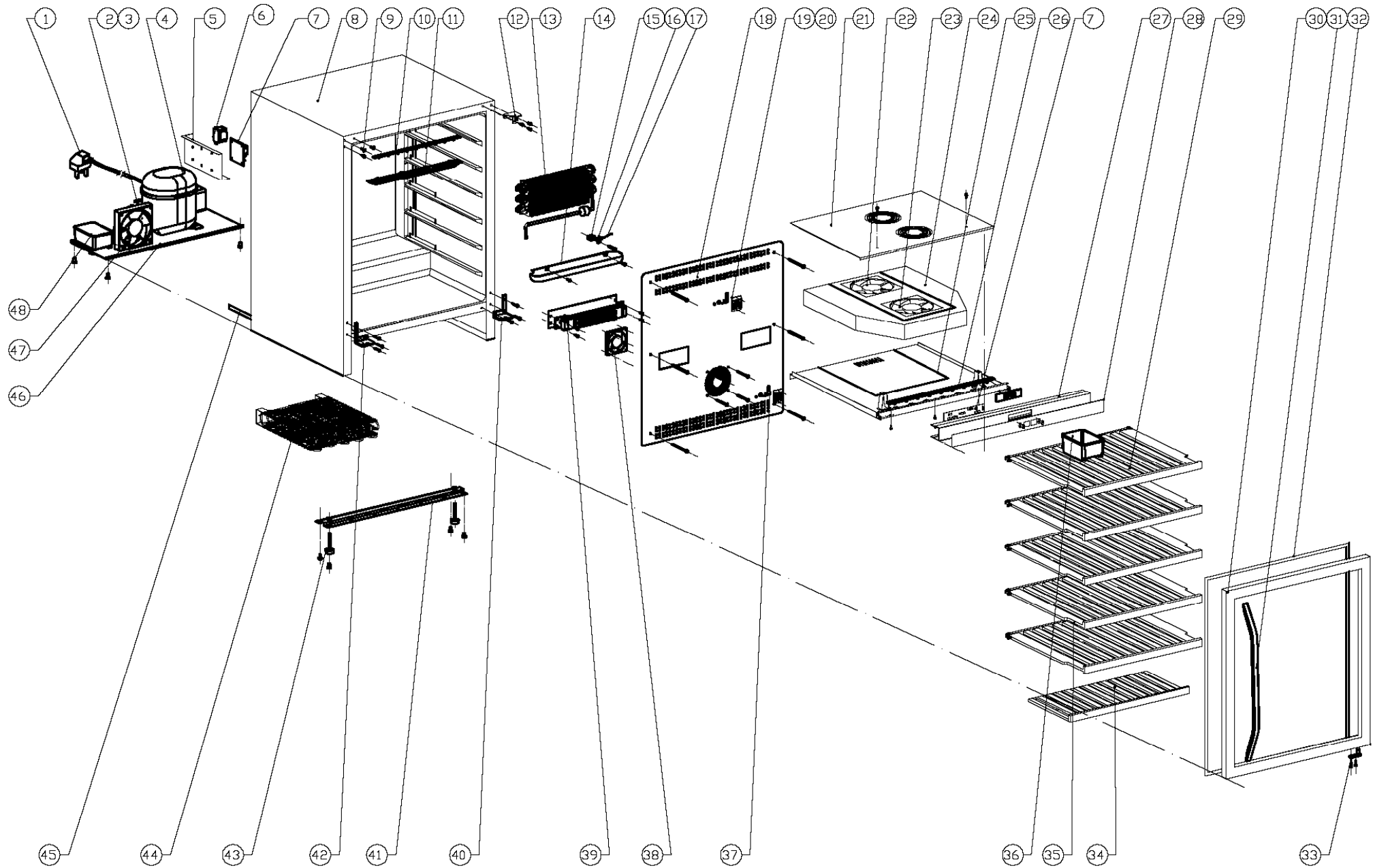


JLWF603

JLP 600m 2 temp w.cell



TECHNICAL INFORMATION



caple

JLWF603

JLP 600m 2 temp w.cell

8 7 6 5 4 4 3 1 2 1



JLWF603 - JLP 600m 2 temp w.cell

Item	Part No.	Description	Qty
1	DG2-14	Power cord	1
2	DG7-23-H	Condenser fan	1
3	DG19-3	Fan cover	1
4	DG1-35	Compressor	1
5	DG13-272-1	PCB board cover	1
6	DG6-15	Transformer	1
7	DG3-100-1	PCB board	1
8	DG26-31	Cabinet	1
9	DG13-268	Decorative nail	3
10	DG3-13-W	LED light	1
11	DG13-129	LED light cover	1
12	DG14-126-SR	Top hinge module (Right)	1
13	DG12-1	Evaporator	1
14	DG13-10	Water box	1
15	DG13-7	Shelf support	1
16	DG20-1	Wire clamp	2
17	DG8-9	Senser	1
18	DG22-422	Air duct board	1
19	DG8-8	Senser	1
20	DG13-198	Cover of senser	2
21	DG22-421	Upper panel for middle airway-board	1
22	DG7-40-BH	Evaporator fan1	1
23	DG7-40-BH	Evaporator fan1	1
24	DG18-76	Foam	1
25	DG22-303	Lower panel for middle airway-board	1
26	DG3-18-W	LED LIGHT	1
27	DG13-33	Display board support	1
28	DG20-167	Display panel	1
29	DG15-157-1	Wooden shelves NEWA6A	1
30	DG23-140	Door	1
31	DG14-411	handle	1
32	M184-006	Gasket	1
33	DG14-116	Lower hinge	1
34	DG15-33	Wooden shelf G2	1
35	DG15-157	Wooden shelves NEWA6	4



JLWF603 - JLP 600m 2 temp w.cell

Item	Part No.	Description	Qty
36	DG13-1.2	Humid box	1
37	DG8-23-1	Senser	1
38	DG7-41-BH	PTC heater fan	1
39	DG11-1	PTC heater	1
40	DG14-172-SR	Lower hinge module(Right)	1
41	DG22-88	Support bracket of front legs	1
42	DG14-172-SL	Lower hinge module (Lelf)	1
43	DG13-6.11	Cabinet leg, type BC50N	4
44	DG12-15	Condenser	1
45	DG12-6.1	Air-circulating pipe	1
46	DG22-80	Compressor bracket	1
47	DG14-56	Bracket of fan (pair)	2
48	DG13-1	Water tank	1
	DG22-284	Decorative frame	1