



# C743G

Caple 60cm gas on glass hob

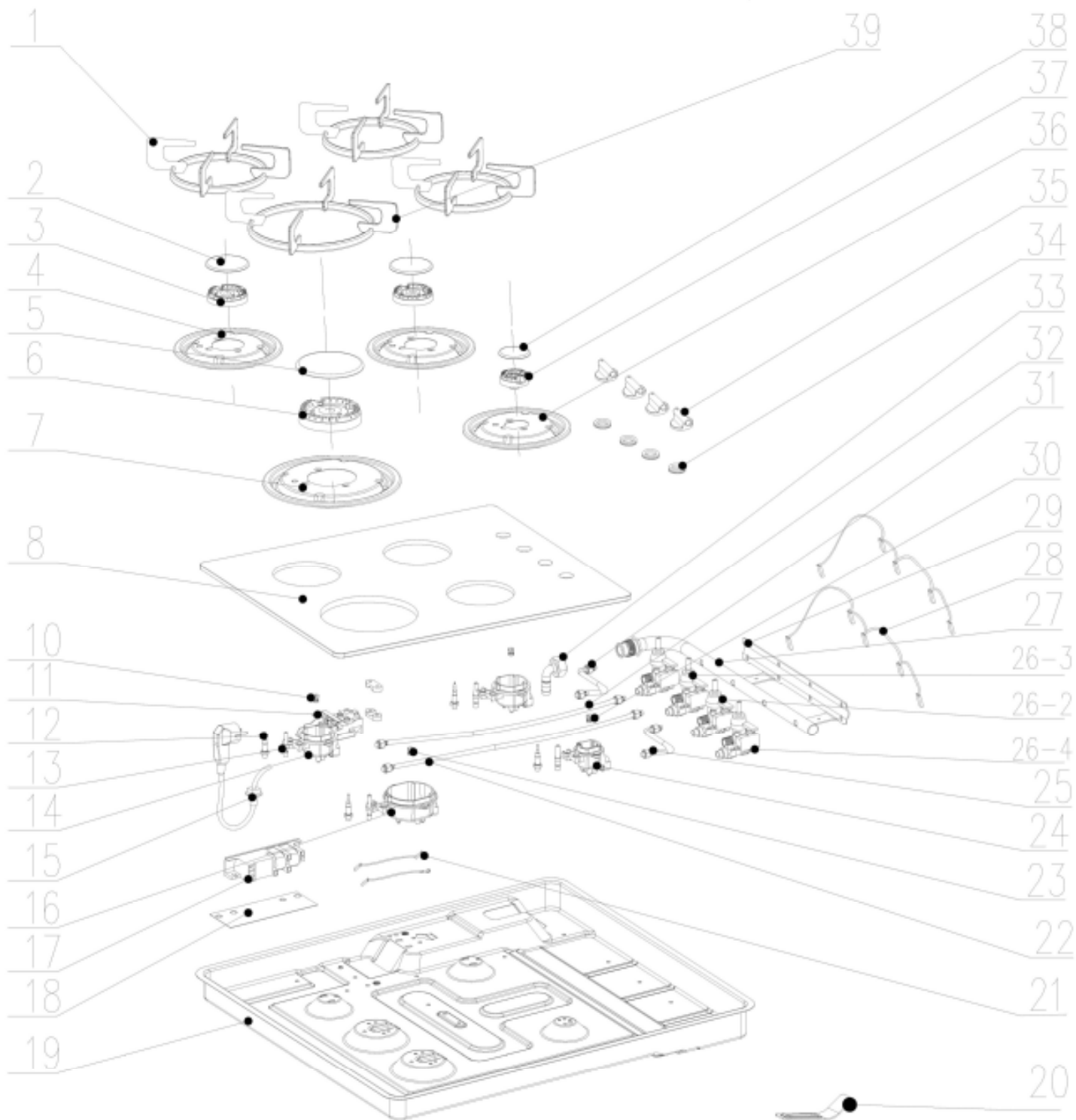


**Technical information**



# C743G

Caple 60cm gas on glass hob





## C743G - Caple 60cm gas on glass hob

| Item           | Part Code      | Description                                    | Qty |
|----------------|----------------|--|-----|
| 1              | 12366200002995 | pan support component for semi and alux burner | 3   |
| 2              | 12971100001429 | burner cap 3#                                  | 2   |
| 3              | 12971100001461 | sprayer 3#                                     | 2   |
| 4              | 12266200001494 | drip tray 3#                                   | 2   |
| 5              | 12971100001428 | burner cap 2#                                  | 1   |
| 6              | 12971100001459 | sprayer 2#                                     | 1   |
| 7              | 12266200001495 | drip tray 2#                                   | 1   |
| 8              | 12566200A00916 | top plate                                      | 1   |
| 10             | 12971100001548 | burner cap 4#                                  | 1   |
| 11             | 12166200000091 | terminal box                                   | 1   |
| 12             | 12966200000320 | thermocouple(500mm)                            | 2   |
| 12             | 12966200000319 | thermocouple(350mm)                            | 2   |
| 13             | 12971100001261 | ignition pin components(220mm)                 | 1   |
| 13             | 12971100001239 | ignition pin components(600mm)                 | 3   |
| 14             | 12971100001285 | burner cup #3                                  | 2   |
| 15             | 17466200000040 | power cord                                     | 1   |
| 16             | 12971100001284 | burner cup #2                                  | 1   |
| 17             | 17471100000197 | ignition box                                   | 1   |
| 18             | 12166200000089 | Pulse ignitor gasket                           | 1   |
| 19             | 12266200000218 | bottom plate                                   | 1   |
| 20             | 12266200000582 | bottom plate bracket                           | 4   |
| 21             | 17466200000023 | connection wire                                | 1   |
| 22             | 12966200000199 | aluminum gas tube (left front)                 | 1   |
| 23             | 12971100001510 | burner cap 2#                                  | 1   |
| 24             | 12971100001295 | burner cup #4                                  | 1   |
| 25             | 12966200000202 | aluminum gas tube(right front)                 | 1   |
| 26-2           | 12366200000189 | valve components 2#                            | 1   |
| 26-3           | 12366200000205 | valve components 3#                            | 2   |
| 26-4           | 12366200000204 | valve components 4#                            | 1   |
| 27             | 12966200000041 | inlet pipe components                          | 1   |
| 28             | 17466200000024 | wire of Micro Switch                           | 2   |
| 29             | 12266200000854 | valve bracket                                  | 1   |
| 30             | 12971100001468 | burner cap 3#                                  | 2   |
| 31             | 12966200000200 | aluminum gas tube(left rear)                   | 1   |
| 32             | 12966200000201 | aluminum gas tube (right rear)                 | 1   |
| 33             | 12966200000324 | hose coupler                                   | 1   |
| 34             | 12666200000034 | knob waterproof rubber ring                    | 4   |
| 35             | 12366200001194 | knob components                                | 4   |
| 36             | 12266200001493 | drip tray 4#                                   | 1   |
| 37             | 12971100001457 | sprayer #4                                     | 1   |
| 38             | 12971100001430 | burner cap #4                                  | 1   |
| 39             | 12366200002994 | pan support for rapid burner                   | 1   |
| LPG injector 1 | 12971100001514 | LPG injector                                   | 1   |
| LPG injector 2 | 12971100001499 | LPG injector                                   | 2   |
| LPG injector 3 | 12971100001511 | LPG injector                                   | 1   |