



C742G

Caple 60cm gas on glass hob (with FSD)



TECHNICAL INFORMATION

New product information sheet

Product name: C742G

Description: Gas on glass hob

Product code: C742G



Features:

8mm tempered black glass
4 burners
Flame safety device (FSD)
Steel and enamelled pan supports with rubber feet
Steel control knobs
Auto electronic ignition
LPG jets included

Cooking output:

1 rapid burner 2.5kW
2 semi-rapid burner 1.5kW
1 simmer burner 1.0kW

Dimensions: Width 590mm, Depth 510mm

Launch date: Mid March 2010

Old plate structure:

The groove is small and the pan support is placed out of the inox plate, so that the pan is easy to move when placing.



New plate:

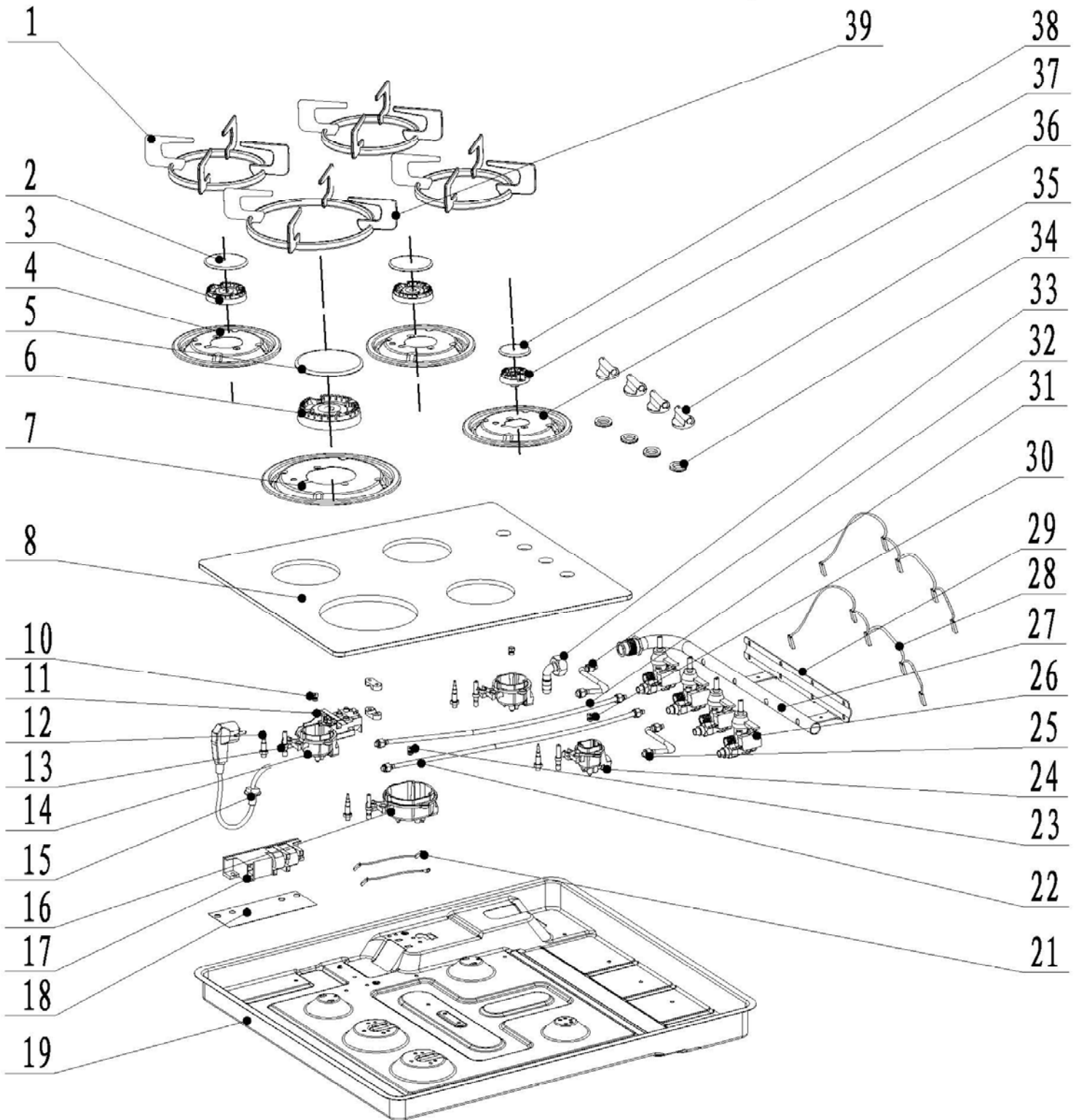


The groove of the new plate is much deeper. The groove is around 6-8mm and placed inside of the plate, to make the pan is stable when placing.



C742G

Caple 60cm gas on glass hob





C742G - Caple 60cm gas on glass hob

Item	Part Code	Description	Qty
1	423225500224	pan support component #1	3
2	261566400300	cap 3#	2
3	261566800900	flame spreader 3#	2
4	423225700088	drip tray 3#	2
5	261566400100	cap 2#	1
6	261566800800	flame spreader 2#	1
7	423225700090	drip tray 2#	1
8	423120100072	top plate	1
10	423229100450	cap 4#	1
11	423324000012	terminal box	1
12	423023100029	thermocouple	2
12	423023100028	thermocouple	2
13	423023500062	ignition pin components	3
13	423023500064	ignition pin components	1
14	291600100010	cup #3	2
15	423020300023	power cord	1
16	291600100009	cup #2	1
17	261257500260	ignition box	1
18	423320400074	Pulse ignitor gasket	1
19	423225600076	bottom plate	1
21	423020400017	connection wire	1
22	423226200130	pipe components	1
23	423229100452	cap 2#	1
24	291600100011	cup #4	1
25	423226200129	pipe components	1
26	423225900499	valve components	4
27	423226100193	inlet pipe components	1
28	423020400018	wire of Micro Switch	2
29	423229600184	valve bracket	1
30	423229100451	cap 3#	2
31	423226200132	pipe components	1
32	423226200128	pipe components	1
33	423226900033	hose coupler	1
34	423320400079	knob waterproof rubber ring	4
35	423225400053	knob components	4
36	423225700089	drip tray 4#	1
37	261566801000	flame spreader #4	1
38	261566400200	cap #4	1
39	423225500223	pan support components 2#	1