



# C704G

Caple 60cm gas hob ( with FSD )



TECHNICAL INFORMATION

# New product information sheet

**Product name:** C704G

**Description:** Stainless steel gas hob

**Product code:** C704G



**Features:**

- Stainless steel
- 4 burners
- Flame safety device (FSD)
- Enamelled pan supports with rubber feet
- Steel control knobs
- Auto electronic ignition
- LPG jets included

**Cooking output:**

- 1 rapid burner 2.5kW
- 2 semi-rapid burner 1.5kW
- 1 simmer burner 1.0kW

**Dimensions:** Width 590mm, Depth 500mm

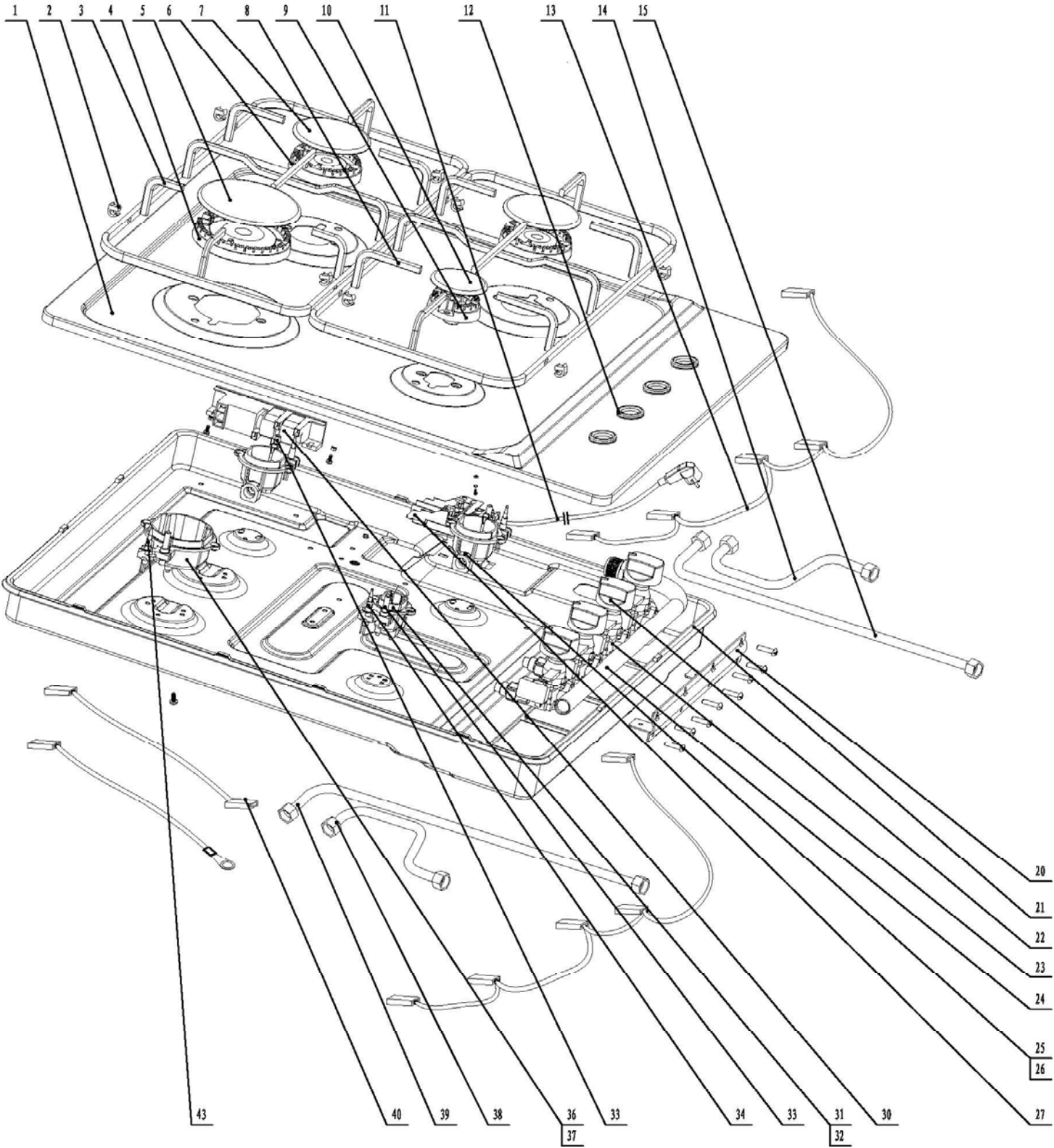
**Pricing: (trade ex VAT) £89.00**

**Launch date: Mid March 2010**



# C704G

Caple 60cm gas hob





## C704G - Caple 60cm gas hob

Item	Part Code	Description	Qty
1	423229800489	top plate	1
2	423320400062	pan support rubber mat	8
3	423225500235	pan support components (left)	1
4	261566800800	flame spreader 2#	1
5	261566400100	cap 2#	1
6	261566800900	flame spreader 3#	2
7	261566400300	cap 3#	2
8	423225500236	pan support components (right)	1
9	261566801000	flame spreader4#	1
10	261566400200	cap 4#	1
11	423020300023	power cord	1
12	423320400061	knob waterproof rubber ring	4
13	423020400018	wire of Micro Switch	2
14	423226200121	pipe components	1
15	423226200120	pipe components	1
20	423229600184	valve bracket	1
21	423225600075	bottom plate	1
22	423225400052	knob components	4
23	423225900499	valve components	4
24	423226100193	inlet pipe components	1
25	423229100451	injector 3#	2
26	291600100010	cup 3#	2
27	423324000012	terminal box	1
30	261257500260	ignition box	1
31	423229100450	injector 4#	1
32	291600100011	cup 4#	1
33	423023500062	ignition pin components	3
33	423023500064	ignition pin components	1
34	423023100029	Thermocouple components	2
36	423229100452	injector 2#	1
37	291600100009	cup 2#	1
38	423226200123	pipe components	1
39	423226200122	pipe components	1
40	423020400017	connection wire	1
43	423023100028	Thermocouple components	2

12971100001131 Fixing Clips/Screws