

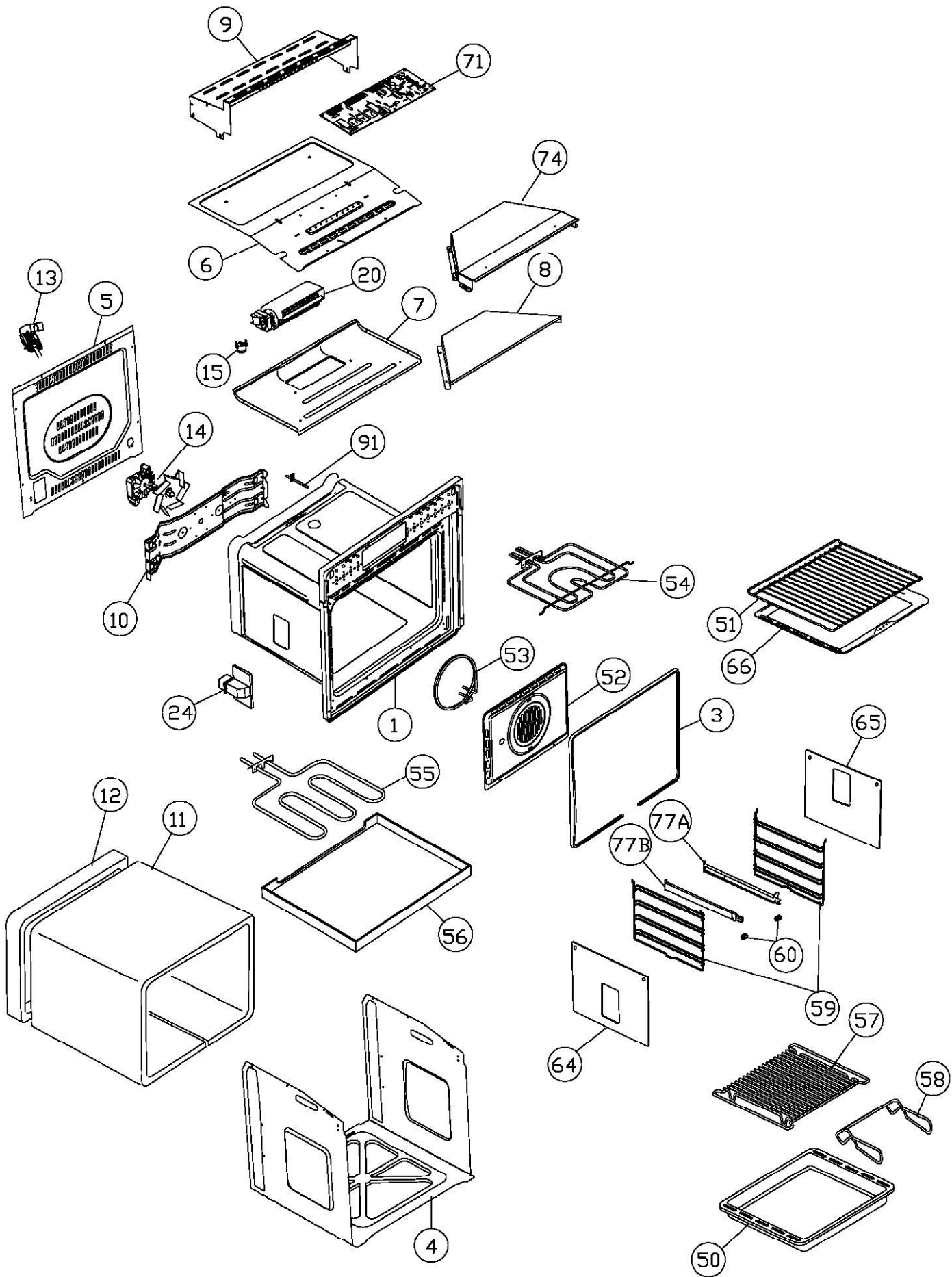


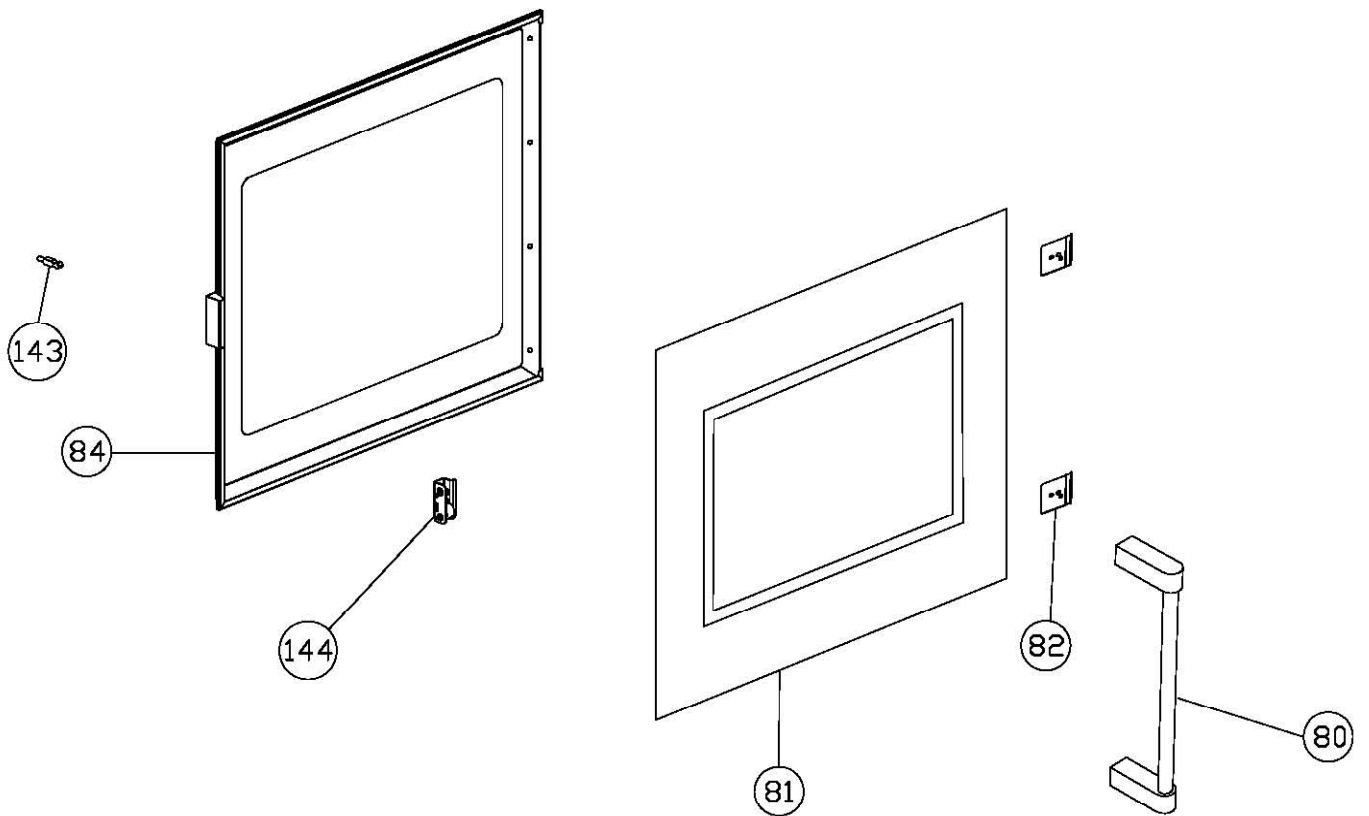
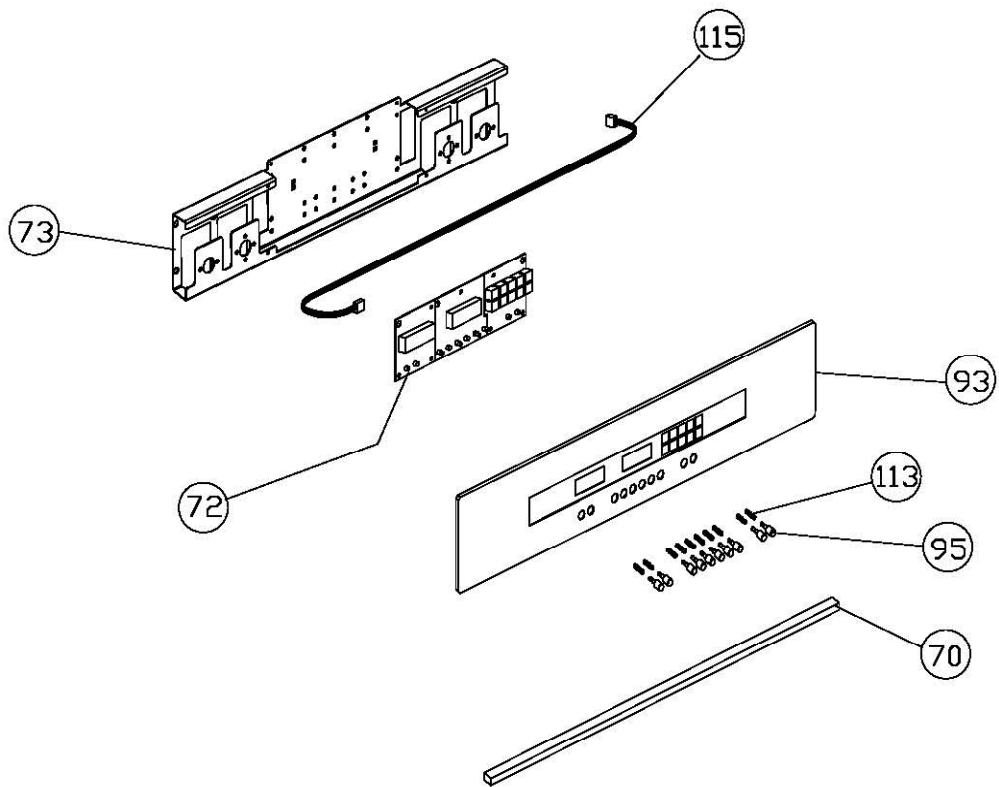
C2351SS

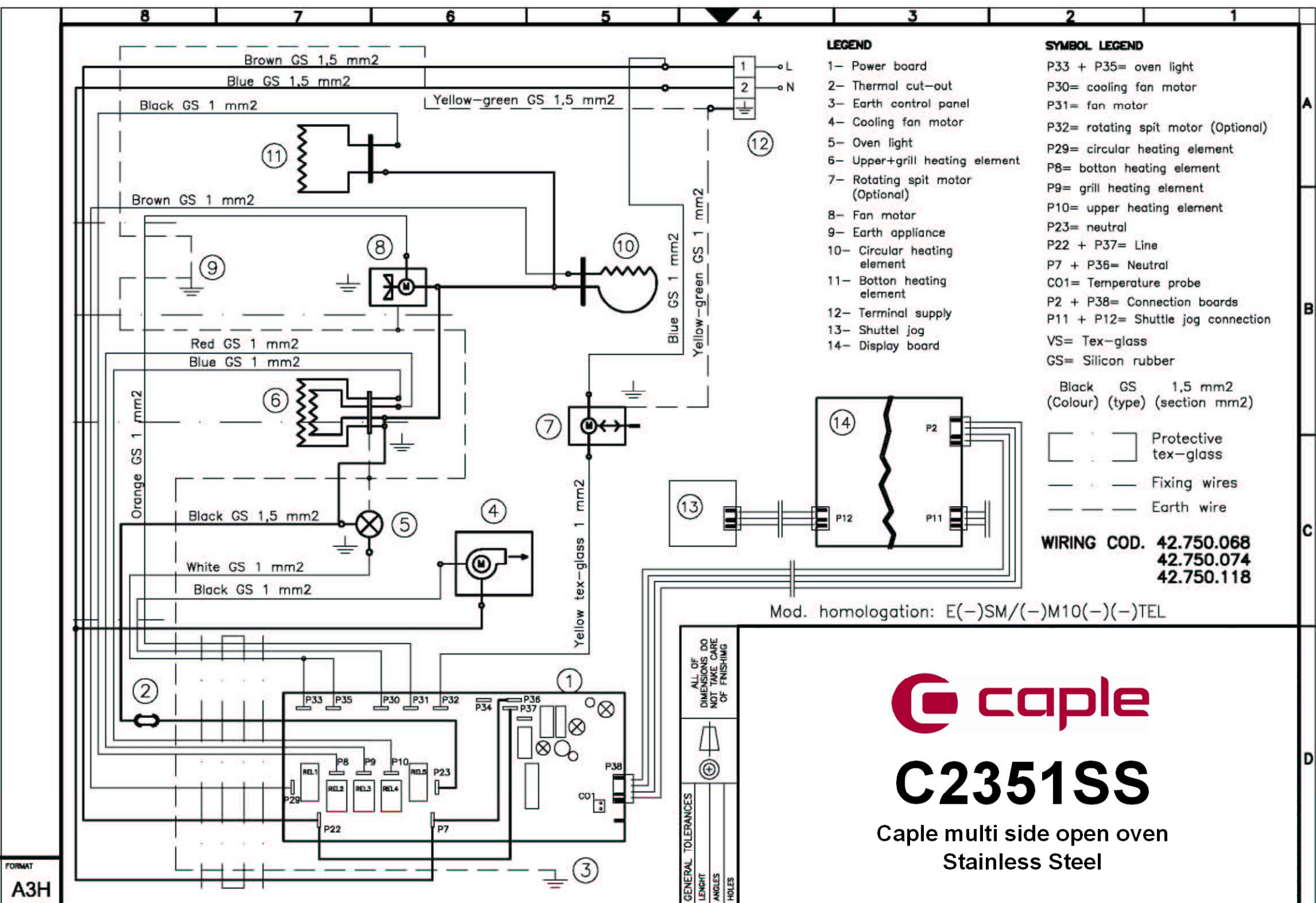
**Caple single multi function oven
Stainless Steel**



TECHNICAL INFORMATION







LEGEND

- 1- Power board
- 2- Thermal cut-out
- 3- Earth control panel
- 4- Cooling fan motor
- 5- Oven light
- 6- Upper+grill heating element
- 7- Rotating spit motor (Optional)
- 8- Fan motor
- 9- Earth appliance
- 10- Circular heating element
- 11- Bottom heating element
- 12- Terminal supply
- 13- Shuttle jog
- 14- Display board

SYMBOL LEGEND

- P33 + P35= oven light
- P30= cooling fan motor
- P31= fan motor
- P32= rotating spit motor (Optional)
- P29= circular heating element
- P8= bottom heating element
- P9= grill heating element
- P10= upper heating element
- P23= neutral
- P22 + P37= Line
- P7 + P36= Neutral
- CO1= Temperature probe
- P2 + P38= Connection boards
- P11 + P12= Shuttle jog connection
- VS= Tex-glass
- GS= Silicon rubber

- Black GS 1,5 mm2 (Colour) (type) (section mm2)
- Protective tex-glass
- Fixing wires
- Earth wire

**WIRING COD. 42.750.068
42.750.074
42.750.118**

Mod. homologation: E(-)SM/(-)M10(-)(-)TEL

FORMAT
A3H

ALL OF DIMENSIONS DO NOT TAKE CARE OF FINISHING

GENERAL TOLERANCES
LENGTH
ANGLES
HOLES



C2351SS

Cable multi side open oven
Stainless Steel