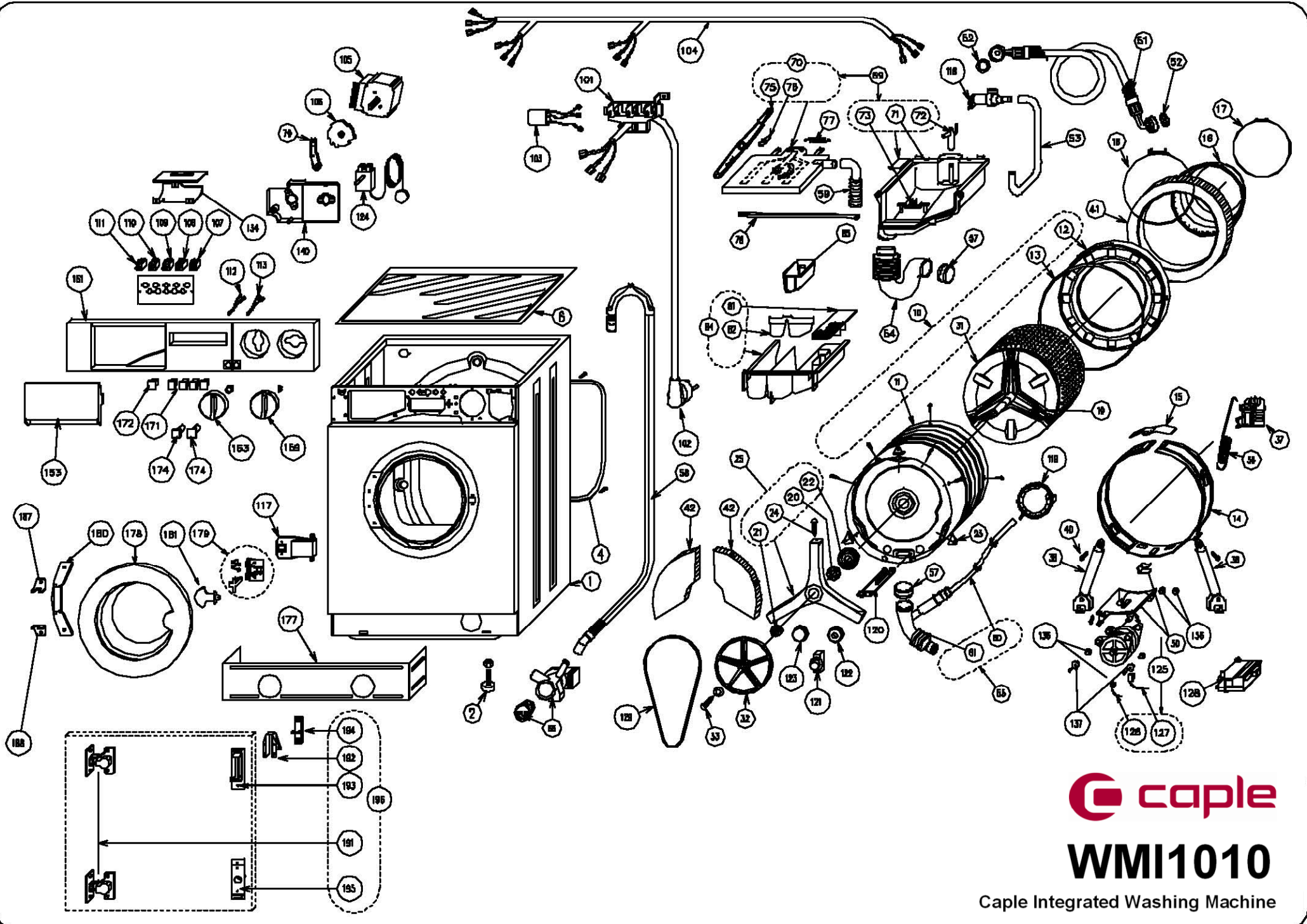




WMI1010

Caple Integrated Washing Machine

TECHNICAL INFORMATION




caple

WMI1010

Caple Integrated Washing Machine

 caple	Part Ref	Key	Description
WMI1010	36201900R	1	CABINET (INTEGREE)
WMI1010	35930100	2	FOOT
WMI1010	36209100SL	6	COVER
WMI1010	36197000	10	TUB (SERVICE) 54/1000
WMI1010	36055900SL	11	TUB
WMI1010	36053200SL	12	TUB FRONT DISC
WMI1010	36053300	13	RING GASKET
WMI1010	36053400SL	14	TANK BLANK
WMI1010	36053500	15	TUB BLANK CLOSURE
WMI1010	35951700	16	PORTHOLE GASKET
WMI1010	36160200	17	RING GASKET
WMI1010	36013500	18	DRUM GASKET FIXING RING
WMI1010	36040700	19	COUNTERSHAFT CROSS
WMI1010	29169890	20	BEARING SL
WMI1010	29169790	21	BEARING SL
WMI1010	36047700	22	SEAL RING
WMI1010	36054100	23	SMALL PLATE FOR PACKING SPACER
WMI1010	38811600	24	SCREW TE M10X26
WMI1010	36084100	25	BEARING SUPPORT
WMI1010	36053800	30	MOTOR HOUSING
WMI1010	36073000SL	31	DRUM 800/1000 (54CM)
WMI1010	36051500	32	DRIVEN PULLEY
WMI1010	38811400	33	SCREW TE M8X25
WMI1010	36304000	36	MAINSRING
WMI1010	36291600	37	SPRING SUPPORT
WMI1010	36427800	38	TUB SHOCK ABSORBER
WMI1010	38811500	40	SCREW TE M8X45
WMI1010	36501600	41	FRONT COUNTER WEIGHT
WMI1010	36222200	42	REAR COUNTER WEIGHT KIT
WMI1010	35389500	51	WATER INLET HOSE
WMI1010	35472500	51	WATER INLET HOSE
WMI1010	38815900	52	WATER INLET HOSE GASKET
WMI1010	36064900	53	WATER INLET PIPE
WMI1010	36054800	54	SOAP DRAWER SLEEVE
WMI1010	36255400	55	AIR PRESSURE BELL TUBE
WMI1010	36464700	55.01	AIR PRESSURE BELL TUBE
WMI1010	36055000	57	RING NUT FOR SLEEVE FIXING
WMI1010	36059800	58	DRAIN TUBE
WMI1010	36051700	59	STEAM SLEEVE
WMI1010	36162900	60	AIR PRESSURE BELL
WMI1010	36452700	60.01	AIR PRESSURE BELL
WMI1010	36192500	61	DRUM/PUMP DRAIN TUBE
WMI1010	36255400	61.01	AIR PRESSURE BELL TUBE
WMI1010	49569900	66	SELCLEANING DRAIN PUMP
WMI1010	36086601	69	SOAP DISP. COMPARTMENT H/C
WMI1010	35887700	70	PROTECTION FOR SOAP DISP.COMP.
WMI1010	36805200	70	SOAP DRAWER COVER
WMI1010	36004300	77	BALANCING SPRING
WMI1010	36059200	78	DISTRIBUTING STAF NOZZLE
WMI1010	36059300	79	TRACER POINT
WMI1010	36629400	84	SOAP DRAWER
WMI1010	36164500	85	LIQUID SOAP DRAWER
WMI1010	30427300	99.01	EXPLODED VIEW

 cable	Part Ref	Key	Description
WMI1010	36167000	99.02	CIRCUIT DIAGRAM
WMI1010	36167100	99.03	TOPOGRAPHIC DIAGRAM
WMI1010	35971600	99.04	TIMER DIAGRAM
WMI1010	35695000	99.05	ABBREVIATE SCHEME CHART
WMI1010	36078801	99.08	INSTRUCTION MANUAL
WMI1010	29329950	99.99	TEARING RIVET
WMI1010	29343750	99.99	RIVETS D.8
WMI1010	35888000	99.99	DRUM RIVET
WMI1010	36133800	99.99	MAGNET KIT FOR PORTHOLE
WMI1010	49503400	101	TERMINAL BORD
WMI1010	49557701	102	MAIN CABLE UK
WMI1010	49557300	103	ANTIJAMMING FILTER
WMI1010	49566600	105	TIMER 0667/3/0.12
WMI1010	49566601	105.01	TIMER 0667/3/0.12
WMI1010	36060700	106	SOAP DRAWER CAM
WMI1010	49564000	107	MODULAR BUTTON SET 2C/N.A-N.A
WMI1010	49563800	108	MODULAR BUTTON SET 1C/DEV.
WMI1010	49564100	109	MODULAR BUTTON SET 2C/DEV-DEV
WMI1010	49563600	110	MODULAR BUTTON SET 1C/NC.
WMI1010	29286590	112	WARNING LIGHT
WMI1010	29286290	112.01	WARNING LIGHT
WMI1010	29286390	112.02	WARNING LIGHT
WMI1010	29286790	112.03	WARNING LIGHT
WMI1010	29286890	112.04	WARNING LIGHT
WMI1010	29286990	112.05	WARNING LIGHT
WMI1010	29286990	113	WARNING LIGHT
WMI1010	49538100	117	PORTHOLE SAFETY DEVICE
WMI1010	49559700	118	1 WAY SOLENOID VALVE
WMI1010	49565200	119	PRESSURE SWITCH 2 LEVELS
WMI1010	49570600	119.01	PRESSURE SWITCH
WMI1010	49560400	120	HEATING ELEMENT 2500W 240V
WMI1010	49561000	121	THERMOSTAT CAP
WMI1010	35000300	122	THERMOSTAT CAP GASKET
WMI1010	49558100	124	ADJUSTABLE THERMOSTAT
WMI1010	49573300	124.01	THERMOSTAT
WMI1010	49558700	125	UNIVERSAL MOTOR
WMI1010	49527000	126	SLIDING CONTACT
WMI1010	49527100	126	SLIDING CONTACT
WMI1010	49528800	127	TACHO GENERATOR
WMI1010	49528900	127	TACHO GENERATOR
WMI1010	49569800	128	DIGITAL MODULE
WMI1010	36060200	129	U-BELT
WMI1010	36063700	135	PROTECTION FOR PUSH BUTTON SET
WMI1010	36055100	136	BUSH FOR MOTOR FIXING
WMI1010	36095600	137	WASHER FOR MOTOR FIXING
WMI1010	36058100	140	TIMER/THERMOSTAT SUPPORT
WMI1010	36627600	151	BOARD PANEL BI 1000X
WMI1010	36660000	153	SOAP DRAWER HANDLE
WMI1010	35893000	159	THERMOSTAT KNOB
WMI1010	35892900	163	TIMER KNOB
WMI1010	35845500	171	PUSH BUTTON
WMI1010	35569100	172	SINGLE TAP FOR BUTTON HOLE
WMI1010	29349380	174	RED WARNING LIGHT LENS

 cable	Part Ref	Key	Description
WMI1010	29350180	174.01	GEMMA L.SPIA ROSSO OPALE(2282)
WMI1010	35587400SL	177	MOLDING PANEL
WMI1010	36015700	178	PORTHOLE WITH HANDLE
WMI1010	36015900	179	PORTHOLE HOOK KIT (5 PIECES)
WMI1010	36000800	180	PORTHOLE HINGE
WMI1010	36001200	181	PORTHOLE HANDLE
WMI1010	36001201	181.01	PORTHOLE HANDLE
WMI1010	36004800	187	HINGE FIXING UPPER PLATE
WMI1010	36004900	188	HINGE FIXING LOWER PLATE
WMI1010	35932300	191	DOOR HINGE
WMI1010	29309090	192	DOOR HOOK
WMI1010	35933700	193	DOOR HOOKLET SUPPORT
WMI1010	35986100	194	PORTHOLE HOOK
WMI1010	35986101	194.01	DOOR HOOK JACK
WMI1010	35933900	195	DOOR SPACER
WMI1010	35945000SL	196	CONTAINER BAGLET LOCK PARTS
WMI1010	36700800	196.01	CONTAINER BAGLET LOCK PARTS
WMI1010	36078802	9,908.01	INSTRUCTION MANUAL
WMI1010	36078803	9,908.02	INSTRUCTION MANUAL