



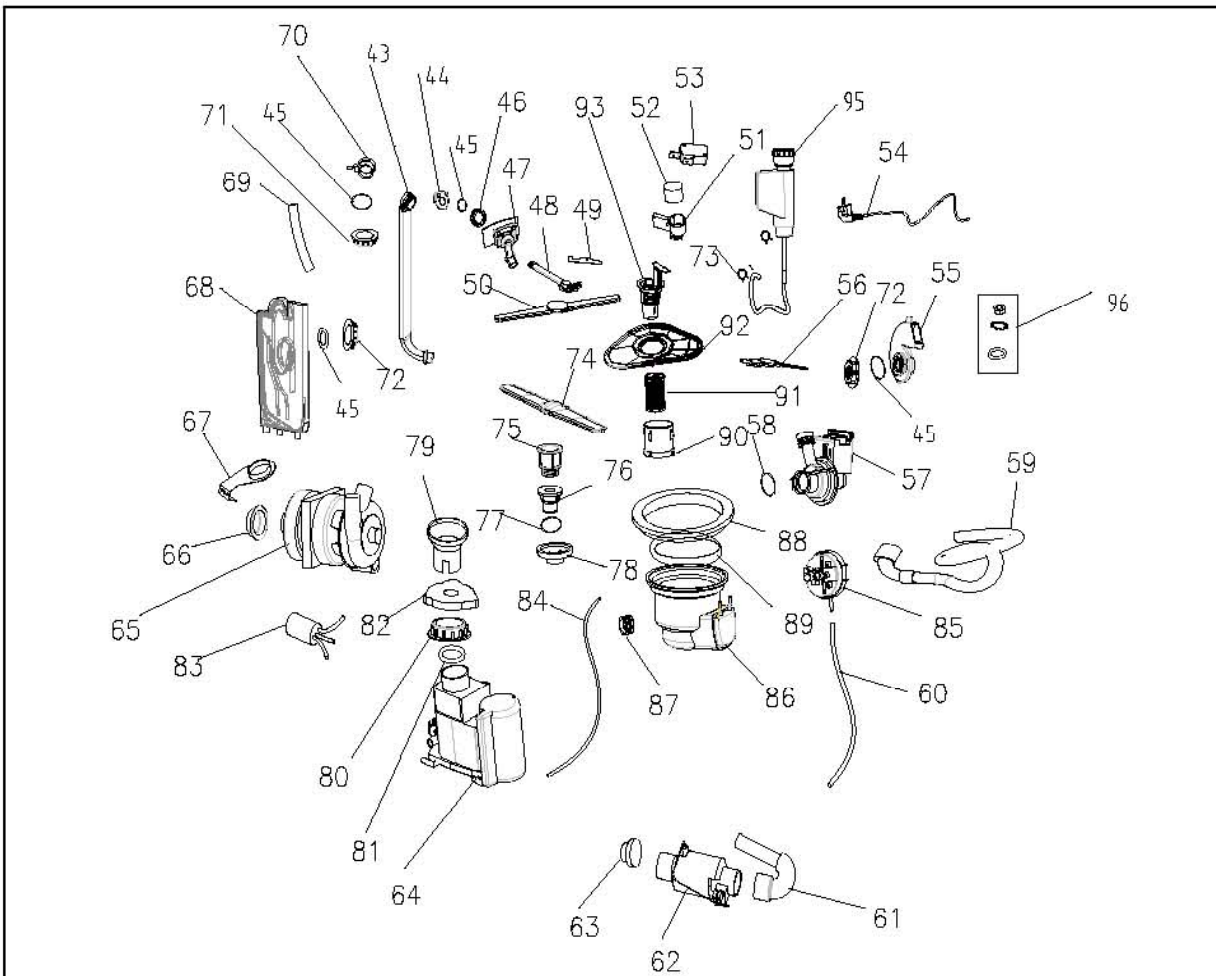
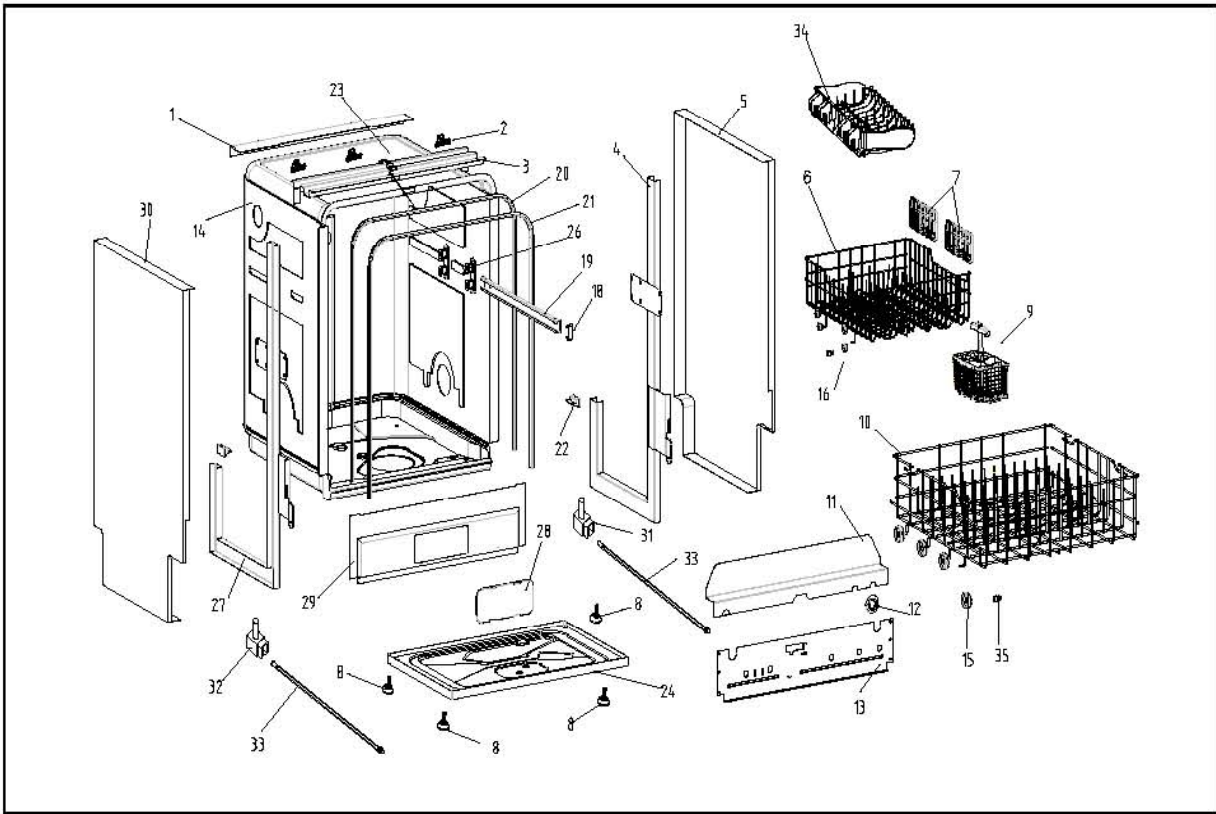
DI455DL

**Caple Deluxe 45cm
Integrated Dishwasher**

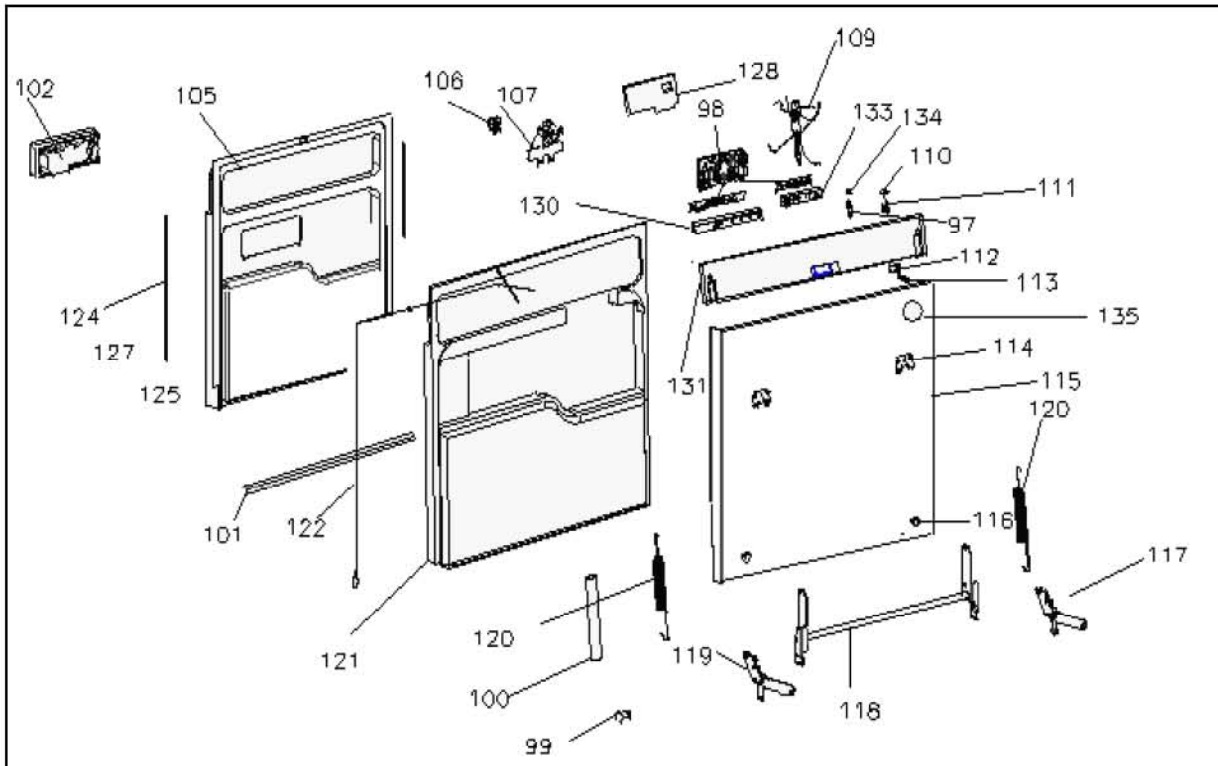


TECHNICAL INFORMATION

Exploded View



Exploded View





Dishwasher

Model:Di455DL

Parts List

| NO. | Name of part | Part Specialized code | QTY. | Remark |
|-----|---|-----------------------|------|--------|
| 1 | Upper rear crosspiece | 0120103082 | 1 | |
| 2 | Main screw for self threading screw 3.5 | 0120200057 | 3 | |
| 3 | Upper front crosspiece | 0120103079 | 1 | |
| 4 | Right upright assembly | 0120105717 | 1 | |
| 5 | Painted right side pannel | 0120106819 | 1 | |
| 6 | Upper basket | 0120201766 | 1 | |
| 7 | Filter for upper basket | 0120201235 | 2 | |
| 8 | Adjustable foot | 0120600009 | 2 | |
| 9 | Cutlery basket | 0120803156 | 1 | |
| 10 | Lower basket | 0120201765 | 1 | |
| 11 | Rear intermediate crosspiece | 0120103081 | 1 | |
| 12 | Drain hose stop | 012G2160204 | 1 | |
| 13 | Lower rear crosspiece for acquostop | 0120103080 | 1 | |
| 14 | Insulated tub assembly | 0120103084 | 1 | |
| 15 | Wheel for lower basket | 0120200964 | 8 | |
| 16 | Wheel for high basket | 0120200963 | 8 | |
| 18 | Basket rail stop | 0120200967 | 4 | |
| 19 | Mobile rail for basket | 012G1020069 | 2 | |
| 20 | Tub gasket | 0120300395 | 1 | |
| 21 | Support frame for tub gasket | 0120103088 | 1 | |
| 22 | Upright small block | 0120200124 | 2 | |
| 23 | Hooking | 012G2150037 | 1 | |
| 24 | Tray | 0120106846 | 1 | |
| 26 | Rail support assembly | 0120200966 | 4 | |
| 27 | Left upright assembly | 0120105716 | 1 | |
| 28 | Cover for front crosspiece | 0120200065 | 1 | |
| 29 | Lower front crosspiece | 0120103083 | 1 | |
| 30 | Painted left side pannel | 0120106818 | 1 | |
| 31 | Right threaded tapered gear | 0120800223 | 1 | |
| 32 | Left threaded tapered gear | 0120800224 | 1 | |
| 33 | Tie rod for foot adjusting | 0120100051 | 2 | |
| 34 | knife rest | 0120201260 | 1 | |
| 35 | Wheel support pin | 0120200965 | 16 | |
| 43 | Outer duct | 012G2160236 | 1 | |
| 44 | Basket guide housing | 0120201007 | 1 | |
| 45 | O-Ring | 012G4050157 | 3 | |
| 46 | Ring nut for outer duct fastenig | 0120203186 | 1 | |
| 47 | Feeding dispenser assembly | 0120801832 | 1 | |
| 48 | Water diversion pipe | 0120201011 | 1 | |
| 49 | Pin for inner duct hooking | 0120201010 | 1 | |
| 50 | Upper sprayer assembly | 0120201221 | 1 | |
| 51 | Support for float | 0120202056 | 1 | |
| 52 | Float for Acquastop | 0120503119 | 1 | |
| 53 | Micro switch Elbi Type S3 | 012G6050040 | 1 | |
| 54 | Power supply cable | 0124000096 | 1 | |
| 55 | Air outlet | 012G2160197 | 2 | |
| 56 | Thermo limiter assembly | 0120800379 | 1 | |
| 57 | Drain pump | 012G5040004 | 1 | |



Dishwasher

Model:Di455DL

Parts List

| NO. | Name of part | Part Specialized code | QTY. | Remark |
|-----|---------------------------------------|-----------------------|------|--------|
| 58 | O-Ring | 012G4050158 | 1 | |
| 59 | Drain hose assembly | 012G2140061 | 1 | |
| 60 | Pressure switch tube | 012G2140067 | 1 | |
| 61 | Coupling (column / heating element) | 0120200225 | 1 | |
| 62 | Heater assembly | 0120800355 | 1 | |
| 63 | Water intake hose (heating element) | 0120200220 | 1 | |
| 64 | Water softener | 012G9380537 | 1 | |
| 65 | Washing pump assembly | 0124000051 | 1 | |
| 66 | Vibration-proof ring motor | 012G4050159 | 1 | |
| 67 | Motor bracket assembly | 012G9350006 | 1 | |
| 68 | Breather assembly | 012G2160196 | 1 | |
| 69 | PVC tube + 40% nitrilic rubber | 0120300644 | 1 | |
| 70 | Connection for 3rd sprayer | 012G2160200 | 1 | |
| 71 | 3rd sprayer | 0120201003 | 1 | |
| 72 | Breather ring nut | 0120201008 | 1 | |
| 73 | tube clamp | 012G1040022 | 2 | |
| 74 | Lower sprayer | 012G1450620 | 1 | |
| 75 | Lower sprayer column | 0120201005 | 1 | |
| 76 | Lower sprayer base | 0120201004 | 1 | |
| 77 | O-type sealing ring | 012G4050153 | 1 | |
| 78 | Lower sprayer base fixing piece | 012G2160193 | 1 | |
| 79 | Salt dispenser funnel | 0120201753 | 1 | |
| 80 | Softener ring nut | 012G2150042 | 1 | |
| 81 | Water softener sealing ring | 012G4050236 | 1 | |
| 82 | Cover of salt dispenser port assembly | 0120802037 | 1 | |
| 83 | Electric wave filter | 0120400001 | 1 | |
| 84 | Connection pipe | 012G4050244 | 1 | |
| 85 | 1-level pressure switch | 012G6050031 | 1 | |
| 86 | Water gutter | 012G2160191 | 1 | |
| 87 | Rubber coupling | 012G4050152 | 2 | |
| 88 | Ring nut for cup fastening | 0120201292 | 1 | |
| 89 | Cup gasket | 012G4050151 | 1 | |
| 90 | Microfilter (polyesthere) | 012G1040014 | 1 | |
| 91 | Cylindric stainless steel filter | 0120200949 | 1 | |
| 92 | Stainless steel extractable filter | 012G1040012 | 1 | |
| 93 | Extractable glass filter | 0120201009 | 1 | |
| 95 | Acquastop device | 012G9381036A | 1 | |
| 96 | Elasticity retainer | 0120600060 | 2 | |
| 97 | Red indicator | 0124000324 | 1 | |
| 98 | control panel | 0124000223 | 1 | |
| 99 | Hinge shaft | 012G8080007 | 4 | |
| 100 | Door spring Cover | 0120200048 | 2 | |
| 101 | Door gasket | 012G4050172 | 1 | |
| 102 | Detergent dispenser | 0124000215 | 1 | |
| 105 | Inner Door | 0120103094 | 1 | |
| 106 | Door switch | 0120800356 | 1 | |
| 107 | Switch mechanism assembly | 0120800357 | 1 | |
| 109 | Control cable | 0124000224 | 1 | |



Dishwasher

Model:Di455DL

Parts List

| NO. | Name of part | Part Specialized code | QTY. | Remark |
|-----|-------------------------------|-----------------------|------|--------|
| 110 | Power Key-press | 0120200226 | 1 | |
| 111 | Power supply switch | 012G9370091 | 1 | |
| 112 | Springs adjusting small block | 0120100042 | 2 | |
| 113 | Spring adjusting screw | 0120600197 | 2 | |
| 114 | Block hooking bracket | 0120100052 | 2 | |
| 115 | Outer door | 0120103089 | 1 | |
| 116 | Rubber | 0120300014 | 2 | |
| 117 | Left hinge articulation | 012G9380558 | 1 | |
| 118 | Complete hinge assembly | 0120800660 | 1 | |
| 119 | Right hinge articulation | 012G9380559 | 1 | |
| 120 | Door spring | 0120100047 | 2 | |
| 122 | Adjustable cable | 0120103154 | 2 | |
| 124 | Door gasket guard strip | 012G2140094 | 2 | |
| 128 | control cover | 0120200244 | 1 | |
| 130 | Left led card support | 0120300394 | 1 | |
| 131 | Dashboard | 0120203341 | 1 | |
| 133 | Right led support protection | 0120300393 | 1 | |
| 135 | Sealed plug | 0120300304 | 2 | |



Dishwasher

Service Manual



Models:
Di455DL

Features

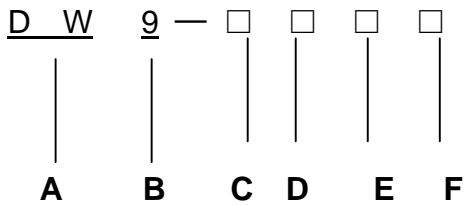
- B grade for energy consumption of European standard
- Electronic control, delay washing
- Three-spraying, higher cleaning ratio
- Water softener for descaling
- Wuper-capacity for 9 settings

Contents

| | |
|--|-------|
| 1. Product Code illumination and Series introduction | 3 |
| 2. Features..... | 4 |
| 3. Net Dimension..... | 5 |
| 4. Installation and Accessory Parts..... | 5 |
| 5. Parts and Functions..... | 6-11 |
| 6. Function Schedule..... | 12 |
| 7. Program Diagram..... | 13 |
| 8. Maintenances Service and Trouble Shooting..... | 14-19 |
| 9. Circuit Diagram..... | 20 |

1.Product Code Illumination and Series Introduction

Model Identification



- A:** Abbreviation of dishwasher
- B:** Code name of Nominal capacity
- C:** Series of factory design
- D:** Freestanding/built –in/semi-built-in
- E:** Mechanical/Electronic
- F:** The second series of factory design code name described/outer side material

Examples:

DW9-CBE0

It represents automatic spraying electronic built –in dishwasher, the cavity capacity is 9 standard sets.

2.Features

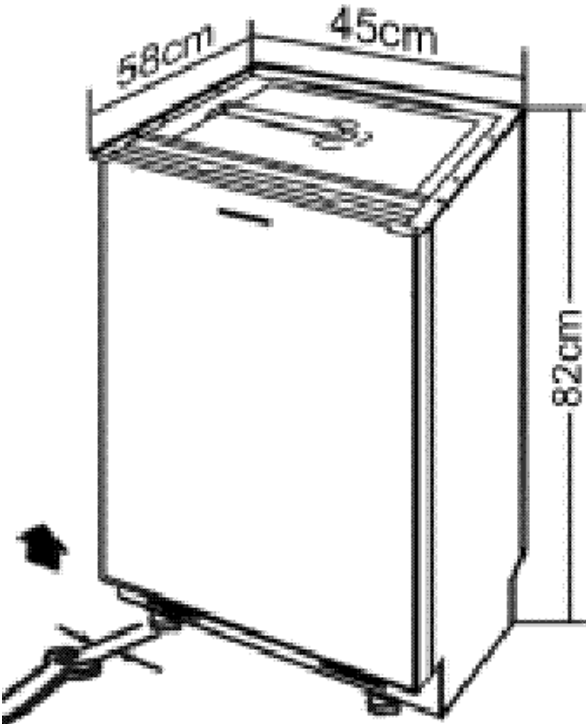
2.1Prewashing

It may avoid the peak of using electricity effectively, saving electricity consumption.

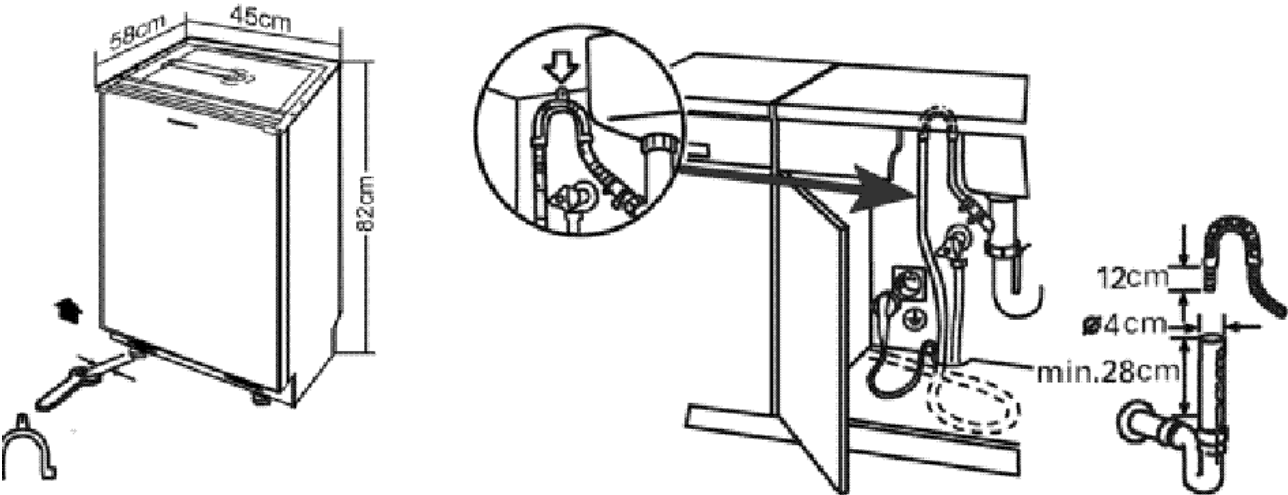
2.2Half load washing

Half loading fashion which the upper-rack only mode is available get saving electricity and water consumption, if the dishwares is not too much.

3.Net dimension



4.Installation and Accessory Parts



5.1 Positioning the Appliance

Position the appliance in the desired location. The back should rest against the wall behind it, and the sides, along the adjacent cabinets or wall. The dishwasher is equipped with water supply and drain hoses that can be positioned on the right or the left to facilitate proper installation.

5.2 Leveling the Appliance

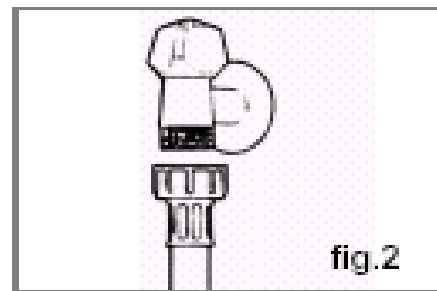
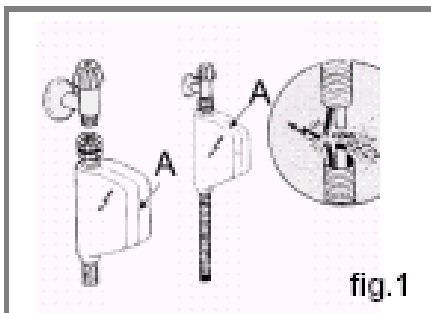
Once the appliance is positioned, adjust the feet (screw them in or out) to level the dishwasher. In any case, the appliance should not be inclined more than 2°. If the appliance is level, it will help ensure proper performance.

5.3 Cold Water Connection

Connect the cold water supply hose to a threaded 3/4" (gas) connector and make sure that it is fastened tightly in place (see Fig 2).

Some models are fitted with an "AquaStop" water supply hose (see fig.1) in which the small filter is already housed in the threaded end.

If the water pipes are new or have not been used for an extended period of time, let the water run to make sure that the water is clear and free of impurities. If this precaution is not taken, there is a risk that the water inlet can get blocked and damage the appliance.



5.4 Hot Water Connection

The water supply to the appliance can also be connected to the house's hot water line (centralised system, heating system), as long as it does not exceed a temperature of 60°C.

In this case, the wash cycle time will be shortened by about 15 minutes and the wash efficiency slightly reduced.

The connection must be made to the hot water line following the same procedures as those for the connection to the cold water line.

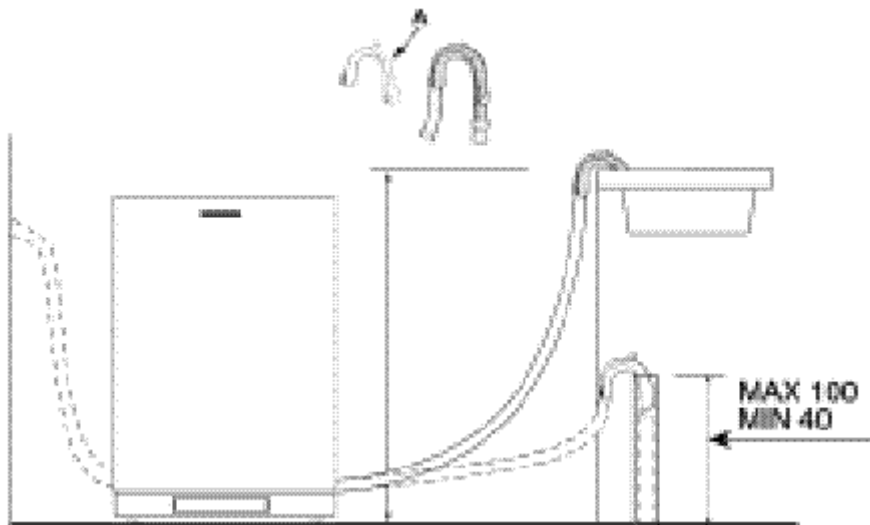
5.5 Anti-Flooding Protection

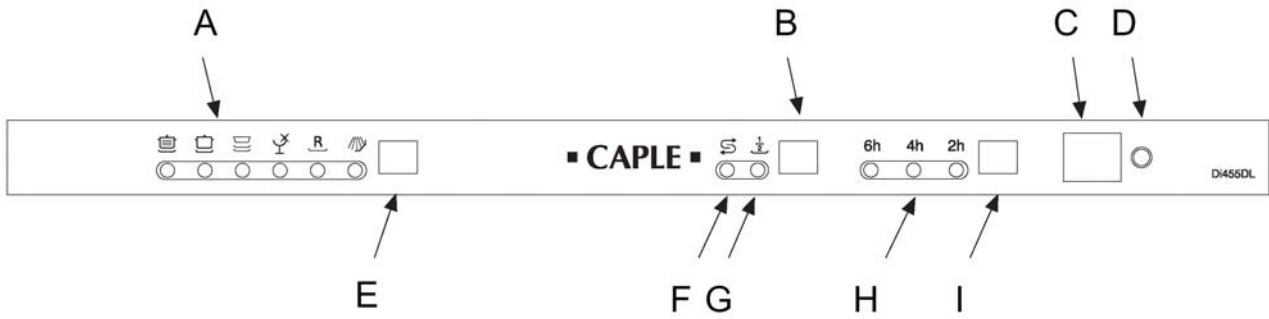
The dishwasher is equipped with a system that stops the supply of water in the event of a problem with the water supply hose, or leaks within the unit, in order to prevent damage to your home. If for any reason the box containing the electrical components happens to get damaged, remove the plug for the appliance from the socket immediately. In order to guarantee that the anti-flooding feature operates properly, the "A" box with water supply hose must be attached to the water supply tap as shown in Fig .1. No other type of connection is acceptable. The water supply hose must not, under any circumstances, be cut, as it contains electrical parts which are live. If the length of the hose is not adequate to make

a proper connection, the hose must be replaced with one which is long enough. This hose is available upon request from specialised retailers and service centers.

5.6 Drain Hose Connection

Insert the drain hose into a drain pipe with a minimum diameter of 4cm, or let it run into the sink, making sure to avoid bending or crimping it. Use the special plastic support that comes with the appliance (see Fig.2). The free end of the hose must be at a height between 40 and 100 cm and must not be immersed in water.





A Cycle indicator light

B "HALF LOAD" Button

C ON-OFF Button

D ON-OFF Light

E Cycle select button

F Low salt indicator light

G "HALF LOAD" indicator light

H Delay indicator light

I Delay select button

Salt

The hardness of the water varies from place to place. If hard water is used in the shwasher, deposits will form on the dishes utensils.

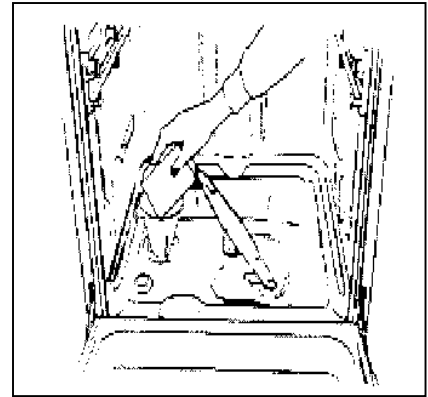
The appliance is equipped with a special softener that uses a salt specifically designed to eliminate lime and minerals from the water.

Loading the Salt into the Softener

Always use salt intended for use with dishwashers.

The salt container is located beneath the lower rack and should be filled as follows:

- Remove the lower rack and then unscrew and remove the cap from the salt container;
- If you are filling the container for the first time, fill it with water;
- Place the end of the funnel(supplied) into the hole and introduce about 2 kg of salt. It is normal for a small amount of water to come out of the salt container.
- Carefully screw the cap back on.



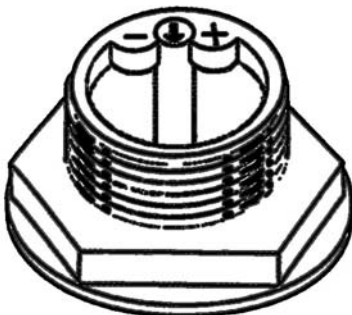
The salt container must be filled when the "low salt" indicator light (located on the control panel) comes on.

To prevent the formation of rust, load the salt just before beginning a wash cycle.

Adjusting Salt Consumption

The dishwasher is designed to allow for adjusting the amount of salt consumed based on the hardness of the water used. This is intended to optimize and

customize the level of salt consumption so that it remains at a minimum. Your local Water Board can supply the degree of hardness of the water in your area.



| Water Hardness | | | | | |
|------------------|---------|-----------|-------------------|--------------------------------|-----------------------|
| Clarke detergent | ° dH | mmol/l | Selector position | Salt consumption (Grams/cycle) | Autonomy (cycles/2kg) |
| 0 ÷ 14 | 0 ÷ 10 | 0 ÷ 1,7 | / | 0 | / |
| 14 ÷ 36 | 18 ÷ 44 | 1,8 ÷ 4,4 | "-" | 20 | 60 |
| 36 ÷ 71 | 45 ÷ 89 | 4,5 ÷ 8,9 | MED | 40 | 40 |
| >71 | >89 | >8,9 | "+" | 60 | 25 |

To adjust salt consumption, proceed as follows:

- Unscrew the cap from the salt container;
- There is a ring on the container with an arrow on it (see figure to the side), If necessary, rotate the ring in the anticlockwise

direction from the "-" setting towards the "+" sign, based on the hardness of the water being used.

It is recommended that adjustments be made in accordance with the following scheme:

Detergent

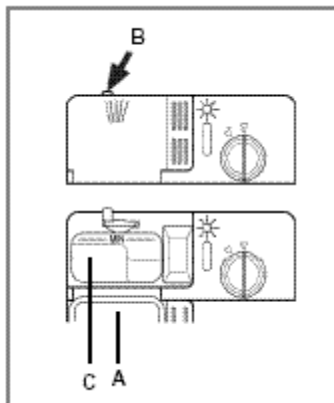
Detergent specifically intended for use with dishwashers must be used. The dispenser must be refilled before the start of each wash cycle following the instructions provided in the "Wash Cycle Table." The detergent dispenser is located on the inside panel the door.

Loading the detergent

To open the "A" cover on the dispenser, press the "B" button. The detergent for the wash cycle should be poured into the "C" compartment.

After the detergent has been placed in the dispenser, close the cover and press down until it clicks in place.

Notice: To facilitate closing the cover, remove any excess detergent on the edges of the dispenser.

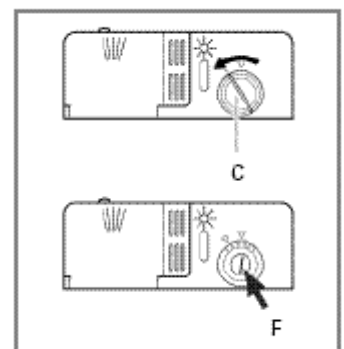


Rinse Aid

This product makes dishes sparkle and helps them to dry without spotting. The dispenser is located on the inside panel of the door and should be filled after every 80 wash cycle (or when the rinse aid indicator light comes on for those models with this feature).

The Rinse Aid

To open the dispenser, turn the "C" cap in the anti-clockwise direction and then pour in the rinse aid, making sure not to overfill. The amount of rinse aid used for each cycle can be regulated by turning the "F" dose adjuster, located beneath the "C" cap, with a screwdriver. There are 6 different settings; the normal dosage setting is 3.



Important

Proper dosage of the rinse aid improves drying.

If drops of water remain on the dishes or spotting occurs, the dosage adjuster should be turned to a higher setting.

If the dishes have white streaks, turn the dosage adjuster to a lower setting.

Before placing the dishes in the dishwasher, remove the larger food debris to prevent the filter from becoming clogged, which

results in reduced performance.

If the pots and pans have baked-on food that is extremely hard to remove, we recommend that they be allowed to soak before they are washed. This will eliminate the need for extra wash cycles. Pull out the rack to facilitate loading the dishwasher.

Before placing the dishes in the dishwasher, remove larger food particles to prevent the filter from becoming clogged, which results in reduced performance.

If the pots and pans have baked-on food that is extremely hard to remove, we recommend that they are soaked before washed. This will eliminate the need for extra wash cycles.

Pull out the rack to load the dishwasher.

How to use the lower rack

We recommend that you place the most difficult to clean items on the bottom rack: pots, pans, lids, serving dishes and bowls, as shown in the figure to the right.

It is preferable to place serving dishes and lids on the sides of the racks in order to avoid blocking the rotation of the top spray arm.

- Pots, serving bowls, etc. must always be placed face down.
- Deep pots should be slanted to allow the water to flow out.
- The silverware basket can not be doubled (see fig.A).
- Silverware should be placed in the silverware basket with the handles at the bottom; if the rack has side baskets, the spoons should be located individually into the appropriate slots. Especially long utensils should be placed in the horizontal position at the front of the upper rack.

How to use the upper rack

The upper rack is designed to hold more delicate and lighter dishware, such as glasses, cups and saucers, plates, small bowls and shallow pans (as long as they are not too dirty).

- Position the dishes and cookware so that they do not get moved by the spray of water.

The upper rack can be adjusted for height by using the knobs located on the sides of the rack itself (see fig.B).

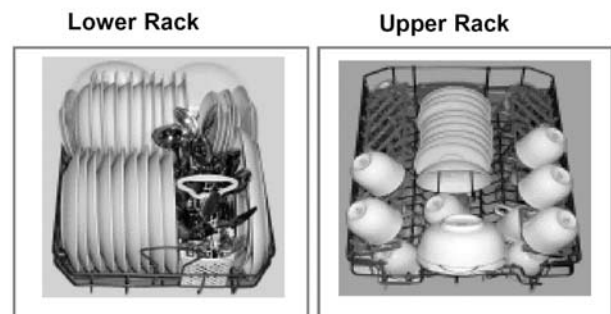
Shelf

Lean tall glasses and those with long stems against the shelf-not against other items to be washed.

Place glasses, cups and small bowls on the additional cup rack. The additional cup rack can be swivelled in or out as required (see fig.C).

Knife rack

The knife rack clips onto the side of the top basket, giving you the freedom to wash your large sharp knives separately and out of harm's way (see fig.D).



Load for 9 Standard Settings



fig.A

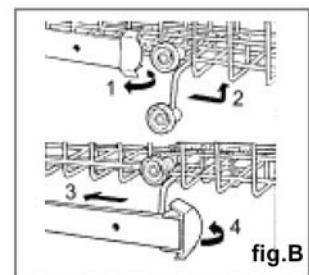


fig.B

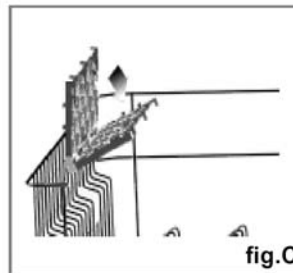


fig.C

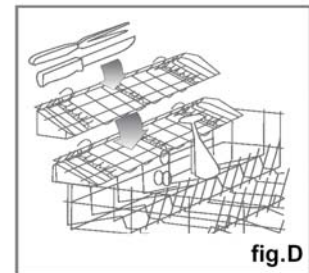
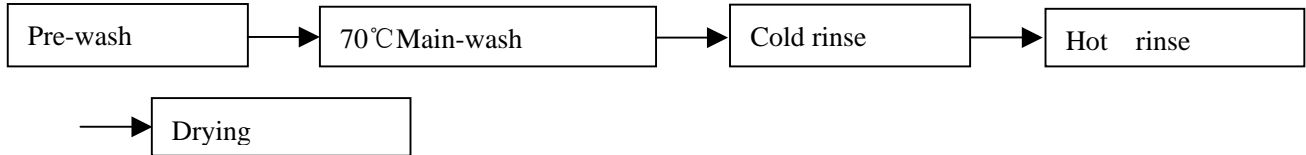


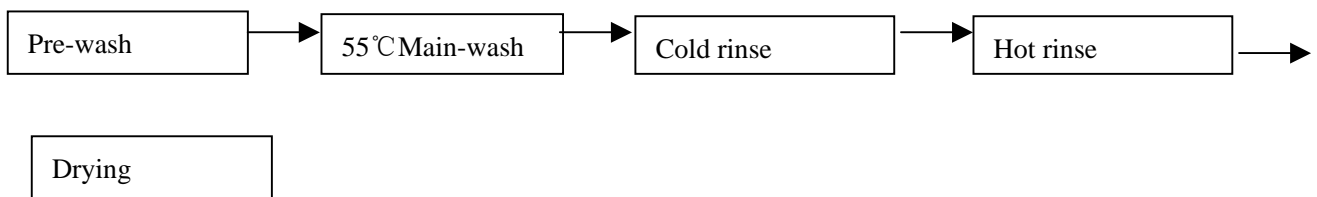
fig.D

6. Function Schedule

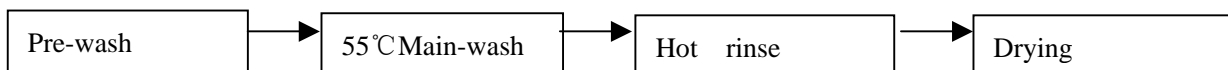
1. Heavy wash



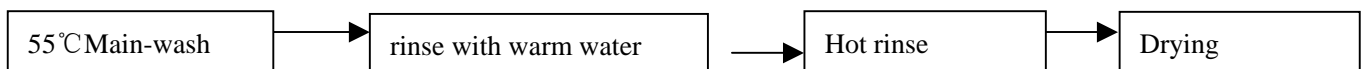
2. Normal wash



3. Light wash



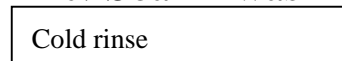
4. Glasses wash









5. Rapid wash



6. Soak wash



7. Program Diagram

| Cycle | Cycle Selection Information | Description of Cycle | Detergent | Rinse Aid |
|---|---|---|-----------|-----------|
|  Heavy Duty | Very dirty dishes, pots and pans. (Not to be used with delicate items) | Pre-wash with hot water. Extended wash at 70 °C. Rinse with cold water. Rinse with hot water. Drying. | 30g | ★ |
|  Normal Wash | Normal dirty dishes, pots and pans. Standard daily cycle. | Pre-wash use cold water. Extended wash at 55 °C. Rinse with cold water. Rinse with hot water. Drying. | 30g | ★ |
|  Light Wash (EN50242) | Normal dirty dishes, pots and pans without dried on residue. | Pre-wash with cold water. Extended wash at 50 °C. Rinse with hot water. Drying. | 30g | ★ |
|  Glassware | Economic, fast cycle to be used for items which are sensitive to higher. Run immediately after dishes are used. | Wash at 55 °C. Rinse with warm water. Hot rinse. Drying. | 15g | ★ |
|  Rapid Wash | Economic, fast cycle to be used to on not very dirty dishes right after they are used. No drying cycle. | Short wash at 40 °C. Cold rinse. | 15g | |
|  Soak | Pre-wash of dishes, pots and pans while waiting for the load to be completed after the subsequent meal. | Short cold wash to prevent food residue from drying on the dishes . | | |

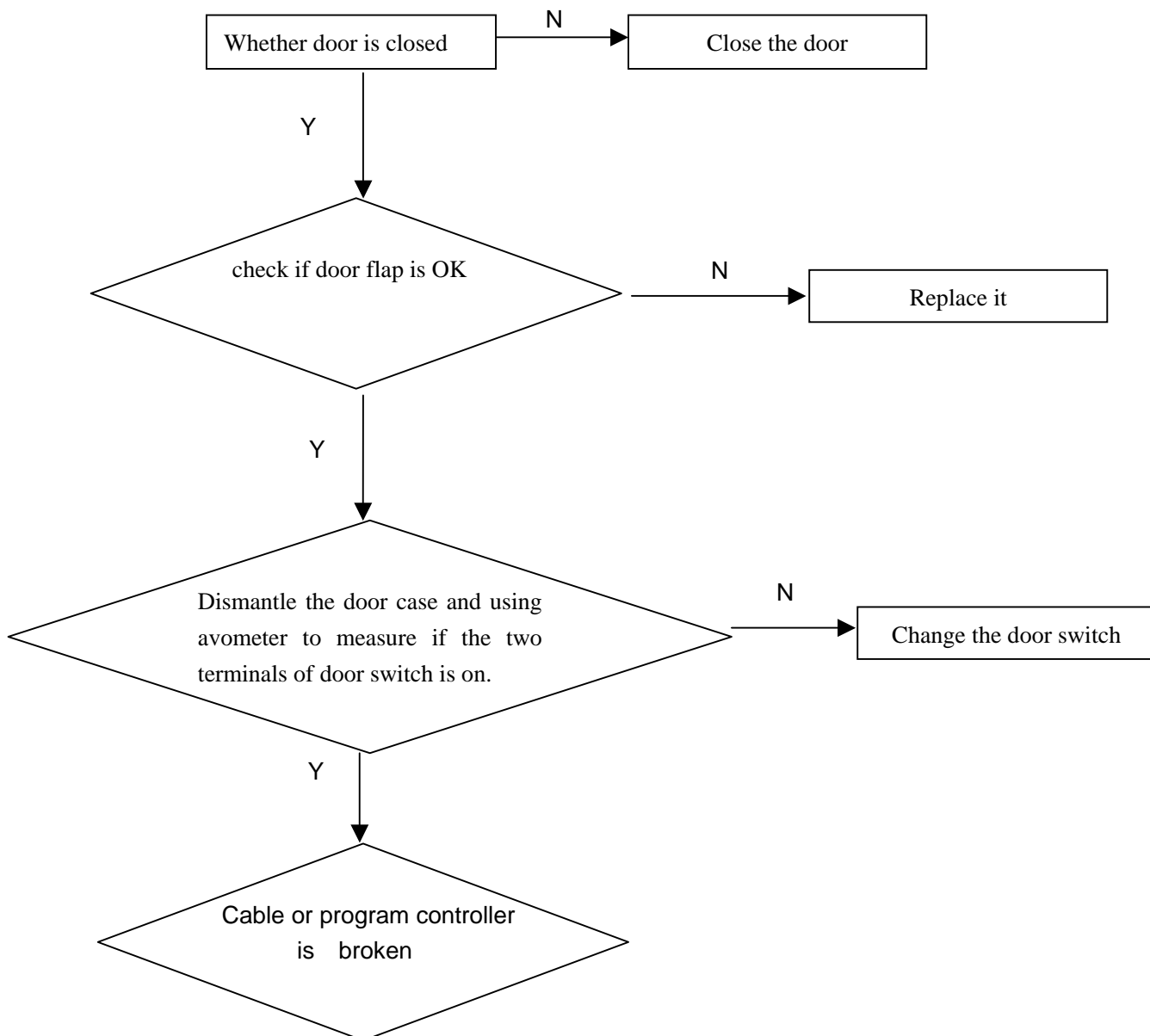
8.1 Maintenances Services

It may occur that the dishwasher does not function or does not function properly Before calling for assistance, let us see what can be done first :have you forgotten to press one of the buttons or to perform an essential operation?

8.2 Trouble Shooting

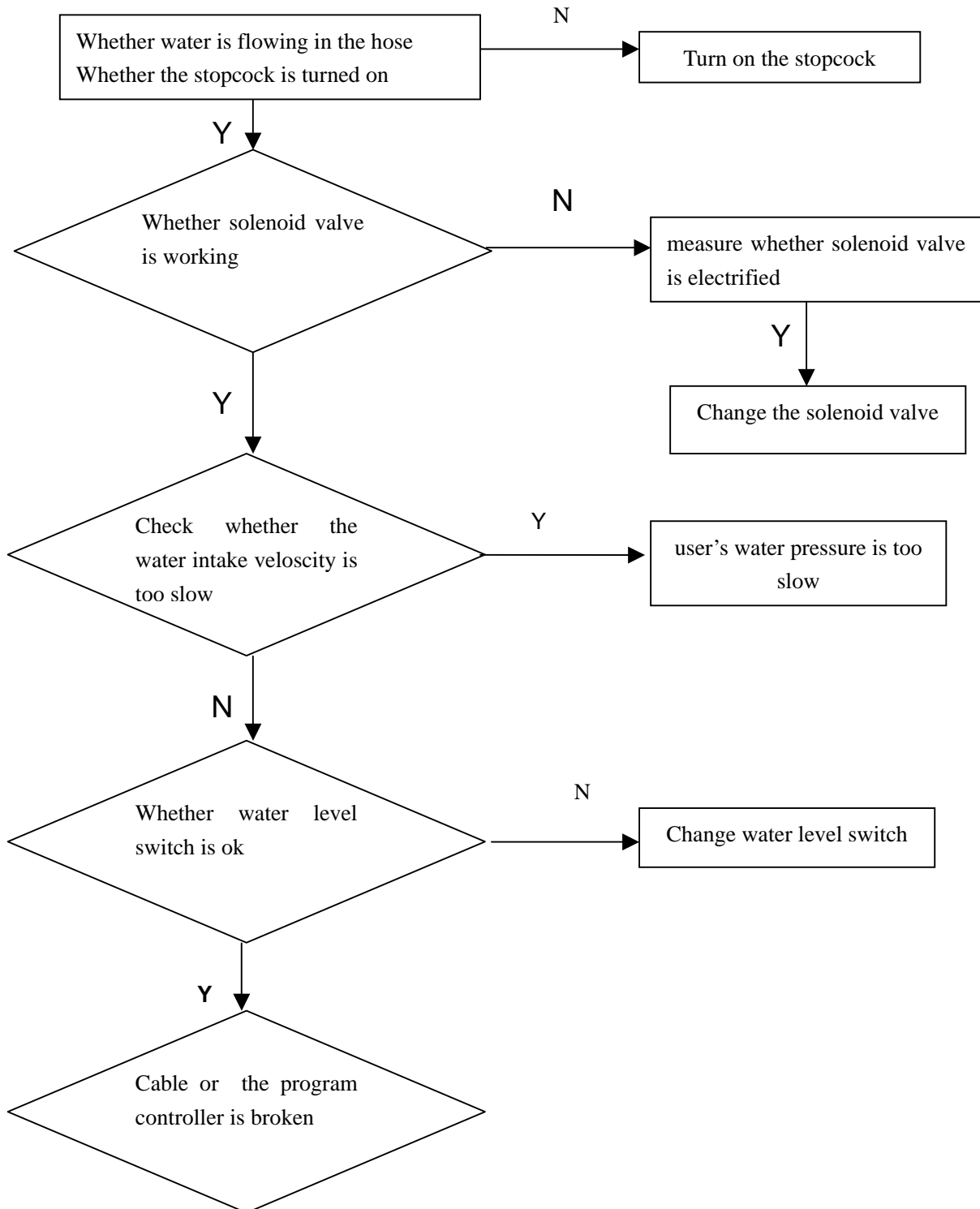
analysis of the common breakdowns

Door switch trouble



Maintenances Services and Trouble Shooting

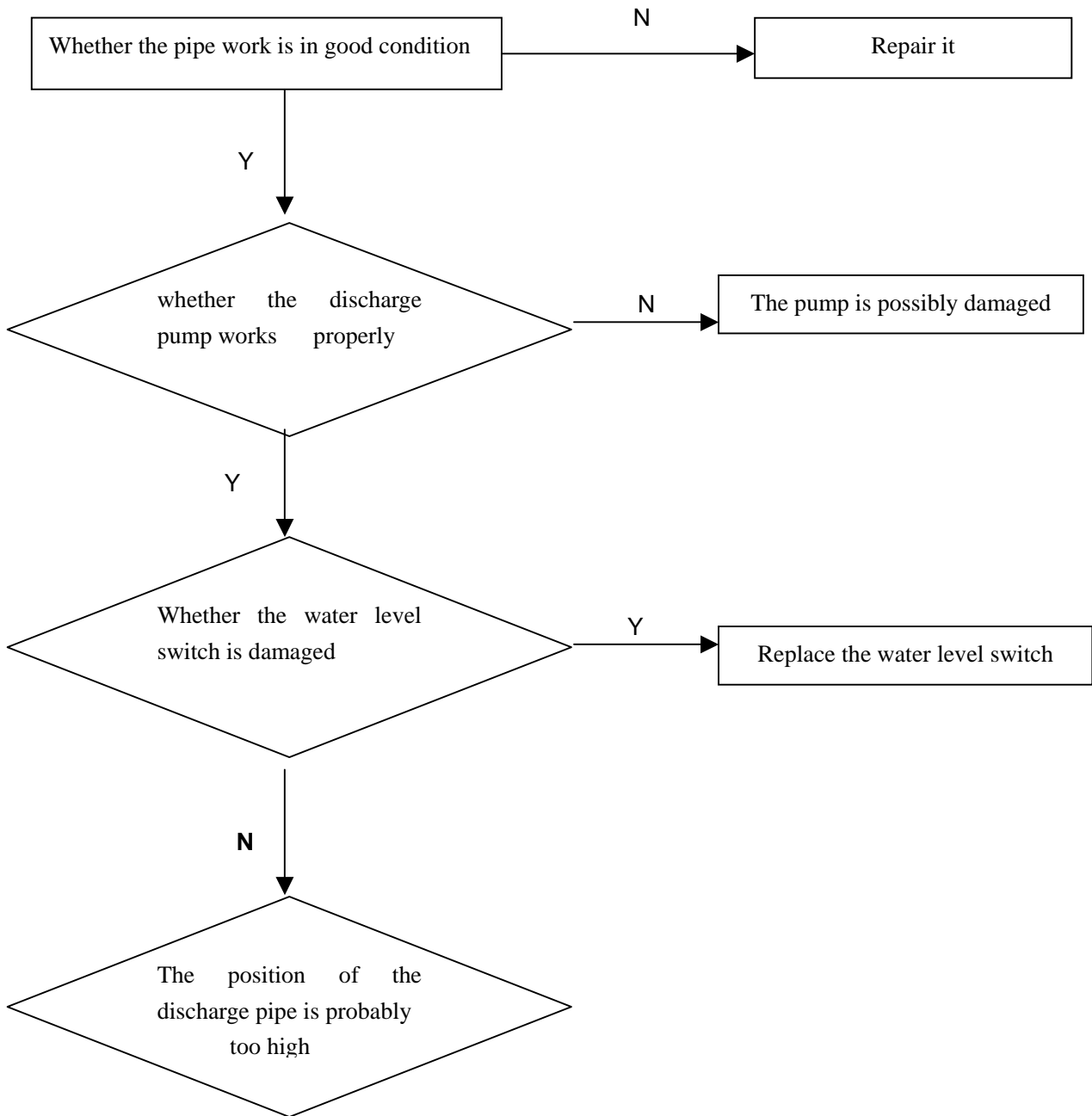
analysis of the common breakdowns
water supply trouble



Maintenances Services and Trouble Shooting

analysis of the common breakdowns

Water discharge trouble

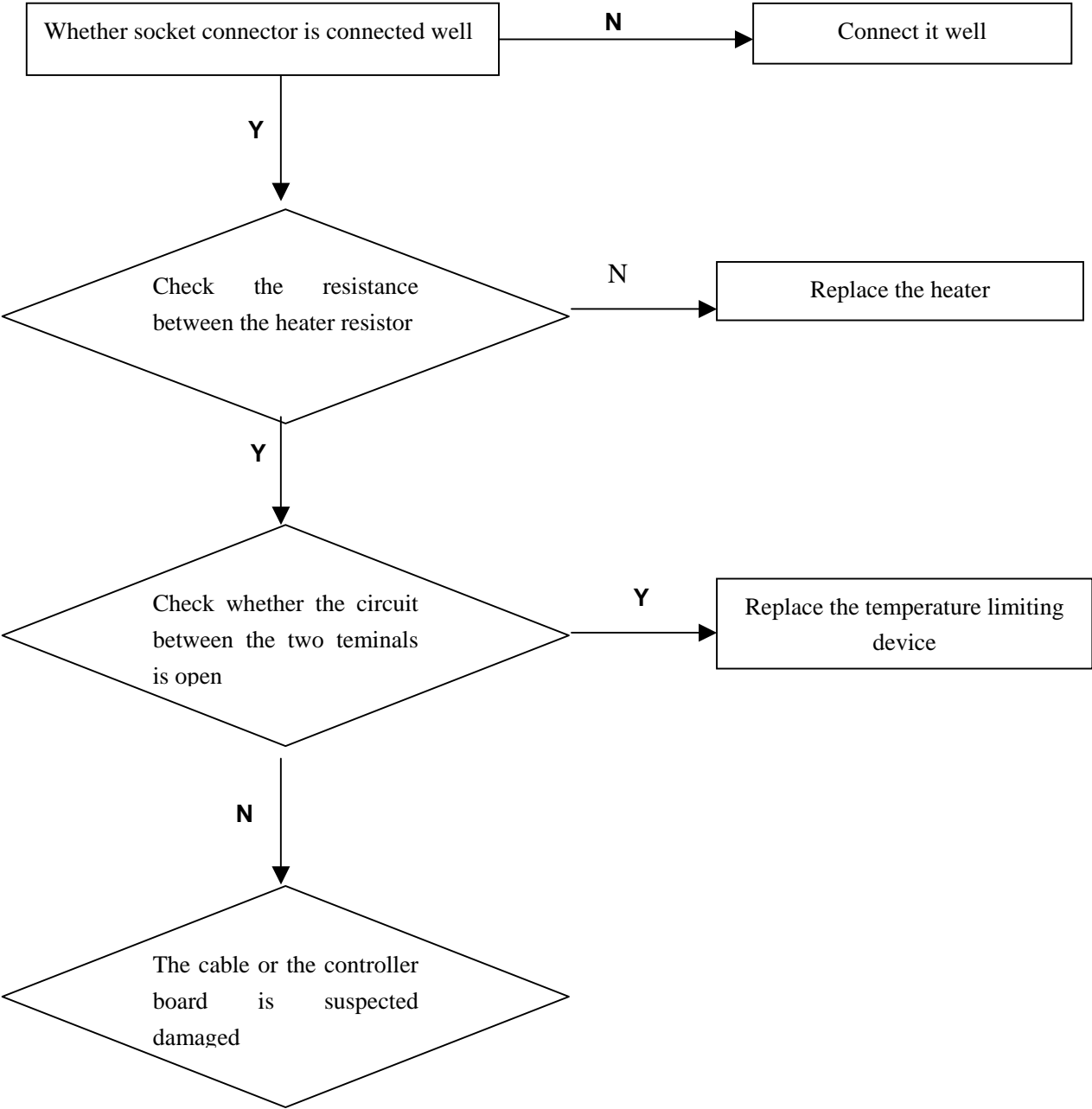


Maintenances Services and Trouble Shooting

analysis of the common breakdowns

Heating trouble

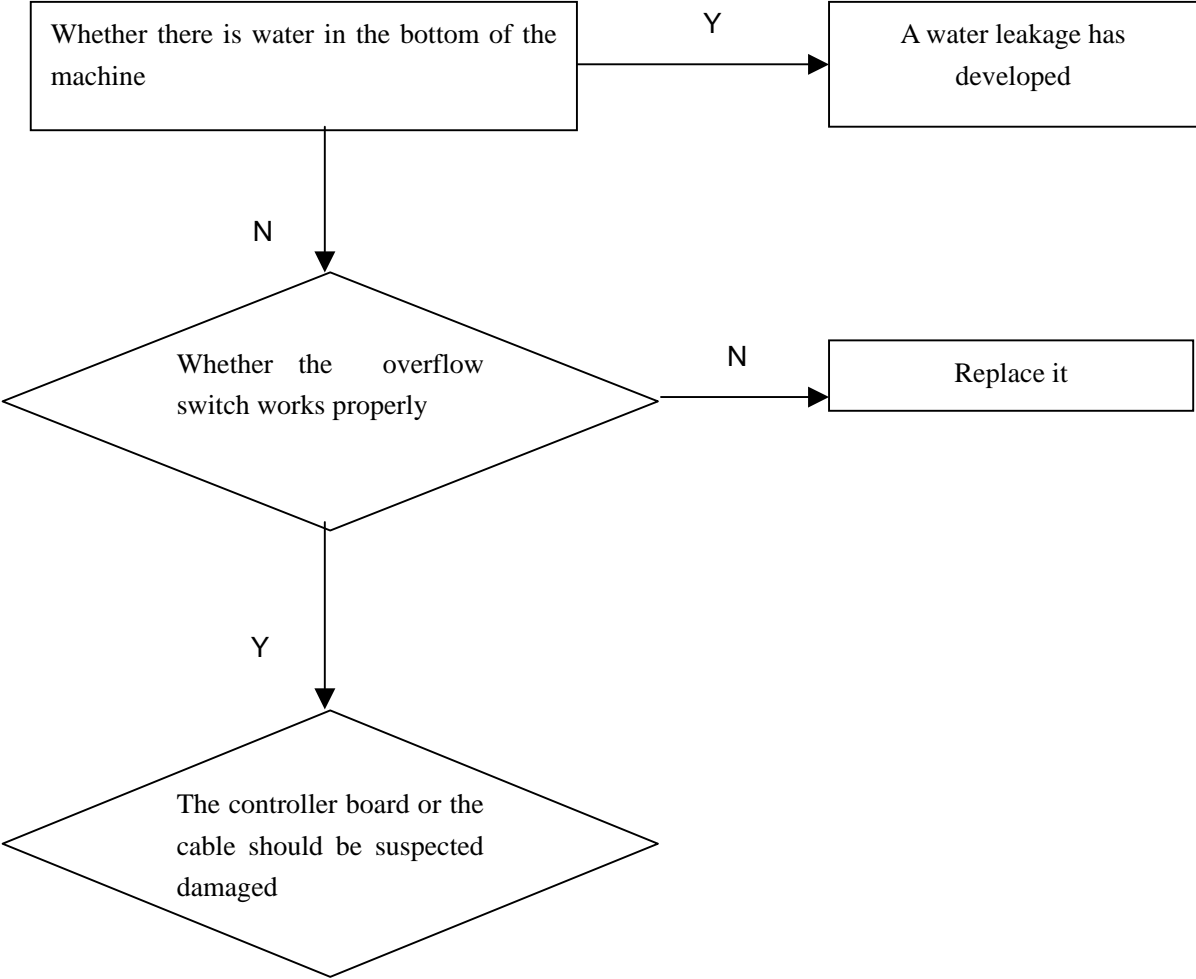
Check:



Maintenances Services and Trouble Shooting

analysis of the common breakdowns

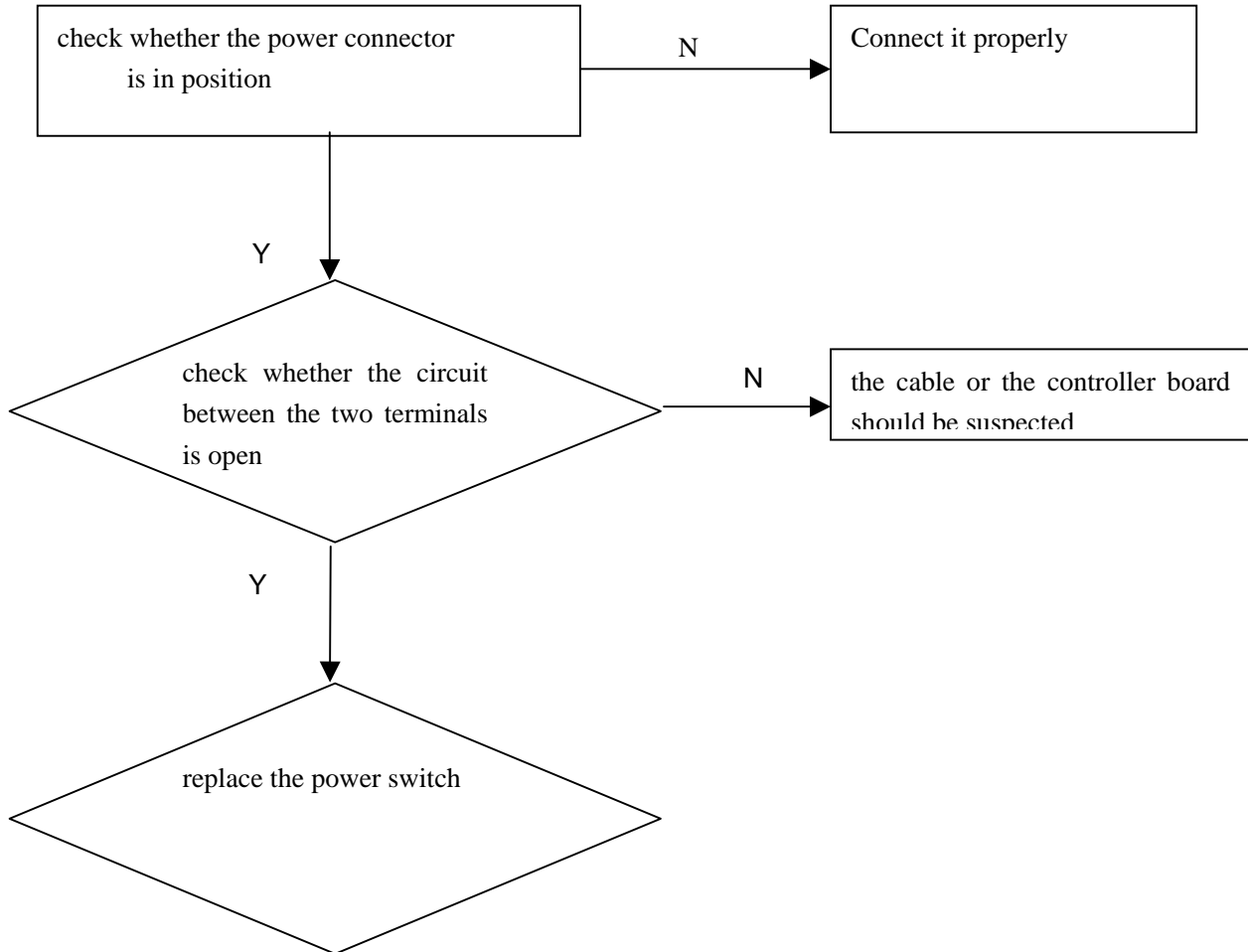
Overflow trouble



Maintenances Services and Trouble Shooting

analysis of the common breakdowns

power trouble



9. Circuit Diagram

