



# DI454

**Caple 45cm Integrated Dishwasher**

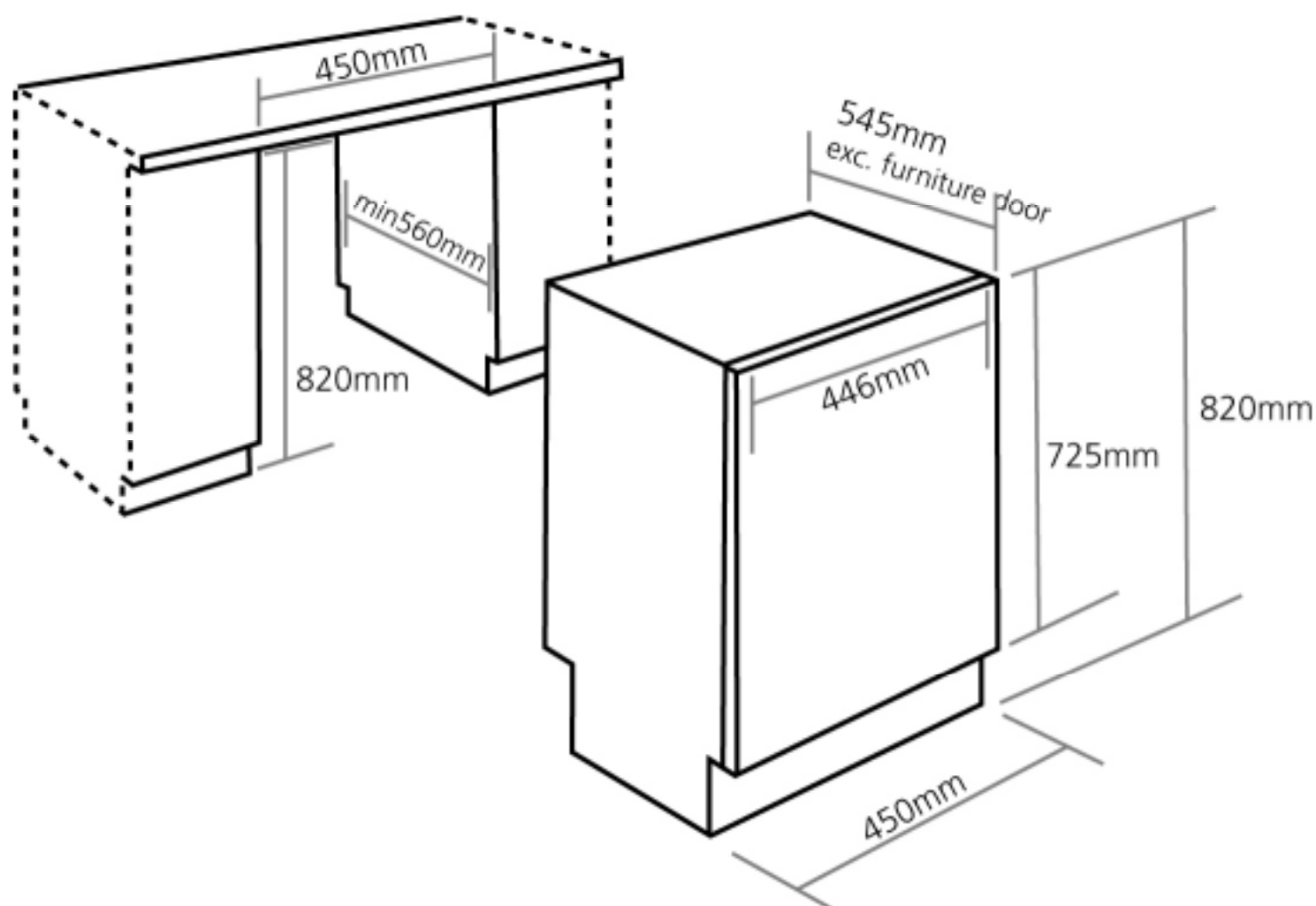


**TECHNICAL INFORMATION**

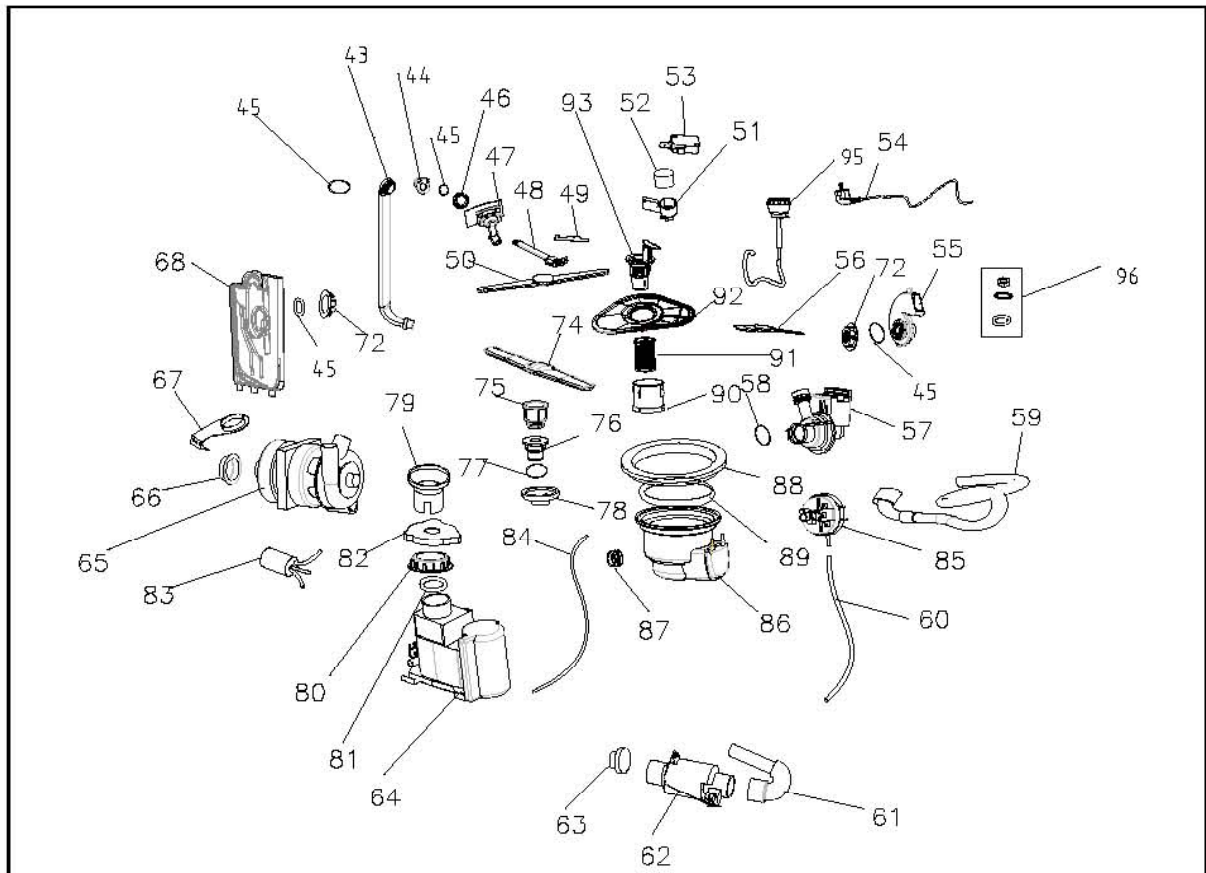
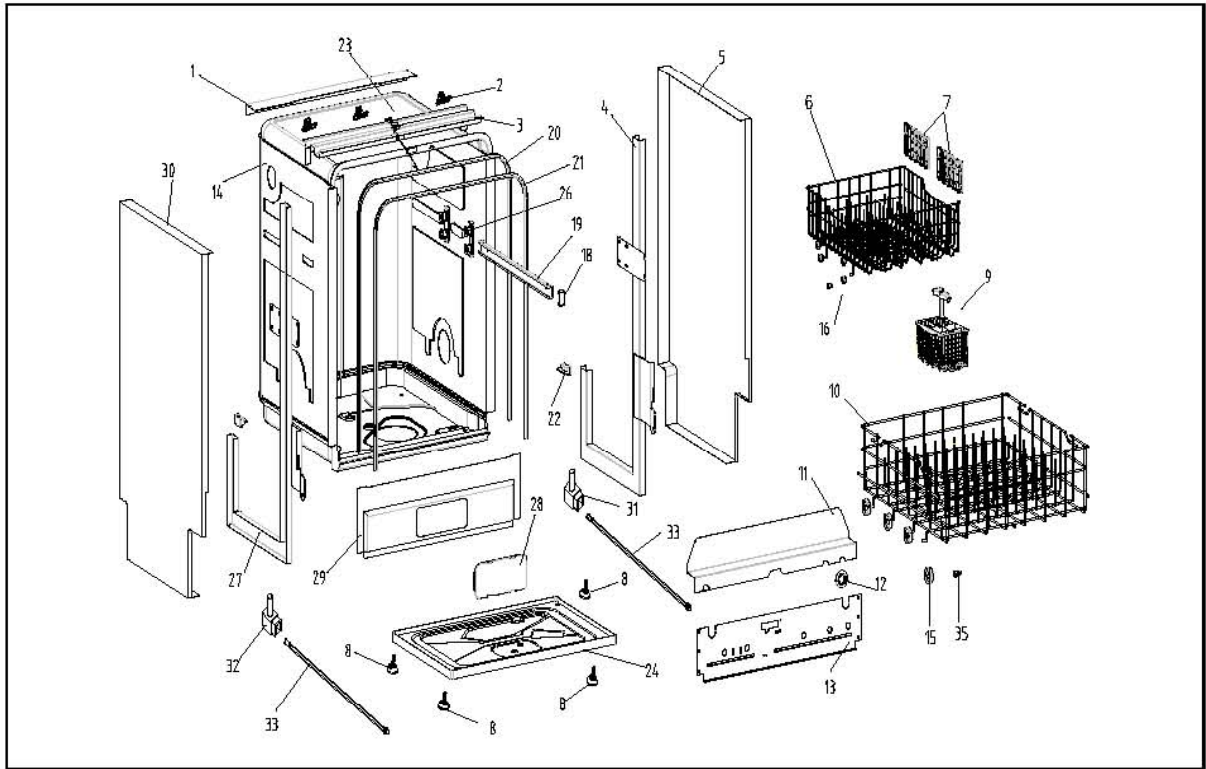


# DI454

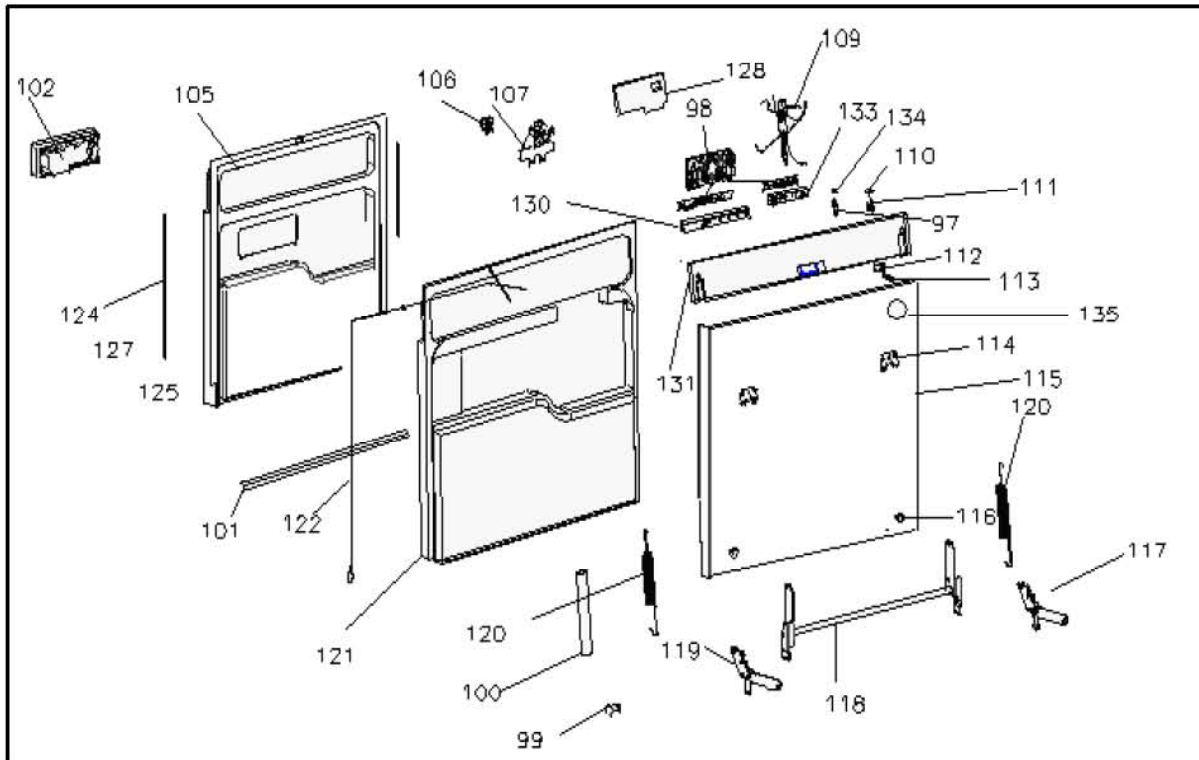
## Caple 45cm Integrated Dishwasher



**Exploded View**



Exploded View



**Dishwasher****Model:Di454****Parts List**

NO.	Name of part	Part Specialized code	QTY.	Remark
1	Upper rear crosspiece	0120103082	1	
2	Main screw for self threading screw 3.5	0120200057	3	
3	Upper front crosspiece	0120103079	1	
4	Right upright assembly	0120105717	1	
5	Painted right side pannel	0120106819	1	
6	Upper basket	0120803069	1	
7	Tilter for upper basket	0120201734	4	
8	Adjustable foot	0120600009	2	
9	Cutlery basket	0120803627	1	
10	Lower basket	0120803068	1	
11	Rear intermediate crosspiece	0120103081	1	
12	Drain hose stop	012G2160204	1	
13	Lower rear crosspiece for acquostop	0120103939	1	
14	Insulated tub assembly	0120806735	1	
15	Wheel for lower basket	012G2150053	8	
16	Wheel for high basket	012G2150052	8	
18	Basket rail stop	012G2150054	4	
19	Mobile rail for basket	012G1020069	2	
20	Tub gasket	0120300395	1	
21	Support frame for tub gasket	0120103088	1	
22	Upright small block	0120200124	2	
23	Hooking	012G2150037	1	
24	Tray	0120106846	1	
26	Rail support assembly	012G2150034	4	
27	Left upright assembly	0120105716	1	
28	Cover for front crosspiece	0120200065	1	
29	Lower front crosspiece	0120103083	1	
30	Painted left side pannel	0120106818	1	
31	Right threaded tapered gear	0120800223	1	
32	Left threaded tapered gear	0120800224	1	
33	Tie rod for foot adjusting	0120100051	2	
35	Wheel support pin	012G2160208	16	
43	Outer duct	012G2160241	1	
44	Basket guide housing	012G2160199	1	
45	O-Ring	012G4050157	3	
46	Ring nut for outer duct fastenig	0120203186	1	
47	Feeding dispenser assembly	012G9380536	1	
48	Water diversion pipe	012G2160260	1	
49	Pin for inner duct hooking	012G2150061	1	
50	Upper sprayer assembly	012G9380550	1	
51	Support for float	0120202056	1	
52	Float for Acquastop	0120503119	1	
53	Micro switch Elbi Type S3	012G6050040	1	
54	Power supply cable	0124000096	1	
55	Air outlet	012G2160197	2	
56	Thermo limiter assembly	0120800379	1	
57	Drain pump	012G5040004	1	
58	O-Ring	012G4050158	1	
59	Drain hose assembly	012G2140061	1	
60	Pressure switch tube	012G2140067	1	
61	Coupling (column / heating element)	0120200225	1	
62	Heater assembly	0120800355	1	
63	Water intake hose ( heating element)	0120200220	1	
64	Water softener	012G9380537	1	
65	Washing pump assembly	012G9380538	1	

**Parts List**

NO.	Name of part	Part Specialized code	QTY.	Remark
66	Vibration-proof ring motor	012G4050159	1	
67	Motor bracket assembly	012G9350006	1	
68	Breather assembly	012G2160196	1	
72	Breather ring nut	012G2150045	1	
74	Lower sprayer	012G1450620	1	
75	Lower sprayer column	0120200252	1	
76	Lower sprayer base	0120200489	1	
77	O-type sealing ring	012G4050153	1	
78	Lower sprayer base fixing piece	012G2160193	1	
79	Salt dispenser funnel	0120201753	1	
80	Softener ring nut	012G2150042	1	
81	Water softener sealing ring	012G4050236	1	
82	Cover of salt dispenser port assembly	012G2150043	1	
83	Electric wave filter	0120400001	1	
84	Connection pipe	012G4050244	1	
85	1-level pressure switch	012G6050031	1	
86	Water gutter	012G2160191	1	
87	Rubber coupling	012G4050152	2	
88	Ring nut for cup fastening	012G2150040	1	
89	Cup gasket	012G4050151	1	
90	Microfilter (polyesthere)	012G1040014	1	
91	Cylindric stainless steel filter	0120200949	1	
92	Stainless steel extractable filter	012G1040012	1	
93	Extractable glass filter	012G2160212	1	
95	Infall pipe	0120800683	1	
96	Elasticity retainer	0120600060	2	
97	Green indicator	0120800354	1	
98	control panel	0120804253	1	
99	Hinge shaft	012G8080007	4	
100	Door spring Cover	0120200048	2	
101	Door gasket	012G4050172	1	
102	Detergent dispenser	0124000746	1	
105	Inner Door	0120806518	1	
106	Door switch	0120800356	1	
107	Switch mechanism assembly	0120800357	1	
109	Control cable	0124000224A	1	
110	Power Key-press	0120200226	1	
111	Power supply switch	012G9370091	1	
112	Springs adjusting small block	0120100042	2	
113	Spring adjusting screw	0120600197	2	
114	Block hooking bracket	0120100052	2	
115	Outer door	0120106381	1	
116	Rubber	0120300014	2	
117	Left hinge articulation	012G9380558	1	
118	Complete hinge assembly	0120800660	1	
119	Right hinge articulation	012G9380559	1	
120	Door spring	0120100047	2	
122	Adjustable cable	0120103154	2	
124	Door gasket guard strip	012G2140094	2	
128	control cover	0120200244	1	
130	Left led card support	0120300394	1	
131	Dashboard	0120203340	1	
133	Right led support protection	0120300393	1	
134	Green indicator cover	0120200191	1	
135	Sealed plug	0120300304	2	



# Service Manual



**Models:**

Di454

## Features

- B grade for energy consumption of European standard
- Electronic control, delay washing
- Three-spraying, higher cleaning ratio
- Water softener for descaling
- Wuper-capacity for 9 settings

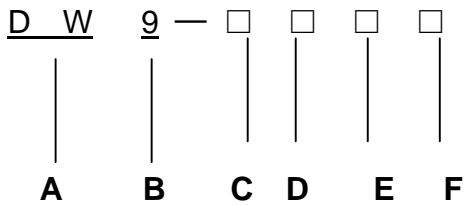
# Contents

---

1. Product Code illumination and Series introduction .....	3
2. Features.....	4
3. Net Dimension.....	5
4. Installation and Accessory Parts.....	5
5. Parts and Functions.....	6-11
6. Function Schedule.....	12
7. Program Diagram.....	13
8. Maintenances Service and Trouble Shooting.....	14-19
9. Circuit Diagram.....	20

## 1.Product Code Illumination and Series Introduction

### Model Identification



- A:** Abbreviation of dishwasher
- B:** Code name of Nominal capacity
- C:** Series of factory design
- D:** Freestanding/built –in/semi-built-in
- E:** Mechanical/Electronic
- F:** The second series of factory design code name described/outer side material

### Examples:

**DW9-CBE0**

It represents automatic spraying electronic built –in dishwasher, the cavity capacity is 9 standard sets.

## **2.Features**

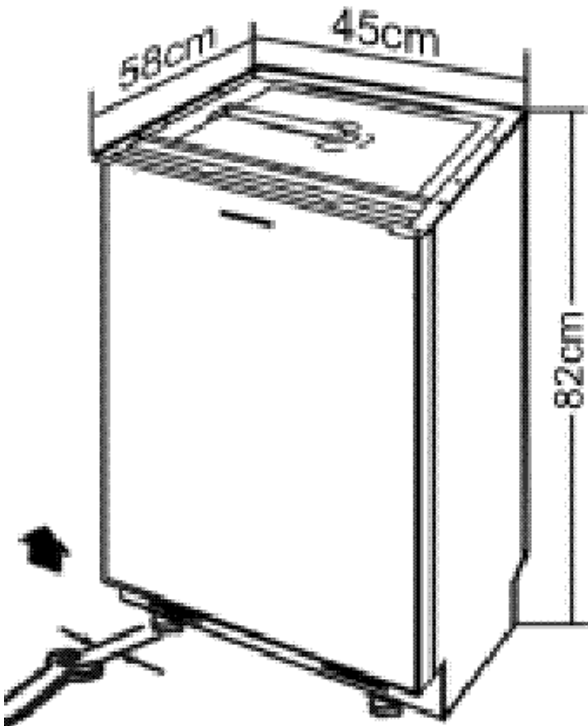
### **2.1Prewashing**

It may avoid the peak of using electricity effectively, saving electricity consumption.

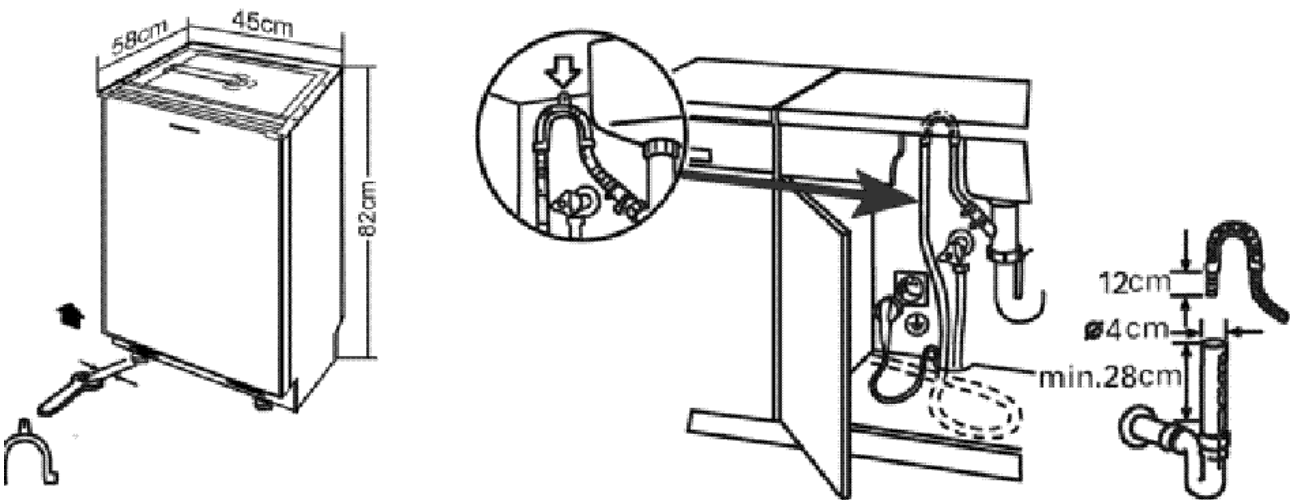
### **2.2Half load washing**

Half loading fashion which the upper-rack only mode is available get saving electricity and water consumption, if the dishwares is not too much.

3.Net dimension



4.Installation and Accessory Parts



### 5.1 Positioning the Appliance

Position the appliance in the desired location. The back should rest against the wall behind it, and the sides, along the adjacent cabinets or wall. The dishwasher is equipped with water supply and drain hoses that can be positioned on the right or the left to facilitate proper installation.

### 5.2 Leveling the Appliance

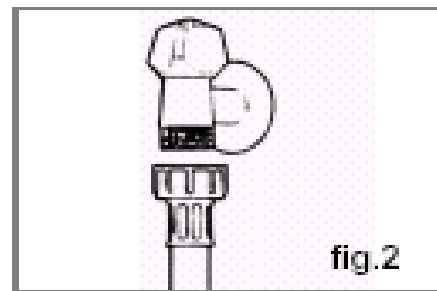
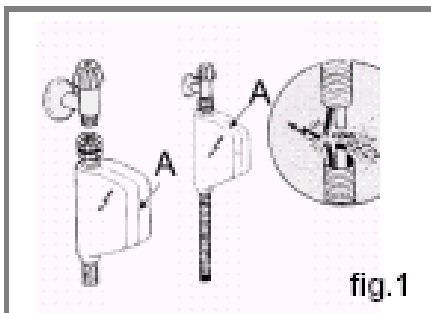
Once the appliance is positioned, adjust the feet (screw them in or out) to level the dishwasher. In any case, the appliance should not be inclined more than 2°. If the appliance is level, it will help ensure proper performance.

### 5.3 Cold Water Connection

Connect the cold water supply hose to a threaded 3/4" (gas) connector and make sure that it is fastened tightly in place (see Fig 2).

Some models are fitted with an "AquaStop" water supply hose (see fig.1) in which the small filter is already housed in the threaded end.

If the water pipes are new or have not been used for an extended period of time, let the water run to make sure that the water is clear and free of impurities. If this precaution is not taken, there is a risk that the water inlet can get blocked and damage the appliance.



### 5.4 Hot Water Connection

The water supply to the appliance can also be connected to the house's hot water line (centralised system, heating system), as long as it does not exceed a temperature of 60°C.

In this case, the wash cycle time will be shortened by about 15 minutes and the wash efficiency slightly reduced.

The connection must be made to the hot water line following the same procedures as those for the connection to the cold water line.

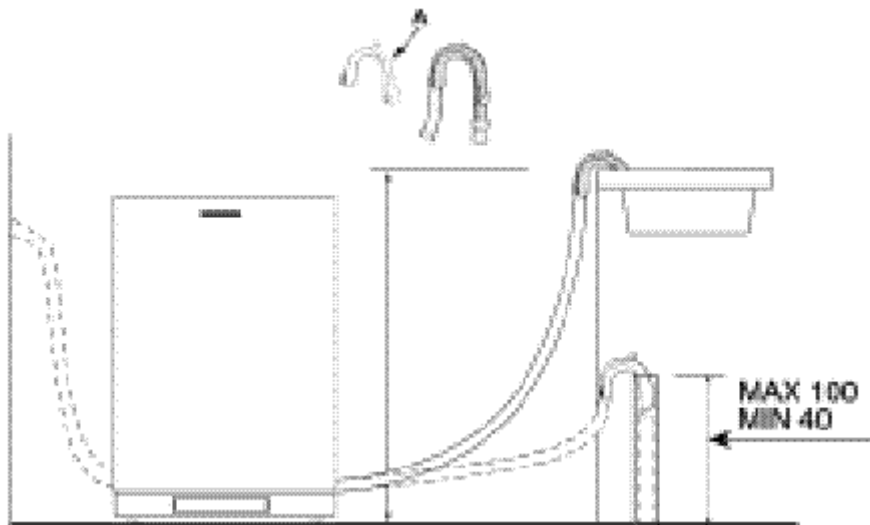
### 5.5 Anti-Flooding Protection

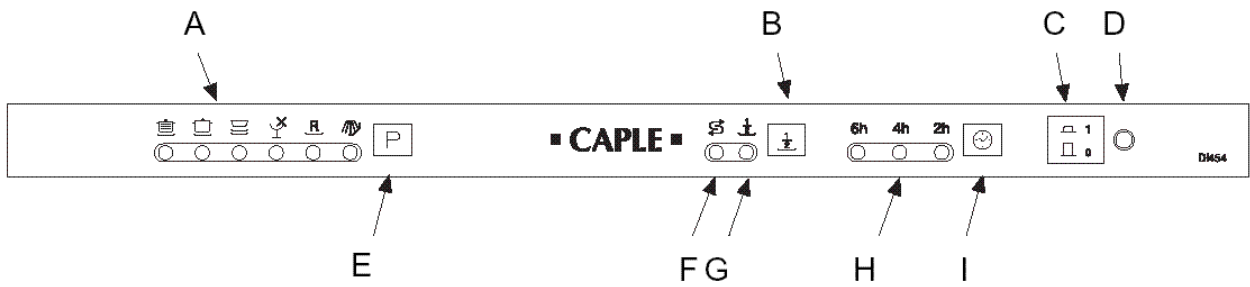
The dishwasher is equipped with a system that stops the supply of water in the event of a problem with the water supply hose, or leaks within the unit, in order to prevent damage to your home. If for any reason the box containing the electrical components happens to get damaged, remove the plug for the appliance from the socket immediately. In order to guarantee that the anti-flooding feature operates properly, the "A" box with water supply hose must be attached to the water supply tap as shown in Fig .1. No other type of connection is acceptable. The water supply hose must not, under any circumstances, be cut, as it contains electrical parts which are live. If the length of the hose is not adequate to make

a proper connection, the hose must be replaced with one which is long enough. This hose is available upon request from specialised retailers and service centers.

### 5.6 Drain Hose Connection

Insert the drain hose into a drain pipe with a minimum diameter of 4cm, or let it run into the sink, making sure to avoid bending or crimping it. Use the special plastic support that comes with the appliance (see Fig.2). The free end of the hose must be at a height between 40 and 100 cm and must not be immersed in water.





A Cycle Indicator Light

B "HALF LOAD" Button

C ON-OFF Button

D ON-OFF Light

E Cycle Select Button

F Low Salt Indicator Light

G "HALF LOAD" Indicator Light

H Delay Indicator Light

I Delay Select Button

### Salt

The hardness of the water varies from place to place. If hard water is used in the shwasher, deposits will form on the dishes utensils.

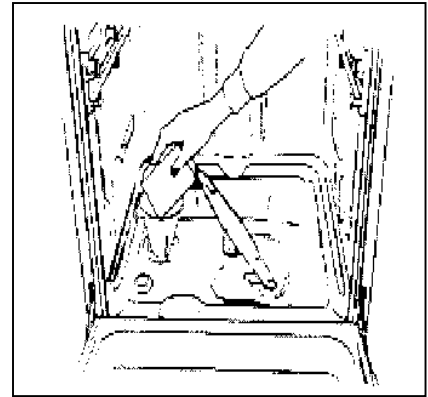
The appliance is equipped with a special softener that uses a salt specifically designed to eliminate lime and minerals from the water.

### Loading the Salt into the Softener

Always use salt intended for use with dishwashers.

The salt container is located beneath the lower rack and should be filled as follows:

- Remove the lower rack and then unscrew and remove the cap from the salt container;
- If you are filling the container for the first time, fill it with water;
- Place the end of the funnel(supplied) into the hole and introduce about 2 kg of salt. It is normal for a small amount of water to come out of the salt container.
- Carefully screw the cap back on.



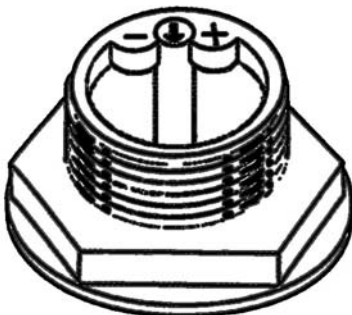
The salt container must be filled when the "low salt" indicator light (located on the control panel) comes on.

*To prevent the formation of rust, load the salt just before beginning a wash cycle.*

### Adjusting Salt Consumption

The dishwasher is designed to allow for adjusting the amount of salt consumed based on the hardness of the water used. This is intended to optimize and

customize the level of salt consumption so that it remains at a minimum. Your local Water Board can supply the degree of hardness of the water in your area.



Water Hardness					
Clarke detergent	° dH	mmol/l	Selector position	Salt consumption (Grams/cycle)	Autonomy (cycles/2kg)
0 ÷ 14	0 ÷ 10	0 ÷ 1,7	/	0	/
14 ÷ 36	18 ÷ 44	1,8 ÷ 4,4	"-"	20	60
36 ÷ 71	45 ÷ 89	4,5 ÷ 8,9	MED	40	40
>71	>89	>8,9	"+"	60	25

To adjust salt consumption, proceed as follows:

- Unscrew the cap from the salt container;
- There is a ring on the container with an arrow on it (see figure to the side), If necessary, rotate the ring in the anticlockwise

direction from the "-" setting towards the "+" sign, based on the hardness of the water being used.

It is recommended that adjustments be made in accordance with the following scheme:

### Detergent

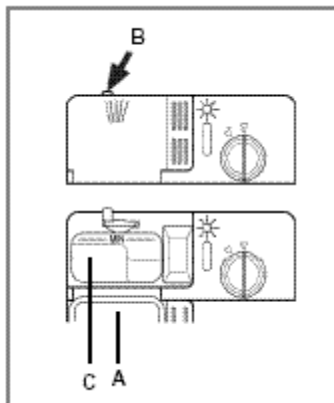
Detergent specifically intended for use with dishwashers must be used. The dispenser must be refilled before the start of each wash cycle following the instructions provided in the "Wash Cycle Table." The detergent dispenser is located on the inside panel the door.

### Loading the detergent

To open the "A" cover on the dispenser, press the "B" button. The detergent for the wash cycle should be poured into the "C" compartment.

After the detergent has been placed in the dispenser, close the cover and press down until it clicks in place.

**Notice:** To facilitate closing the cover, remove any excess detergent on the edges of the dispenser.

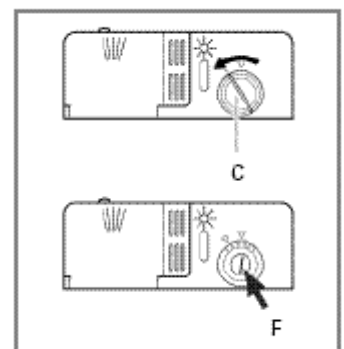


### Rinse Aid

This product makes dishes sparkle and helps them to dry without spotting. The dispenser is located on the inside panel of the door and should be filled after every 80 wash cycle (or when the rinse aid indicator light comes on for those models with this feature).

### The Rinse Aid

To open the dispenser, turn the "C" cap in the anti-clockwise direction and then pour in the rinse aid, making sure not to overfill. The amount of rinse aid used for each cycle can be regulated by turning the "F" dose adjuster, located beneath the "C" cap, with a screwdriver. There are 6 different settings; the normal dosage setting is 3.



### Important

Proper dosage of the rinse aid improves drying.

If drops of water remain on the dishes or spotting occurs, the dosage adjuster should be turned to a higher setting.

If the dishes have white streaks, turn the dosage adjuster to a lower setting.

Before placing the dishes in the dishwasher, remove the larger food debris to prevent the filter from becoming clogged, which

results in reduced performance.

If the pots and pans have baked-on food that is extremely hard to remove, we recommend that they be allowed to soak before they are washed. This will eliminate the need for extra wash cycles. Pull out the rack to facilitate loading the dishwasher.

Before placing the dishes in the dishwasher, remove the large food particle to prevent the filter from becoming clogged, which results in reduced performance.

If the pots and pans have baked-on food that is extremely hard to remove, we recommend that they be allowed to soak before they are washed. This will eliminate the need for extra wash cycle.

Pull out the rack to facilitate loading the dishwasher.

### How to Use the Lower Rack

We recommend that you place the items which are the most difficult to clean items on the lower rack: pots, lids, serving dishes and bowls, as shown in the figure to the right.

It is preferable to place serving dishes and lids on the sides of the racks in order to avoid blocking the rotation of the top spray arm.

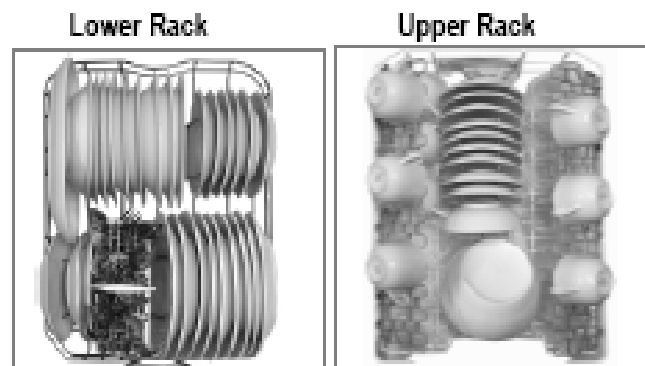
- Pots, serving bowls, etc. must always be placed face down.
- Deep pots should be slanted to allow the water to flow out.
- The silverware basket can not be doubled (see fig.A) .
- Silverware should be placed in the silverware basket with the handles at the bottom; if the rack has side baskets, the spoons should be located individually into the appropriate slots. Especially long utensils should be placed in the horizontal position at the front of the upper rack.

### How to Use the Upper Rack

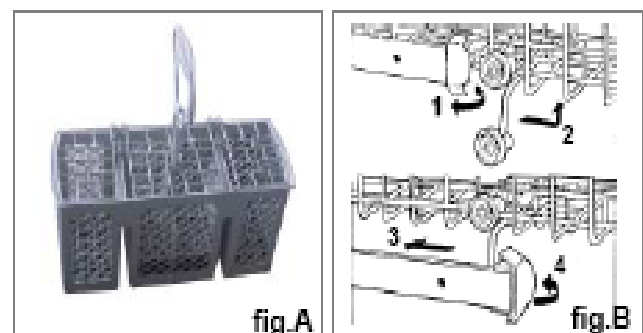
The upper rack is designed to hold more delicate and lighter dishware, such as glasses, coffee and tea cups and saucers, as well as plates, small bowls and shallow pans (as long as they are not too dirty).

Position the dishes and cookware so that they do not get moved by the spray of water.

The upper rack can be adjusted for height. (See fig.B)

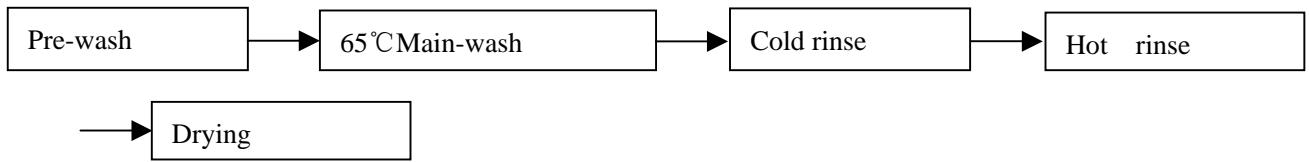


Load for 9 Standard Settings

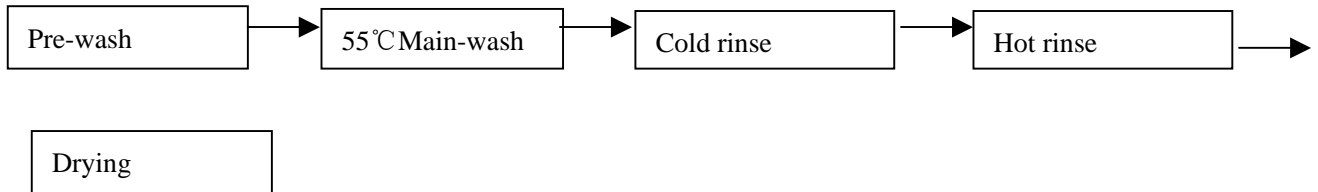


## 6. Function Schedule

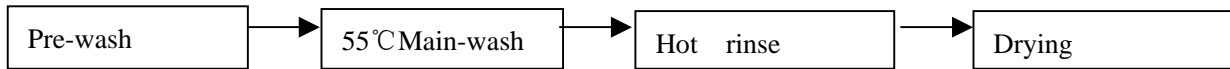
### 1、 Heavy wash



### 2、 Normal wash



### 3、 Light wash



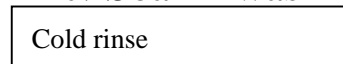
### 4、 Glasses wash




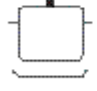




### 5、 Rapid wash



### 6、 Soak wash



## 7. Program Diagram

Cycle	Cycle Selection Information	Description of Cycle	Detergent	Rinse Aid
 Heavy Duty	Very dirty dishes, pots and pans. (Not to be used with delicate items)	Pre-wash with hot water. Extended wash at 65°C. Rinse with cold water. Rinse with hot water. Drying.	30g	★
 Normal Wash	Normal dirty dishes, pots and pans. Standard daily cycle.	Pre-wash use cold water. Extended wash at 55°C. Rinse with cold water. Rinse with hot water. Drying.	30g	★
 Light Wash (IEC-EN50242)	Normal dirty dishes, pots and pans without dried on residue.	Pre-wash with cold water. Extended wash at 50°C. Rinse with hot water. Drying.	30g	★
 Glassware	Economic, fast cycle to be used for items which are sensitive to higher. Run immediately after dishes are used.	Wash at 55°C. Rinse with warm water. Hot rinse. Drying.	15g	★
 Rapid Wash	Economic, fast cycle to be used to on not very dirty dishes right after they are used. No drying cycle.	Short wash at 40°C . Cold rinse.	15g	
 Soak	Pre-wash of dishes, pots and pans while waiting for the load to be completed after the subsequent meal.	Short cold wash to prevent food residue from drying on the dishes .		

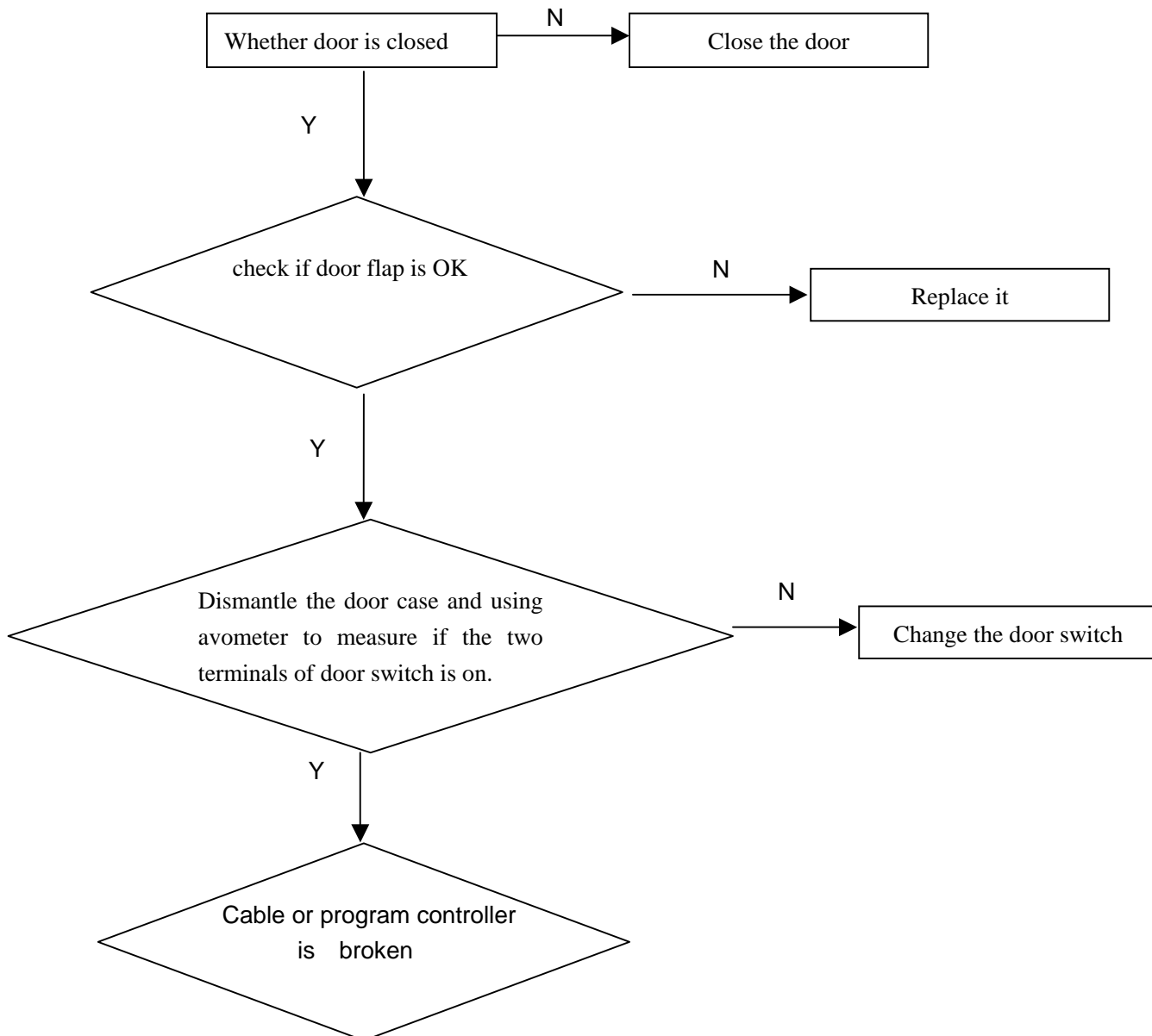
## 8.1 Maintenances Services

It may occur that the dishwasher does not function or does not function properly Before calling for assistance, let us see what can be done first :have you forgotten to press one of the buttons or to perform an essential operation?

## 8.2 Trouble Shooting

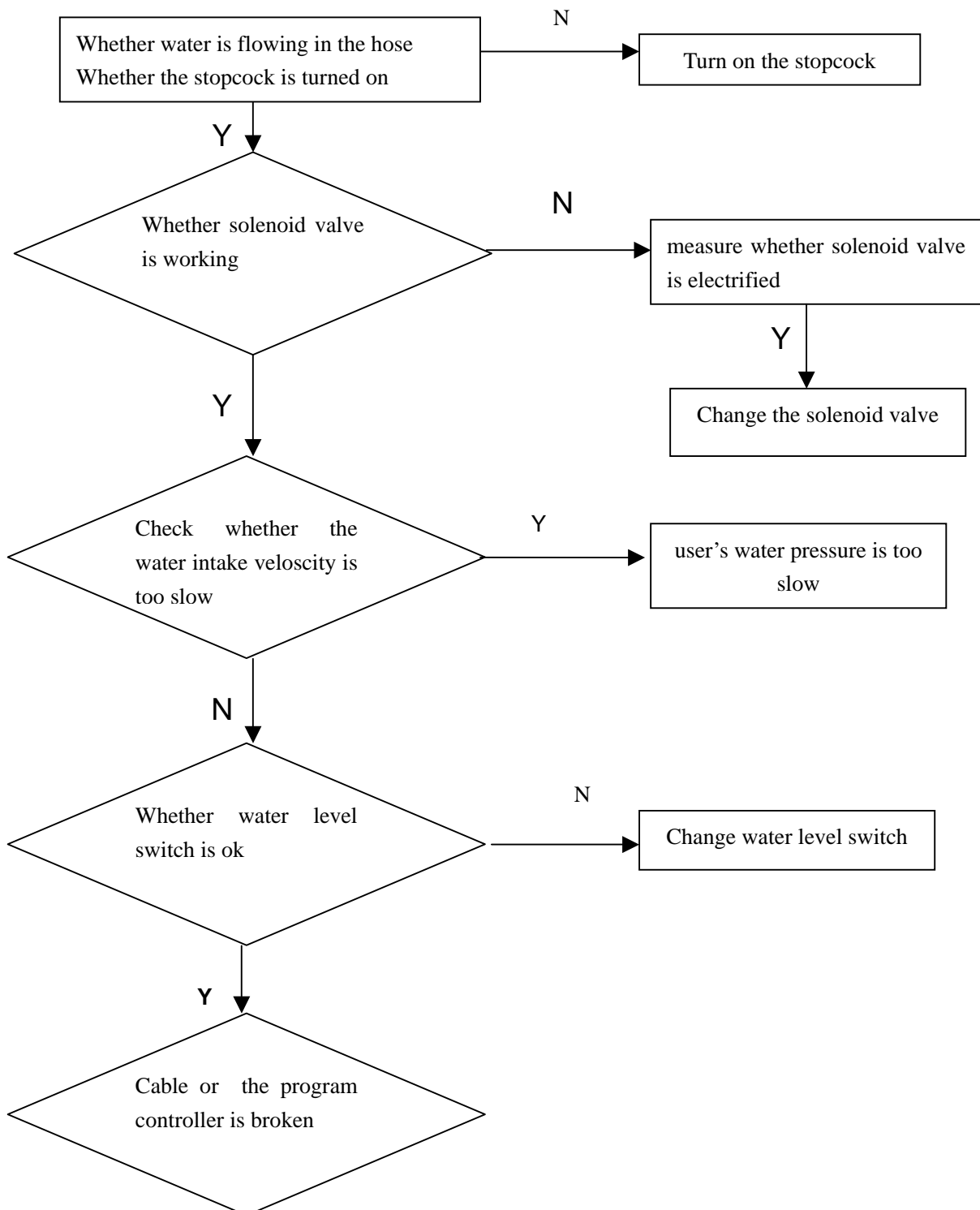
analysis of the common breakdowns

Door switch trouble



## Maintenances Services and Trouble Shooting

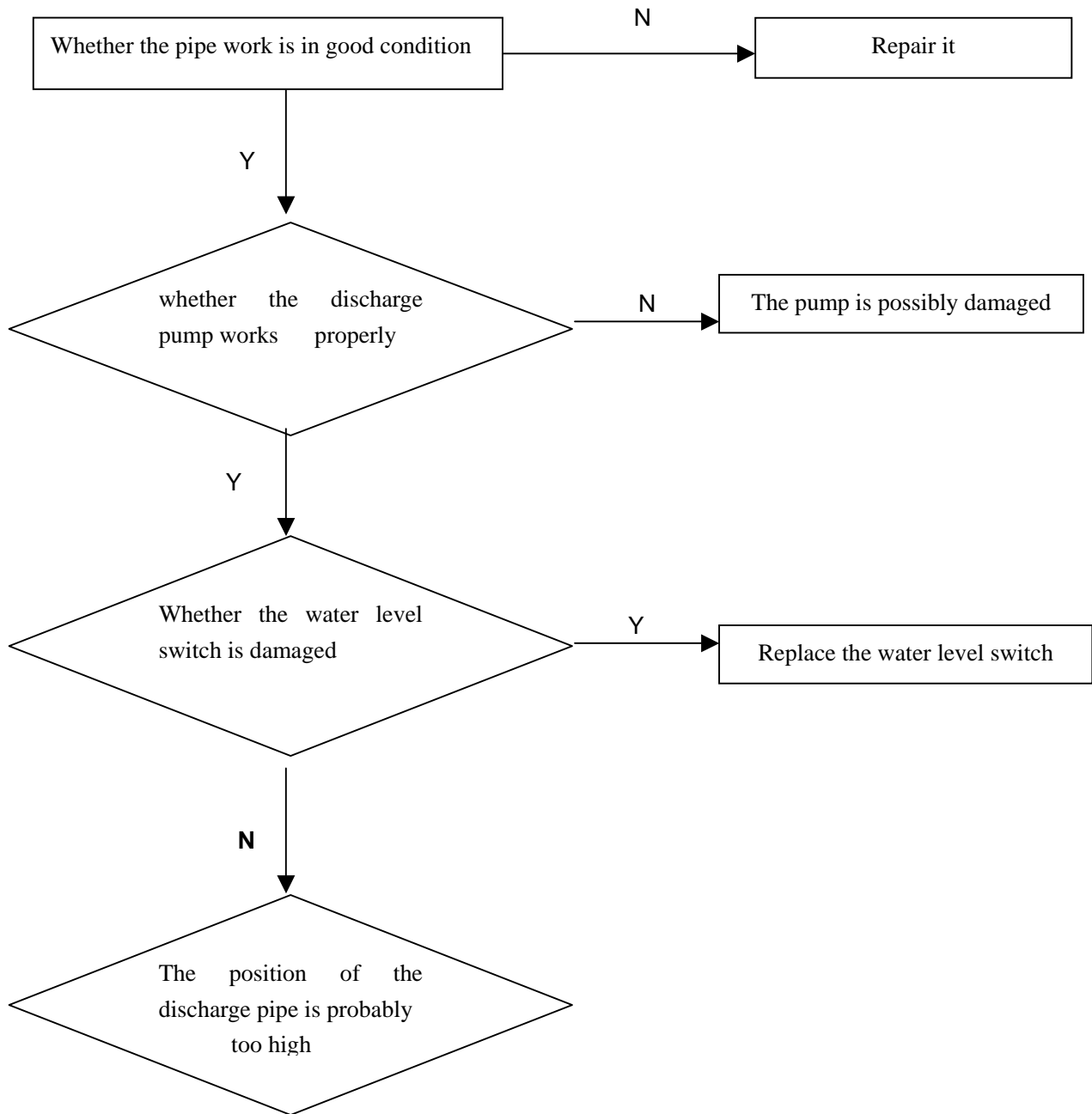
analysis of the common breakdowns  
water supply trouble



# Maintenances Services and Trouble Shooting

analysis of the common breakdowns

Water discharge trouble

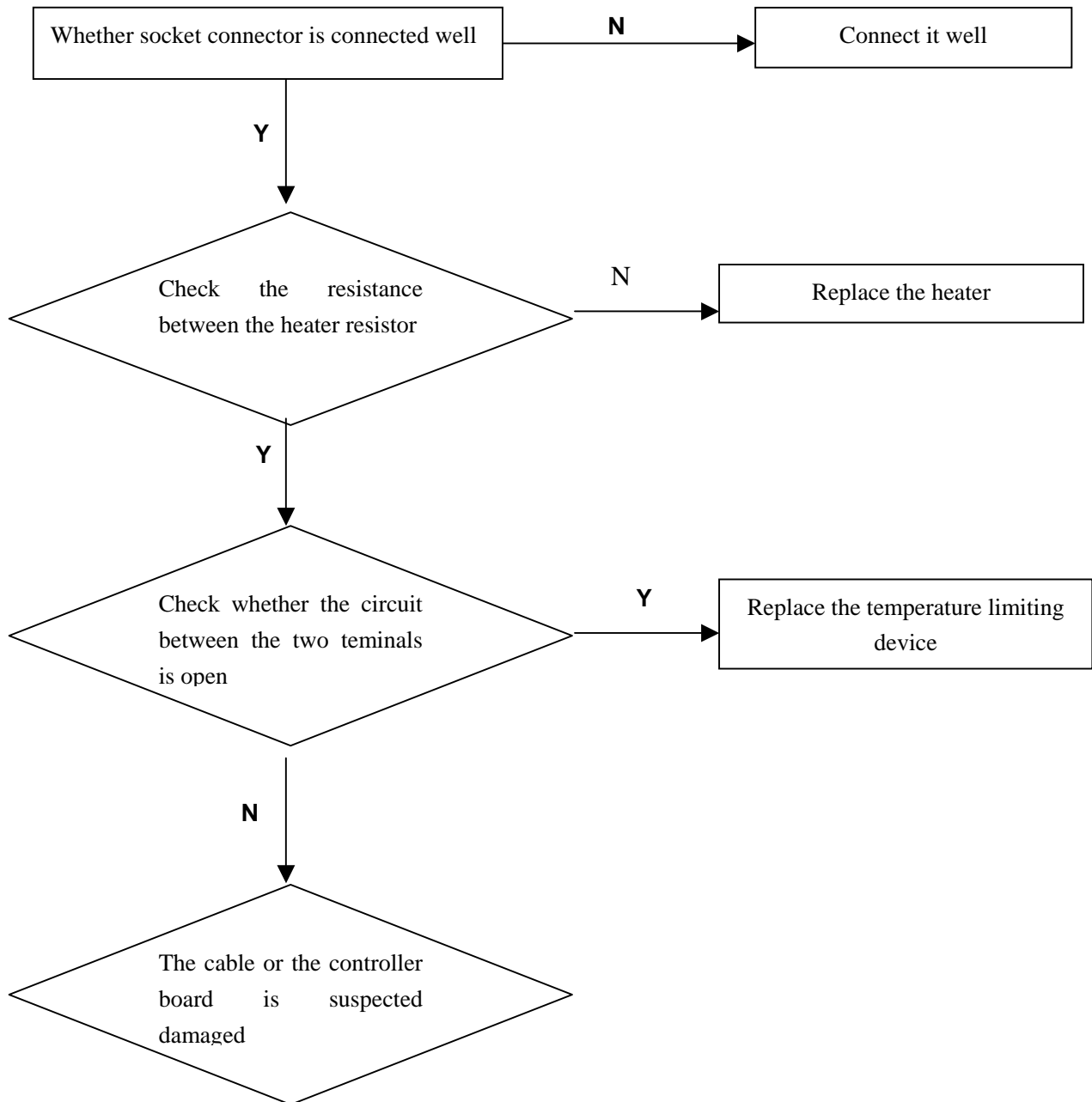


# Maintenances Services and Trouble Shooting

analysis of the common breakdowns

Heating trouble

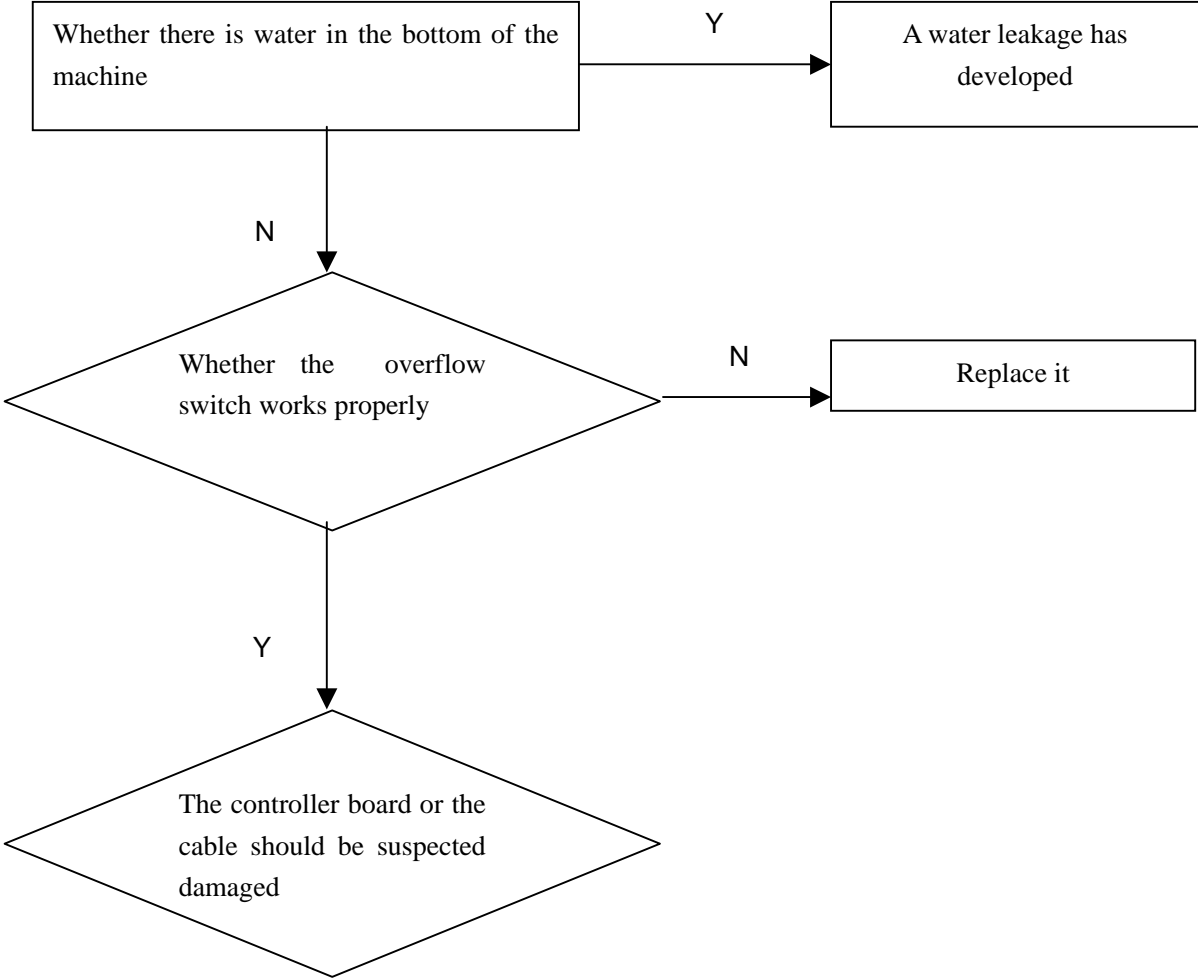
Check:



# Maintenances Services and Trouble Shooting

analysis of the common breakdowns

## Overflow trouble

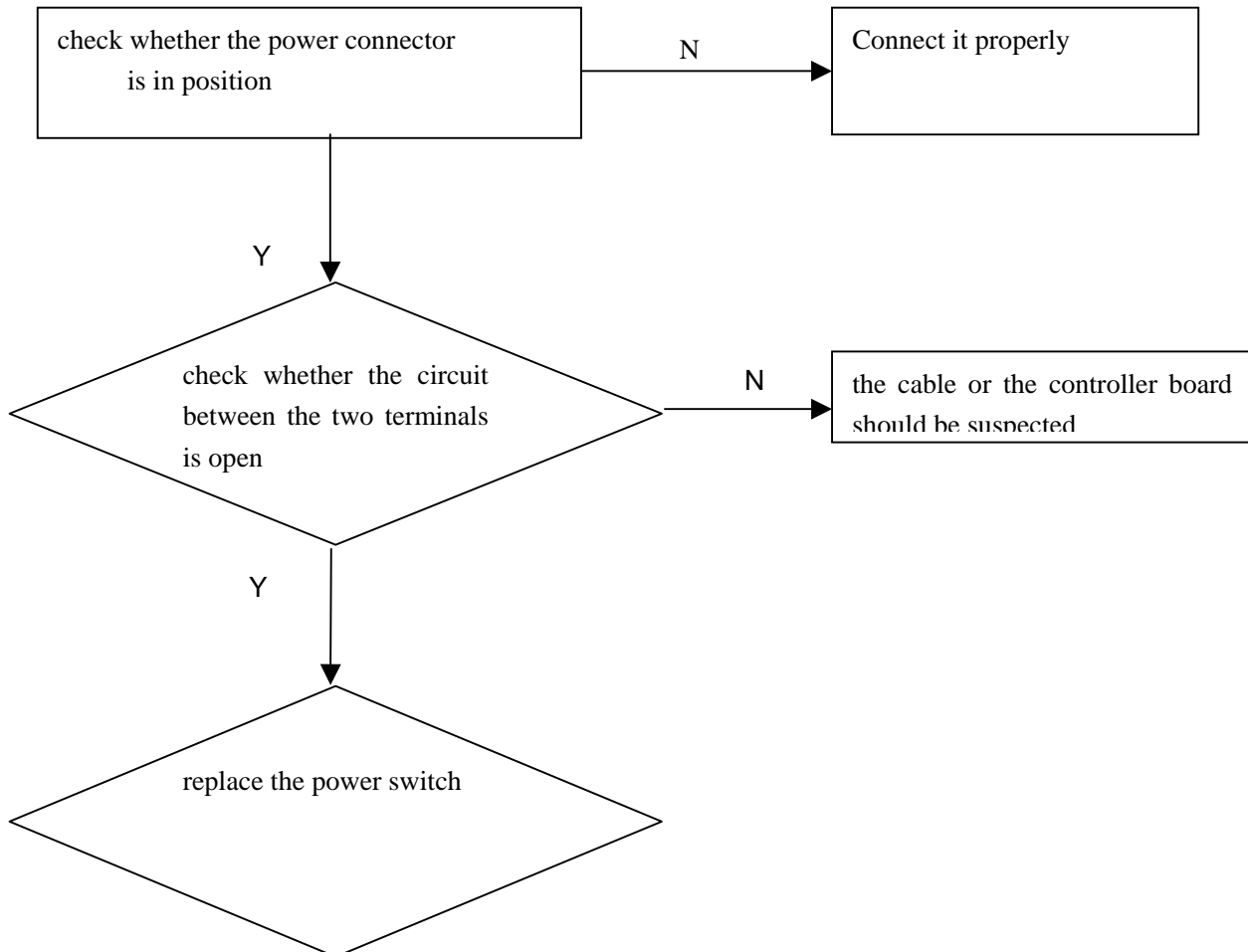


## Maintenances Services and Trouble Shooting

---

analysis of the common breakdowns

power trouble



## 9. Circuit Diagram

