



# **INSTALLATION AND OPERATING INSTRUCTION BOOKLET**

## **FSCHW3 CONVENTIONAL VISOR COOKER HOOD**

**IMPORTANT: You must read this Instruction Book before installing or using this appliance and retain it for future use.**

Caple Products  
Telephone: 0870 2411142  
Fax: 0117 982 6878

## SAFETY INSTRUCTIONS

*THIS COOKER HOOD IS DESIGNED FOR DOMESTIC USE ONLY*

These instructions are designed to help you get to know your new cooker hood quickly and to achieve the best possible results.

**It is most important that this instruction booklet should be retained with the appliance for future reference. Should the appliance be sold or transferred to another owner, or should you move house and leave the appliance, always ensure that the booklet is supplied with the appliance in order that the new owner can be acquainted with the functioning of the appliance and the relevant warnings. Please ensure that you have read the whole instruction book before using the appliance and that you follow the recommendations given.**

**These warnings are provided in the interest of safety. They must be read carefully before installing or using the appliance.**

- This cooker hood is designed to be operated by adults. Children should not be allowed to tamper with the controls or play with the product.
- It is dangerous to alter the specifications or modify the product in any way.
- A qualified electrician or a competent person must undertake any installation work.
- An authorised Service Agent should service this product, and only the manufacturers genuine spare parts should be used.
- Never leave frying pans unattended during use as over heated fats and oils may catch fire.
- Never do flambé cooking under this cooker hood.
- It is a possible fire hazard if the synthetic grease filter and charcoal filter are not replaced as recommended.
- When used in the extraction mode the cooker hood must not be connected to a flue which is used for exhausting fumes from appliances supplied with energy other than electric such as a central heating flue or water heating flue.

- If the room where the cooker hood is to be used contains a fuel-burning appliance such as a central heating boiler then its flue must be of the room sealed or balanced flue type.
- If other types of flue or appliances are fitted ensure that there is an adequate supply of air to the room.
- All installations must comply with the local authorities requirements for the discharge of exhaust air.
- If the cooker hood is installed for use above a gas appliance then the provision for ventilation must be in accordance with the Gas Safety Codes of Practice BS.6172, BS.5440 and BS.6891 (Natural Gas) and BS.5482 (LP Gas) 1994, the Gas Safety (Installation & Use) Regulations, the Building Regulations issued by the Department of the Environment.
- The fan motor of this cooker hood incorporates a thermal cut-out device, which will operate if the cooker hood is installed below the minimum heights recommended in this booklet, or if the motor becomes overheated. If the cut-out device is activated, switch off the fan motor and allow to cool. The cut-out device will reset itself when the fan motor has cooled sufficiently.
- This cooker hood has been designed and approved for installation over an electric hob with a maximum input of 7Kw or a gas-cooking appliance with a maximum input of 10Kw when fitted in accordance with the heights recommended in this booklet.
- Under no circumstances should you attempt to repair the appliance yourself. Repairs carried out by an inexperienced person may cause injury or more serious malfunctioning. Refer to your local Service Agent.

## GENERAL INFORMATION

This cooker hood is guaranteed and will give lasting service. The guarantee is only applicable if the hood has been installed in accordance with the installation instructions detailed in this booklet.

This cooker hood has been designed for use fixed beneath a wall cabinet or directly onto the wall and should be installed in accordance with the following fitting instructions.

The cooker hood can be used to duct odours to the outside or to filter the air within the kitchen. If it is used to filter the air within the

kitchen a (optional) charcoal filter will be required.

The hood is convertible to either function by the movement of a slider control, enabling the hood when installed in the ducting mode (extraction) to be converted to filtered (recirculation), in one easy step.

The installation instructions, which follow, give instructions on how and where this hood may be fitted. If already installed check with the installer that all the requirements have been met. If not then draw these to the attention of the installer who should be a qualified electrician or a competent person.

The manufacturer disclaims all liability for any damage or injury caused as a result of not following the instructions contained in the following text.

### **Important**

#### **ELECTRICAL CONNECTION**

Before connecting to the mains supply ensure that the mains voltage corresponds to the voltage on the rating plate inside the cooker hood.

#### **WARNING: DOUBLE INSULATED DO NOT EARTH**

This appliance is fitted with a 2-core mains supply cord and should be permanently connected to the electricity supply via a double pole switch having 3mm min. gap in each pole. A Switched Fuse Connection Unit to BS.1363 Part 4 fitted with a 3A fuse is a recommended mains supply connection accessory to ensure compliance with the Safety Requirements applicable to fixed wiring instructions.

Any permanent electrical installation must comply with the latest I.E.E. Regulations and local electricity board regulations. For your own safety this should be undertaken by a qualified electrician or competent person e.g. your local Electricity Board, or a contractor who is on the roll of the National Inspection Council for Electrical Installation Contracting (NICEIC).

#### **WARNING:**

**INCORRECT INSTALLATION COULD AFFECT THE SAFETY OF THIS COOKER HOOD.**

#### ***SWITCH "OFF" THE COOKER HOOD AT THE SUPPLY CONNECTION UNIT BEFORE CARRYING OUT ANY KIND OF MAINTENANCE OR CLEANING.***

This appliance conforms to BS.800: 1988 and EEC Directive No 87.308 regarding suppression of radio and television interference.

Note: CE Marking certifies that this appliance complies with the requirements laid down in EEC Directive 89/336 (Electromagnetic Compatibility) and EEC Directive 73/23 (Low Voltage).

### **INSTALLATION INSTRUCTIONS**

#### **Unpacking**

Care should be taken when unpacking the cooker hood to ensure that the items supplied below are not thrown away with the box.

- 4 - Plastic rawl plugs
- 4 - Fixing screws
- 1 - 100mm ducting Spigot
- 1 - 100mm blanking plate
- 1 - User Handbook

#### **Positioning**

When installed above an electric cooking appliance the minimum distance between the surface of the hob elements and the lower grille of the cooker hood must be 650mm.

When installed above a gas cooking appliance the minimum distance between the surface of the hob pan supports and the lower grille of the cooker hood must be 700mm.

**This cooker hood is not suitable for installation above a cooking appliance with a high-level grill.**

The distance between the underside of adjoining wall cabinets and the worktop must not be less than 420mm.

#### **Wall Fitting**

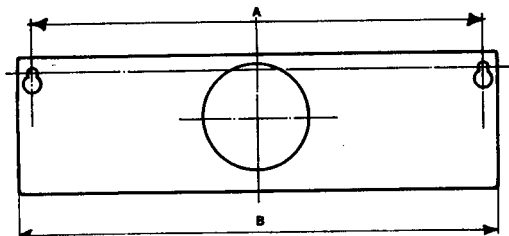
The cooker hood is fitted to the wall using the keyhole slots in the back of the hood and the hood may be fitted to any rigid vertical surface. All the fittings required for installation are contained in a polythene bag inside the carton.

**IMPORTANT:** Before installation check the wall to which the cooker hood is to be fitted

for electric cables, water pipes or gas pipes before drilling.

If it is necessary to fix the hood to a hollow construction plaster or partition board structure then it must be sufficiently reinforced to be quite rigid in the area of the cooker hood mounting screws.

Using the drawing as a guide, mark the positions on the wall for the two 8mm holes, 284mm either side of the vertical line (A) on the wall. Insert two rawl plugs and the two 4.2x44.4mm screws leaving 5mm untightened. Open the metal grille panel, hook the hood on to the screws using the keyholes and fully tighten the screws.



It is important to allow a space above the cooker hood (if it is to be fitted under a wall cabinet or similar) to enable it to be lifted on/off the screws for subsequent decorating or service.

When drilling the holes for the wall fixing screws care must be taken to ensure that they are quite level.

**If the hood is to be screwed to a hollow plaster or partition board structure then the plastic rawl plugs provided must not be used. (Special rawl plugs are available for hollow plaster and partition board walls from DIY or Builders Merchants).**

Once the holes have been drilled insert the screws and tighten to a distance of 5mm.

It is necessary to remove the grille panel before the cooker hood can be installed. To remove the grille panel press inwardly on the two slide catches; the grille will then hinge open at the rear. Slide one edge of the grille forward to free it from the guides in the side of the casing. The keyhole fixing slots are visible in the top corners of the back panel.

Hook the hood onto the screws using the keyhole slots and then tighten the screws to secure the hood to the wall.

**Ensure that the cooker hood is correctly located before letting go.**

To refit the grille onto the cooker hood, insert the left hand hinge pin into the hole in the left hand side of the casing; then slide the right hand hinge pin into the guide over the stop position. Close the grille and secure using the two slide catch bolts.

### **Fitting to a Wall Cabinet**

Before fitting the cooker hood beneath any type of wall cabinet, ensure that it will be firmly fixed to the wall in accordance with the manufacturers fitting instructions.

Place the wall cabinet on the floor, under side facing upwards. Position the hood upside down on the wall cabinet. Pilot drill (through the holes inside the hood) the underside of the cabinet and secure the hood to the cabinet using four 3.5x16mm screws (not supplied).

### **Ducting Fitting**

The cooker hood is supplied in the recirculation (filtered) mode with the charcoal filter fitted. To convert the hood into the extraction (ducting) mode, remove the charcoal filter and slide the change-over lever into the ducting position.

Fit the blanking plate supplied into the aperture that is not going to be used for the ducting and fit the ducting spigot into the other aperture and seal to form an airtight connection.

To fit the ducting spigot and blanking plate into the aperture, align the interlocking lugs on the fitting at 9 o'clock with the recesses in the aperture and inserting the fitting, turn it clockwise to 12 o'clock

The ducting used must be 100mm diameter and where flexible ducting is fitted it should not be turned through very tight bends as this could impair the performance of the cooker hood. The ducting used must be manufactured from fire retardant material produced to BS.476, DIN 4102-B1.

***(The maximum length of ducting including one 90° bend should be 3 metres, to be reduced by 1 metre for each 90° bend installed in the duct run).***

### **Recirculation**

The cooker hood is supplied in the recirculation (filtered) mode with the charcoal filter fitted.

To fit the charcoal filter, open the grille using the slider catches and the grille will hinge down. Slide one edge of the grille forward to free it from the guides in the side of the casing. Place the charcoal filter over the motor support aligning the three interlocking lugs with the slots around the hole in the centre of the charcoal filter. Insert the round disk into the hole in the centre of the charcoal filter and turn clockwise until the filter is securely fixed to the motor support.

When installing the cooker hood ensure that the outlet on the top of the hood is free from obstructions to allow the purified air to pass from the hood back into the kitchen.

The charcoal filter cannot be cleaned. It should be replaced at least once every three months or more frequently if the cooker hood is used for more than three hours a day.

***IMPORTANT: There could be a possible fire hazard if the charcoal filter is not replaced as recommended in these instructions.***

#### **OPERATING INSTRUCTIONS**

The cooker hood functions are controlled by two slide switches located on the right hand side of the cooker hood and a conversion slider control inside the hood.

**Ensure the cooker hood is switched on at the supply connection unit.**

#### **WORKTOP LIGHTING**

The switch marked with the lamp symbol and numbered 0-1 controls the worktop illumination.

Position -1 indicates the light is operating.

#### **FAN**

The switch marked with the fan symbol and numbered 1-2-3 controls the fan.

Position -1 should be selected when simmering or when using one pan.

Position -2 should be selected for normal cooking up to four pans.

Position -3 should be selected when frying or cooking food with strong odour.

To obtain the best performance it is advisable to switch on the hood a few minutes before you start cooking and leave it running for approximately 15 minutes after finishing.

The slider control is located inside the hood behind the grille and converts the diffuser from ducting (extraction) to recirculation (filtered).

#### **Do's and Don'ts**

Do take extra care when frying.

Do keep heating areas on your hob covered over with pots and pans when using the hob and hood simultaneously.

#### **Don'ts**

Don't leave naked flames under the hood.

Don't leave frying pans unattended during use as over heated fats and oils may catch fire.

Don't do Flambé cooking under this hood.

#### **MAINTENANCE AND CLEANING INSTRUCTIONS**

***SWITCH "OFF" THE COOKER HOOD AT THE SUPPLY CONNECTION UNIT BEFORE CARRYING OUT ANY KIND OF MAINTENANCE OR CLEANING.***

#### **WORKTOP LIGHTING**

If the lamp fails to function at any time first check that it is fully screwed into the holder.

*The replacement lamp should be 220-240 volt 40 watt with a clear cylindrical shaped lens and small Edison (E14) screw thread cap.*

#### **CLEANING**

For your own safety and in the interests of hygiene your cooker hood needs to be kept clean. A build up of grease or fat from cooking could cause a fire hazard.

Never use excessive amounts of water when cleaning particularly around the control panel area.

The metal casing and grille assembly should be cleaned at least once a month to keep it looking like new. Wipe over the hood with a soft cloth wrung out in hot water and containing a mild household cleaner and dry with a soft cloth.

Always wear protective gloves when cleaning the cooker hood.

**NOTE: Never use scouring pads or abrasive cleaners as they might scratch or damage the surface.**

## SYNTHETIC GREASE FILTER

The grease filter is fitted to absorb grease and dust during cooking to help keep the appliance clean inside.

The synthetic paper grease filter cannot be cleaned. It should be replaced at least every three months or more frequently if the hood is used for more than three hours a day.

To replace the grease filter open the grille panel by pressing inwardly on the two slider catches and the grille can then be hinged open from the rear. Slide one edge of the grille forward to free it from the guides in the side of the casing. Push the wire retaining clips to the side and remove.

Clean the grille and clips before refitting the replacement paper grease filter and the wire clips.

***IMPORTANT. There could be a possible fire hazard if the grease and charcoal filters are not replaced as recommended in these instructions.***

## REQUESTING SERVICE

In the event of your extractor requiring service telephone **Caple Service on: 0870 241 1142**. Before calling out a Service Engineer, please ensure you have read the details under the heading "Before Calling a Service Engineer" and have the following information available.

The name of the Company from whom you purchased the appliance:

-----

Your Name: -----

Address: -----

-----

-----

Post Code: -----

Model Number of appliance: -----

Serial Number: -----

Date of purchase: -----

-----