

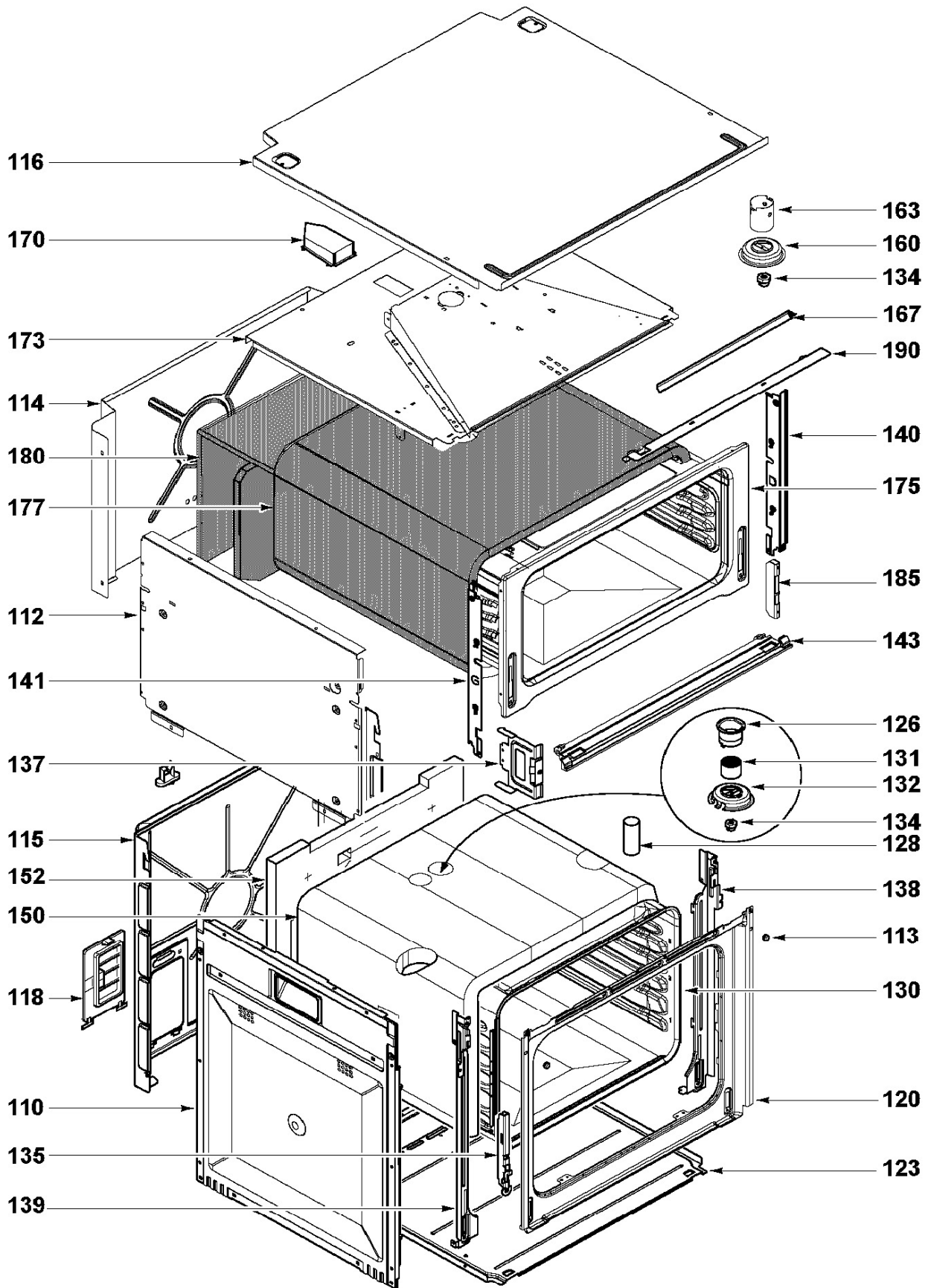


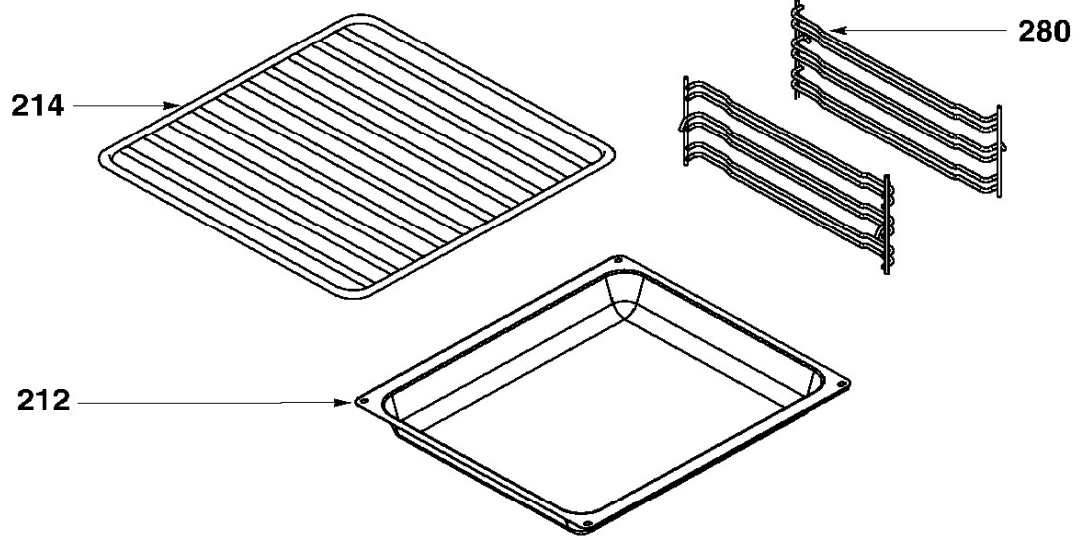
C3501

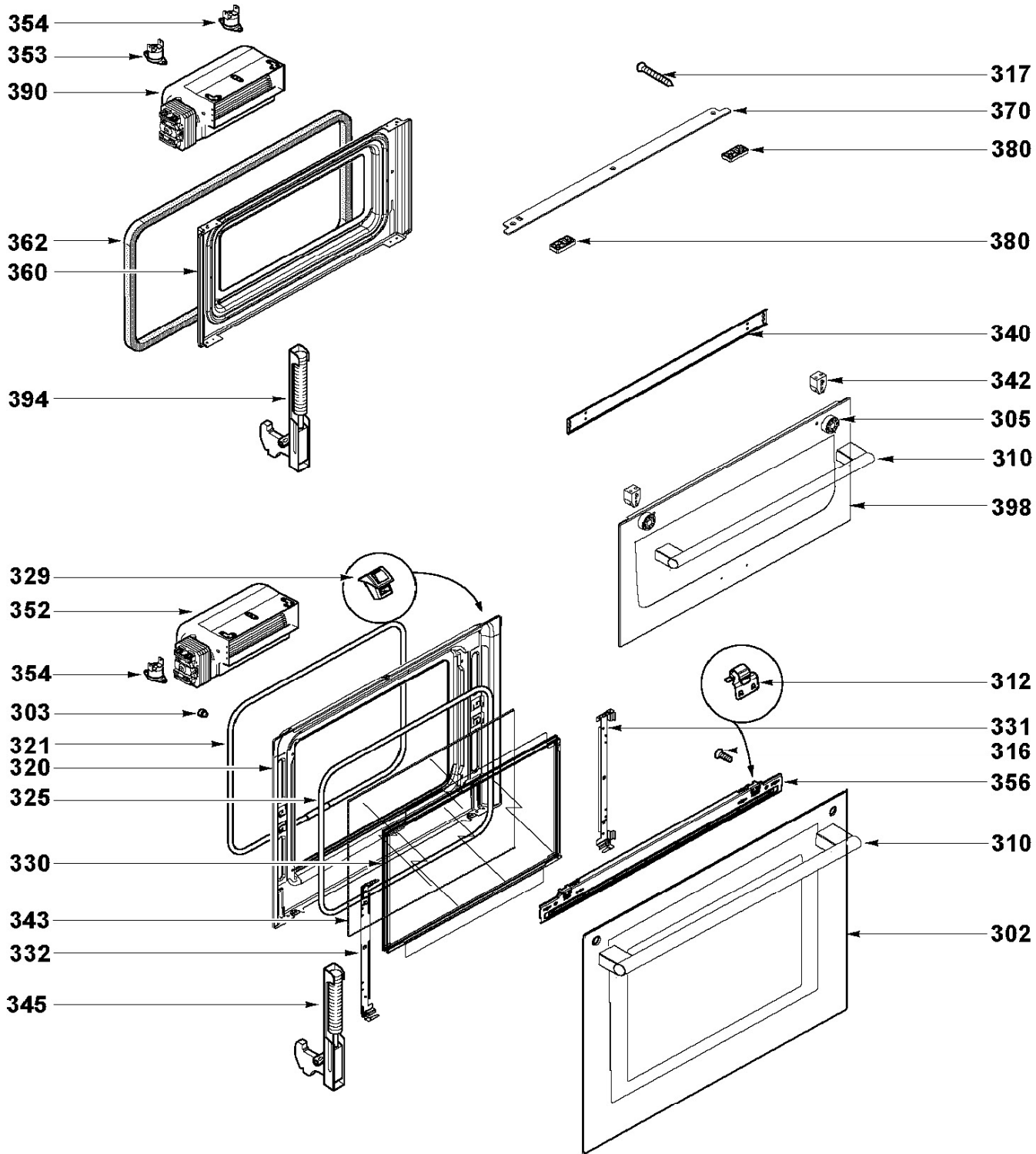
Caple Pyrolytic Double Oven

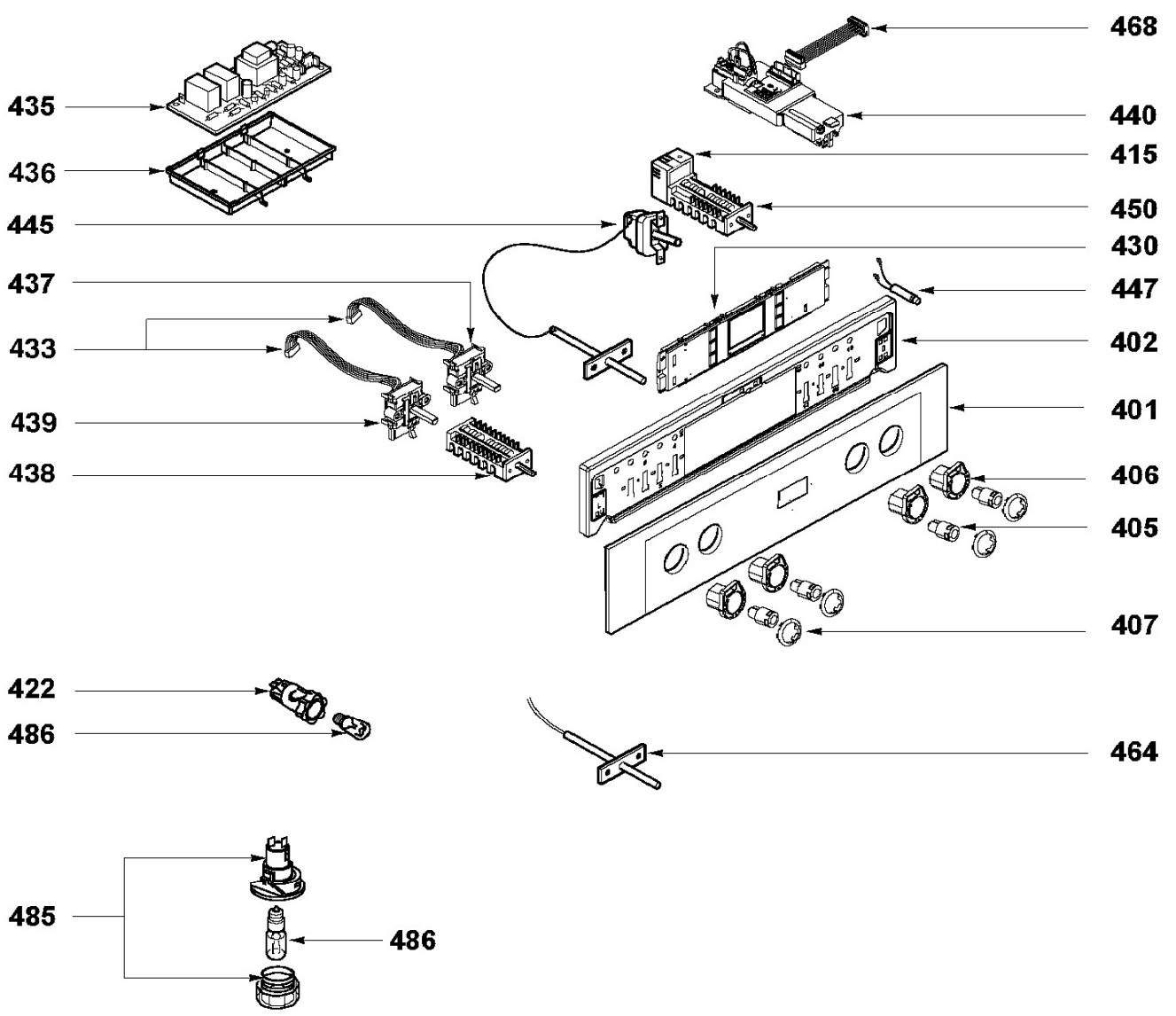


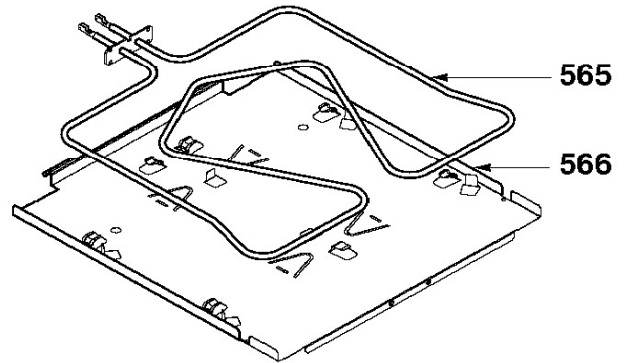
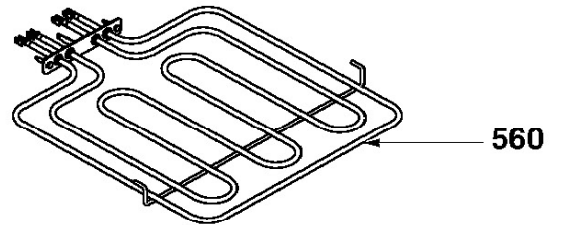
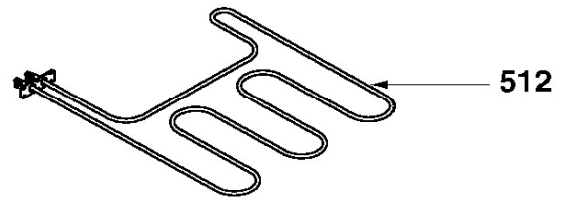
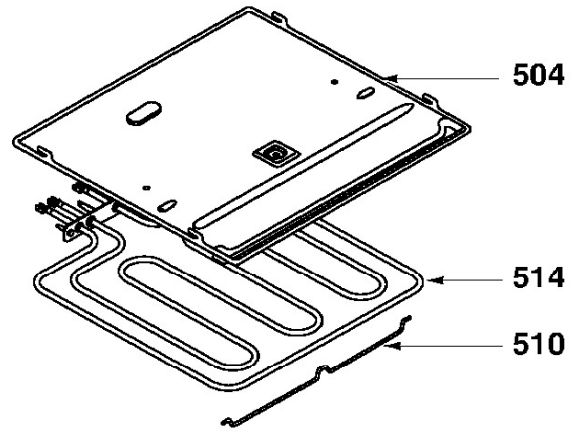
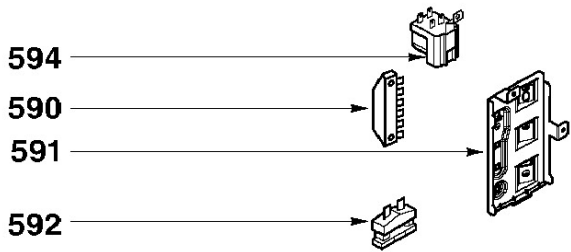
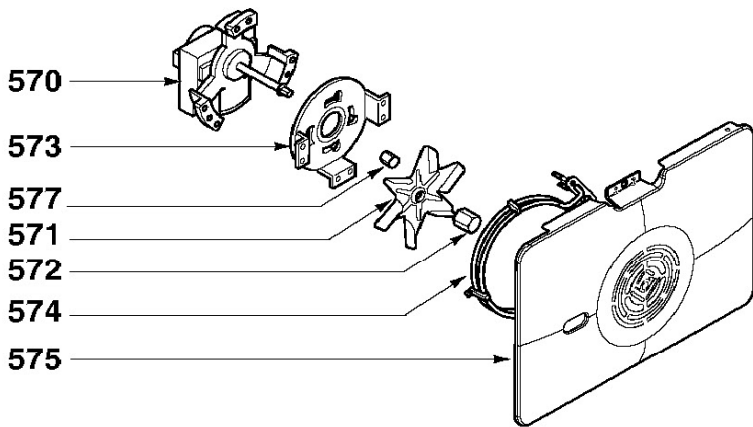
Technical information













C3501 - Caple Double pyrolytic oven

Item	Part Code	Description
0	75X8555	TRIGGER GUARD
0	87X5828	COOKING GUIDE
110	74X2302	SIDE, CLADDING
112	74X4462	SIDE, CLADDING
113	74X3852	DISASSEMBLY STOP
114	74X4476	REAR COVER
115	74X4479	REAR COVER
116	74X4475	UPPER COVER
120	72X0685	FACADE, OVEN
123	74X2384	PARTITION BOTTOM/LOWER
126	74X2308	FLUE
128	74X2331	VACUUM EXTRACTION PI
130	71X3718	CAVITY
131	72X4095	CATALYZER
132	74X2307	MOUNTING BASE
134	77X8589	ACORN NUT
135	74X2341	BRACKET
137	74X3201	CAVITY CLAMP
138	74X4473	RIGHT COLUMN
139	74X4472	LEFT COLUMN
140	AS0005689	RIGHT COLUMN
141	AS0005690	LEFT COLUMN
143	70X0897	LOW DOOR CONN.BLOCK
150	74X2338	SURR HEAT SHIELD
152	74X2339	REAR HEAT INSULATOR
160	77X8564	MOUNTING BASE
163	77X8565	FLUE
167	79X8855	DOOR SEAL
170	78X2272	UPPER AIR GUIDE
173	71X0191	TOP
175	72X8739	CAVITY
177	79X8260	SURR HEAT SHIELD
180	79X8261	REAR HEAT INSULATOR
185	72X0463	BRACKET
190	74X4655	GRILL, AERATION
212	71X4395	DISH FLAT



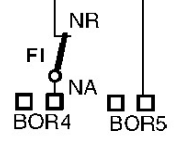
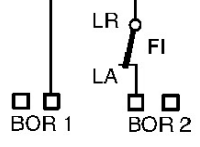
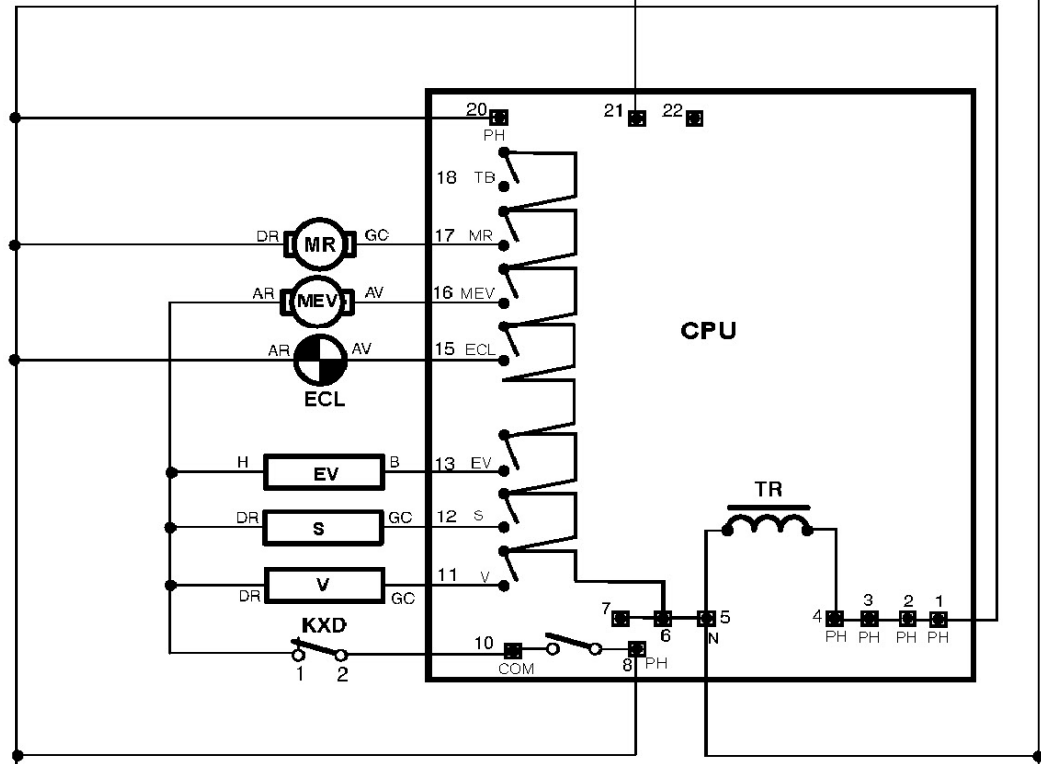
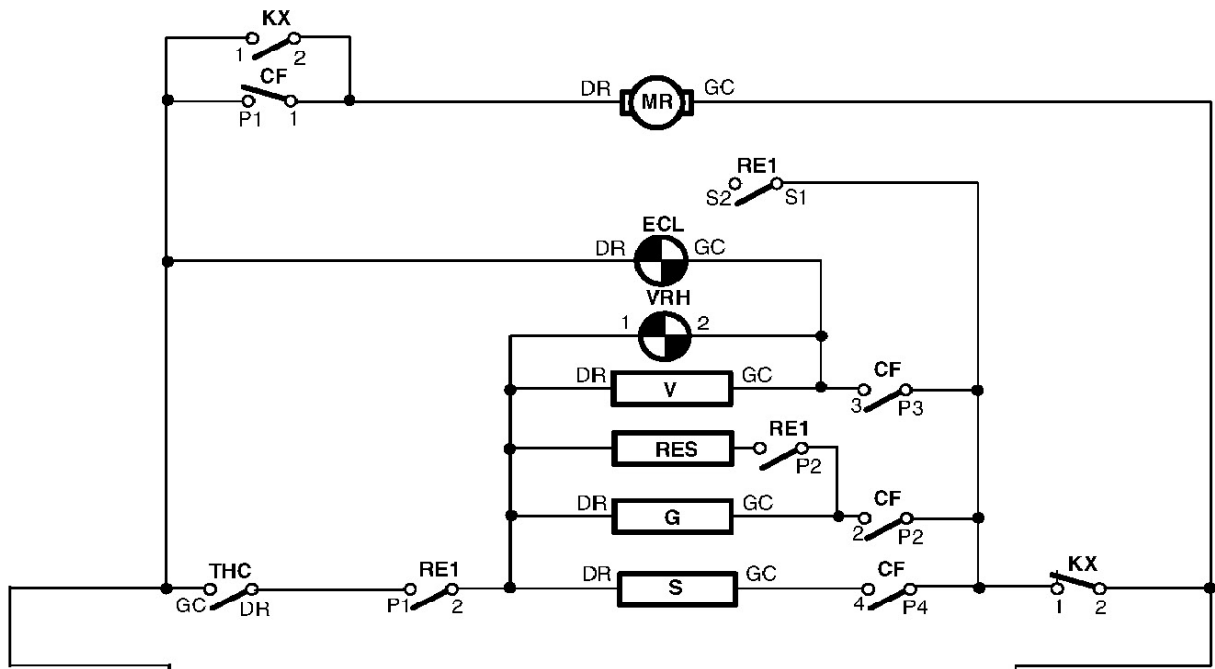
C3501 - Caple Double pyrolytic oven

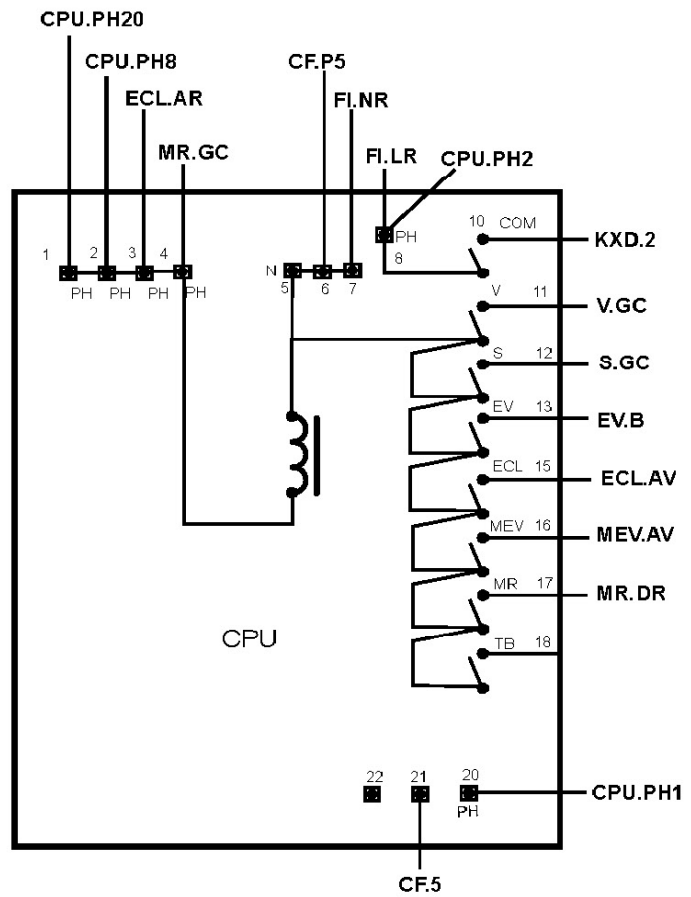
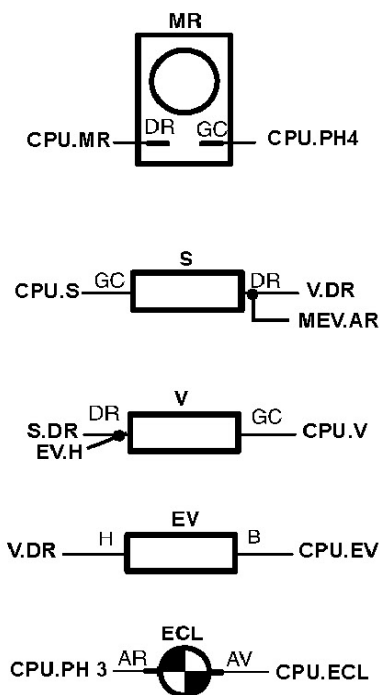
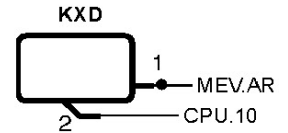
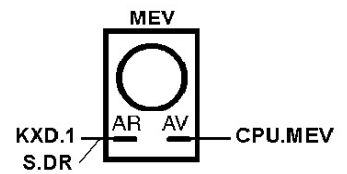
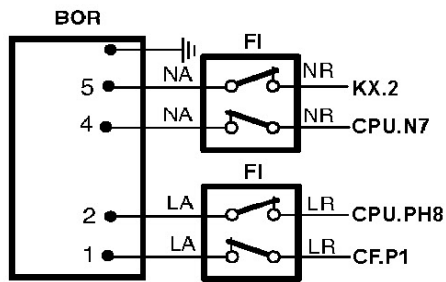
Item	Part Code	Description
214	74X2312	GRID
280	72X9900	UPPER SHELF SUPPORT
302	AS6004808	DOOR EXTERIOR GLASS
303	76X4624	STOP
305	72X9747	WASHER
310	70X0914	HANDLE ASSEMBLY
312	74X2381	WALLET OF CLIPS
316	71X1191	HANDLE ATTACH SCREW
317	79X8311	INNER DOOR SCREW
320	74X3326	DOOR BACK
321	74X3787	SEAL, SHIELD
325	74X8994	DOOR SEAL
329	74X4859	BOLT
330	74X6806	SHIELD
331	74X8185	ATTACHING CLAMP
332	74X8184	ATTACHING CLAMP
340	72X0729	SMALL BAR
342	79X7774	SPACER
343	74X6805	WINDOW SHIELD
345	74X4349	DOOR HINGE
352	71X1539	FASCIA TURBINE
353	74X2403	LIMITER TEMPERATURE
354	72X0994	LIMITER
356	74X4298	TOP DOOR RAIL
360	72X7737	INNER DOOR+WINDOW
362	71X3445	SEAL, FACADE
370	74X5560	AIR GUIDE
380	74X5559	RAISED SECTION
390	71X3193	FASCIA TURBINE
394	72X3866	DOOR HINGE
398	AS6004814	DOOR EXTERIOR GLASS
401	AS6004815	STRIP
402	AS6004816	COMPONENT SUPPORT
405	70X2365	CONTROL KNOB
406	71X0931	BOX
407	AS6004817	SKIRT, KNOB



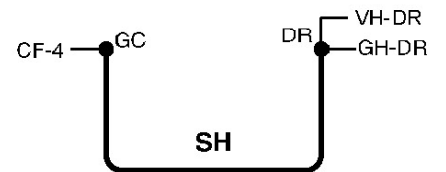
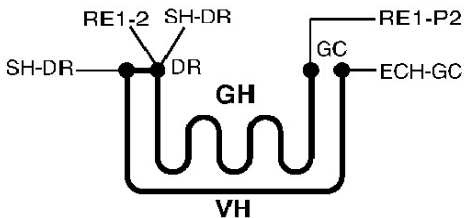
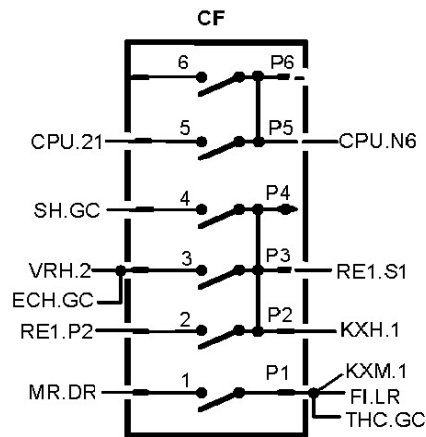
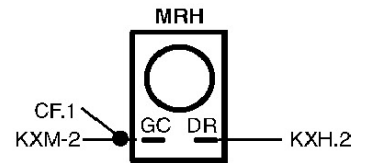
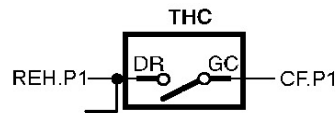
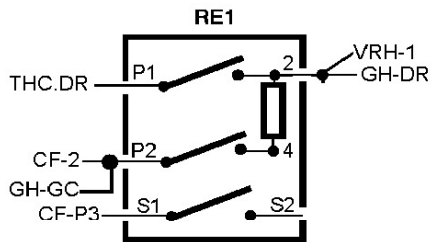
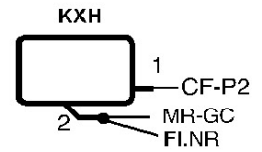
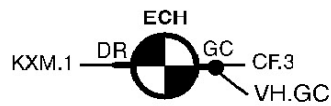
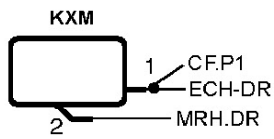
C3501 - Caple Double pyrolytic oven

Item	Part Code	Description
415	77X3657	CONTROLLER
422	72X5332	LIGHTING ASSEMBLY
430	70X2107	POWER CARD
433	72X0392	RIBBON CABLE
433	AS0009755	RIBBON CABLE
435	AS6004819	POWER CARD
436	AS0003013	CARD SUPPORT
437	72X0393	SELECTOR
439	AS6004834	SELECTOR
440	72X4984	LOCK ASSEMBLY
445	74X4646	OVEN THERMOSTAT
447	75X1481	INDICATOR
450	77X3280	SELECTOR, OVEN
464	74X4563	PROBE
468	72X7766	RIBBON CABLE
485	72X7529	LIGHTING ASSEMBLY
486	75X1493	BULB
504	78X2293	PROTECTOR DOME
510	77X0742	HOLDER
512	74X4464	BOTTOM ELEMENT
514	77X2921	RESISTOR, GRILL
560	74X2310	TOP/GRILL ELEMENT
565	74X3170	BOTTOM ELEMENT
566	74X2311	SUPPORT PANEL
570	74X5160	FAN-MOTOR
571	74X6900	TURBINE
572	76X6102	NUT, TURBINE
573	77X3517	VENTILATOR SUPPORT
574	77X2277	RESISTOR
575	74X2342	DIFFUSER
577	75X2037	SPACER
590	71X2835	MAINS TERMINAL BLOCK
591	74X2306	TERMINAL BOX SUPPORT
592	71X1930	CABLE GRIP
594	74X9733	NOISE FILTER -





BOR	: Terminal box	MTB	: Grill motor
CPU	: Power card	S	: Base plate
ECL	: Oven light	V	: Vault
FI	: Filter	EV	: Airing resistor
MEV	: Heating element motor	KXG	: Klixon
MR	: Motoventilator		



CFH : Selector oven	MRH : Motoventilator
ECH : Oven light	SH : Base plate
KXH : Klixon	V/G : Top / Grill element
KXM : Klixon	VH/GH : Top / Grill element
VRH/VV : Indicator of regulation	RE1 : Controller
VFH/VF : Indicator of furnance	THC : Thermostat

SELECTOR

