



WMI2004

Caple Integrated Washing Machine

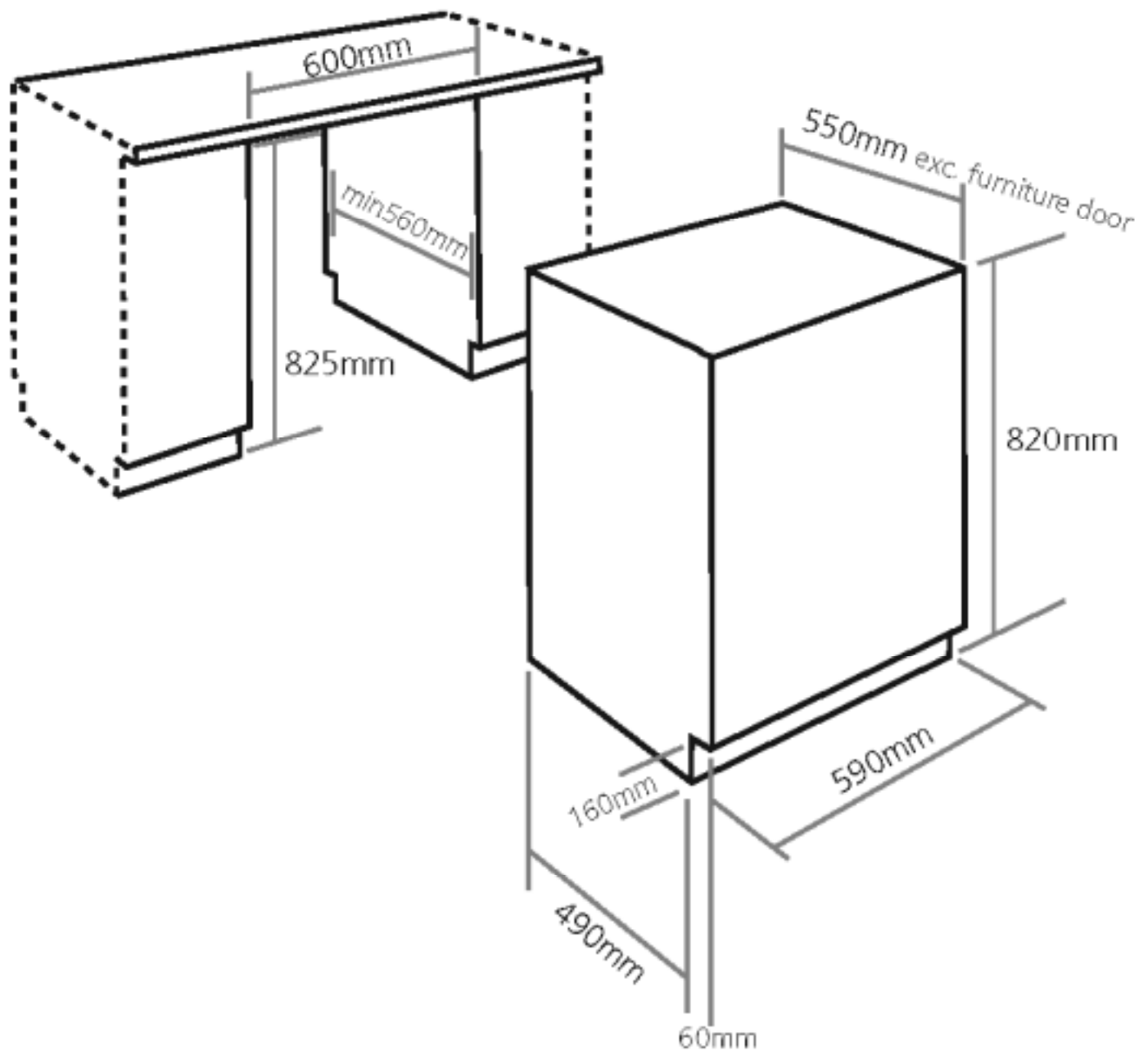


TECHNICAL INFORMATION



WMI2004

Caple Integrated Washing Machine



WMI2004

Caple Integrated Washing Machine

AFTER SALES SERVICE DATA

- Operating instructions : -
- Servicing guide : -

OVERALL DESCRIPTION

- Date of manufacture : 2009
- Standards : CE, IXP4
- Base frame : -
- Capacity : 7 kg
- Colour : -
- Width : 590 mm
- Net weight : 73 kg
- Gross weight : 78 kg
- Drum rotation speed : -
- Spinning : 1400 t/mn

ELECTRICAL DATA

- Supply voltage : 220/240 V
- Frequency : 50 Hz
- Maximum current density : 10 A
- Total electrical power : 2250W

WATER SUPPLY

- 3 way solenoid valve.

	V1	V2	V3	V4	V5
Flow rate (l/mn)					
Ohmic value (Ω)					

DRAIN PUMP

- Electrical power : -
- Flow rate : -
- Ohmic value at 20 °C : -

HEATING

- Immersion heater
 - Power : 2000 W
 - Ohmic value at 20 °C : -

PROGRAMMING

- Power PCB type : -
- Programming type : -
- Test programme :

DRIVE

- Induction motor : -
 - HS winding value : -
 - Main : -
 - Auxiliary : -
 - LS winding value : -
 - Brown and yellow : -
 - Green and Yellow : -
 - Brown and Green : -
 - Starting capacitor : -
- Synchronous motor : Yes
 - Stator winding value : -
 - Rotor winding value : -
 - Tacho generator : -

TEMPERATURE CONTROL

- By adjustable thermostat : YES
- A ___ k Ω potentiometer enables the selection of cold temperature at 90 °C using the module that reads the information through the sensor.
- A ___ position switch (cold, 30 °C to 90 °C) controlling a ___ k Ω \pm ___ % thermistor at ___ °C.
-

SECURITIES

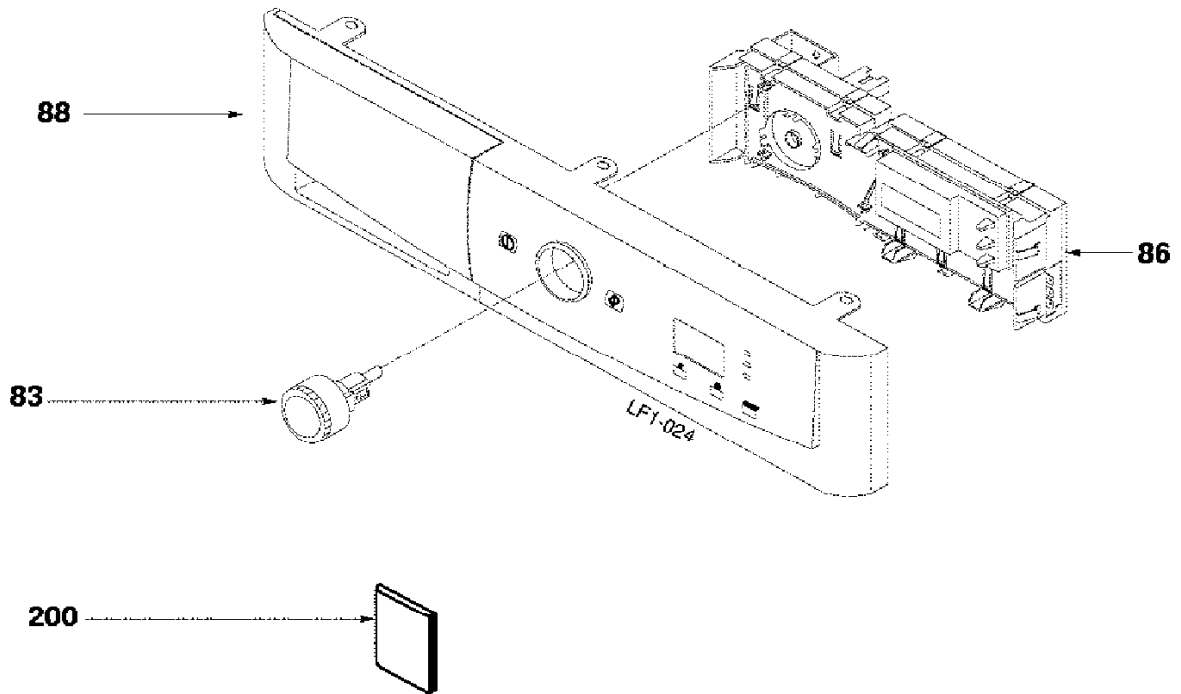
- Heating
 - A resettable 92 °C thermostat : NO
 - A thermal device locks the door during the washing cycle. Its action extends about 2 minutes after the machine has stopped.
 - A thermal device locks the door during the drainage / spinning operations.

PERFORMANCE

Temperatures	Water (l)	Time (mn)	Power (kW)
At 60°C	54	130	1,33

WMI2004

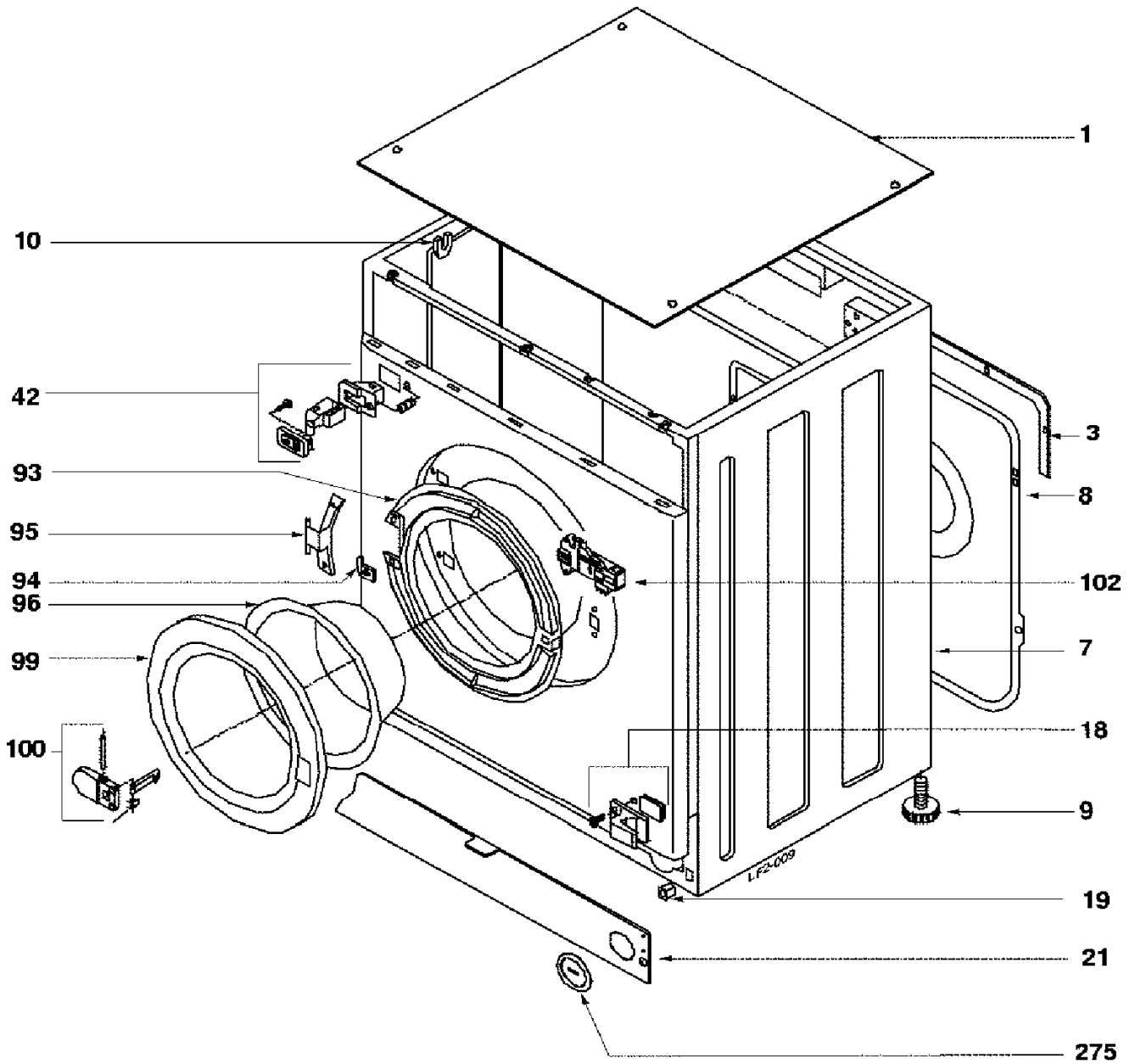
Caple Integrated Washing Machine



LF1-024

WMI2004

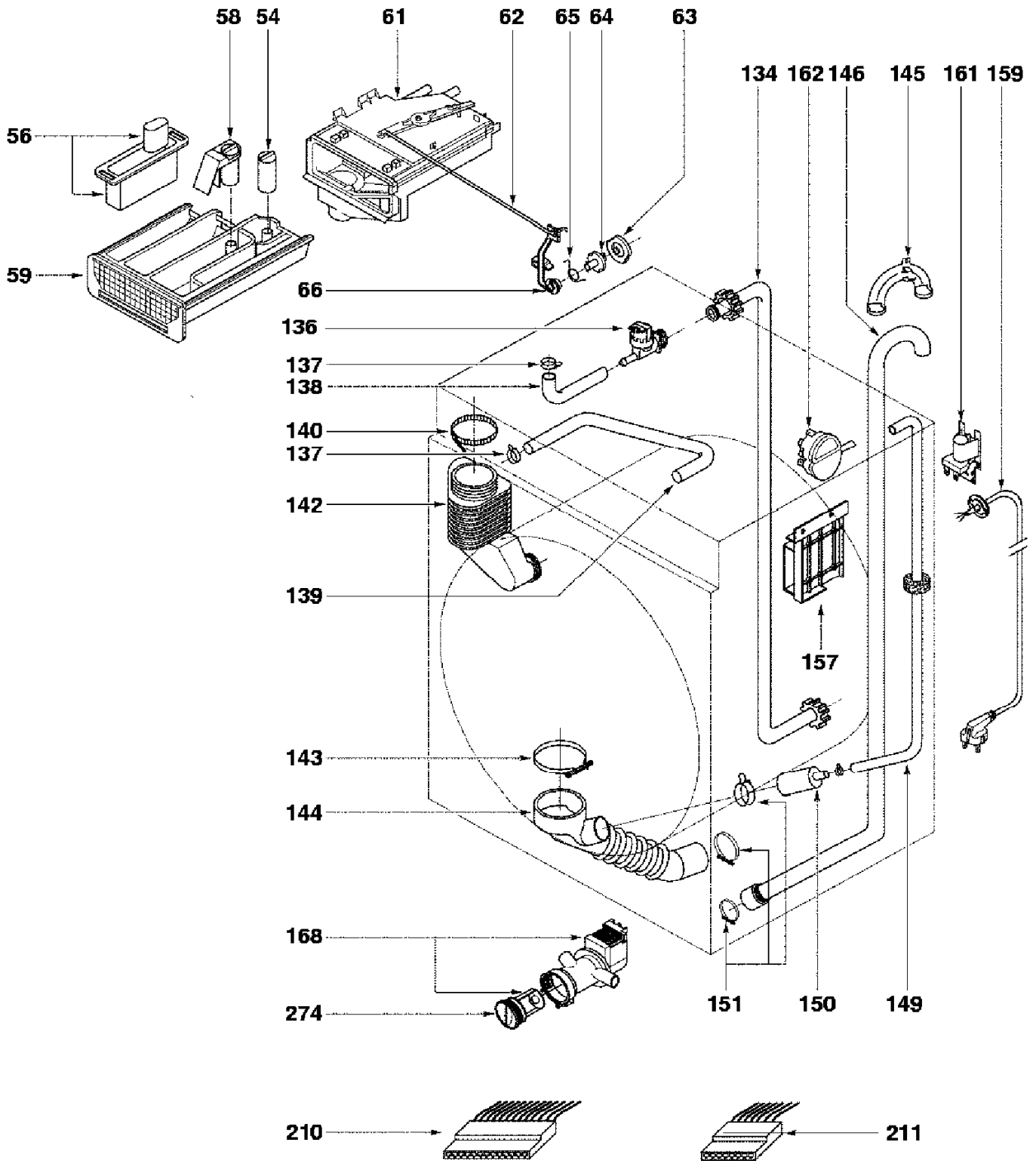
Caple Integrated Washing Machine



LF2-009

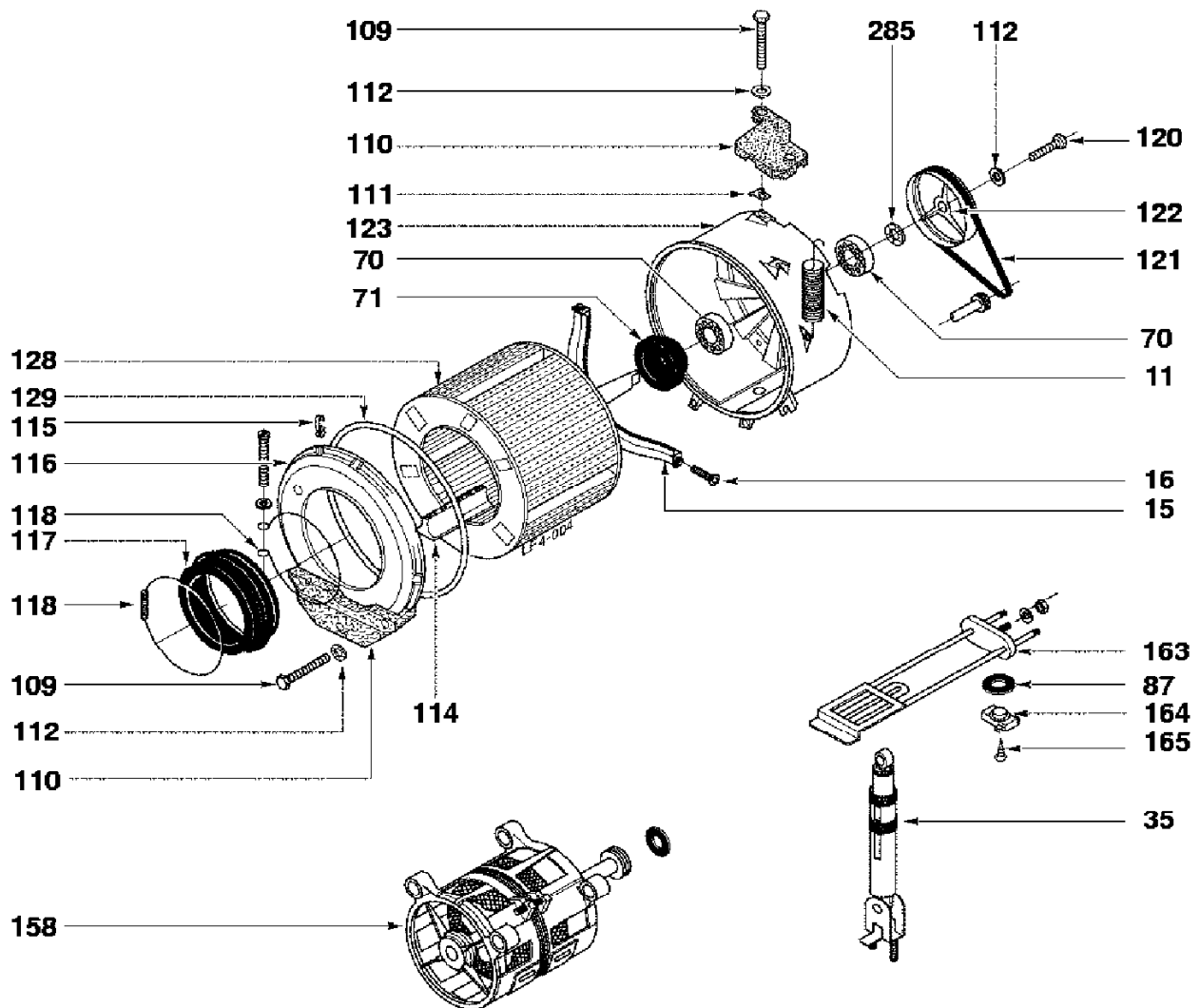
WMI2004

Caple Integrated Washing Machine



WMI2004

Caple Integrated Washing Machine





WMI2004

Caple Integrated Washing Machine

REP.	REF. SAV	DESIGNATION	REP.	REF. SAV	DESIGNATION
SR	96X0994	FLERIE CIRCUITRY	200	85X1025	NOTICE D'UTILISATION INSTRUCTIONS FOR USE
83	52X4675	BOUTON PROGRAMMATEUR PROGRAMMER KNOB			
86	52X6484	CARTE ELECTRONIQUE ELECTRONIC CARD			
88	52X6485	BANDEAU DE COMMANDE CONTROL PANEL			



WMI2004

Caple Integrated Washing Machine

REP.	REF. SAV	DESIGNATION	REP.	REF. SAV	DESIGNATION
SR	52X2181	GABARIT DE MONTAGE ASSEMBLY JIG	21	96X1020	PLINTHE PLINTH
SR	52X2182	KIT ENCASTREMENT BUILT-IN FITTING KIT	42	52X2178	FERMETURE DE PORTE DOOR CLOSER
1	55X9998	COUVERCLE >1000TRS COVER >1000TRS	93	52X2170	CONTRE PORTE DOOR BACK
3	55X9888	ENJOLIVEUR ARRIERE REAR TRIM	94	52X1711	RENFORT CHARNIERE R'FORCEMENT, HINGE
7	52X2151	HABILLAGE BLANC WHITE CASING	95	52X2171	CHARNIERE DE HUBLOT WINDOW HINGE
8	55X9889	TOLE ARRIERE REAR PLATE	96	55X9900	HUBLOT WINDOW
9	52X0077	PIED REGLABLE ADJUSTABLE LEG	99	52X2172	CADRE DE HUBLOT WINDOW SURROUND
10	55X9895	EMBOUT END	100	96X1004	MANETTE CONTROL KNOB
18	52X2175	CHARNIERE DE PORTE =(X2) DOOR HINGE =(X2)	102	52X0984	SECURITE DE PORTE DOOR SAFETY DEVICE
19	52X2522	TAQUET DOG	275	52X0861	BOUCHON PLUG



WMI2004

Caple Integrated Washing Machine

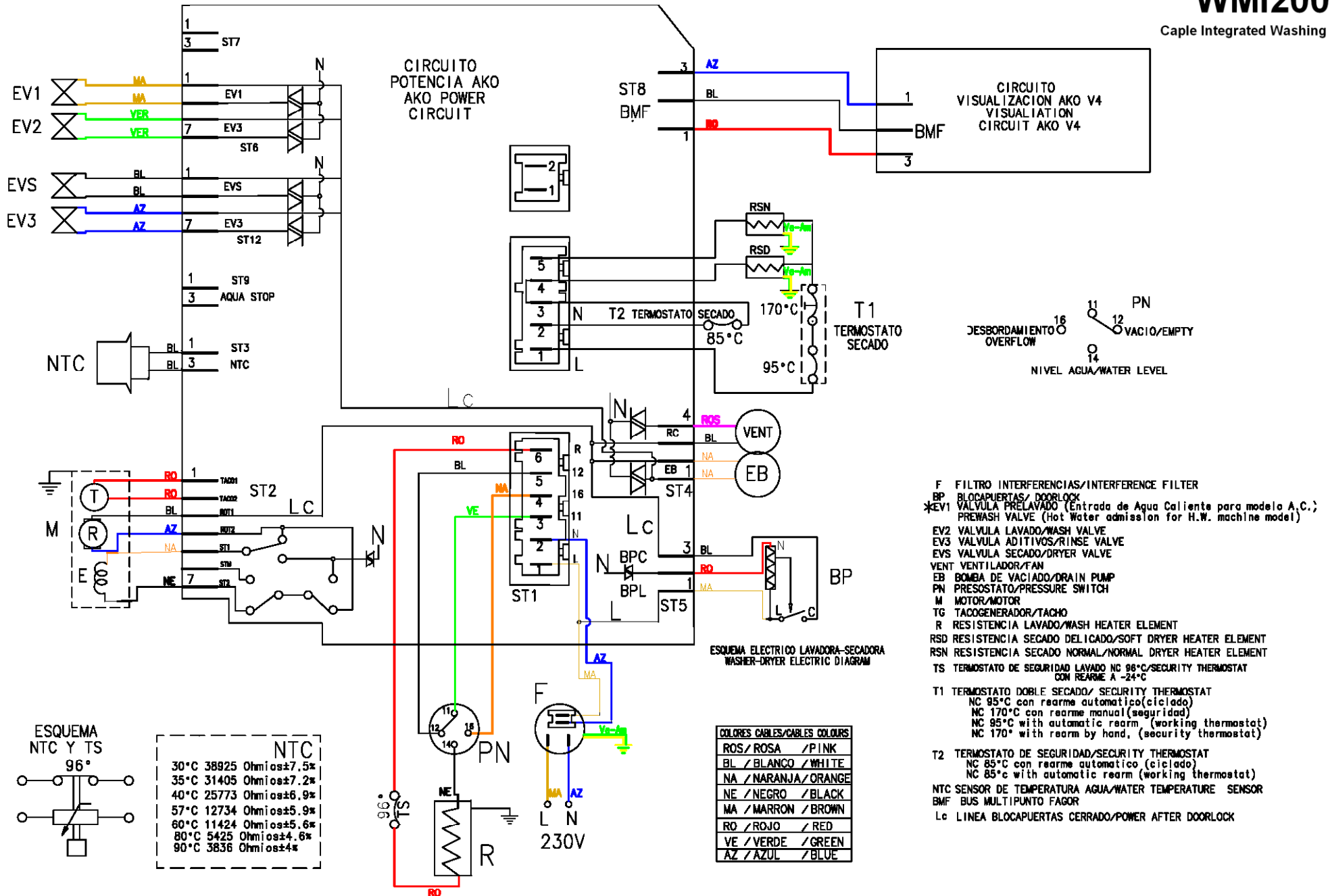
REP.	REF. SAV	DESIGNATION	REP.	REF. SAV	DESIGNATION
56	52X0010	KIT LESSIVE LIQUIDE KIT, LIQUID DETERGE	144	52X1120	DURIT CUVE/POMPE PUMP TANK HOSE
58	55X9916	SYPHON SYPHON	145	55X2845	SUPPORT TUYAU PIPE SPT
59	52X0094	TIROIR A LESSIVE WASHING POWDER DRAWE	146	41X0115	TUYAU PIPE
61	52X0095	BOITE A PRODUITS DETERGENT BOX	149	55X9910	TUYAU PRESSOSTAT PRESSURE SWITCH PIP
134	55X9904	TUYAU D'ALIMENTATION SUPPLY PIPE	150	55X9911	MANCHETTE SLEEVE
136	52X3570	ELECTROVANNE 3VOIES ELEC.VALVE 3-WAY	151	55X9981	ENS.BLOCAGE TUYAU PIPE LOCKING ASSEMBL
137	55X5668	COLLIER FIXATION SKIRT, ATTACHING	159	52X1971	CORDON SECTEUR CORD, MAINS
138	55X9905	TUYAU DE LAVAGE WASHING PIPE	161	52X3571	FILTRE ANTIPARASITES FILTER NOISE
139	52X0103	TUYAU ANTI CONDENS. ANTI CONDENSATION PI	162	95X6637	PRESSOSTAT PRESSURE SWITCH
140	52X0011	COLLIER FIXATION SKIRT, ATTACHING	168	52X3572	POMPE DE VIDANGE PUMP, DRAIN
142	55X9906	DURIT BOITE CUVE FLEX HOSE, TUB BOX	274	52X3871	FILTRE FILTER
143	55X9907	COLLIER FIXATION SKIRT, ATTACHING			



WMI2004

Caple Integrated Washing Machine

REP.	REF. SAV	DESIGNATION	REP.	REF. SAV	DESIGNATION
SR	52X1296	ECROU NUT	118	55X9946	COLLIER FIXATION SKIRT, ATTACHING
11	55X9941	RESSORT SUSPENSION TANK SUSPENS.SPRING	118	52X3048	COLLIER FIXATION JOINT HUBLLOT SKIRT, SEAL ATTACHING
15	52X3886	CROISILLON AVEC AXE SPIDER WITH PIN	120	55X9954	ECROU NUT
16	55X9968	VIS FIX.CROISILLON TORX CROOS BAR FIX. SCREW TORX	121	52X0032	COURROIE 1184J5 BELT 1184J5
35	52X0093	AMORTISSEUR 120 SHOCK ABSORBER 120	122	52X0033	POULIE TAMBOUR DRUM PULLEY
70	52X0883	ROULEMENT BEARING	123	52X1687	CUVE PLASTIQUE 47L TUB, PLASTIC 47L
71	55X9980	BAGUE D'ETANCHEITE 800/1000 SEALING BUSH 800/1000	128	52X1299	TAMBOUR DRUM
87	55X9930	JOINT DE THERMOSTAT THERMOSTAT SEAL	129	55X9987	JOINT FLANC DE CUVE SEAL TUB SIDE
109	52X0210	VIS FIX.LEST BALLAST FIX. SCREW	158	52X3601	MOTEUR MOTOR
110	55X9936	LEST FRONTAL FRONT-END BALLAST	163	52X2180	THERMOPLONGEUR IMMERSION HEATER
110	52X1297	LEST SUPERIEUR 45L 16Kg C'WT., UPPER 45L 16Kg	164	55X9996	SONDE DE TEMPERATURE 96%-24 °C PROBE, TEMPERATURE 96%-24 °C
111	55X9939	PLAQUE DE FIXATION ATTACHMENT PLATE	164	52X1684	SONDE DE TEMPERATURE 96 °C/50 °C PROBE, TEMPERATURE 96 °C/50 °C
114	52X1298	OMEGA OMEGA BRACKET	165	57X1832	VIS SCREW
115	55X9953	CLIPS = X1 CLIP = X1	285	52X0119	RONDELLE WASHER
116	52X1311	COUVERCLE DE CUVE COVER, TANK			
117	52X1659	JOINT HUBLLOT SEAL, WINDOW			



• Procedure for activating the (T.S.S.) Test programme V1 Circuit

1. ON-OFF switch turned off
2. Press the start-pause button (keep pressed until step no. 5)
3. Press ON-OFF switch until the stop led turns on
4. Press the select spin button until the wash, rinse and Stop leds turn on
5. Release the start-pause and select spin buttons at the same time
6. Press the spin button and the leds flash intermittently indicating how the circuit is configured
7. Press and hold down the start-pause button for several seconds until the skip spin time delay and intensive wash leds turn on
8. When the skip spin, time delay and intensive wash leds turn off, it enters the phases of activating the different electromechanical components

N°	Indicator activated	Verification	Time
1	Led 3h	The pre-wash electrically operated valve is activated	15 s.
2	Led 6h	Emptying +Spin ramping up	6 min.
3	Led 9h	The wash electrically operated valve is activated until the wash level is reached	Pressure switch level
4	Flot led	The element is activated and heats up until the NTC reaches 40°C	Heating
5	Intensive Wash led	The three electrically operated valves are activated The drainage pump is activated	3 s. 30 s.
6	Led 1200 + Stop	End of test programme	

Configuring a V1 Circuit

1. Press the start-pause button (keep pressed until step no. 4)
2. Press ON-OFF switch, turning on the led: Stop
3. Press the Select Spin button
4. Release the start-pause and select spin buttons at the same time

The three programme phase leds turn on (Wash, Rinse and Stop) and water enters through the detergent tray for approximately 3"

5. Press the Select Spin button and the leds on the control panel light up, indicating how the model under test is configured

Configuration:

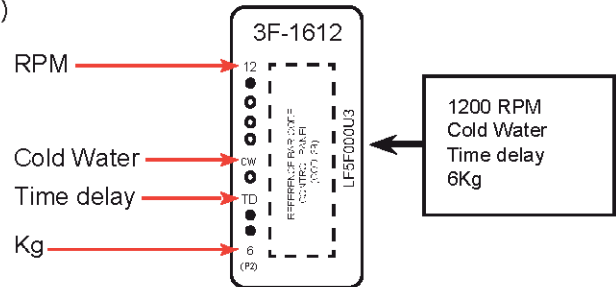
Three/four parameters must be configured (with/without delay)

- Kilograms (5-6-7kg)
- Speed in revolutions
- Cold Water / Hot Water
- Time delay mechanism (depends on the model)

Configuration:

Three/four parameters must be configured (with/without delay)

- Kilograms (5-6 Kg)
- Speed in revolutions
- Cold Water / Hot Water
- Time delay mechanism (depends on the model)



1. To configure the kg set the programme selector to:

- Programme No.1 (P1) for 5kg washers wash led on
- Programme No. 2 (P2) for 6kg washers rinse led on

2. To configure the speed in R.P.M. (see bar code)

- Press the select spin button until the led or leds indicted in the bar code label turn on

3. To configure AF (Agua Fría) Cold Water / Hot Water (see bar code)

- Cold Water – time delay and extra rinse leds not lit
- Hot Water – time delay and extra rinse leds turned on

4º To configure RH (Retardo Horario) Time Delay (see bar code)

- Intensive and Flot leds turned on

Important: The circuit configuration must coincide with the indications next to the bar code. This label is attached to the upper part of the detergent drawer body (see example)

SAFETY DISPLAYS									
FAULT MODES	WASING MACHINES WITH AND WITHOUT LCD DISPLAY								WITH DISPLAY CODE ON SCREEN
	LEDS TURNED ON					LEDS TURNED ON PROGRAMMEPHASE			
	SPIN	SKIP	INTENSIVE	FLOT	EXTRA RINSE	WASH	RINSE	STOP	
WATER INTAKE						X	X		F01
DRAINAGE PUMP or PN=FULL in PROGRAMME STOP							X	X	F02
UNBALANCED						X	X	Y	F03
DOOR LOCK						X		Y	F04
NTC	X					X	X	X	F05
DOES NOT HEAT (WASH ELEMENT)		X				X	X	X	F06
OVERFLOW			X			X	X	X	F07
MOTOR				X		X	X	X	F08
MOTOR INVERSION					X	X	X	X	F09
INTERNAL DOMOTIC FAULT				X	Y	X	X	X	F10
EXTERNAL DOMOTIC FAULT	Y	X				X	X	X	F11
BMF CONNECTION BUS FAULT			Y	X		X	X	X	F11