

QWM1

Q' Integrated Washing Machine

TECHNICAL INFORMATION

WASHING MACHINE

QWM1
QWM1
905473589



TECHNICAL FEATURES

AFTER SALES SERVICE DATA

- Operating instructions : 85X2790
- Servicing guide : -

OVERALL DESCRIPTION

- Date of manufacture : 07/2009
- Standards : CE
- Base frame : -
- Capacity : 5 kg
- Colour : White
- Width :
- Net weight : 68 kg
- Gross weight : 70 kg
- Drum rotation speed :
- Spinning :

ELECTRICAL DATA

- Supply voltage : - 230 V
- Frequency : - 50 Hz
- Maximum current density : - 16 A
- Total electrical power : - 2250 W

WATER SUPPLY

- 3 way solenoid valve.

	V1	V2	V3	V4	V5
Flow rate (l/mn)					
Ohmic value (Ω)					

DRAIN PUMP

- Electrical power :
- Flow rate :
- Ohmic value at 20 °C :

HEATING

- Immersion heater
 - Power : 2000 W
 - Ohmic value at 20 °C :

PROGRAMMING

- Power PCB type :
- Programming type : -
- Test programme :

DRIVE

- Induction motor :
 - HS winding value :
 - Main :
 - Auxiliary :
 - LS winding value :
 - Brown and yellow :
 - Green and Yellow :
 - Brown and Green :
 - Starting capacitor :
- Synchronous motor :
 - Stator winding value :
 - Rotor winding value :
 - Tachio generator :

TEMPERATURE CONTROL

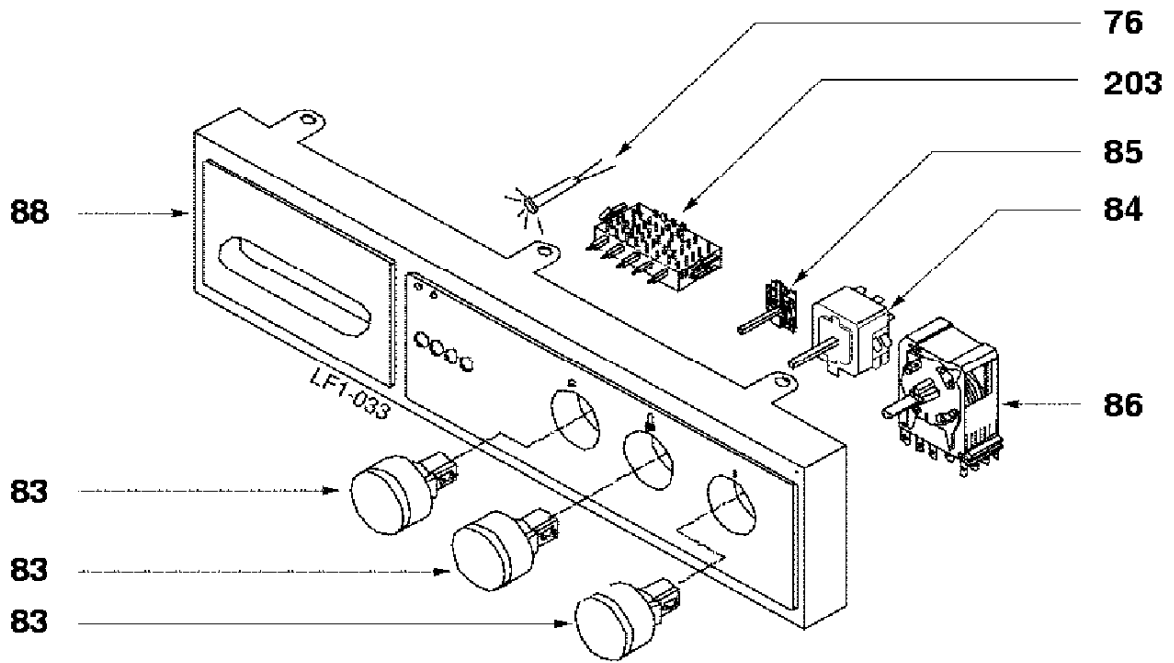
- By adjustable thermostat : YES
- A ___ k Ω potentiometer enables the selection of cold temperature at 90 °C using the module that reads the information through the sensor.
- A ___ position switch (cold, 30 °C to 90 °C) controlling a ___ k Ω \pm ___ % thermistor at ___ °C.
-

SECURITIES

- Heating
 - A resettable 92 °C thermostat : NO
 - A thermal device locks the door during the washing cycle. Its action extends about 2 minutes after the machine has stopped.
 - A thermal device locks the door during the drainage / spinning operations.

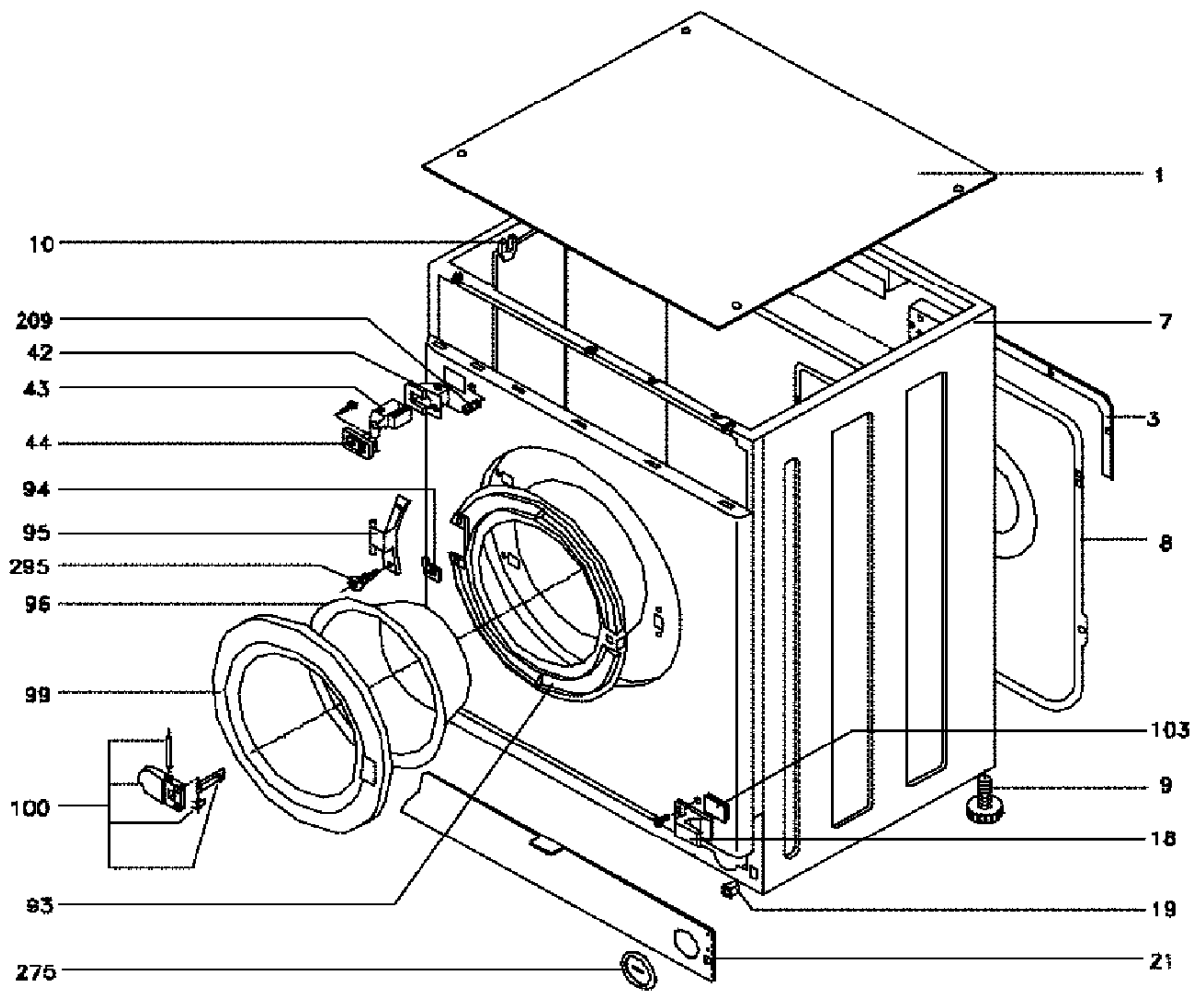
PERFORMANCE

Temperatures	Water (l)	Time (mn)	Power (kW)
At 60°C			



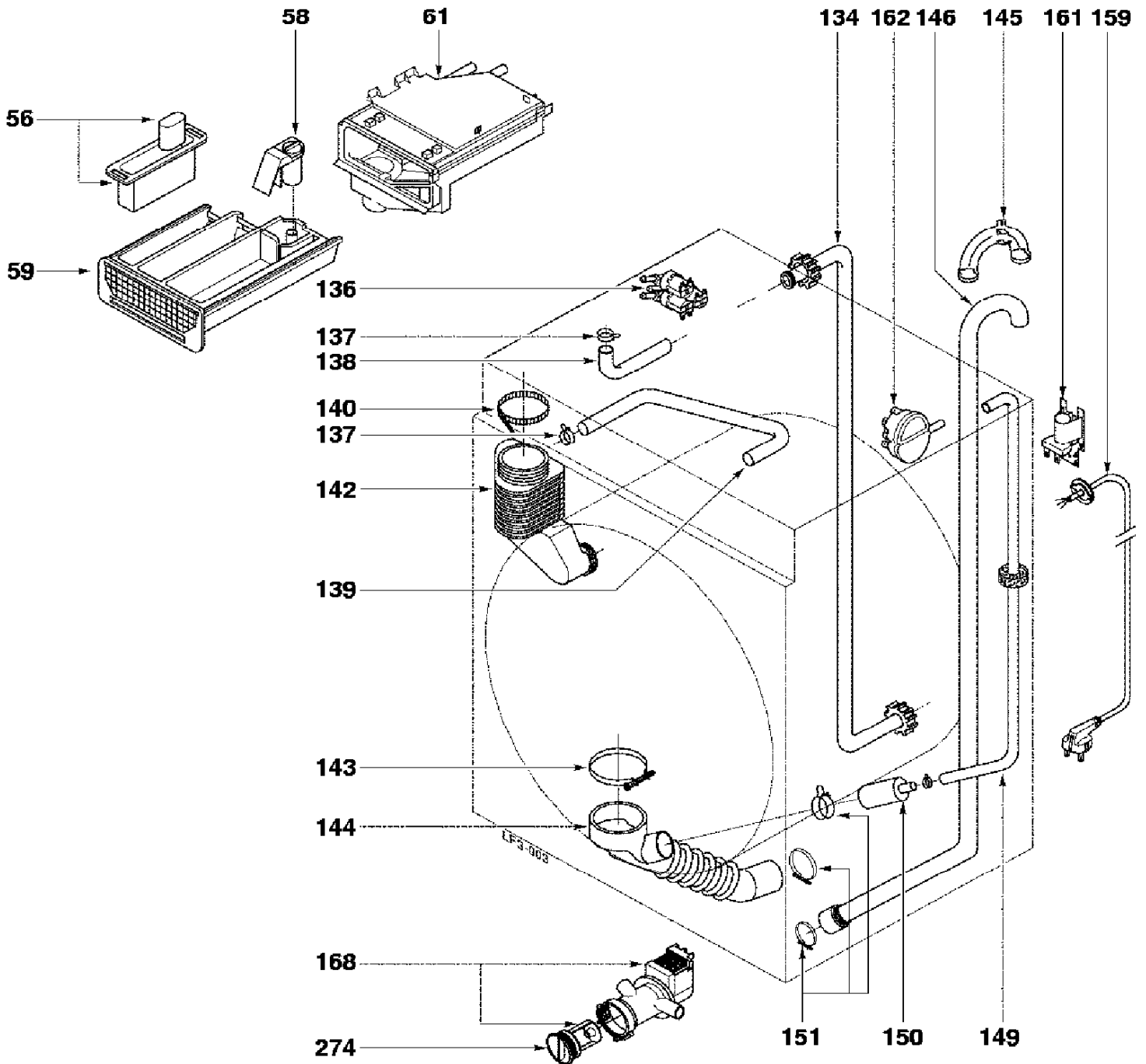
LF1-033

QWM1
QWM1
905473589



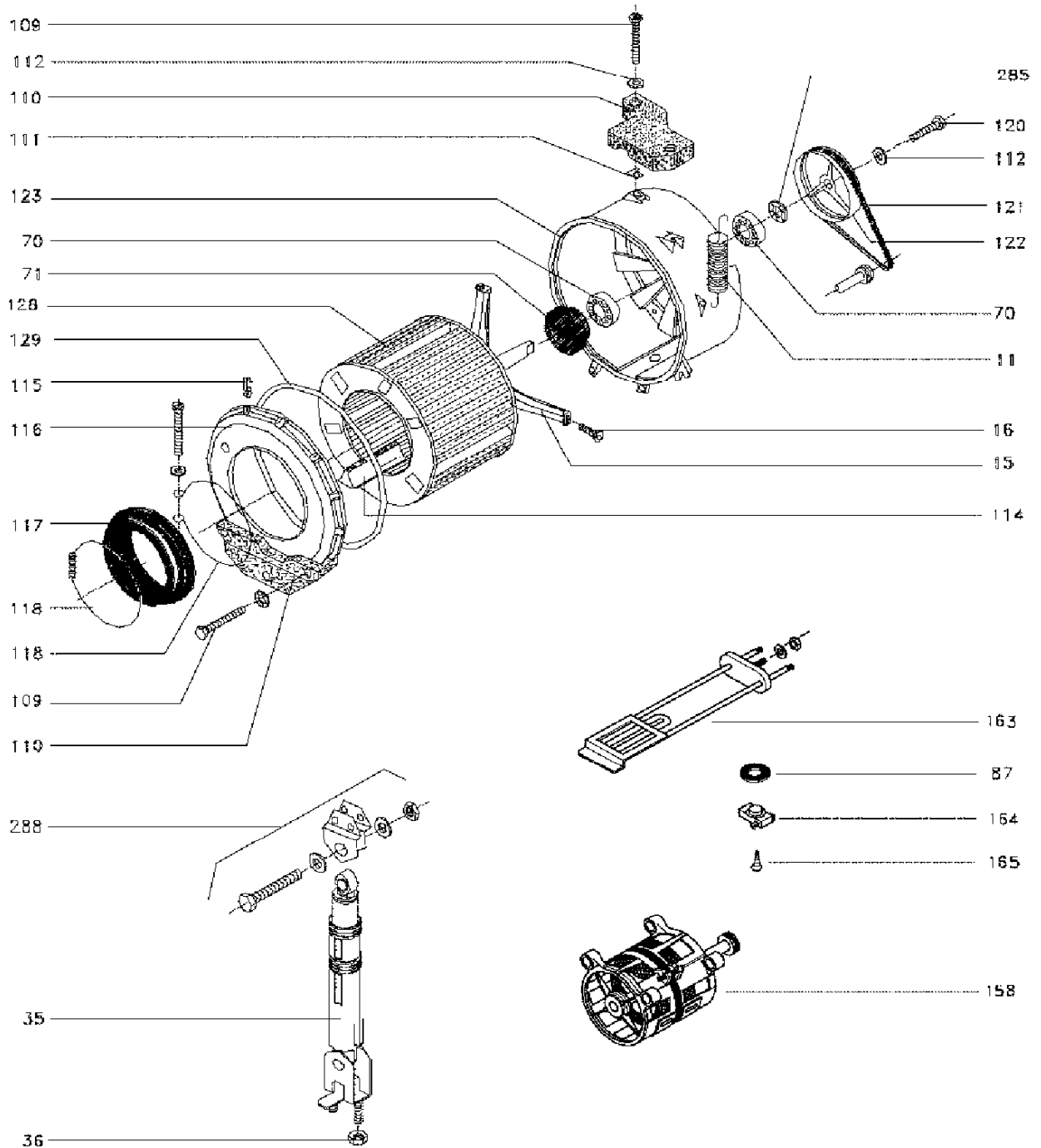
LF2-023

WAF0877E
WAF0877E1
905690904



LF3-003

QWM1
QWM1
905473589



LF4-016

QWM1
QWM1
905473589



REP.	REF. SAV	DESIGNATION	REP.	REF. SAV	DESIGNATION
0	52X2182	KIT ENCASTREMENT BUILT-IN FITTING KIT	83	72X5799	PROGRAMMATEUR TIMER
0	52X4810	ADAPTATEUR MOTOR ADAPTER MOTOR	84	52X2147	POTENT.ESSORAGE POTENT. CENTRIFUGATI
0	85X2790	NOTICE D'UTILISATION INSTRUCTIONS FOR USE	85	52X2148	POTENT.TEMPERATURE POTENT. TEMPERATURE
76	52X2143	VOYANT INDICATOR	86	55X9976	PROGRAMMATEUR ELBI<->COPRECI TIMER ELBI<->COPRECI
83	52X2145	BOUTON D'ESSORAGE SPIN KNOB	88	72X5801	BANDEAU DE COMMANDE CONTROL PANEL
83	52X2146	BOUTON DE COMMANDE T°C CONTROL KNOB T°C	203	52X2198	CLAVIER + TOUCHES KEYPAD + BUTTON

QWM1
QWM1
905473589



REP.	REF. SAV	DESIGNATION	REP.	REF. SAV	DESIGNATION
1	52X5032	TOLE SUPERIEURE UPPER PANEL	44	52X2169	FERMETURE DE PORTE DOOR CLOSER
3	55X9888	ENJOLIVEUR ARRIERE REAR TRIM	93	52X2170	CONTRE PORTE DOOR BACK
7	52X2151	HABILLAGE BLANC WHITE CASING	94	52X1711	RENFORT CHARNIERE R'FORCEMENT, HINGE
8	55X9889	TOLE ARRIERE REAR PLATE	95	52X2171	CHARNIERE DE HUBLOT WINDOW HINGE
9	52X0077	PIED REGLABLE ADJUSTABLE LEG	96	55X9900	HUBLOT WINDOW
10	55X9895	EMBOUT END	99	52X2172	CADRE DE HUBLOT WINDOW SURROUND
18	52X2153	CHARNIERE DE PORTE DOOR HINGE	100	52X2173	POIGNEE DE HUBLOT DOOR HANDLE
19	52X5064	TAQUET DOG	103	52X2177	CACHE CHARNIERE HINGE COVER
21	96X1020	PLINTHE PLINTH	209	52X2179	AIMANT MAGNET
42	52X2178	FERMETURE DE PORTE DOOR CLOSER	275	52X0861	BOUCHON PLUG
43	52X2168	FERMETURE DOOR LOCK	295	52X3365	CHARNIERE DE HUBLOT WINDOW HINGE

QWM1
QWM1
905473589



REP.	REF. SAV	DESIGNATION	REP.	REF. SAV	DESIGNATION
54	55X9915	SYPHON SYPHON	139	52X0103	TUYAU ANTI CONDENS. ANTI CONDENSATION PI
56	52X0010	KIT LESSIVE LIQUIDE KIT, LIQUID DETERGE	140	96X1722	BRIDE (=x10) CLAMP (=x10)
58	55X9916	SYPHON SYPHON	142	55X9906	DURIT BOITE CUVE FLEX HOSE, TUB BOX
59	55X9919	TIROIR A LESSIVE WASHING POWDER DRAWE	143	55X9907	COLLIER FIXATION SKIRT, ATTACHING
61	55X9920	BOITE A PRODUITS DETERGENT BOX	144	52X1120	DURIT CUVE/POMPE PUMP TANK HOSE
62	55X9921	TIGE DE COMMANDE CONTROL ROD	145	32X2912	COUDE BEND
63	52X3046	CAME DE DISTRIBUTION DISTRIBUTION CAM	146	41X0115	TUYAU DE VIDANGE DRAIN PIPE
64	55X9950	GUIDE GUIDE	149	55X9910	TUYAU PRESSOSTAT PRESSURE SWITCH PIP
65	55X9951	RESSORT DE FIXATION FIXING SPRING	150	55X9911	MANCHETTE SLEEVE
66	55X9952	LEVIER DE CAME LEVER, CAM	151	55X9981	ENS.BLOCAGE TUYAU PIPE LOCKING ASSEMBL
102	52X0984	SECURITE DE PORTE DOOR SAFETY DEVICE	157	52X0877	CARTE DE COMMANDE 900-1100-1300T CONTROL CARD 900-1100-1300T
134	55X9904	TUYAU D'ALIMENTATION SUPPLY PIPE	159	52X1971	CORDON SECTEUR ELECTRICALCORD
136	55X9924	ELECTROVANNE SOLENOID VALVE	161	55X9994	FILTRE ANTIPARASITES NOISE FILTER
136	52X2186	ELECTROVANNE 1VOIE T°C ELEC.VALVE,1-WAY T°C	162	52X1302	PRESSOSTAT 2NIVEAUX 2 LEVEL MANOSTAT
137	52X0882	COLLIER FIXATION SKIRT, ATTACHING	168	52X3575	CARTE DE PUISSANCE POWER CARD
138	55X9905	TUYAU DE LAVAGE WASHING PIPE	274	55X9914	BOUCHON POMPE VISSE SCREW PUMP CAP
			274	52X3871	FILTRE FILTER

QWM1
QWM1
905473589



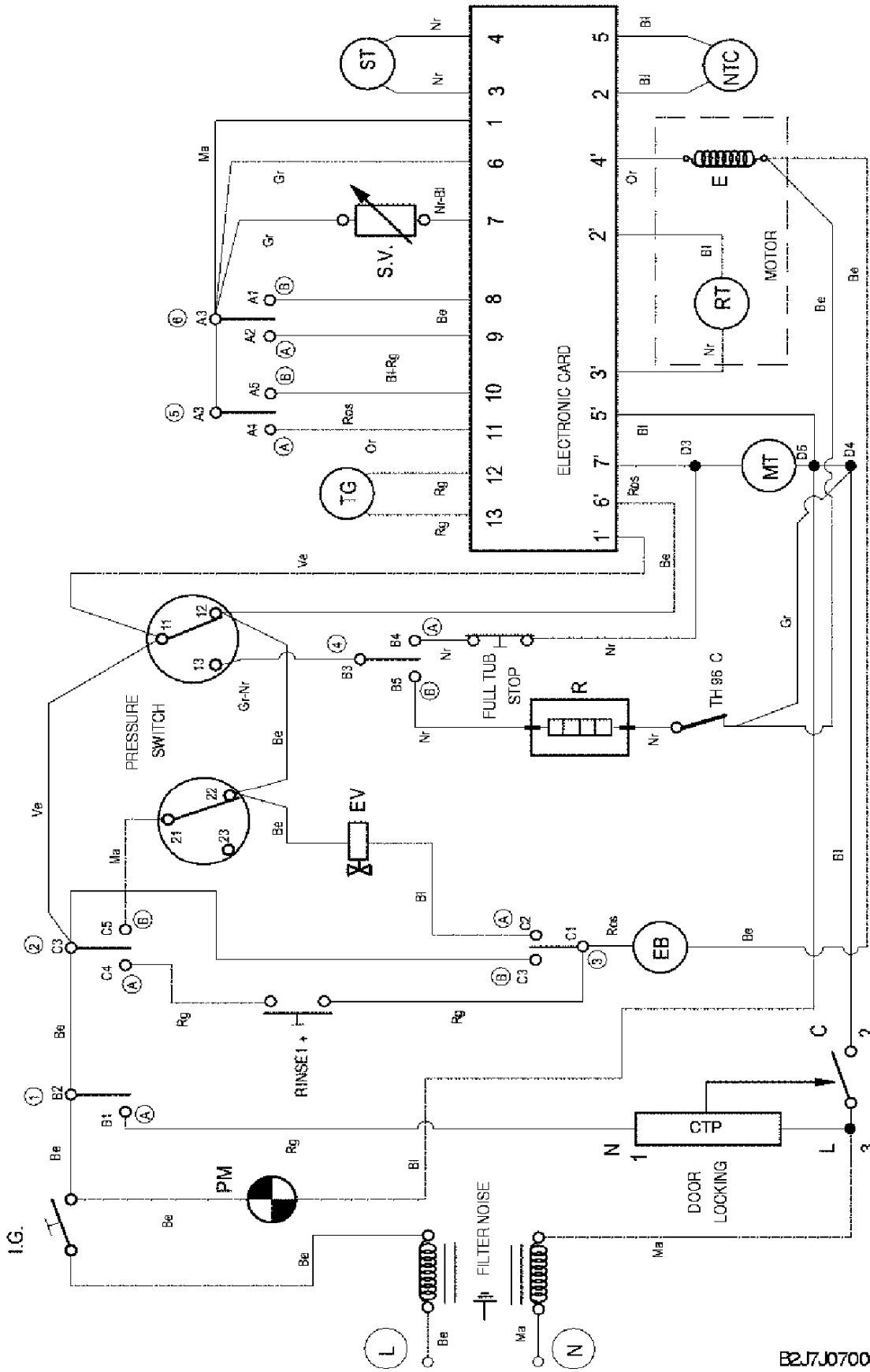
REP.	REF. SAV	DESIGNATION	REP.	REF. SAV	DESIGNATION
0	52X2181	GABARIT DE MONTAGE ASSEMBLY JIG	115	55X9953	CLIPS = X1 CLIP = X1
11	55X9941	RESSORT SUSPENSION TANK SUSPENS.SPRING	116	52X1311	COUVERCLE DE CUVE COVER, TANK
15	52X2601	CROISILLON AVEC AXE SPIDER WITH PIN	117	52X1659	JOINT HUBLOT SEAL, WINDOW
16	55X9968	VIS FIX.CROISILLON TORX CROOS BAR FIX. SCREW TORX	118	55X9946	COLLIER FIXATION SKIRT, ATTACHING
35	52X0093	AMORTISSEUR 120 SHOCK ABSORBER 120	118	52X3048	COLLIER FIXATION JOINT HUBLOT SKIRT, SEAL ATTACHING
36	52X1296	ECROU NUT	120	55X9954	ECROU NUT
70	52X0883	ROULEMENT BEARING	121	52X0032	COURROIE 1184J5 BELT 1184J5
71	55X9980	BAGUE D'ETANCHEITE 800/1000 SEALING BUSH 800/1000	122	52X0033	POULIE TAMBOUR DRUM PULLEY
87	55X9930	JOINT DE THERMOSTAT THERMOSTAT SEAL	123	52X1687	CUVE PLASTIQUE 47L TUB, PLASTIC 47L
109	55X9966	VIS FIX.LEST (Qty 4) BALLAST FIX. SCREW (Qty 4)	128	52X1299	TAMBOUR DRUM
109	52X0210	VIS FIX.LEST BALLAST FIX. SCREW	129	55X9987	JOINT FLANC DE CUVE SEAL TUB SIDE
110	55X9936	LEST FRONTAL FRONT-END BALLAST	158	52X5716	MOTEUR - MOTOR -
110	52X1297	LEST SUPERIEUR 45L 16Kg C'WT., UPPER 45L 16Kg	163	52X2180	THERMOPLONGEUR IMMERSION HEATER
111	55X9939	PLAQUE DE FIXATION ATTACHMENT PLATE	164	55X9996	SONDE DE TEMPERATURE 96%-24 °C PROBE, TEMPERATURE 96%-24 °C
112	57X1833	RONDELLE WASHER	164	52X1684	SONDE DE TEMPERATURE 96 °C/50 °C PROBE, TEMPERATURE 96 °C/50 °C
114	52X1298	OMEGA 22 CM OMEGA BRACKET 22 CM	165	57X1832	VIS SCREW
			285	52X0864	RONDELLE 45L WASHER 45L
			288	52X1300	ETRIER BRACKET

WASHING MACHINE

WFF1012K
905472367



TECHNICAL
INSTRUCTIONS



Be	: Blue	Or	: Orange
Be/cl	: Pale Blue	Rg	: Red
Be/f	: Dark Blue	Ve	: Green
Bl	: White	Ve/d	: Pale Green
Gr	: Grey	Ve/f	: Dark Green
Ja	: Yellow	Vl	: Violet
Ma	: Brown	Ja	: yellow
Nr	: Black		

- I.G. : ON/OFF SELECTOR
- PM : INDICATOR LIGHT ON
- EB : DRAIN PUMP
- R : HEATING ELEMENT
- ST : TEMPERATURE POTENTIOMETER
- SV : SPEED POTENTIOMETER
- EV : WATERVALVE
- RT : ROTOR
- E : STATOR
- MT : TIMER MOTOR
- NTC : SONDE
- TG : TACHOMETER

B2J7J0700