



FGC700SS

**Caple Stainless Steel & Glass
700mm Extractor**

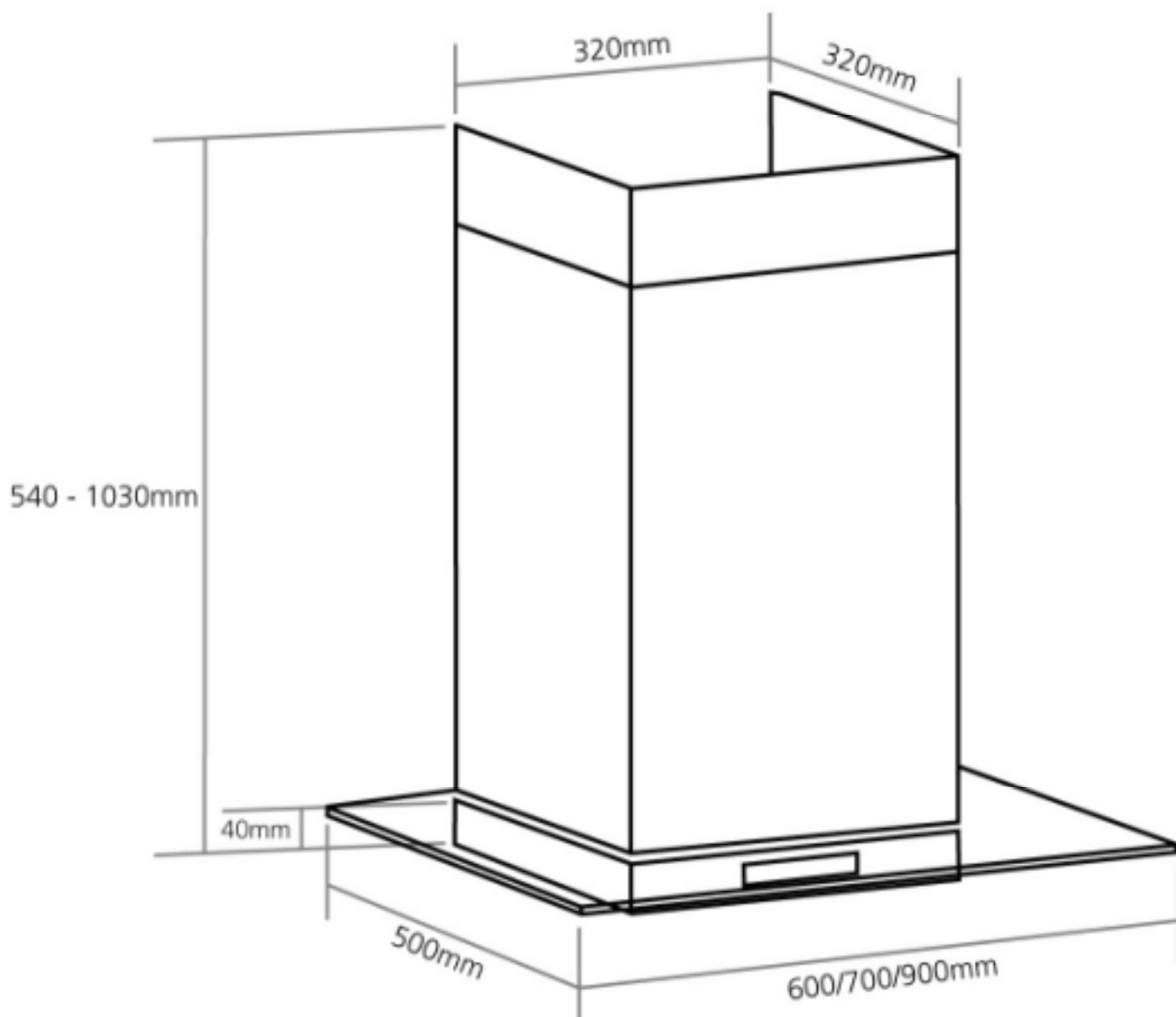


TECHNICAL INFORMATION



FGC700SS

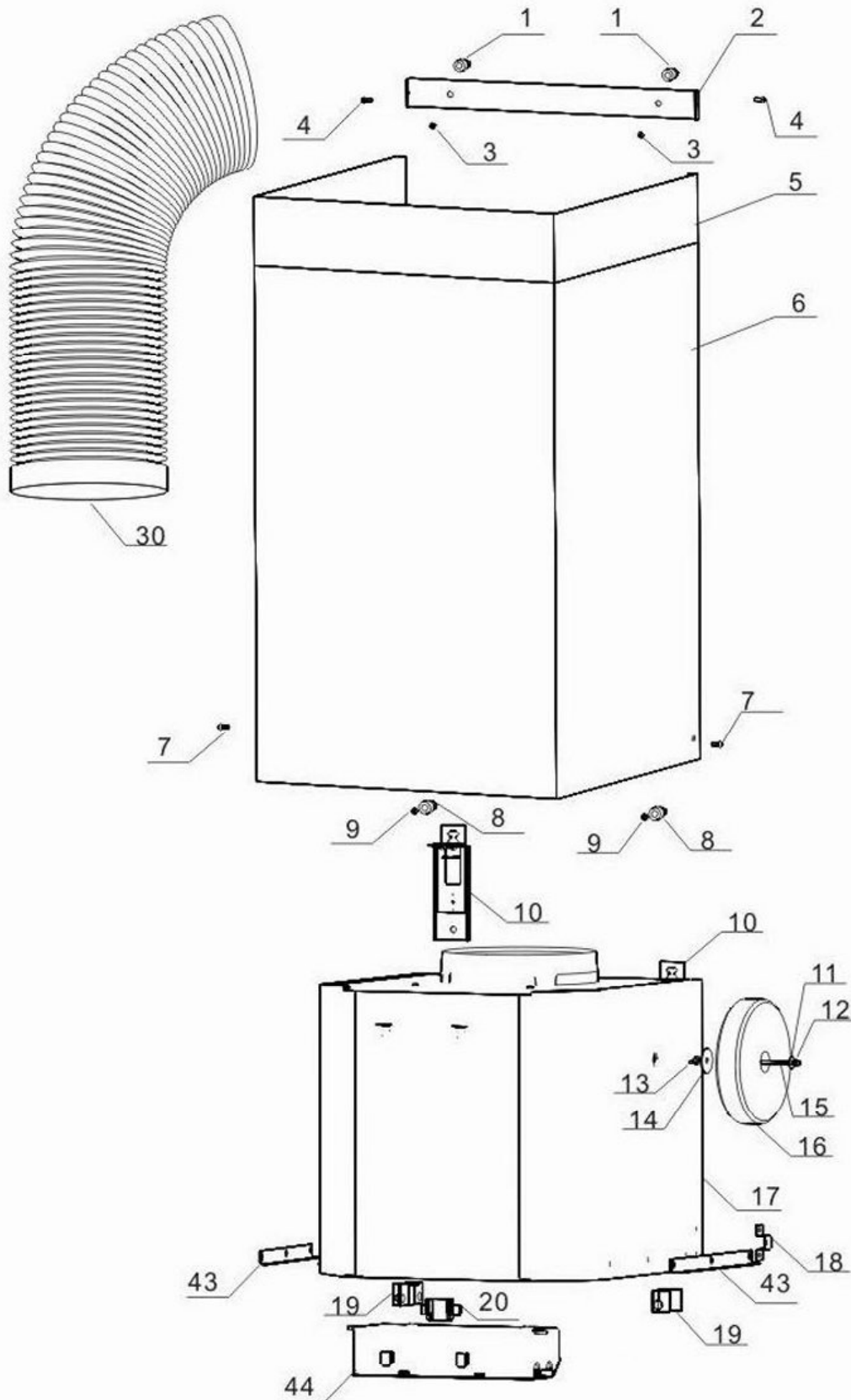
**Caple Stainless Steel & Glass
700mm Extractor**





FGC700SS

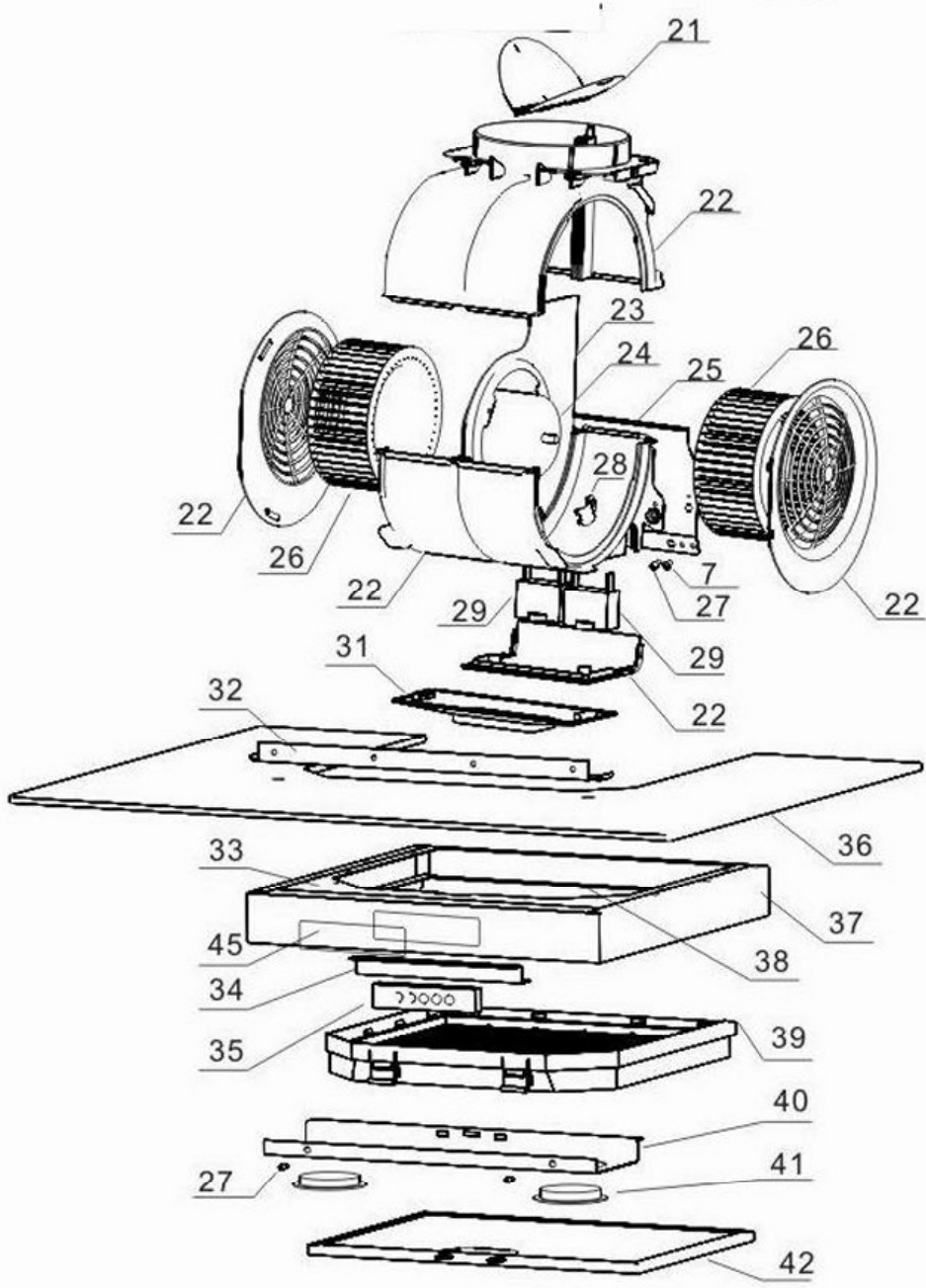
Cable S.S. & Glass Extractor





FGC700SS

Caple S.S. & Glass Extractor





FGC700SS - Caple S.S. & Glass Extractor

Item	Part Code	Description	Qty
1	FJL06-030-15A	6x30 plastic wall plug	2
2	BZCB600A-00-1	Bracket for upper funnel	2
3	FLD04-012-06A	ST4x12 self tapping screw	2
4	FL DO3-008-05 B	M3x8 stainless steel countersunk screw	2
5	BYCZ600A-00-1	Upper funnel	1
6	BYCZ601A-01-1	Lower funnel	1
7	FL D04-008-04AC	M4x8 round head screw	2
8	FJL08-035-15A	8x35 plastic wall plug	2
9	FLD04-035-06A	ST4x35 self tapping screw	2
10	BGG600A-00-1	Leveling device assembly	2
11	FPD04-008-07A	4mm washer	1
12	FTD04-08A	4mm spring lock washer	1
13	FLM04-01E	M4 butterfly nut	1
14	FPD06-024-07A	6mm washer	1
15	FLD04-040-18A	M4x40 Round head screw	1
16	DBYQ600A-00-1	Torroidal transformer	1
17	BFJX600A-00-1	Air chamber	1
18	BZJ601A-00-1	Lower funnel connecting bracket	2
19	DXJ602A-00-1	Clip 2	2
20	DXJ601A-00-1	Clip 1	1
21	DTH600A-00-1	Butterfly valve	1
22	DWK600A-00-1	Blower shell	1
23	BGDB601 A-00-1	Motor mount	1
24	DDJ600A-00-1	Motor 2 phase, 3 speed	1
25	BGDB600A-00-1	Blower mount	1
26	DFL601 A-00-1	Propellor left & right	2
27	DLD601 A-00-1	Mounting rivet	2
28	DGDJ600A-00-1	Chord clip	1
29	DDR600A-00-1	Capacitor 6 M F	1
30	DDFG 500A-00-1	PVC duct	1
31	DYB501 A-00-1	Oil collector	1
32	BGDT601 A-00-1	Front mounting bar of glass canopy	1
33	BUB600A-00-1	Canopy top panel	1
34	BZJ603A-00-1	Mount for switch	1
35	DKZH600A-00-1	Case for switch	1
36	DBLZ612 A-00-1	Glass Cover	1
37	BBK602A-00-1	Frame(stainless steel)	1
38	BCT600A-00-1	Back chassis panel	1
39	DHXT600A-00-1	Charcoal filter	1
40	BDB600A-00-1	Lamp board	1
41	DSYD600A-00-1	Halogen Lamp	2
42	DLW600A-00-1	Aluminium filter	1
43	BGDT600A-00-1	Left & right mounting bar of glass canopy	2



FGC700SS - Caple S.S. & Glass Extractor

Item	Part Code	Description	Qty
44	DDYH600A-00-1	Electronic controller	1
45	DMB600A-00-1	controller pcb plastic panel	1
46	DDR601 A-00-1	Capacitor(3 u F)	1



FGC600SS, FGC700SS, FGC900SS Chimney Extractors

Instructions to fit CAP24CF Carbon Filter.

- 1. ISOLATE THE ELECTRICAL SUPPLY FROM THE EXTRACTOR.**
2. Remove the metal grease filter.
3. Use a cross point screwdriver to remove two screws that fix the bottom light panel in position.
4. Pull the light panel to the back and remove. It is located by two lugs.
5. With the light panel removed there is access into the chimney to fit the carbon filter.
6. Locate the back edge of the filter in position and push into position. The filter has two plastic brackets that “snap” into two slots in the body.
7. Refit light panel.
8. Refit metal grease filter.

