



C3400

Caple Sense XL double oven



TECHNICAL INFORMATION



New product information sheet

Product name: XL

Description: Double built in oven

Product code: C3400

Top oven features

A energy

8 Functions:

- *light*
- *conventional heat*
- *fan heat*
- *full grill*
- *turbo defrost*
- *turbo grill*
- *turbo conventional heat*
- *turbo top heat (line description tba)*

53 Litre capacity

Bottom oven features

A energy

8 Functions:

- *light*
- *conventional heat*
- *fan heat*
- *full grill*
- *turbo defrost*
- *turbo grill*
- *turbo conventional heat*
- *turbo top heat (line description tba)*

General features

Stainless steel and glass

Touch control Programmable electronic timer

Black-spot Sense feature bar handles





New product information sheet

Product name: XL

Description: Double built in oven

Product code: C3400

Push-pull dials

Grey easy to clean enamel interiors

Closed door grilling

Tangential cooling fan

Smooth oven sides with chrome shelf racks

Full width inner glass doors

Double glazed doors with heat reflective glass

Rear and side interior light in each cavity

Self-cleaning catalytic liners available

Accessories

1 Safety-stop shelf in top oven

1 telescopic shelf in top oven.

1 Safety-stop shelf in bottom oven

1 telescopic shelf in bottom oven.

1 Grill pan with handle in top oven

1 Grill pan with handle in bottom oven



Electrical connection

Rated load 5.95kW

Fuse rating 25A

Optional extras

Side and rear catalytic liners for each oven CAPCAT12 (1 set per oven)



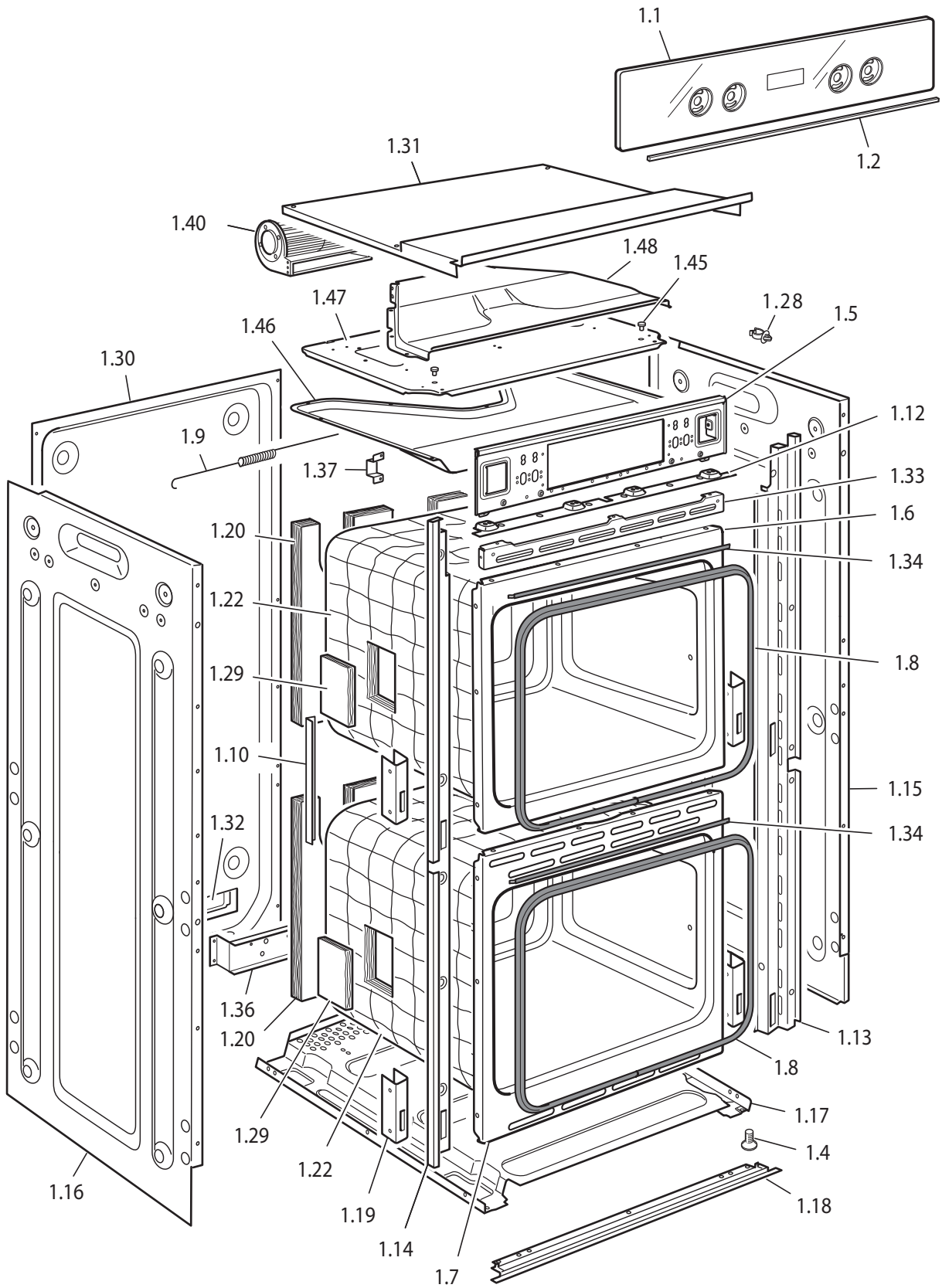
Product code:

F6T0CP002H

Product: **Double oven**

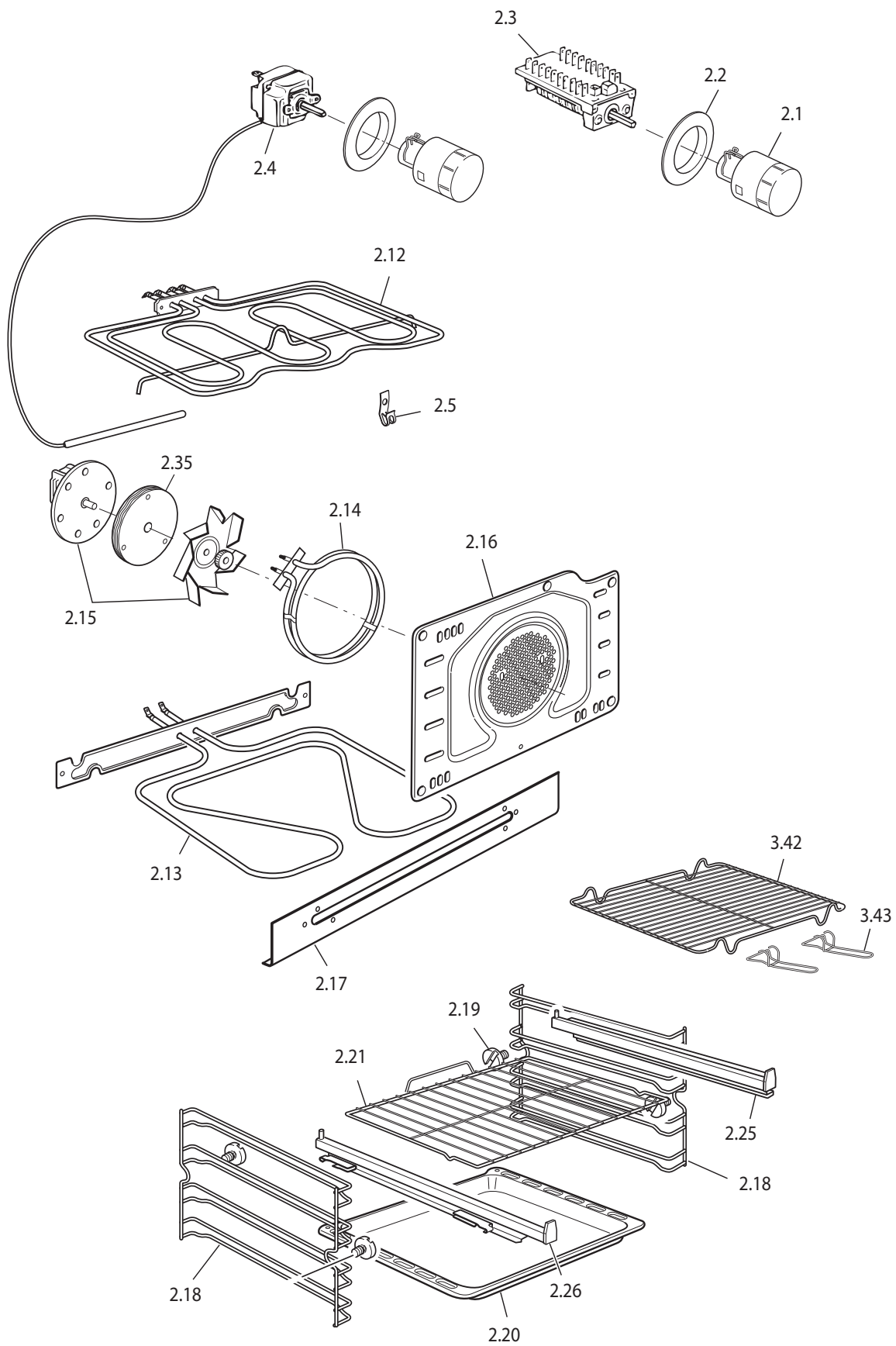
Model: **C 3400**

Product code	Serial No.	Product remark	Issue No.	Issue Date
F6T0CP001H			18.F5366	March 2010
F6T0CP002H		Differences from previous product code: - New Side Light - New Oven Cubes		October 2010

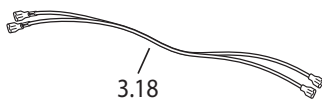
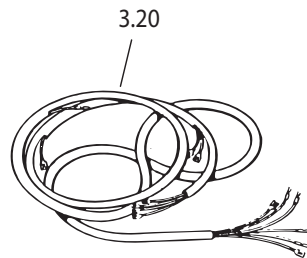
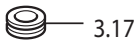
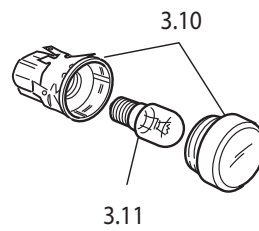
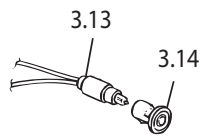
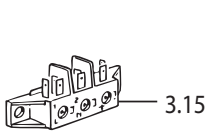
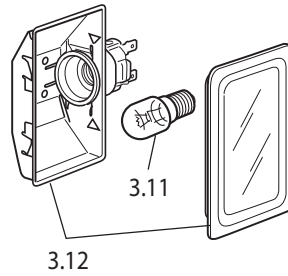
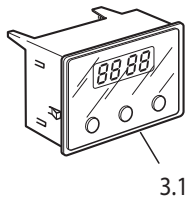
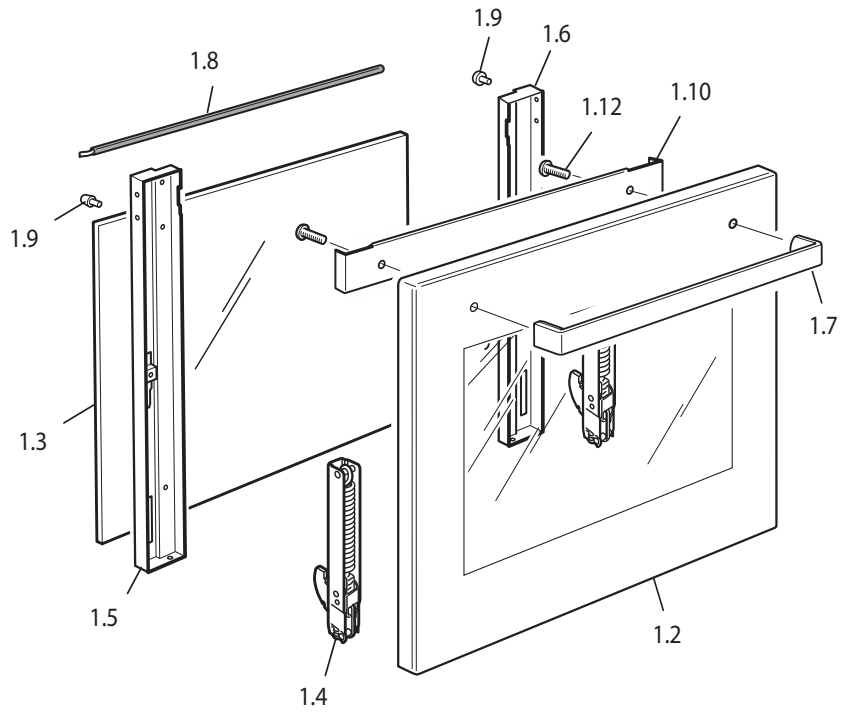


Tav. 1

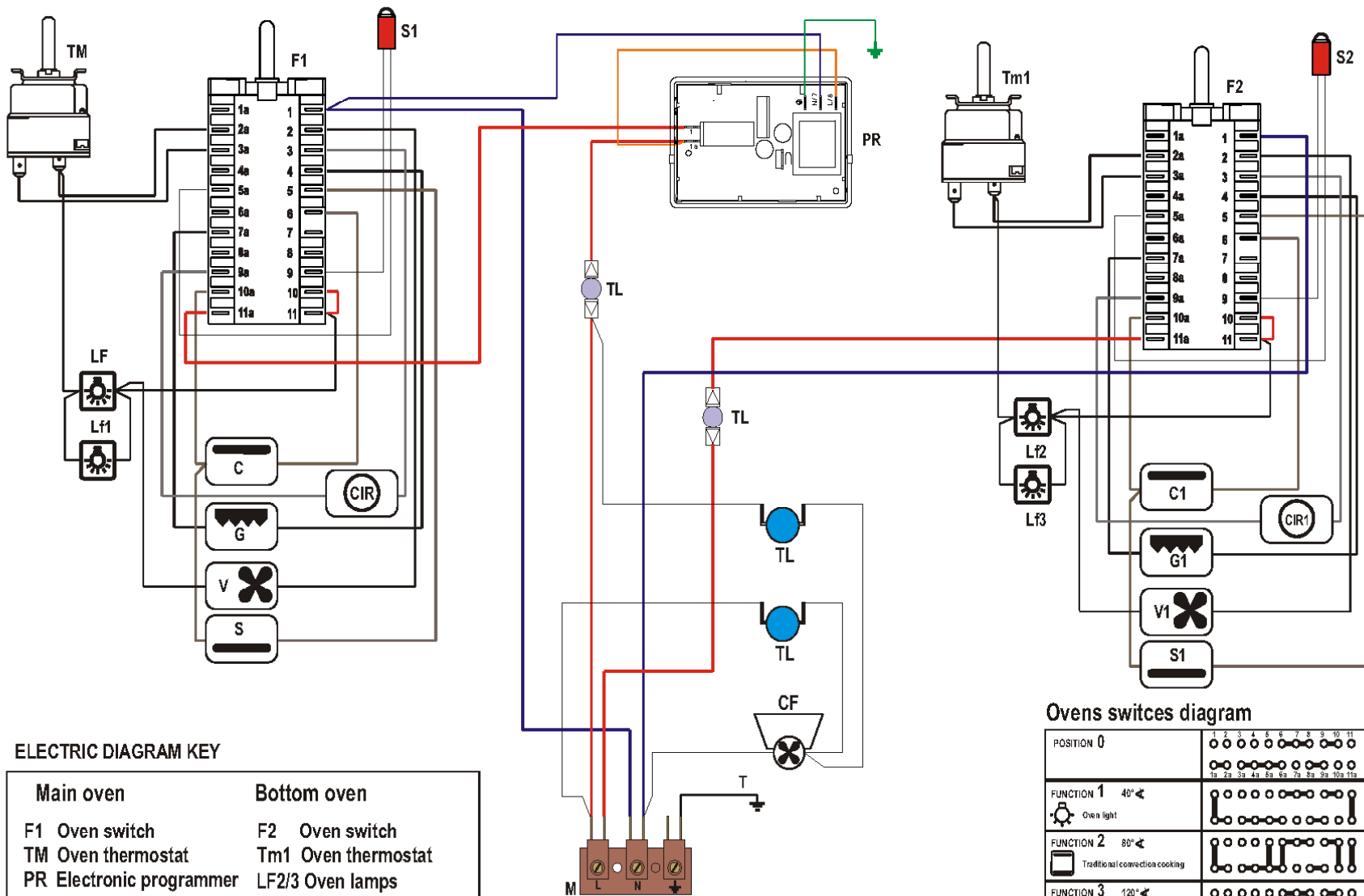
Ref.	Product code			
	F6T0CP001H		F6T0CP002H	
	Feature	Part code	Feature	Part code
1.1	Glass facia panel		032F62857	
1.2	Seal		053143	
1.4	Shim		1031164	
1.5	Control panel		35MF6011H	
1.6	Top oven body		450F61EM48	450F61EM60
1.7	Bottom oven body		450F61EM47	450F61EM59
1.8	Seal		053087	
1.9	Insulation spring		035101	
1.10	Oven body bar		094621	
1.12	Control panel deflector		51BF614S.1	
1.13	Right front trim		51BF6T01H	
1.14	Left front trim		51BF6T02H	
1.15	Right side panel		411F6T01	
1.16	Left side panel		411F6T02	
1.17	Bottom panel		411F602.1	
1.18	Lower trim		08328400H	
1.19	Door hinge (female)		094390	
1.20	Oven rear insulation		030189	
1.22	Oven insulation		030188	
1.28	Wire clamp		103672	
1.29	Side lamp insulation		030190.1	030229.1
1.30	Rear panel		411F6T03	
1.31	Upper shelter		411F604	
1.32	Terminal block shield		51BF609	
1.33	Top oven body panel		083319H	
1.34	Top-bottom seal		053074	
1.36	Terminal block support		094620	
1.37	Cut-off thermostat support		094392	
1.40	Right tangential fan		079017	
1.45	Buffer		040056	
1.46	Bottom air conveyor		411F607	
1.47	Conveyor support		421F602Z	
1.48	Air conveyor		411F605	



Ref.	Part description	Product code		Product code	
		F6T0CP001H		F6T0CP002H	
		Feature	Part code	Feature	Part code
2.1	Oven knob		218900A477		
2.2	Control knob ring		1031299		
2.3	Oven switch		050028.1		
2.4	Oven thermostat		066078		
2.5	Clips		213023		
			213025		
2.12	Top + grill element	230 V	062089004		
2.13	Bottom element	230 V	062090004		
2.14	Fan element	230 V	062097004		
2.15	Fan motor	220/240 V	079008001F		
2.16	Fan diffuser		47AF602G		
2.17	Bottom element support		51BF603.1		
2.18	Shelf support		217646		
2.19	Screw		001142		
2.20	Oven tray		48BF601G		
2.21	Wire shelf		217558.2		
2.25	Right telescopic runner		1031037		
2.26	Left telescopic runner		1031038		
2.35	Fan motor insulation		030136.1		
3.42	Grill-pan grid		217546		
3.43	Grill-pan grid handle		037144		



Ref.	Part description	Product code		Product code	
		F6T0CP001H		F6T0CP002H	
		Feature	Part code	Feature	Part code
1.2	Top door glass		032F62723A		
	Bottom door glass		032FT002		
1.3	Top inner glass		0312571TH		
	Bottom inner glass		0312577TH		
1.4	Hinge (male)		063107		
1.5	Left door trim		51AF621SH		
1.6	Right door trim		51AF621DH		
1.7	Door handle		037299061		
1.8	Seal		053125		
1.9	Rubber		040051		
1.10	Top handle bar		51BF623H		
1.10	Bottom handle bar		51BF625H		
1.12	Screw		001265		
3.1	Electronic timer		074105		
3.10	Lamp holder		072010		
3.11	Lamp		073013001		
3.12	Side lamp holder		072015		072020
3.13	Control lamp	L=230	073039.2		
3.14	Control lamp cover - Red		073041.2		
3.15	Terminal block - 40A - 3P		051038		
3.16	Wire fastener		052008		
3.17	Grommet		052007		
3.18	Side lamp wiring		1131595		
3.19	Cut-off thermostat	130°	066068		
		175°	066080		
		55°	066123		
3.20	Wiring		1131897		
-	Instruction booklet		1103459		



ELECTRIC DIAGRAM KEY

Main oven	Bottom oven
F1 Oven switch	F2 Oven switch
TM Oven thermostat	Tm1 Oven thermostat
PR Electronic programmer	LF2/3 Oven lamps
LF/1 Oven lamps	S2 Thermostat pilot lamp
S1 Thermostat pilot lamp	C1 Top element
TL Thermal overload	G1 Grill element
C Top element	S1 Bottom element
G Grill element	V1 Fan
S Bottom element	CIR1 Circular element
V Fan	
CIR Circular element	
CF Cooling fan	
M Terminal block	
T Earth connection	

Ovens switches diagram

POSITION 0	1 2 3 4 5 6 7 8 9 10 11
POSITION 0	○ ○ ○ ○ ○ ○ ○ ○ ○ ○ ○ ○
FUNCTION 1 40°	○ ○ ○ ○ ○ ○ ○ ○ ○ ○ ○ ○
FUNCTION 2 80°	○ ○ ○ ○ ○ ○ ○ ○ ○ ○ ○ ○
FUNCTION 3 120°	○ ○ ○ ○ ○ ○ ○ ○ ○ ○ ○ ○
FUNCTION 4 160°	○ ○ ○ ○ ○ ○ ○ ○ ○ ○ ○ ○
FUNCTION 5 200°	○ ○ ○ ○ ○ ○ ○ ○ ○ ○ ○ ○
FUNCTION 6 240°	○ ○ ○ ○ ○ ○ ○ ○ ○ ○ ○ ○
FUNCTION 7 280°	○ ○ ○ ○ ○ ○ ○ ○ ○ ○ ○ ○
FUNCTION 8 320°	○ ○ ○ ○ ○ ○ ○ ○ ○ ○ ○ ○



C3400

Capele Sense XL double oven