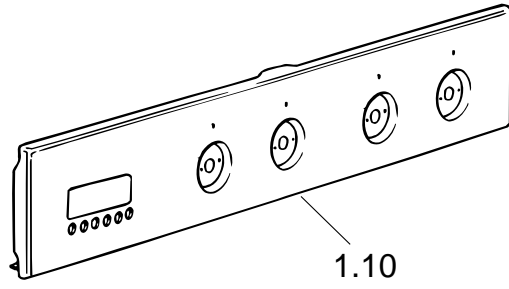




# **C305M/SS**

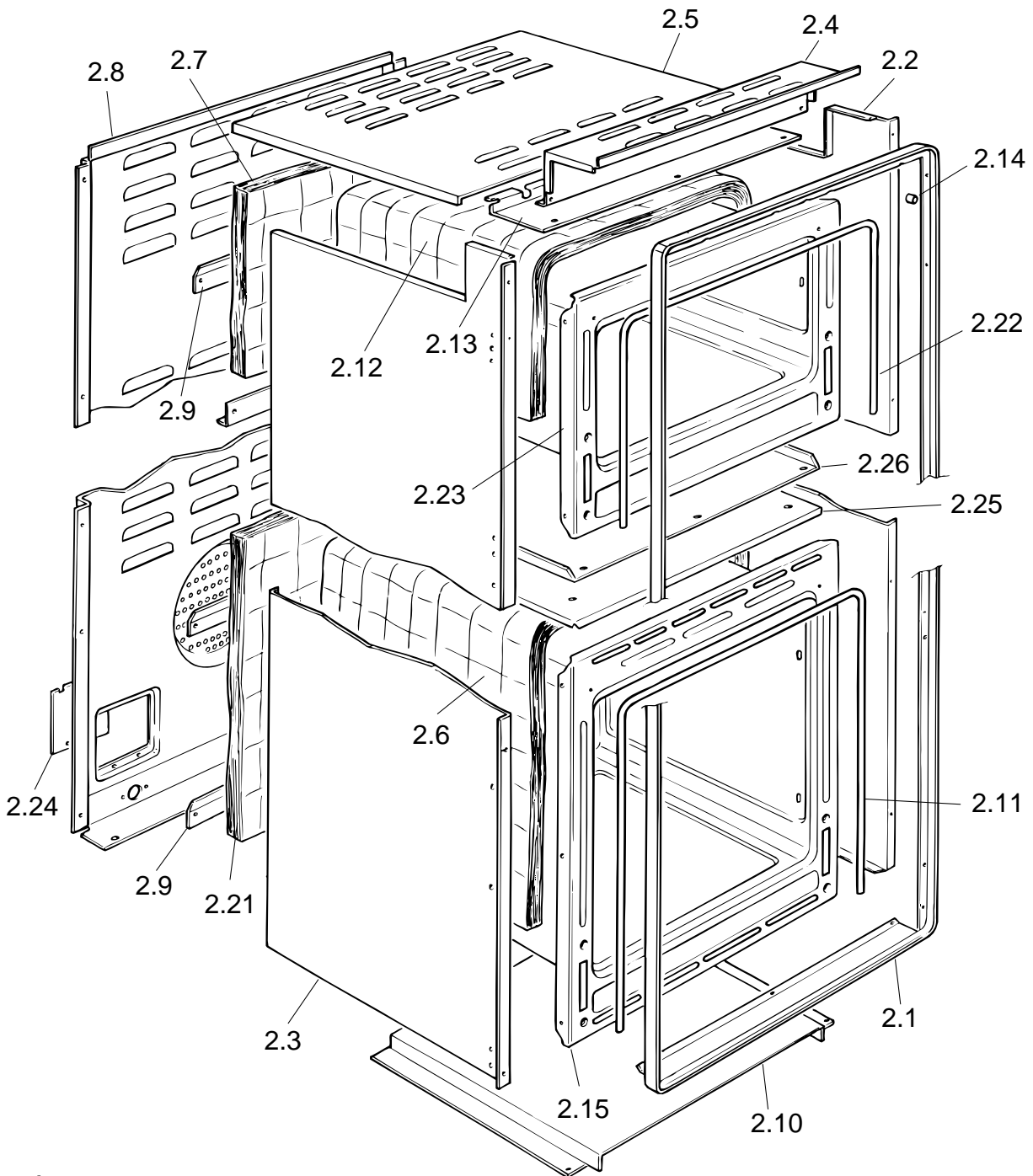
**Caple Double D.L Fan Oven**

**TECHNICAL INFORMATION**



1.10

3/1.F



3/2.AA

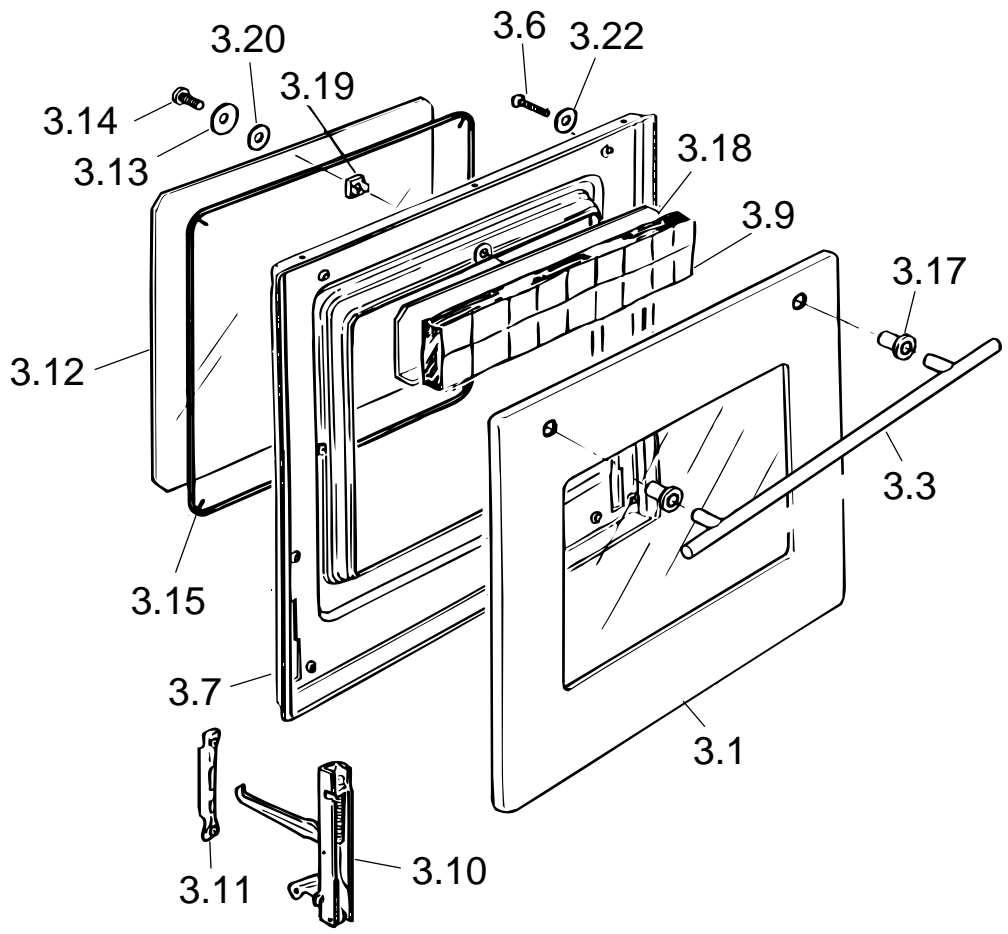
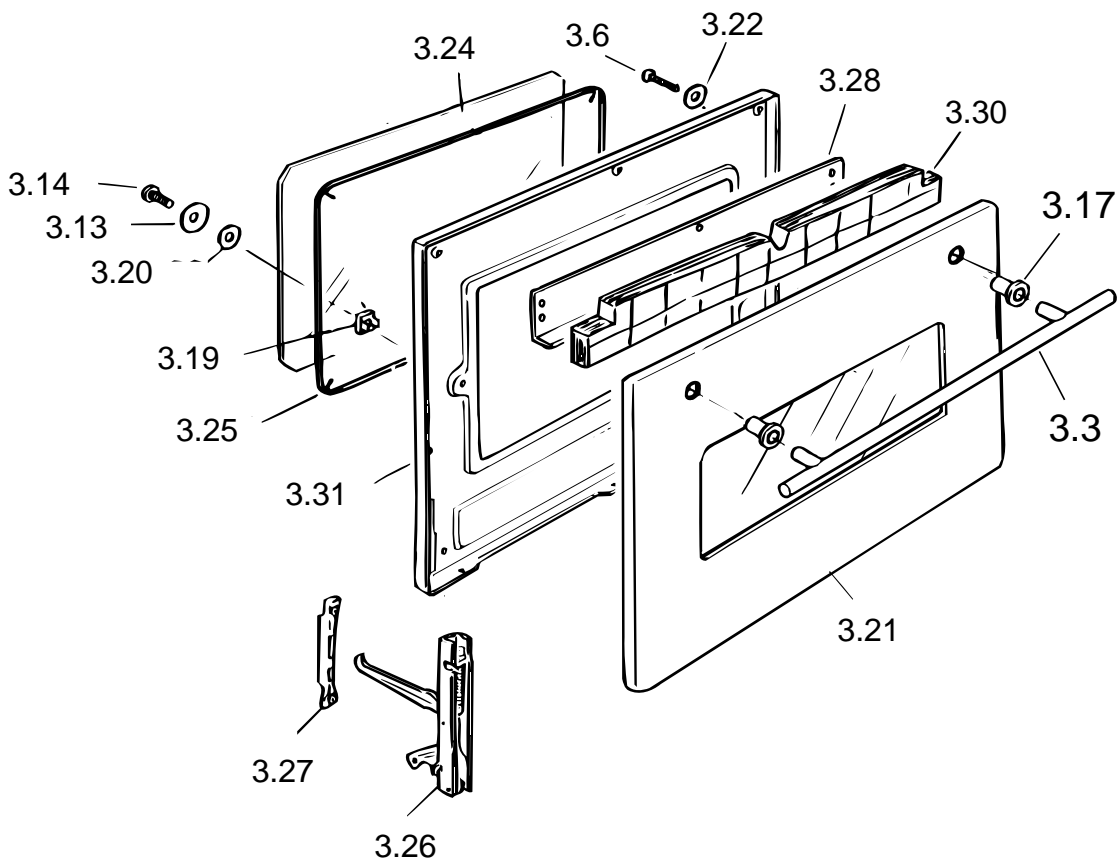
## CONTROL PANEL AND BODY

Ref. Table: 3/1.F

<u>REF.</u>	<u>CODE</u>	<u>DESCRIPTION</u>
1.10	35F727SYCP	Control panel

Ref. Table: 3/2.AA

<u>REF.</u>	<u>CODE</u>	<u>DESCRIPTION</u>
2.1	083225067	Trim surround
2.2	411UM02	Right side panel
2.3	411UM03	Left side panel
2.4	411F711	Control panel shelter
2.5	411UM06	Upper shelter
2.6	030092.1	Bottom oven insulation
2.7	030065	Bottom oven rear insulation
2.8	411UM01	Rear panel
2.9	4216003Z	Insulation cross-piece
2.10	411F706	Bottom panel
2.11	053039	Bottom oven seal
2.12	030066	Top oven insulation
2.13	421UM01Z	Lower switch shelter
2.14	085019	Spacer
2.15	450UM1EM11	Bottom oven cube
2.21	030045	Top oven rear insulation
2.22	053052	Top oven seal
2.23	450UM1ES11	Top oven cube
2.24	51BUM01	Shield
2.25	421FG01Z	Top oven element shelter
2.26	411UM04	Shelter

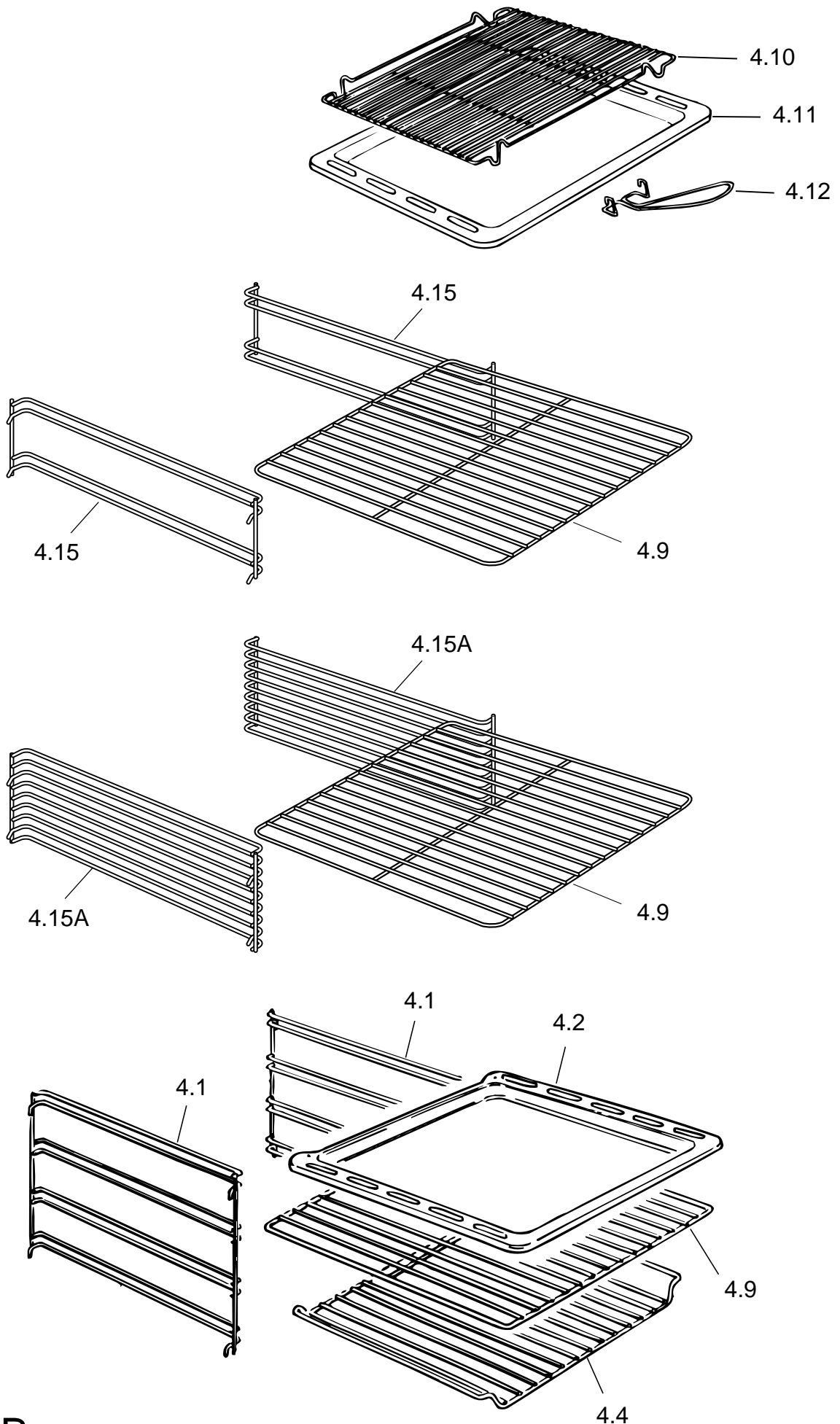


3/3.SB

## OVEN DOOR

Ref. Table: 3/3.SB

<u>REF.</u>	<u>CODE</u>	<u>DESCRIPTION</u>
3.1	032F71016V	Outer glass
3.3	037173060	Handle
3.6	001105	Screw
3.7	373FF706K	Bottom oven door skin
3.9	030057	Bottom oven door insulation
3.10	063053	Bottom oven hinge (male)
3.11	063025	Bottom oven hinge (female)
3.12	0311000.1T	Bottom oven inner glass
3.13	103205	Inner glass washer
3.14	001024	Screw
3.15	053084	Bottom oven glass seal
3.17	085039061	Sleeve
3.18	411F729	Bottom oven insulation support
3.19	214021	Nut with clips
3.20	003035	Silicone washer
3.21	032UM1614V	Top oven outer glass
3.22	003041	Washer
3.24	0311086.1T	Top oven inner glass
3.25	053086	Top oven glass seal
3.26	063065	Top oven hinge (male)
3.27	063066	Top oven hinge (female)
3.28	411UM05	Top oven insulation support
3.30	030064	Top oven door insulation
3.31	373FUM03K	Top oven door skin

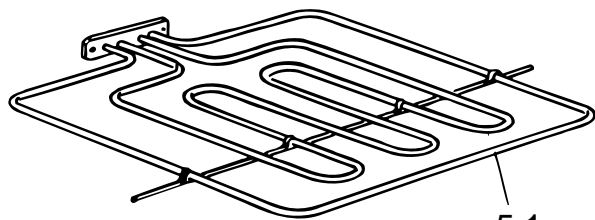


3/4.B

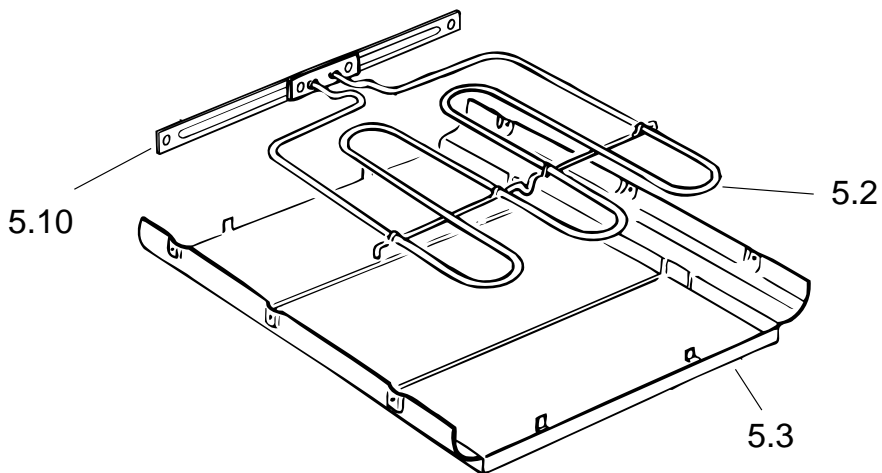
## OVEN EQUIPMENT

Ref. Table: 3/4.B

<u>REF.</u>	<u>CODE</u>	<u>DESCRIPTION</u>
4.1	217291	Shelf support
4.2	48B6101K	Oven tray
4.4	217271	Wire shelf
4.9	217270.1	Wire shelf
4.10	217385	Grill-pan grid
4.11	48B5102K	Grill-pan
4.12	037144	Grill-pan grid handle
4.15	217367	Shelf support
4.15A	217503	Shelf support



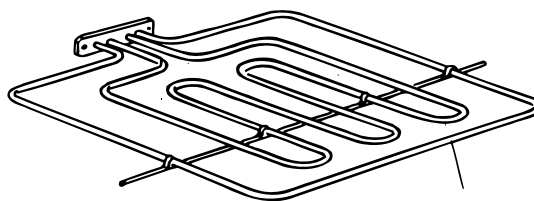
5.1



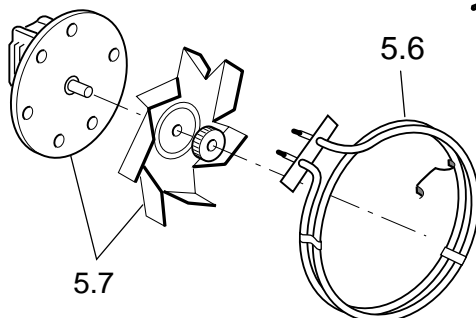
5.10

5.2

5.3

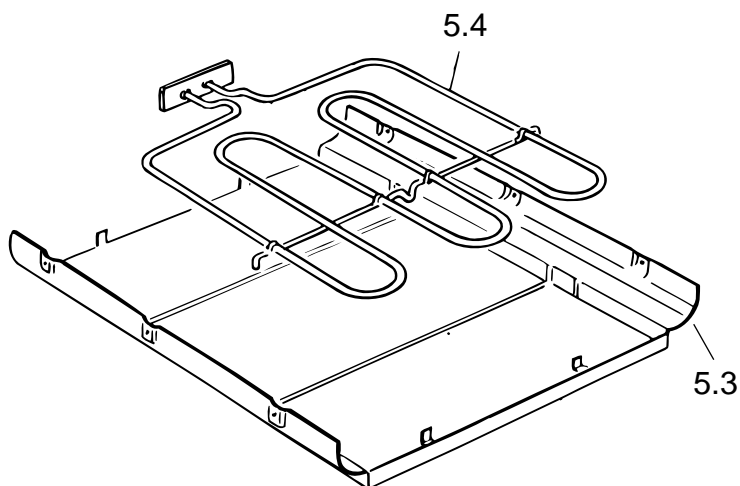


5.11



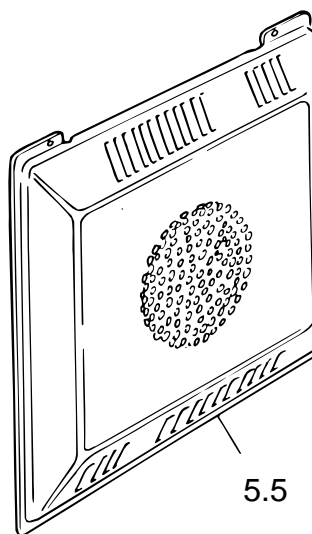
5.6

5.7



5.4

5.3



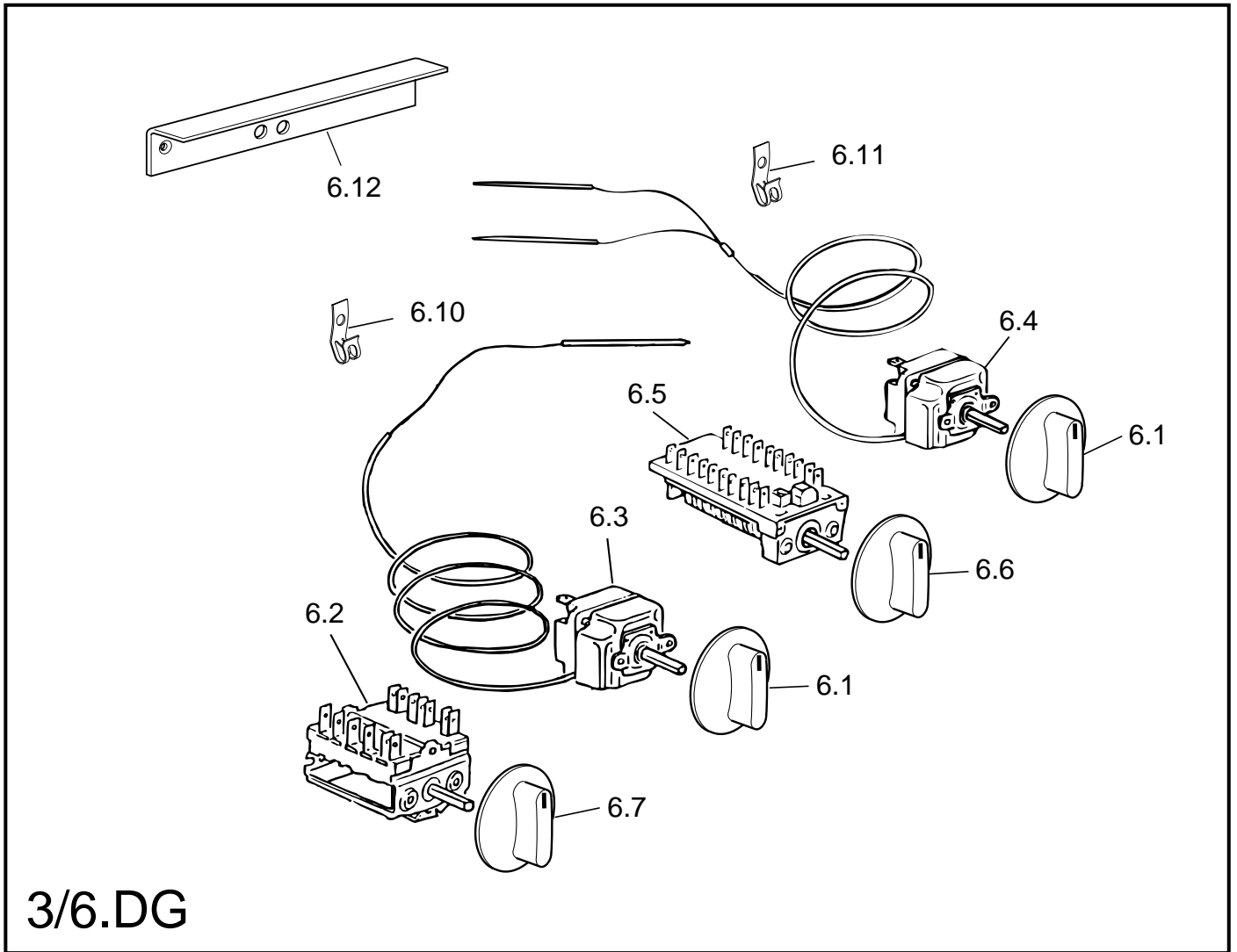
5.5

3/5.A

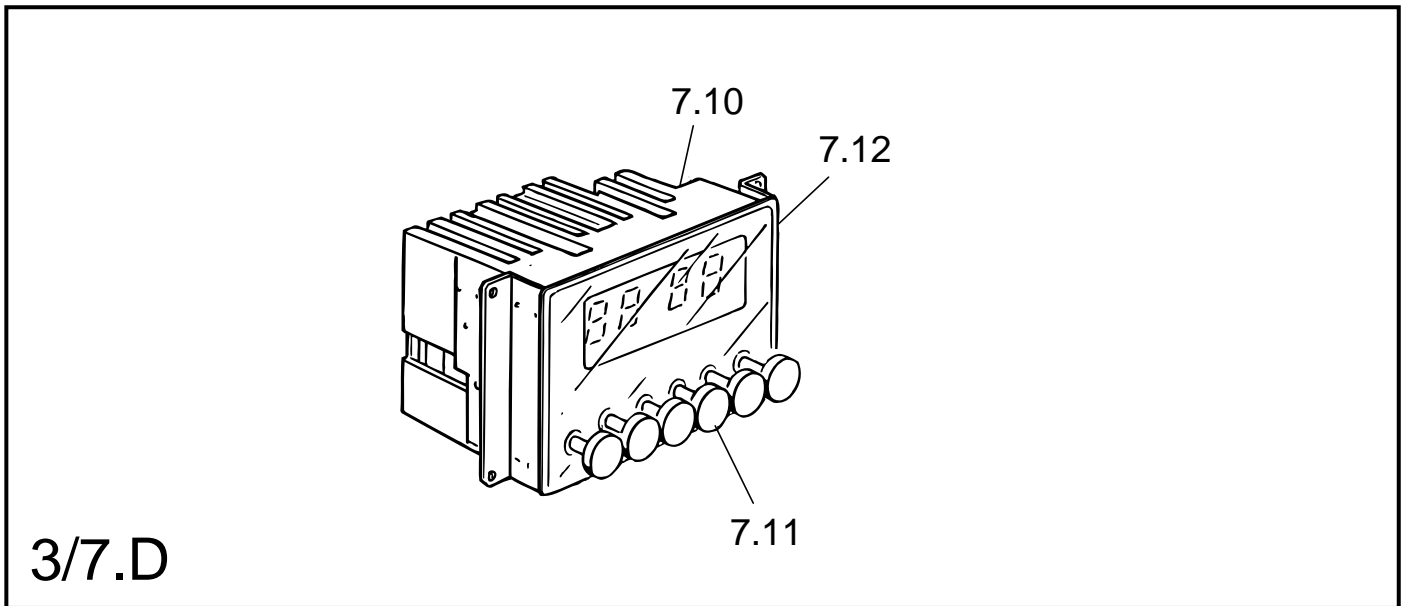
## CONVECTION AND FAN OVENS

Ref. Table: 3/5.A

<u>REF.</u>	<u>CODE</u>	<u>DESCRIPTION</u>
5.1	062072004	Top grill element - 230 V
5.2	062058004A	Top oven bottom element - 230 V
5.3	421F701Z	Element shelter
5.4	062058004	Bottom element - 230 V
5.5	47AN601K	Fan diffuser
5.6	062057004	Fan element - 230 V
5.7	079008001F	Fan motor - 220/240 V
5.9	103085	Filter
5.10	094207	Bottom element fixing bar
5.11	062079004	Grill element - 230 V



3/6.DG



3/7.D

## SWITCHES & THERMOSTATS

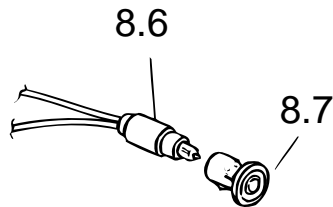
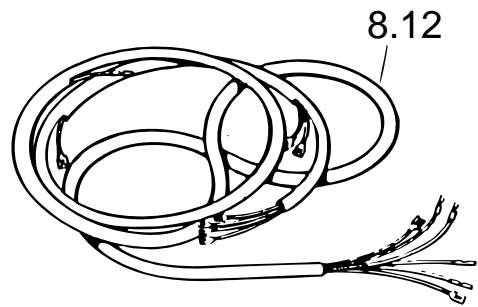
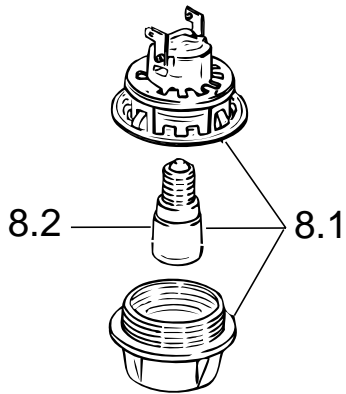
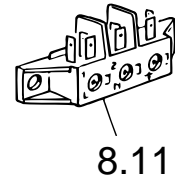
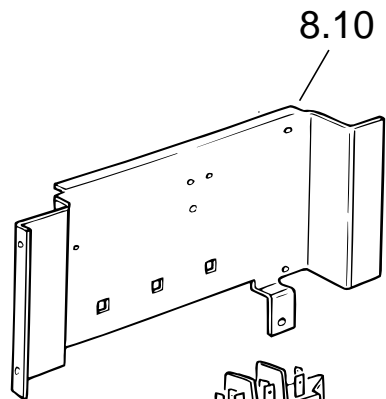
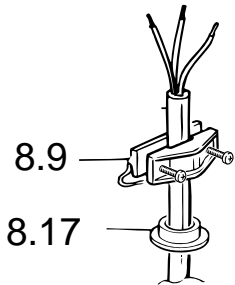
Ref. Table: 3/6.DG

<u>REF.</u>	<u>CODE</u>	<u>DESCRIPTION</u>
6.1	218P002103	Control knob
6.2	050040.1	Switch
6.3	066072	Thermostat
6.4	066078	Thermostat
6.5	050028.1	Switch
6.10	213023	Clip
6.11	213025	Clip
6.12	094289	Bulb thermostat protection

## PROGRAMMER

Ref. Table: 3/7.D

<u>REF.</u>	<u>CODE</u>	<u>DESCRIPTION</u>
7.10	074041	Electronic programmer
7.11	103271080	Button (Black)
7.12	094120	Electronic programmer chassis

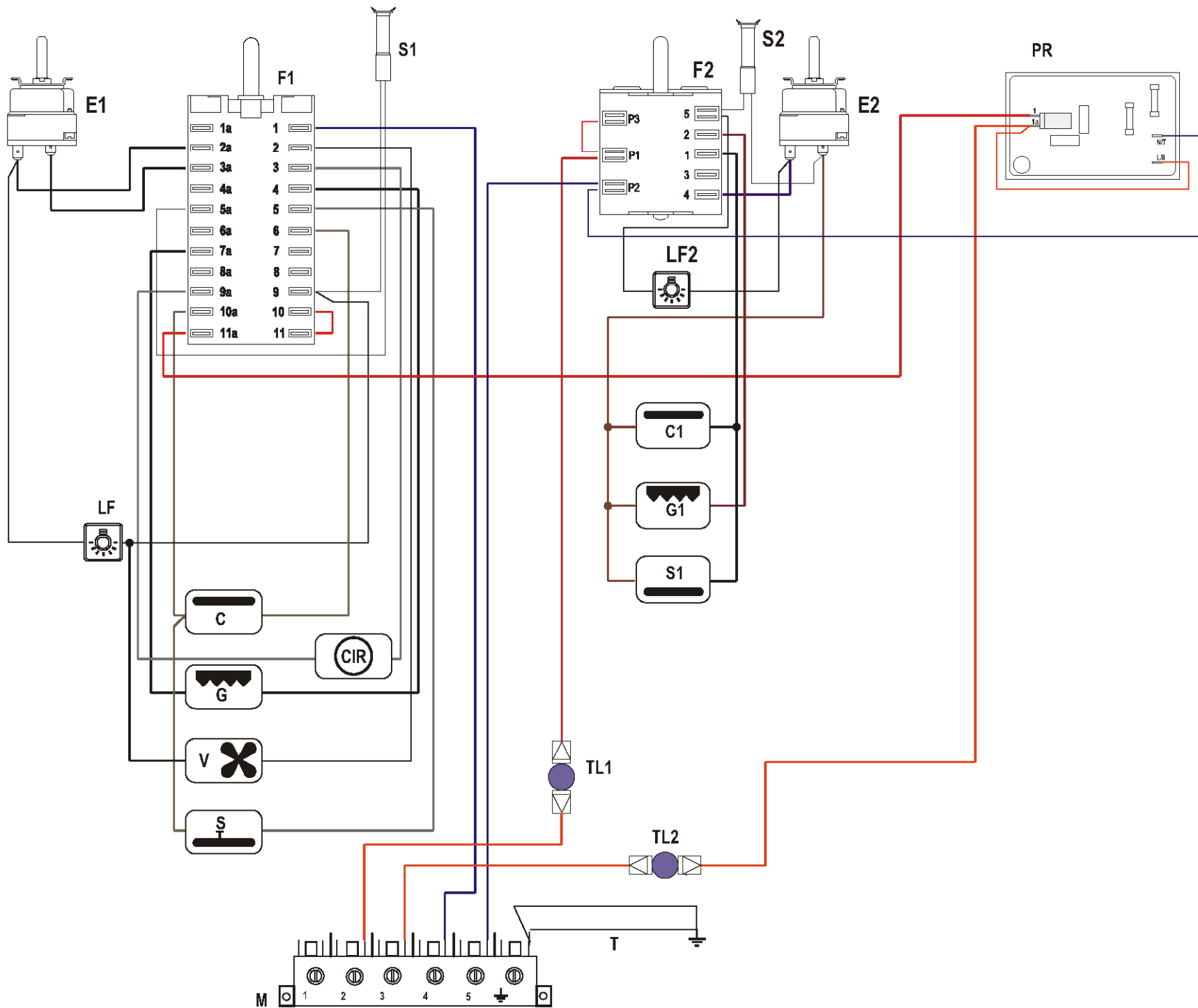


3/8.BA

## ELECTRICAL EQUIPMENT

Ref. Table: 3/8.BA

<u>REF.</u>	<u>CODE</u>	<u>DESCRIPTION</u>
8.1	072004	Lamp holder
8.2	073013001	Lamp
8.6	073038.2	Control Lamp
8.7	073034	Control lamp cover
8.9	052008	Wire fastener
8.10	094162	Terminal bracket
8.11	051038	Terminal block
8.12	113977	Wiring
8.16	066057	Cut-off thermostat 140°
=	066073	Cut-off thermostat 150°
8.17	052007	Anti-shock
–	1101279	Instruction booklet



**ELECTRIC DIAGRAM KEY**

- TOP OVEN**  
 F2 Oven switch  
 E2 Oven thermostat  
 S2 Thermostat pilot lamp  
 LF2 Oven lamp  
 C1 Top element  
 G1 Grill element  
 S1 Bottom element  
 TL1 Thermal overload

- BOTTOM OVEN**  
 F1 Oven switch  
 E1 Oven thermostat  
 S1 Thermostat pilot lamp  
 PR Oven programmer 1P  
 LF Oven lamp  
 C Top element  
 G Grill element  
 V Fan  
 S Bottom element  
 CIR Circular element  
 TL2 Thermal overload

- M Terminal block  
 T Earth connection

**caple**  
**C305M/SS**  
 Caple Double D.L Fan Oven