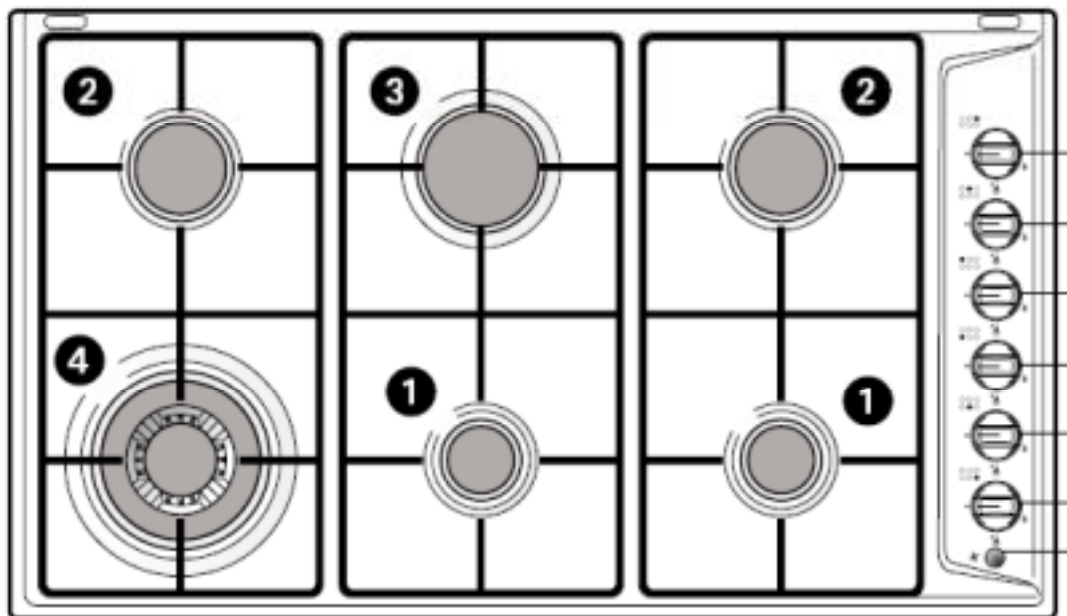




# C762G/SS

Cagle 6 Burner Gas Hob

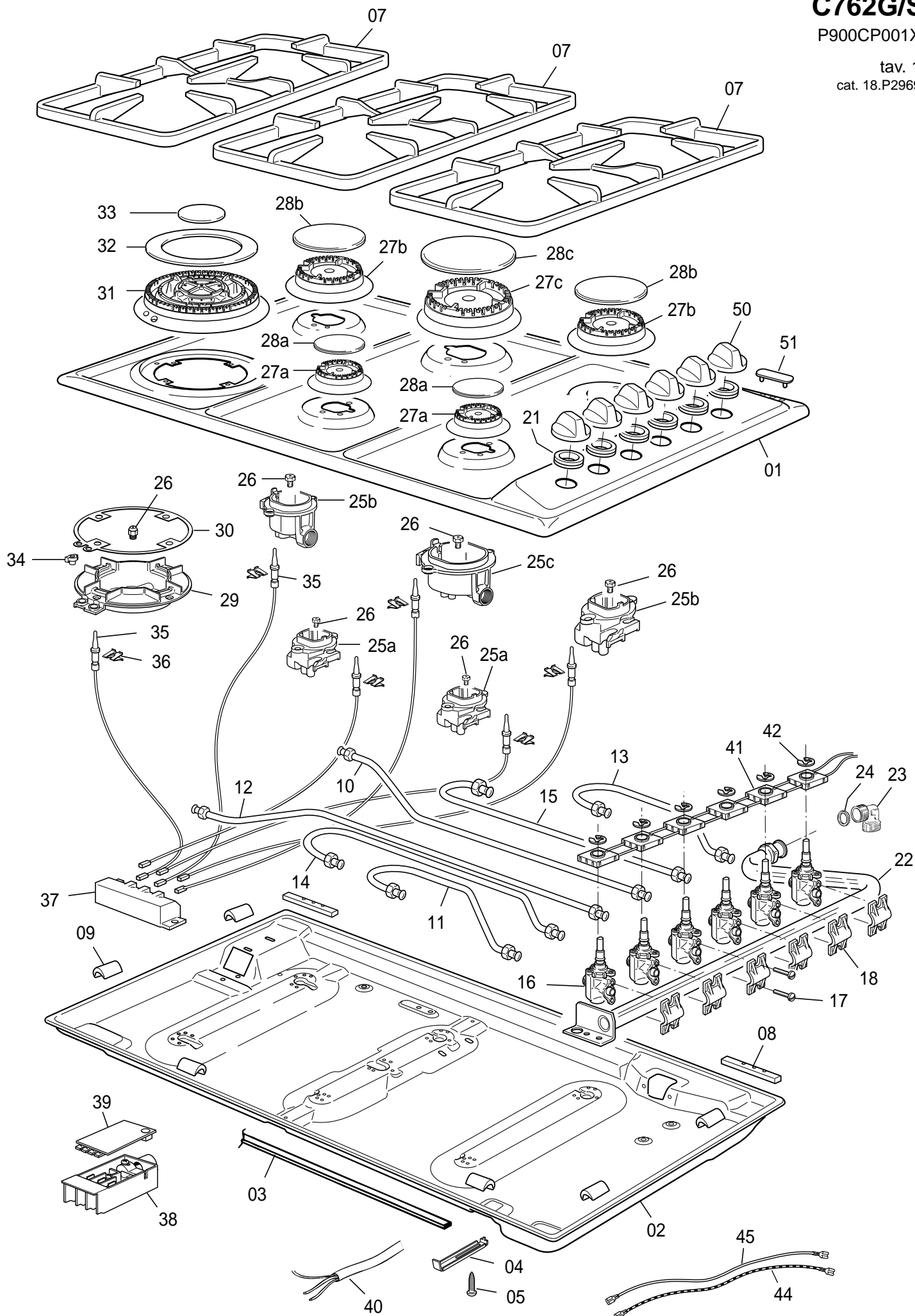


TECHNICAL INFORMATION

# C762G/SS

P900CP001X

tav. 1  
cat. 18.P2969



REF.	CODE	DESCRIPTION
01	3390601SCP	Hob top
02	4119001	Burner casing
03	053038	Seal
04	094154	Fixing bracket
05	001130	Screw
07	217501	Top grate
08	040068	Rear fixing bar
09	040049	Spacer
10	029684	Left SR burner pipe
11	029681	A burner pipe
12	029686	TR burner pipe
13	029683	Right SR burner pipe
14	029682	Central front A burner pipe
15	029685	Central rear R burner pipe
16	106207/G25	Tap - Ø 0.27
=	106208/G25	Tap - Ø 0.34
=	106209/G25	Tap - Ø 0.44
=	106221/G25	Tap - Ø 0.65
17	001202	Screw
18	094315	Tap bracket
21	040057	Rubber pad
22	3429060G01	4 gas inlet pipe
23	067016	Elbow
24	053024.1	Elbow gasket
25a	215465	Burner-cup A
25b	215466	Burner-cup SR
25c	215467	Burner-cup R
26	101234	Injector - Ø 0.72 - G20
=	101235	Injector - Ø 0.97 - G20
=	101236	Injector - Ø 1.15 - G20
=	101237	Injector - Ø 1.35 - G20
26	101180	Injector - Ø 0.50 - G30
=	101181	Injector - Ø 0.65 - G30
=	101182	Injector - Ø 0.85 - G30
=	101233	Injector - Ø 0.95 - G30
27a	068109001	Burner-head A
27b	068110001	Burner-head SR
27c	068111001	Burner-head R
28a	216129005A	Burner-cap A
28b	216130005A	Burner-cap SR
28c	216131005A	Burner-cap R
29	215469	Burner-cup TR
30	053078	Burner-cup gasket
31	068115001	Burner-head TR
32	216133005A	Burner-cap outside TR
33	216132005A	Burner-cap inside TR
34	040064	Stopper
35	084028	Spark plug - 250 mm
=	084029	Spark plug - 630 mm
=	084033	TR spark plug - 500 mm
36	035094	Igniter spring
37	082048.1	Electronic ignition
38	051054	Terminal block
39	103451	Terminal block cover
40	054078	Cord 3x0,75
41	103740	Ignition switches
42	003039	Retaining ring
44	103742	Yellow-Green cable L950
45	103741	Red cable L950
50	218G00X333	Knob
51	10348100X	Plug
-	1102138	Instruction booklet
	6109060001	LPG gas conversion kit