



WMI4001

Caple Integrated Washing Machine

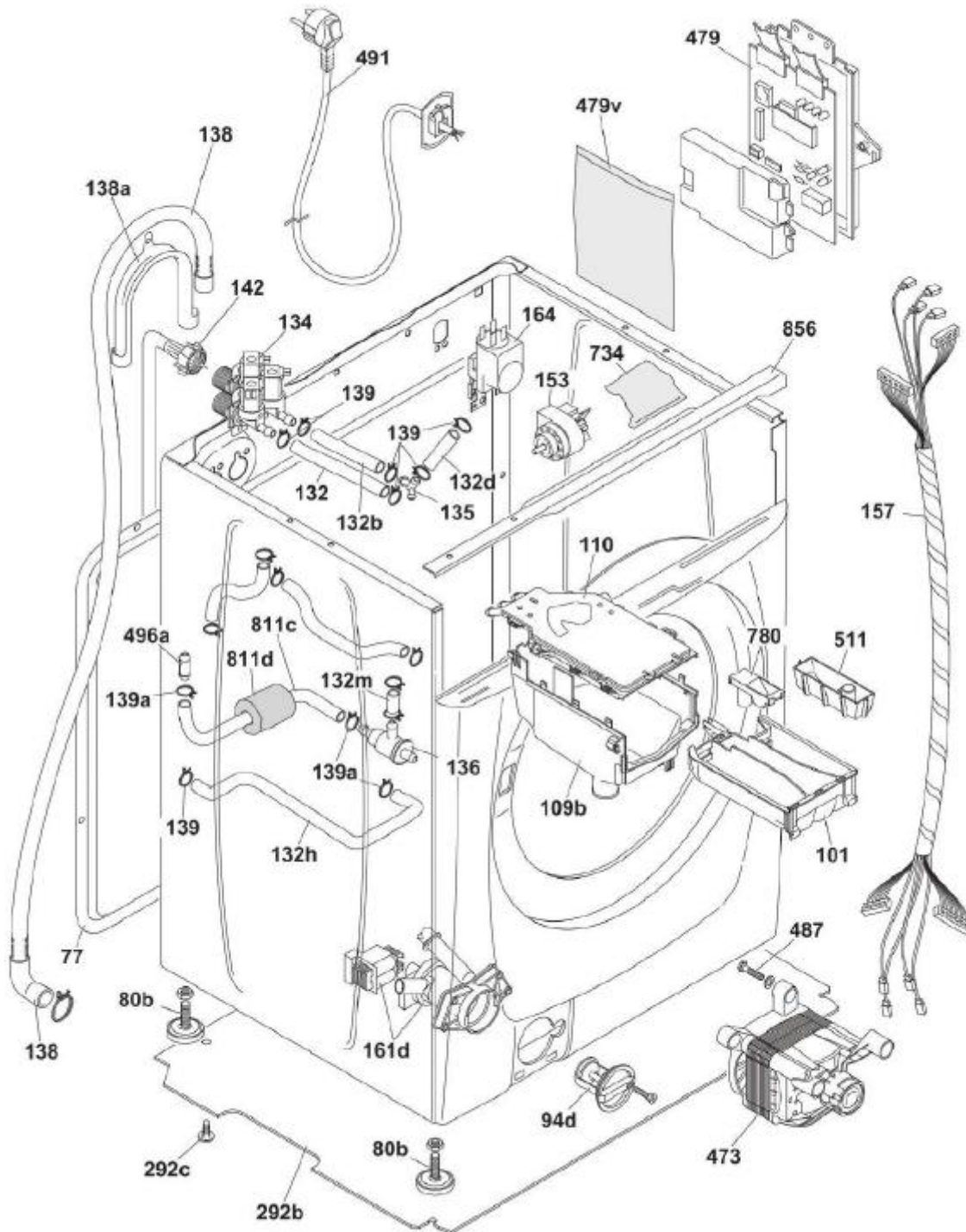


Technical Manual



WMI4001

Cable Integrated Washing Machine





WMI4001

Caple Integrated Washing Machine

Item	Part Number	Description
10	43015708	Timer/select. knob
14h	41013044	Therm/potent. knob spring
31b	43037752	Control panel with Sensor
32	43030097	Dispenser drawer front
49g	40014409	Trade mark plate
60	43010993	Hinge
62	43012588	Porthole outer frame
63	41040031	Porthole glass
65a	49040858	Door catch with spring service pack
67	43031993	Porthole door complete
67d	43012569	Porthole door inner frame
77	41053152	Rear panel
80b	43025155	Foot
94d	41021233	Filter w/knob without screw
97d	49007894	Filt hous w/filter cartridge
101	43001056	Detergent dispenser
109b	41040993	Dispenser bottom section
110	43012978	Dispenser top section
114a	92470061	Hose clip
132d	41040999	Hose from Y to container
132h	41040998	Middle hose
132j	43006749	Fill hose 80 mm.
132m	41041004	Dispenser-ejector hose
132u	43010141	Fill hose 170 mm.
134	41040283	Solenoid valve
135	41041003	Y Junction
136	41041000	Ejector assembly
138	92693373	Drain hose
139	92470012	Hose clamp D.15
139a	92470038	Hose clamp D.18
139b	90386137	Hose clamp D.24
142	92250869	Fill hose
151f	41036616	Selector 16 settings
153d	41042893	Analog pressure sensor (APS)
157	41050104	Wiring harness
157r	41036614	Harness (Selector / Potentiometer)
158	91623678	Mains block
161d	43014233	Drain/recycle pump complete
162	41046787	Door safety device



WMI4001

Caple Integrated Washing Machine

Item	Part Number	Description
164	43028125	Anti jamming filter radio
203a	41054162	Tub complete
230	41042927	Tub gasket clip
230a	41050137	Tub gasket clip
233a	41021881	Pulley fixing screw
242	43005963	Support spring.
245	92438720	Self-locking washer
246	41021829	Bolt
246d	41011359	Lower balance weight bracket
247	43010676	Upper balance weight
248	41050207	Lower balance weight
251a	41017170	Telescopic shock absorber
251e	41017173	Shock absorber pin
251f	41017169	Anti-noise bush
259	92673961	Support
271	70006611	Door gasket
272	41021741	Discharge pipe
273	41034869	Fill pipe
275	41021976	Pressure Switch Hose
278	41021255	Hose clip
280	92470202	Hose clip
286a	41039772	Heater + NTC
287m	49015420	NTC probe
290	41046858	Drum pulley
292	41039460	Drive belt
292b	41050345	Bottom panel
292c	92473636	Clips
328a	43014067	Electronic module container
328l	41044897	Control panel electron module FUSION
473	41048923	Commutator motor
479k	43033282	Control board 3PH GEN2/3 Not Programmed
479v	41039286	Power Card Protection
479v	41003174	Power Card Protection
479y	49125610	Electronic Control NFC BLE Programmed
487	46006726	Special bolt
491c	41034522	Mains cable x UK
496a	41041547	Sprayer hose insert
517	43037869	Upper cabinet closure
548	43032012	Spacer block



WMI4001

Caple Integrated Washing Machine

Item	Part Number	Description
551	43012724	Magnetic closure
552	43011965	Hinge
552a	43031999	Built-in's hinges service pack
553	43012722	Hinge plaque
602	41017172	Shock-absorb connection bracket
643	41021016	Door handle assembly
643a	43031994	Handle plate - profile
643b	41018445	Handle spring
734	41024476	Timer protection
755	41009175	inductor
780	41018421	Siphon for water softener
811c	41040995	Sprayer feeding hose
811d	41041602	Rubber sponge
832	91408004	Discharge pipe cir-clip
840	41021913	Drum shovel
998a	41053646	Eeprom File NFC
999	43032080	Electrical diagram
1009	41036197	Disc spring



WMI4001

Caple Integrated Washing Machine

