



SP612SS

Caple Spirit 60cm Hood Stainless Steel

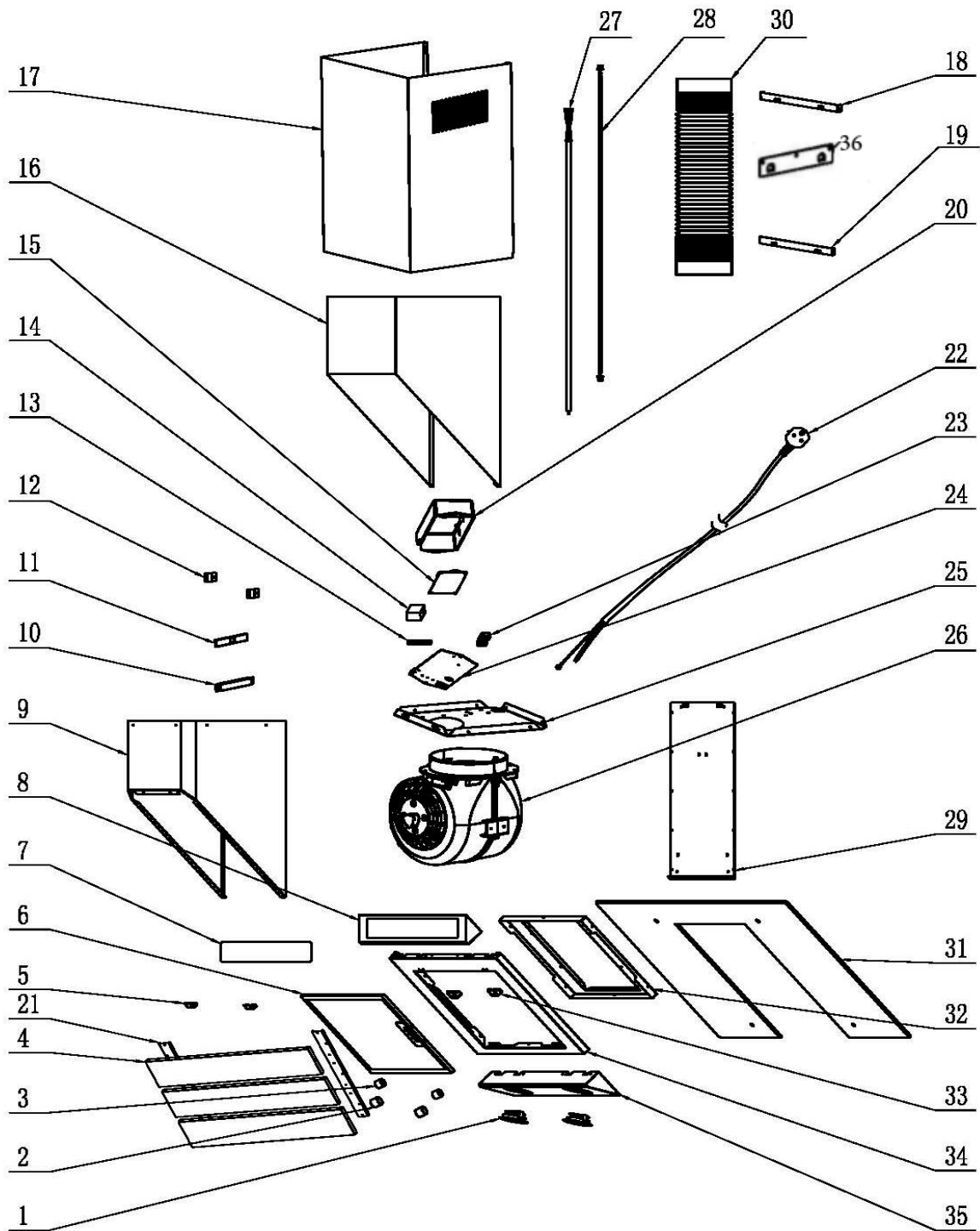


Technical Manual



SP612SS

Caple Spirit 60cm Hood Stainless Steel





SP612SS

Caple Spirit 60cm Hood Stainless Steel

| Item | Part Number    | Description                 | Quantity |
|------|----------------|-----------------------------|----------|
| 1    | B62-2401-175-0 | LED Lamp                    | 2        |
| 2    | B29-2703-016-0 | Magnet                      | 6        |
| 3    | B32-2703-017-0 | Magnet silica gel sleeve    | 2        |
| 4    | B20-2715-046-P | Decoration board            | 3        |
| 5    | B20-2715-044-P | Switch bracket              | 2        |
| 6    | B35-2602-042-0 | Aluminium filter            | 1        |
| 7    | B33-2715-033-0 | Control board Glass         | 1        |
| 8    | B20-2715-031-P | Switch board                | 1        |
| 9    | B23-2703-065-P | Casing board                | 1        |
| 10   | B30-2501-078-0 | Switch box bottom           | 1        |
| 11   | B63-2501-052-0 | Switch board                | 1        |
| 12   | B23-2501-183-P | Touch control support       | 2        |
| 13   | B30-2501-035-0 | PCB Box wiring holder       | 1        |
| 14   | B64-2401-342-0 | Capacitor                   | 1        |
| 15   | B63-2401-254-0 | PCB                         | 1        |
| 16   | B20-2715-020-P | Lower Chimney (500mm)       | 1        |
| 17   | B20-2102-036-P | Upper chimney (500mm)       | 1        |
| 18   | B23-2501-029-P | Upper Chimney bracket       | 1        |
| 19   | B23-2501-031-P | Lower chimney bracket       | 1        |
| 20   | B30-2501-034-0 | PCB Box Lid                 | 1        |
| 21   | B20-2715-047-P | Decoration board Connector  | 2        |
| 22   | B62-2602-043-0 | UK BS plug cable            | 1        |
| 23   | B30-2201-068-0 | Motor housing holder        | 2        |
| 24   | B30-2501-025-0 | PCB Box bottom              | 1        |
| 25   | B23-2501-006-P | Casing cover board          | 1        |
| 26   | B76-4806-008-B | Motor housing assemble      | 1        |
| 27   | B62-2501-129-0 | LED Lamp cable              | 1        |
| 28   | B62-2501-015-0 | Switch Cable                | 1        |
| 29   | B23-2703-064-P | Casing Back support         | 1        |
| 30   | B36-2201-040-0 | Plastic pipe $\phi$ 153     | 1        |
| 31   | B33-2703-046-0 | Glass                       | 1        |
| 32   | B23-2715-021-P | Filter board bracket        | 1        |
| 33   | B20-2715-023-P | Switch bracket              | 2        |
| 34   | B20-2715-017-P | Filter board                | 1        |
| 35   | B10-2715-026-Q | Lamp board welding assemble | 1        |
| 36   | B23-2201-012-P | Fixing Bracket              | 1        |

