



CCH701

Caple 700mm Stainless Steel Chimney

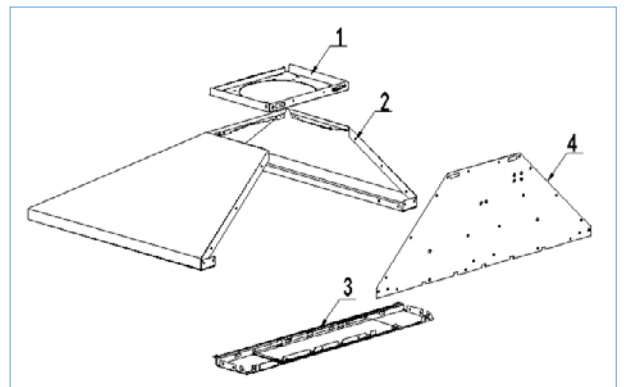
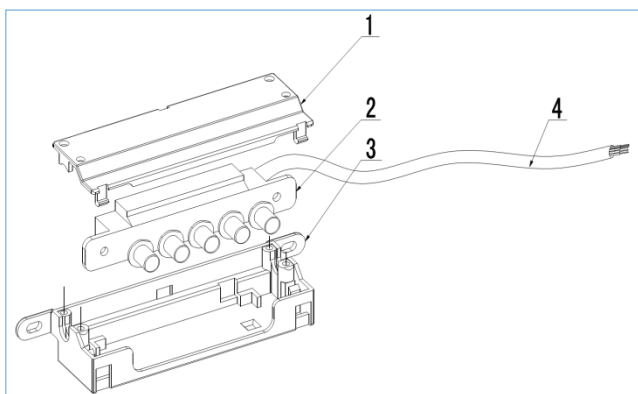
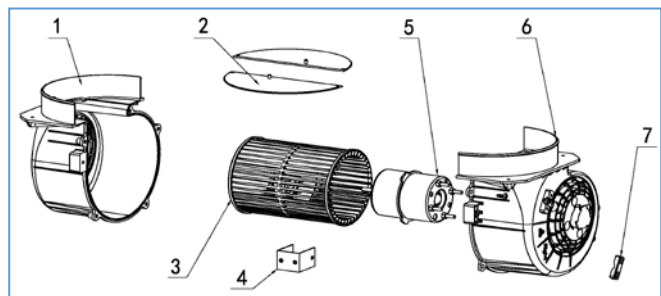
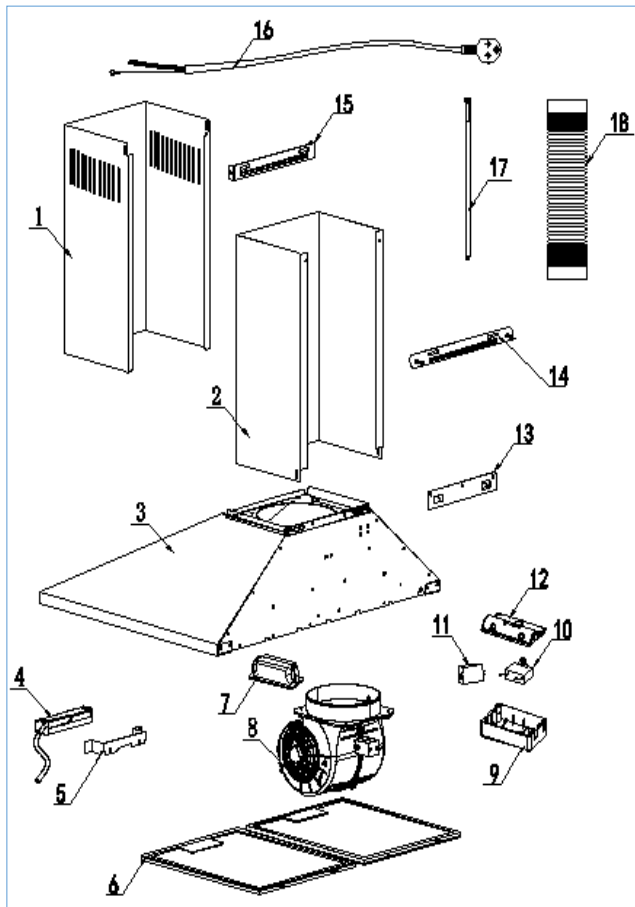


Technical Manual



CCH701

Caple 700mm Stainless Steel Chimney





CCH701

Caple 700mm Stainless Steel Chimney

Item	Part Number	Description	Quantity
1	B20-2201-004-P	Upper Chimney (400MM height)	1
2	B20-2201-006-P	Lower Chimney (400MM height)	1
3	B71-2201-195-000-01-B	Casing Assembly	1
4	B76-4102-008-B	Switch Assembly	1
5	B23-2201-094-P	Switch holder	1
6	B35-2103-056-0	Grease filter	2
7	B62-2401-592-0	LED lamp	1
8	B76-4201-003-B	Motor Assembly	1
9	B30-2301-139-0	Lamp connector cover	1
10	B64-2401-204-0	Motor capacitor(1.5 μ F)	1
11	B63-2501-044-0	Single motor Wiring Board(PCB)	1
12	B30-2301-140-0	Connector upper cover	1
13	B23-2201-012-P	Hanging Board	1
14	B23-2201-010-P	Lower Chimney Support Bracket	1
15	B23-2201-008-P	Upper Chimney Support Bracket	1
16	B62-2602-043-0	UK BS plug cable	1
17	B62-2401-365-0	LED Lamp cable	1
18	B36-2201-040-0	ϕ 153 Plastic Pipe	1
For Motor accessory (B76-4201-009-B)			
1	B30-2201-065-0	Motor housing(left)	1
2	B30-2201-022-0	One-way Valve Flap(Air Outlet)	2
3	B30-2201-067-0	Blower	1
4	B23-2201-069-P	Motor housing holder	1
5	B61-1201-001-0	Motor (#350)	1
6	B30-2201-066-0	Motor housing(right)	1
7	B30-2201-068-0	Motor Holder	2
For Mechanical switch (B76-4102-008-B)			
1	B30-2201-090-0	Switch box cover lid	1
2	B60-2401-195-0	Push button	1
3	B30-2201-089-0	Push button bottom	1
4	B62-2301-048-0	Switch Cable	1
For Chassis assembly (B71-2201-195-000-01-B)			
1	B23-2201-016-P	Round Casing Lid	1
2	B20-2201-116-P	Casing assembly	1
3	B20-2201-192-000-01-P	Lamp board	1
4	B23-2201-117-P	Back Board	1

