

■ CAPLE ■

INSTALLATION AND OPERATING INSTRUCTION BOOKLET

F Series Chimney Extractors



IMPORTANT: You must read this instruction Book before installing or using this appliance and retain it for future use.

Caple Products
Telephone 0870 2411142
Facsimile 0117 982 6878

Thank you for buying your new CAPLE Chimney Extractor. To ensure that you get the best results from your new Chimney Extractor, we strongly suggest that you read this instruction manual thoroughly before use. This manual contains installation advice, usage instructions and a cleaning guide, as well as other important facts about your CAPLE Chimney Extractor. If treated with care, your CAPLE Chimney Extractor should give you years of trouble-free use.

IMPORTANT WARNINGS AND ADVICE

After unpacking, make sure that the appliance is in perfect order. If you have any doubt, do not use it and contact the retailer or call a qualified engineer.

Pieces of packing (plastic bags, polystyrene, nails, metal, etc.) must not be left within the reach of children because they are potential sources of danger.

- Do not try to modify the appliance's technical characteristics because this could be dangerous
- Do not clean or maintain the appliance without previously disconnecting it
- Do not let children or people who are not capable use the appliance without supervision.

The manufacturer declines any responsibility for damage caused by incorrect, mistaken or irrational use.

THIS APPLIANCE COMPLIES WITH THE FOLLOWING DIRECTIVES:

EEC 73/23 and 93/88

(Low Voltage)

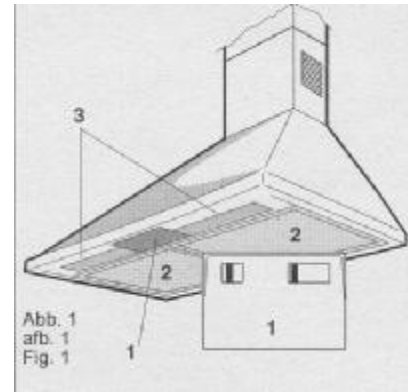
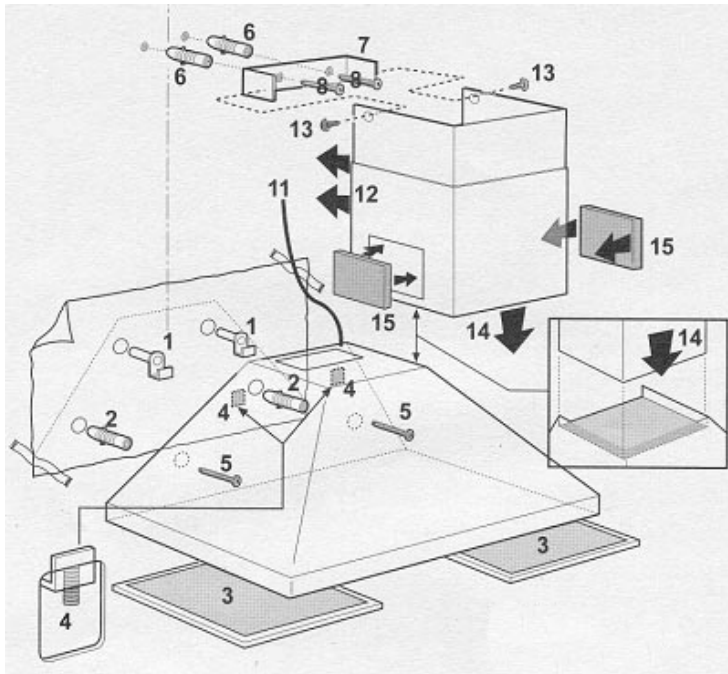
EEC 89/336

(Electromagnetic Compatibility)

EEC 89/109

(Contact with foods)

**For Spare Parts, Technical Advice
or Product Service call the
CAPLE HELPLINE on 0870 2411142
(Answer phone outside office hours)**



Hood Description - Fig. 1

1. Control panel
2. Metal grease filter
3. Worktop illumination

Use: Two systems are available

Exhaust mode (Fig: S)

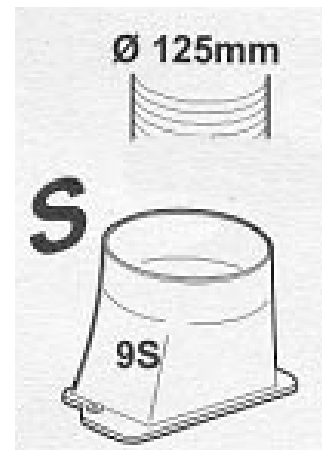
Vapors are extracted outside through an exhausting pipe that is affixed to the connection ring above the hood.

Diameter of the exhausting pipe must be equal to that of the connection ring.

In the horizontal runs the duct must be slightly slanted (about 10°) and directed upwards to vent the air easily from the room to the outside.

Attention!

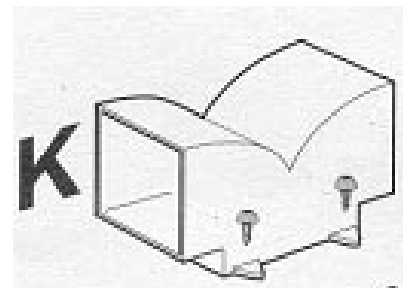
If the hood is supplied with carbon filter then it must be removed.



Filter mode (Fig: K)

This version is used when there is no exhaust duct for venting outdoors or when it is impossible to install one.

The air is filtered through a carbon filter (for its installation see paragraph "Carbon filter") and re-circulated into the room through the grating on the lower side of the chimney.



Attention!

If the hood is not supplied with carbon filter, then it must be ordered and mounted.

INSTALLATION

When installed, the distance between hood and gas burners or electric plates must be not less than 65 cm providing the total hob output does not exceed 11kw.

For each kw in excess of 11kw the distance between extractor and gas hob must be increased by 10cm.

ELECTRIC CONNECTION

Before completing any connection make sure the house voltage corresponds with the voltage indicated on the label affixed inside the hood.

It is advisable to call a qualified technician to make the electrical connection.

Fit an approved plug or an approved bipolar switch with a minimum contact opening of not less than 3mm.

The manufacturer is not liable for any problems caused by the user's failure to observe the above instructions.

INSTRUCTIONS FOR USE

The hood is provided with a motor with several speeds. For the best performance, we recommend using the low speeds in normal conditions and the high speeds in particular cases of strong odor and vapor concentration.

We recommend starting up the hood a few minutes before cooking and keeping it running until all the odors have been eliminated.

WARNING!

- The hood cannot be connected to flues of other appliances that run on energy sources other than electricity.
- When the hood is used at the same time as other appliances that run on energy sources other than electricity, provision must be made for an adequate air supply.
- No food must be cooked flambé underneath the hood. The use of an unprotected flame is dangerous for the filters and could cause fires.
- Therefore, never use an open flame under the hood. When frying foods, never leave the pan alone because the cooking oil could flare up.
- Please, keep to the provisions of official directives regarding the question of fume discharge.
- The manufacturer refuses to accept any responsibility for damage to the hood or its catching on fire because of failure to observe the above instructions.

MAINTENANCE

Before performing any maintenance operation, isolate the hood from the electrical supply by switching off at the connector and removing the connector fuse.

Or if the appliance has been connected through a plug and socket, then the plug must be removed from the socket.

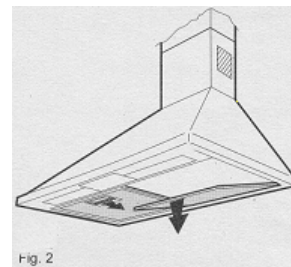
Metal grease filter (2 or 3 pieces)

The metal grease filter lasts forever and must be washed either by hand or in the dishwasher (65°C) with suitable detergents. **The grease filters must be washed at least once a month.**

Remove the filter using the handles designed for this purpose by pulling the filter backwards and then downwards (Fig. 2).

Let the filter dry without damaging it before putting it back into place.

Carry out the above steps in reverse order, to put the filters back after having washed them.



Carbon filter (2 pieces)

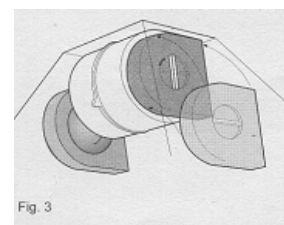
This filter dissolves cooking odors.

The carbon filter must never be washed.

It should be changed every 4 months with normal use.

Fitting and replacing the carbon filter:

1. Disconnect the hood from the electricity.
2. Remove the metal grease filters (Fig. 2)
3. If the filters have not been installed, place one filter on each side so that they cover the grates protecting the rotor on the motor. Then turn the centre handle for the filters in the clockwise direction (Fig. 3).
4. If the charcoal filters have already been installed (covering the grates protecting the rotor on the motor) and must be replaced, turn the central handle in the counter-clockwise direction until the filters are unlocked. e) Refit the metal grease filters.



Cleaning

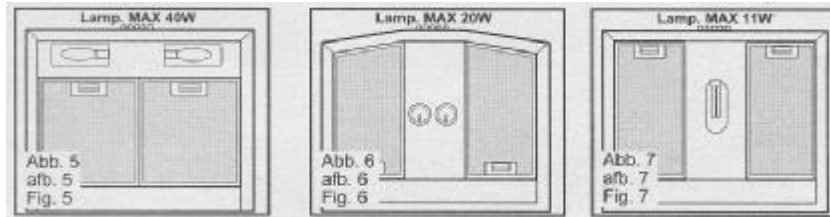
To clean the outside of the hood use a cloth moistened with denatured alcohol or neutral liquid detergents. Never use products containing abrasive. Wipe brushed stainless steel in the same direction as the brushing to avoid scratching.

Attention

Failure to observe the rules for cleaning the appliance and changing and cleaning the filters can cause fires. Therefore, we recommend observing these instructions.

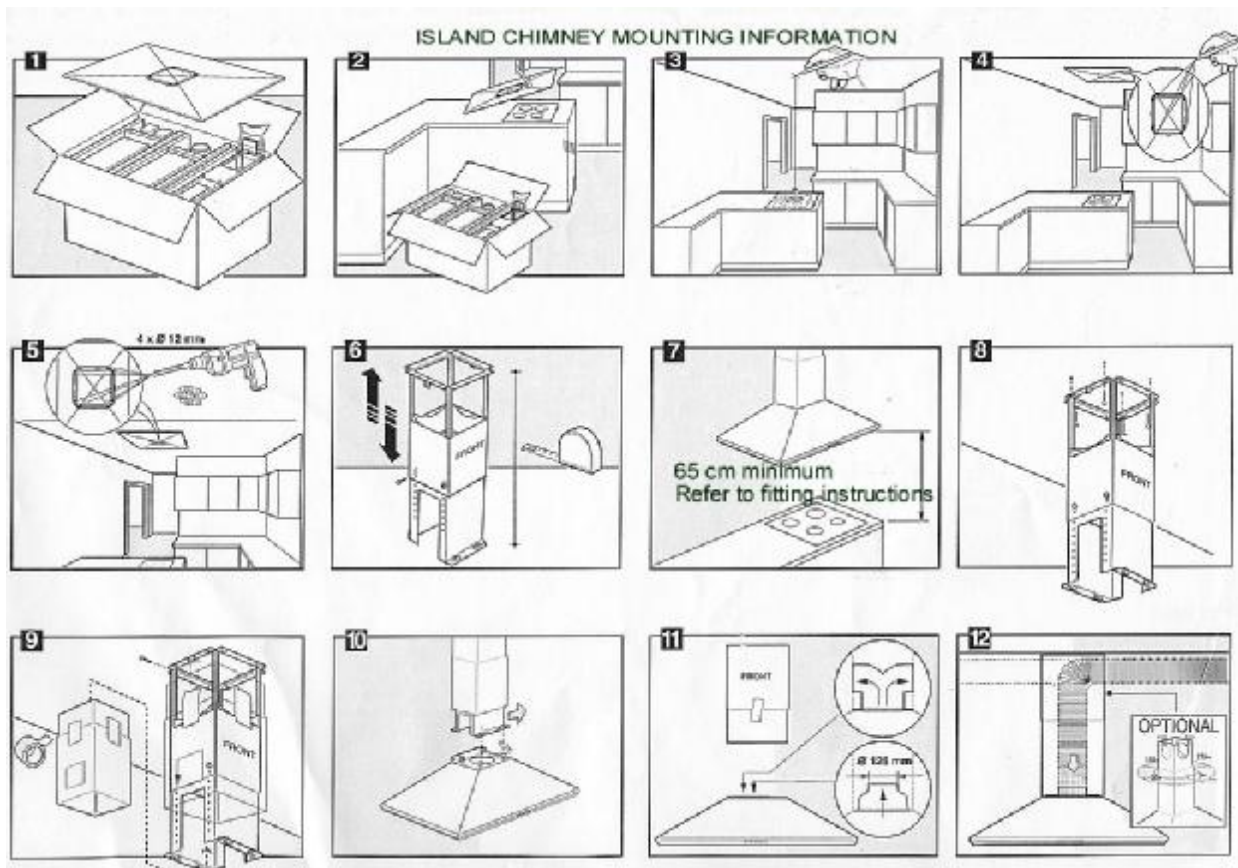
Replacing the lamp

1. Disconnect the hood from the electricity.
2. Remove the grease filters (Fig. 2).
3. Illumination: always replace burnt-out lamps with 40-Watt max. (E14) (Fig. 5) -20 Watt max. (Fig. 6) and 11-Watt max. (Fig. 7).
4. Refit the metal grease filters.
5. Before calling for repair service because the hood fails to light up, make sure the bulbs are screwed in tightly.



FITTING

INSTRUCTIONS FOR ISLAND EXTRACTORS



CAPLE "Built-in" Service

Should you require service at any time, please contact the **Caple Help line on 0870 2411142**.

Caple have a nationwide service network of engineers who will respond quickly to your call.

Always replace spare parts with genuine Caple spares. These are available from authorized **Caple Service Centres** or by mail order from our **National Service Stores**, simply telephone **0870 2411142**. When ordering parts always quote the model number and serial number of your appliance.

YOUR GUARANTEE

CAPLE guarantees all parts of this product for one year from the date of purchase. During that time, should it become necessary CAPLE engineers will replace or repair all defective parts free of charge, except for parts subject to fair wear and tear, such as light bulbs.

Parts and the engineers labour costs are chargeable after the first 12 months.

To qualify for benefits under the guarantee, you must be able to provide proof of date of purchase and the appliance must have been supplied, installed and used for domestic purposes only in accordance with CAPLE instructions.

Consequential losses and accidental damage to the product are not covered by the guarantee.

This guarantee does not affect your statutory or common law rights.

CAPLE cannot be responsible for the results of using this appliance for any other purposes other than those described in these instructions.